



Upgrade your kit to its full potential and achieve new visual heights with EVO II Pro. With a 1-inch sensor camera capable of capturing 6K video up to 30fps, you are now able to record stunning detail not possible before on an aerial platform of this size. Featuring HDR video, intuitive camera controls, and an adjustable aperture with a max ISO of 12,800, EVO II Pro allows you to have exceptional performance and flexibility in any shooting environment.

Included with EVO II Pro is a smart controller featuring a built-in 3.3-inch OLED display, eliminating the need for a mobile device. With a four-hour battery life and an ergonomic, compact design, pilots can easily pack and fly on the go.

FEATURES



Adjustable aperture from f/2.8-f/11



Captures dynamic 20MP stills



Flight times up to 40 minutes



2.4Ghz antennas for up to a 9km range and better reception in urban areas



Allows for the camera to be interchanged without replacing the entire system



12 image sensors create a 3D world for omnidirectional obstacle avoidance

TYPES OF USE



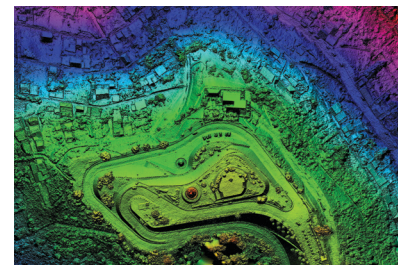
CINEMATOGRAPHY

Professional film creators will find camera controls and features that they have come to expect as the industry standard. Capable of capturing 6K video up to 30fps and 4K video up to 60fps, our EVO II Pro features built-in HDR bracketing and HDR video, 10-12 bit recording, H.265 codec, and A-LOG gamma curve.



PHOTOGRAPHY

With EVO II Pro, photos have never looked so good. Re-experience every moment with exceptional low-light photography and time-lapse capabilities made possible with our 1-inch sensor. With an adjustable aperture from f/2.8-f/11, max ISO of 12,800, built-in HDR bracketing, and 20MP stills, pilots now have unmatched performance and flexibility.



MAPPING

Featuring our new 6K 1-inch sensor, EVO II Pro gives users the highest quality pixels available on a foldable drone. Flexible and intuitive mission planning allows the pilot to create custom waypoints for any job. With SDK available soon for third-party integration, executing your mission is easier than ever.

AIRCRAFT

Takeoff Weight	2.5 - 2.6 lbs
Max Payload (camera attached)	2 lbs
Folded Dimensions	L 9 x W 4.6 x H 4.4 in
Max Speed	Standard: 33.6 mph Ludicrous: 45 mph
Max Service Ceiling	4.35 miles (22,968 ft)
Max Flight Time	Hover: 35min Moving: 40min
Transmission Type	FCC: 2.4GHz ALink
Max Transmission Distance	5.6 miles (29,528 ft)
Storage	Internal: 8GB Max SD: 128GB
Battery Type	LiPo 3s
Battery Size	7,100mAh
Controller Screen	3.3in OLED 330 Nits
Controller Battery	5,000 mAh

SENSING SYSTEM

Sensing Type	12 Omnidirectional computer vision sensors
Detection Range	Forward: 1.62 - 131 feet Downward: 1.62 - 72 feet Backward: 1.62 - 105 feet Sides: 1.62 - 79 feet Upward: 1.62 - 79 feet
FOV	Forward: Horizontal 60° / Vertical 80° Backward: Horizontal 60° / Vertical 80° Upward: Horizontal 60° / Vertical 50° Downward: Horizontal 60° / Vertical 50°

CAMERA PAYLOADS

	EVO II 8K	EVO II Pro 6K	EVO II Dual
Sensor	Sony IMX586	Sony IMX383	FLIR Boson + Sony IMX586
Max Resolution	Stills: 8,000 x 6,000 px Video: 7,680 x 4,320 px	Stills: 5,472 x 3,648 px Video: 5,472 x 3,076 px	Stills: 8,000 x 6,000 px IR: 640 x 512 px
Format	MOV/MP4	MOV/MP4	MOV/MP4
Codec	H.264/H.265	H.264/H.265	H.264/H.265
HDR Support	Yes	Yes	Yes
AF Support	Yes	Yes	Yes
Defog	Yes	Yes	Yes (8k camera only)
Histogram	Yes	Yes	Yes (8k camera only)
10-Bit Log	Yes	Yes	Yes (8k camera only)
Aperture	f1.8	f2.8-f/11	f1.8 (8k camera only)
Zoom	1-8x (4x lossless)	1-8x (3x lossless)	1-8x (4x lossless)
ISO Range	Video: 100 - 3200 Photo: 100 - 3200	Video: 100 - 6400 Photo: 100 - 12800	Video: 100 - 3200 (8k camera only) Photo: 100 - 3200 (8k camera only)
Video Modes	8K / 25fps 4k / 60fps	6K / 30fps 4k / 60fps	8K / 25fps (8k camera only) 4k / 60fps (8k camera only) FLIR 640p / 30fps
Max Video Bitrate	120Mbps	120Mbps	120Mbps
Photo	48 MP	20 MP	48 MP (8k camera only)