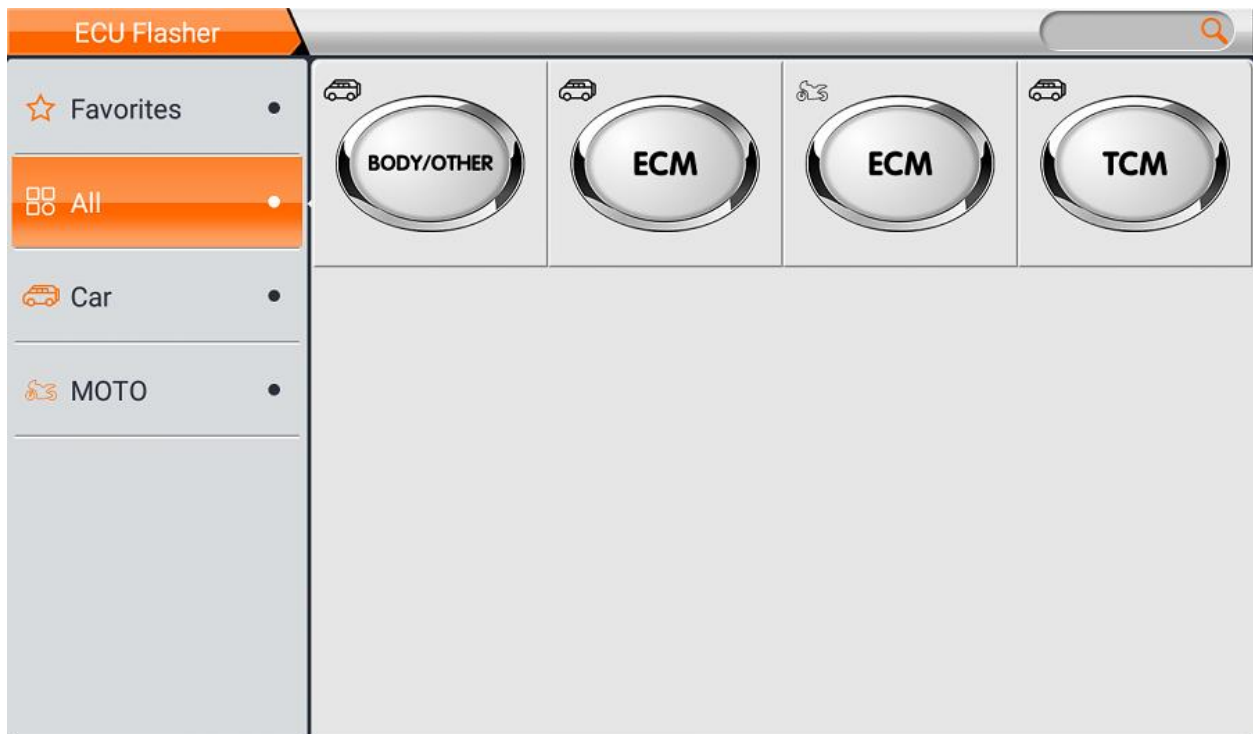
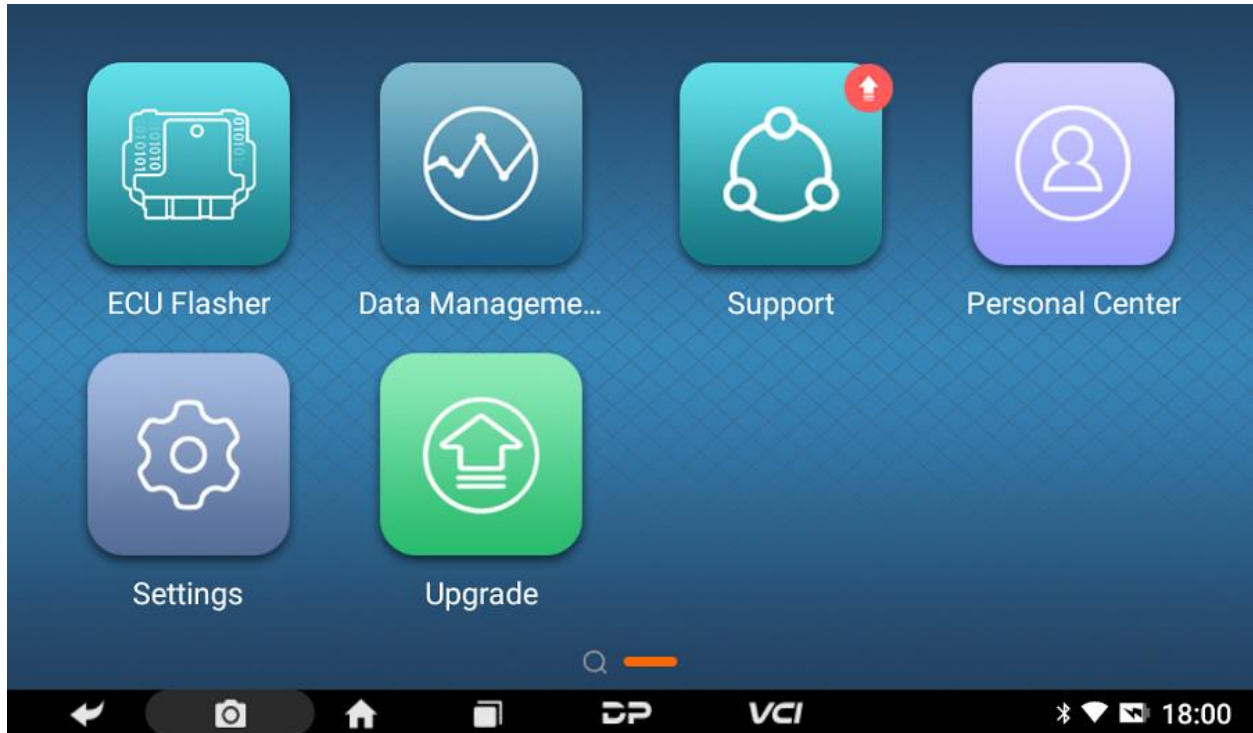


DC706 Function Display

1) Main Page/Brand Supported

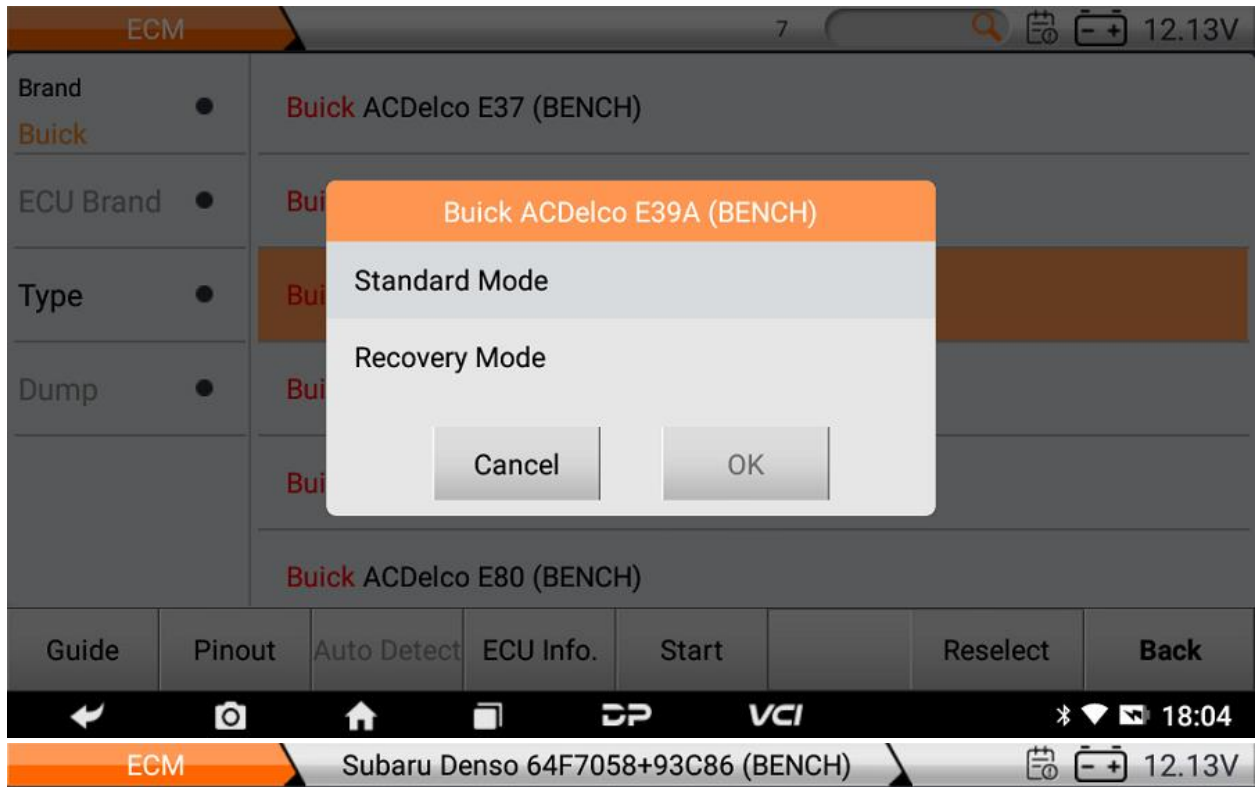


2) ECM Clone for Cars

The image displays two screenshots of an ECM cloning software interface. The top screenshot shows a list of car brands with 'Audi' selected, displaying various Bosch ECU models. The bottom screenshot shows 'Buick' selected, displaying various ACDelco ECU models. Both screens include a navigation bar with options like 'Guide', 'Pinout', 'Auto Detect', 'ECU Info.', 'Start', 'Reselect', and 'Back'.

Brand	ECU Brand	Type	Dump	ECU Model
Audi				Audi Bosch EDC17C46 TC1767 (BENCH+P003)
	Bentley			Audi Bosch EDC17C64 TC1797 (BENCH+P003)
	Bugatti			Audi Bosch EDC17CP44 TC1797 (BENCH+P003)
	Buick			Audi Bosch MED17.1.1 TC1797 (BENCH+P003)
	Cadillac			Audi Bosch MED17.1.6 TC1797 (BENCH+P003)
	Chevrolet			Audi Bosch MED17.5 TC1766 (BENCH+P003)

Brand	ECU Brand	Type	Dump	ECU Model
Buick				Buick ACDelco E37 (BENCH)
				Buick ACDelco E39 (BENCH)
				Buick ACDelco E39A (BENCH)
				Buick ACDelco E67 (BENCH)
				Buick ACDelco E78 (BENCH)
				Buick ACDelco E80 (BENCH)



A

B

ECU	TOOL/设备
B-Pin 120	12V(16)
B-Pin 114	GND(4+5)
B-Pin 87	CAN L(14)
B-Pin 95	CAN H(6)



ECM 📅 🔋 12.12V

function Hex Editor

ECU Info.

Read dflash

Write dflash

Read flash
(MPC5566)

Write flash
(MPC5566)

Connect

Read shadow flash

Disconnect

Read PinCode

Guide
Pinout

Back



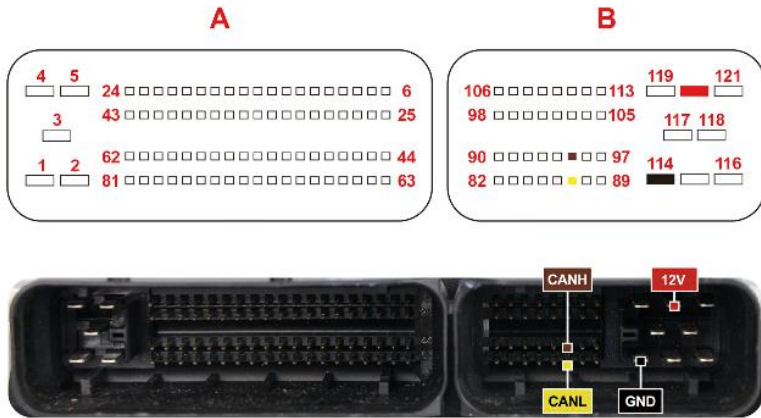
ECM 2 🔍 📅 🔋 12.13V

Brand	●	Subaru Denso 64F7058+93C86 (BENCH)
Subaru	●	Subaru Denso 64F7059+93C86 (BENCH)
ECU Brand	●	
Type	●	
Dump	●	

Guide
Pinout
Auto Detect
ECU Info.
Start

Reselect
Back





ECU	TOOL/设备
B-Pin 120	12V(16)
B-Pin 114	GND(4+5)
B-Pin 87	CAN L(14)
B-Pin 95	CAN H(6)

Back

18:04

ECM 12.12V

function Hex Editor

ECU Info.

Read eeprom
(93C86)

Write eeprom
(93C86)

Read flash
(64F7058)

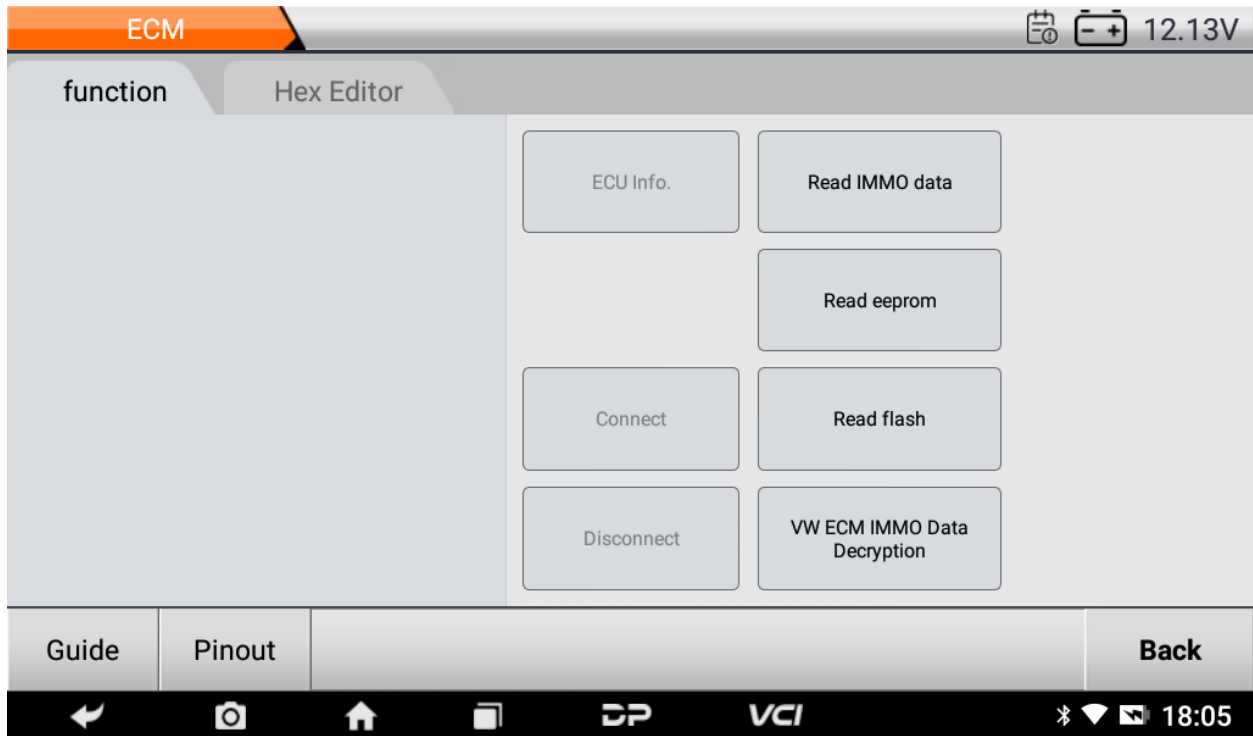
Write flash
(64F7058)

Connect

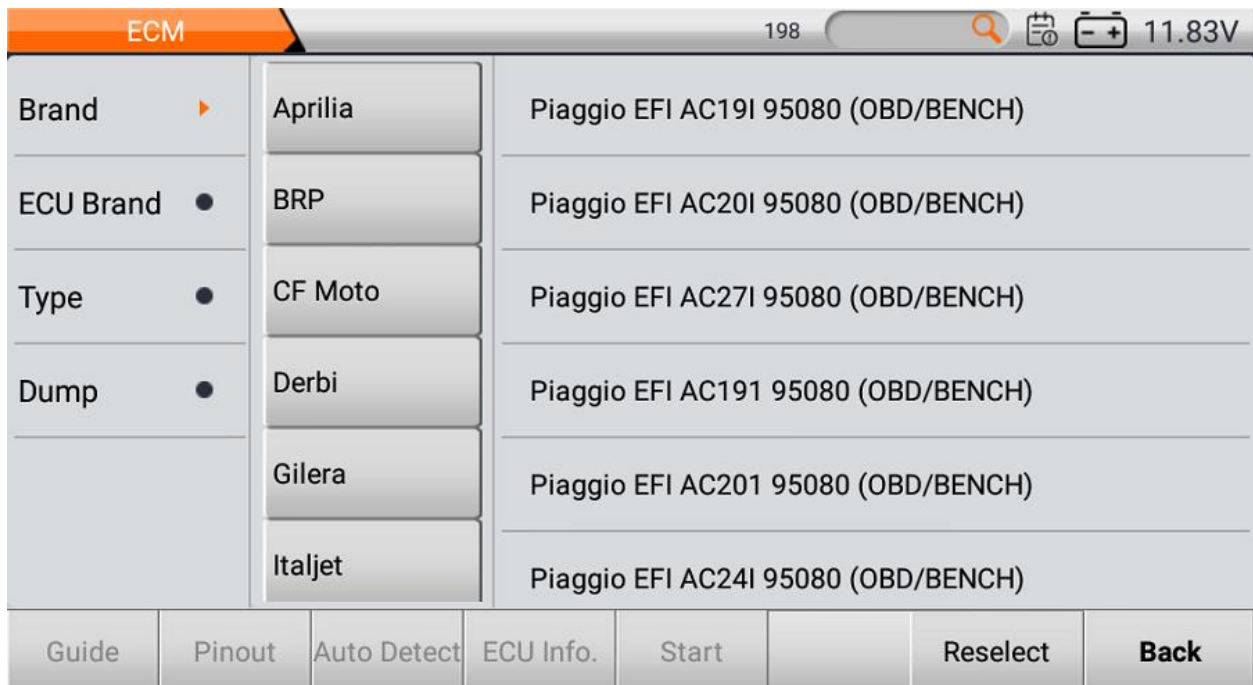
Disconnect

Guide Pinout Back

18:04



3) ECM Clone for Motorcycles



ECM 198 11.83V

Brand	●	Bosch	Piaggio EFI AC19I 95080 (OBD/BENCH)
ECU Brand	▶	Delphi	Piaggio EFI AC20I 95080 (OBD/BENCH)
Type	●	EFI	Piaggio EFI AC27I 95080 (OBD/BENCH)
Dump	●	Marelli	Piaggio EFI AC19I 95080 (OBD/BENCH)
			Piaggio EFI AC20I 95080 (OBD/BENCH)
			Piaggio EFI AC24I 95080 (OBD/BENCH)

Guide Pinout Auto Detect ECU Info. Start Reselect **Back**

ECM 198 11.75V

Brand	●	AC23	Piaggio EFI AC19I 95080 (OBD/BENCH)
ECU Brand	●	AC23I	Piaggio EFI AC20I 95080 (OBD/BENCH)
Type	▶	AC24I	Piaggio EFI AC27I 95080 (OBD/BENCH)
Dump	●	AC25I	Piaggio EFI AC19I 95080 (OBD/BENCH)
		AC27I	Piaggio EFI AC20I 95080 (OBD/BENCH)
		AC2I	Piaggio EFI AC24I 95080 (OBD/BENCH)

Guide Pinout Auto Detect ECU Info. Start Reselect **Back**

ECM 198 11.76V

Brand	●	IAW 15	Piaggio EFI AC19I 95080 (OBD/BENCH)
ECU Brand	●	IAW 5AM HW103	Piaggio EFI AC20I 95080 (OBD/BENCH)
Type	▶	IAW 5AM HW610	Piaggio EFI AC27I 95080 (OBD/BENCH)
Dump	●	IAW M3G(34PINS)	Piaggio EFI AC19I 95080 (OBD/BENCH)
		IMM003	Piaggio EFI AC20I 95080 (OBD/BENCH)
		IMM006	Piaggio EFI AC24I 95080 (OBD/BENCH)

Guide Pinout Auto Detect ECU Info. Start Reselect Back

ECM 198 11.80V

Brand	●	95080	Piaggio EFI AC19I 95080 (OBD/BENCH)
ECU Brand	●	95160	Piaggio EFI AC20I 95080 (OBD/BENCH)
Type	●	95320	Piaggio EFI AC27I 95080 (OBD/BENCH)
Dump	▶	95640	Piaggio EFI AC19I 95080 (OBD/BENCH)
		MC68HC05E6	Piaggio EFI AC20I 95080 (OBD/BENCH)
		MC68HC11F1	Piaggio EFI AC24I 95080 (OBD/BENCH)

Guide Pinout Auto Detect ECU Info. Start Reselect Back

Brand	●	Piaggio Marelli MIU G4 95640 (BENCH)
Piaggio		
ECU Brand	●	
Type	●	
MIU G4		
Dump	●	

function Hex Editor

ECU Info.	Read eeprom (95640)	Write eeprom (95640)
		Reset ECU(Virgin)
Connect		Clear Fault Codes
Disconnect		

ECM Piaggio Marelli MIU G4 95640 (BENCH) 12.47V

function Hex Editor

Initializing...
Reading ECU info

ECU Info.

Drawing number: CM316201
 HW number: 32M4G1HW515
 HW Version: 00
 Calibration: 56BGZZZ4
 SW Version: 0000
 Homologation No.: G01
 ISO Code: D10C0001B3
 Prog. Date: 2020/10/23
 NIP Code: G6W094GAW

OK

Write eeprom (95640)
Reset ECU(Virgin)
Clear Fault Codes

Guide Pinout Back

ECM Piaggio Marelli MIU G4 95640 (BENCH) 12.48V

function Hex Editor

Initializing...
Reading ECU info...

Drawing number: CM316201
 HW number: 32M4G1HW515
 HW Version: 00
 Calibration: 56BGZZZ4
 SW Version: 0000
 Homologation No.: G01
 ISO Code: D10C0001B3
 Prog. Date: 2020/10/23
 NIP Code: G6W094GAW
 -----2022-11-23 11:49:23-----

ECU Info.

Read eeprom (95640)

Write eeprom (95640)

Reset ECU(Virgin)

Connect

Clear Fault Codes

Disconnect

Guide Pinout Back

4) TCM Clone

TCM		78				
Brand	<input type="radio"/> AUDI	AUDI TEMIC DQ200(0AM/0CW) DQ200Dxx TC1766 (BENCH)				
ECU Brand	<input type="radio"/> BENZ	SEAT TEMIC DQ200(0AM/0CW) DQ200Dxx TC1766 (BENCH)				
Type	<input type="radio"/> BUICK	SKODA TEMIC DQ200(0AM/0CW) DQ200Dxx TC1766 (BENCH)				
Dump	<input type="radio"/> CADILIAC	VW TEMIC DQ200(0AM/0CW) DQ200Dxx TC1766 (BENCH)				
	<input type="radio"/> CHEVROLET	AUDI TEMIC DQ200(0AM/0CW) DQ200-MQB TC1766 (BENCH)				
	<input type="radio"/> CHRYSLER	SEAT TEMIC DQ200(0AM/0CW) DQ200-MQB TC1766 (BENCH)				
Guide	Pinout	Auto Detect	ECU Info	Start	Reselect	Cancel

TCM		78				
Brand	<input type="radio"/> ACDelco	AUDI TEMIC DQ200(0AM/0CW) DQ200Dxx TC1766 (BENCH)				
ECU Brand	<input type="radio"/> GETRAG	SEAT TEMIC DQ200(0AM/0CW) DQ200Dxx TC1766 (BENCH)				
Type	<input type="radio"/> GM	SKODA TEMIC DQ200(0AM/0CW) DQ200Dxx TC1766 (BENCH)				
Dump	<input type="radio"/> TEMIC	VW TEMIC DQ200(0AM/0CW) DQ200Dxx TC1766 (BENCH)				
		AUDI TEMIC DQ200(0AM/0CW) DQ200-MQB TC1766 (BENCH)				
		SEAT TEMIC DQ200(0AM/0CW) DQ200-MQB TC1766 (BENCH)				
Guide	Pinout	Auto Detect	ECU Info	Start	Reselect	Cancel

TCM		78				
Brand	<input type="radio"/>	6L45	AUDI TEMIC DQ200(0AM/0CW) DQ200Dxx TC1766 (BENCH)			
ECU Brand	<input type="radio"/>	6L50	SEAT TEMIC DQ200(0AM/0CW) DQ200Dxx TC1766 (BENCH)			
Type	<input type="radio"/>	6L80	SKODA TEMIC DQ200(0AM/0CW) DQ200Dxx TC1766 (BENCH)			
Dump	<input type="radio"/>	6L90	VW TEMIC DQ200(0AM/0CW) DQ200Dxx TC1766 (BENCH)			
		6T30	AUDI TEMIC DQ200(0AM/0CW) DQ200-MQB TC1766 (BENCH)			
		6T35	SEAT TEMIC DQ200(0AM/0CW) DQ200-MQB TC1766 (BENCH)			
Guide	Pinout	Auto Detect	ECU Info	Start	Reselect	Cancel

TCM		78				
Brand	<input type="radio"/>	SPC564A	AUDI TEMIC DQ200(0AM/0CW) DQ200Dxx TC1766 (BENCH)			
ECU Brand	<input type="radio"/>	TC1766	SEAT TEMIC DQ200(0AM/0CW) DQ200Dxx TC1766 (BENCH)			
Type	<input type="radio"/>	TC1784	SKODA TEMIC DQ200(0AM/0CW) DQ200Dxx TC1766 (BENCH)			
Dump	<input type="radio"/>		VW TEMIC DQ200(0AM/0CW) DQ200Dxx TC1766 (BENCH)			
			AUDI TEMIC DQ200(0AM/0CW) DQ200-MQB TC1766 (BENCH)			
			SEAT TEMIC DQ200(0AM/0CW) DQ200-MQB TC1766 (BENCH)			
Guide	Pinout	Auto Detect	ECU Info	Start	Reselect	Cancel

TCM 6

Brand	●	CHRYSLER GETRAG MPS6 TC1766 (BENCH)
ECU Brand	●	DODGE GETRAG MPS6 TC1766 (BENCH)
Type	●	FORD GETRAG MPS6 TC1766 (BENCH)
MPS6		
Dump	●	LAND ROVER GETRAG MPS6 TC1766 (BENCH)
		VOLVO GETRAG MPS6 TC1766 (BENCH)
		RENAULT GETRAG MPS6 TC1766 (BENCH)

Guide Pinout Auto Detect ECU Info Start Reselect Cancel

TCM 6

Guide [X]

Function Description:

- Function: Display the operation flow of the executive function;
- HEX Editor: Display read eeprom/flash data, can edit and save read or loaded data;
- ECU Info: Obtain TCM model, part number, software version and other information;
- Connect: After connecting according to [Pinout], click "Connect" to let TCM enter the service mode;
- Disconnect: After all read and write operations are completed and confirmed, click "Disconnect" and turn off the power switch on the P004 adapter as prompted to disconnect from the TCM.
- Read INT/EXT eeprom: Read the eeprom data from the TCM and enter the file name to save the data.
- Read flash: Reads the TCM flash data. After reading the TCM flash data, enter the file name to save the data.
- Write INT/EXT eeprom: To write eeprom data to the TCM, select the eeprom data in the HEX editor or select the eeprom file to be written.

Guide Cancel

TCM

6

Brand

ECU Brand

Type

MPS6

Dump

Guide

Cancel

Guide ✕

- Write INT/EXT eeprom: To write eeprom data to the TCM, select the eeprom data opened in the HEX editor or select the eeprom file to be written.
- Write flash: To write flash data to the TCM, select the flash data opened in the HEX editor or select the flash file to be written.

Operation Introduction:

- **Connect** : After connecting the device, P004 adapter, and TCM according to [Pinout], click Connect to enable the TCM to enter service mode. After the connection is successful, other buttons will be activated except the Connect button. You can select any function to test.
- **Read INT/EXT eeprom** : After reading the eeprom data from the TCM, enter the file name to save the file. The file saving path is displayed on the function page. Click the HEX editor to open the eeprom data by default.
- **Read flash** : After reading the TCM flash data, enter the file name to save the file. The save path is displayed on the function page. Click the HEX editor to open the read flash data by default.
- **Write INT/EXT eeprom** : Write eeprom data, select write HEX editor open data or load eeprom data to be written(**Note: Ensure that the HEX editor opens or loads data to be written with integrity and correctness**) ;

TCM

6

Brand

ECU Brand

Type

MPS6

Dump

Guide

Cancel

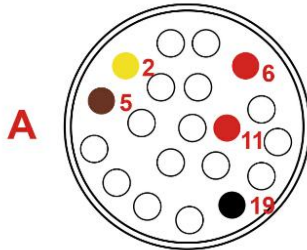
Guide ✕

is displayed on the function page. Click the HEX editor to open the read flash data by default.

- **Write INT/EXT eeprom** : Write eeprom data, select write HEX editor open data or load eeprom data to be written(**Note: Ensure that the HEX editor opens or loads data to be written with integrity and correctness**) ;
- **Write flash** : Write flash data. Select write data opened in HEX editor or load flash data to be written(**Note: Ensure that the HEX editor opens or loads data to be written with integrity and correctness**) ;
- **Disconnect** : Disconnect(**Special note: Make sure that all read and write operations have been completed and that the data written to them is complete, otherwise disconnecting may cause irreversible risk!!**) ;


Note :

- Check the TCM model before you perform the function.
- Ensure the integrity and correctness of the data to be written into the eeprom/flash function.
- Before disconnecting, ensure that all read and write operations have been completed and the data written to them is complete. Otherwise, disconnecting may cause irreversible risk!!



ECU	TOOL/设备
A-Pin 6	12V(16)
A-Pin 11	12V(16)
A-Pin 19	GND(4+5)
A-Pin 2	CAN L(14)
A-Pin 5	CAN H(6)

Ok

TCM


function Hex Editor

ECU Info

Read INT eeprom

Write INT eeprom

Read EXT eeprom

Write EXT eeprom

Connect

Read flash

Write flash

Disconnect

Pinout
Guide
Back

TCM FORD GETRAG MPS6 TC1766 (BENCH)

function Hex Editor

Turn on the ignition...
 Checking security 1...
 Writing bootloader...
 Communicating...
 Checking security 2...
 Communicating...
 The ECU is connected successfully, and you can continue to perform the corresponding read/write operation!
 -----2022-11-23 15:02:31-----
 Initializing...
 Reading eeprom...
 Read succeeded. The path to save the data is:0:\storage\emulated\0\DP\953499990002\DATA\MPS6_Read_INT_eeprom_1123153057.BIN
 -----2022-11-23 15:31:16-----

ECU Info Read INT eeprom Write INT eeprom

Read EXT eeprom Write EXT eeprom

Connect Read flash Write flash

Disconnect

Pinout Guide Back

5) Body/Other Clone

BODY/OTHER 45 12.12V

Brand	FCA	FCA KeyLess Continental 9S12XEQ384/9S12XEG384/9S12XET512+95640...
Module	Ford	Ford BCM Continental 4L00M(9S12DP512) (BENCH)
ECU Brand	GM	Ford BCM Delphi M30882F+95320(25320) (BENCH)
Type	Jaguar	Ford BCM Lear MC9S12XEP768 (BENCH)
Dump	PSA	Ford BCM Siemens 4L00M(9S12DP512) (BENCH)
	Smart	Ford BSI Delphi 70F3379+93C86 (BENCH)

Guide Pinout Auto Detect ECU Info. Start Reselect Back

18:00

BODY/OTHER 9 12.13V

Brand	●	BCM	GM BCM Bosch 70F3558+24C32 (BENCH)
GM			
Module	▶	EPS	GM BCM Bosch 70F3385+24C16 (BENCH)
ECU Brand	●		GM BCM Bosch 70F3469+24C16 (BENCH)
Type	●		GM BCM Continental 70F3469+95160(25160) (BENCH)
Dump	●		GM BCM Continental 70F3558+95320(25320) (BENCH)
			GM BCM Delphi 70F3238+93C86 (BENCH)

Guide Pinout Auto Detect ECU Info. Start Reselect **Back**

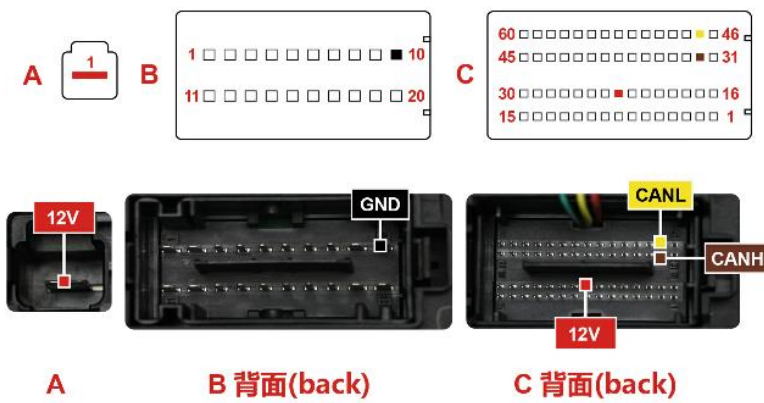
VCI 18:00

BODY/OTHER 8 12.13V

Brand	●	Bosch	GM BCM Bosch 70F3558+24C32 (BENCH)
GM			
Module	●	Continental	GM BCM Bosch 70F3385+24C16 (BENCH)
BCM			
ECU Brand	▶	Delphi	GM BCM Bosch 70F3469+24C16 (BENCH)
Type	●		GM BCM Continental 70F3469+95160(25160) (BENCH)
Dump	●		GM BCM Continental 70F3558+95320(25320) (BENCH)
			GM BCM Delphi 70F3238+93C86 (BENCH)

Guide Pinout Auto Detect ECU Info. Start Reselect **Back**

VCI 18:00



ECU	TOOL/设备
A-Pin 1	12V(16)
C-Pin 23	12V(16)
B-Pin 10	GND(4+5)
C-Pin 47	CAN L(14)
C-Pin 32	CAN H(6)

function Hex Editor

ECU Info. Read dflash (70F3633) Write dflash (70F3633)

Read flash (70F3633) Write flash (70F3633)

Connect

Disconnect

Guide Pinout Back

18:01

BODY/OTHER 14 🔍 📅 🔋 12.11V

Brand	●	AIRBAG	Volvo CCM Alps MPC5516 (BENCH)
Volvo			
Module	▶	CCM	Volvo EPS XC164CS (BENCH)
ECU Brand	●	EPS	Volvo KVM Continental MC9S12DG256 (BENCH)
Type	●	KVM	Volvo MIRROR 0K75F (BENCH)
Dump	●	MIRROR	Volvo MIRROR 0L85D (BENCH)
		PHM	Volvo MIRROR 3L40K (BENCH)

Guide Pinout Auto Detect ECU Info Start Reselect **Back**

⏪ 📷 🏠 📁 ⚡ VCI 🔗 📶 🔋 18:02

BODY/OTHER 📅 🔋 12.13V

function Hex Editor

ECU Info.

Read flash (MPC5516)

Write flash (MPC5516)

Connect

Disconnect

Guide Pinout **Back**

⏪ 📷 🏠 📁 ⚡ VCI 🔗 📶 🔋 18:02

BODY/OTHER 1 🔍 📅 🔋 12.13V

Brand	●	FCA KeyLess Continental 9S12XEQ384/9S12XEG384/9S12XET512+95640 (BENCH)
FCA		
Module	●	
ECU Brand	●	
Type	●	
Dump	●	

Guide Pinout Auto Detect ECU Info. Start Reselect Back

⏪ 📷 🏠 📁 DP VCI 🔗 📶 🔋 18:03

BODY/OTHER 📅 🔋 12.12V

function Hex Editor

ECU Info.	Read eeprom (95640)	Write eeprom (95640)
	Read dflash	Write dflash
	Read pflash (9S12XEQ384)	Write pflash (9S12XEQ384)
	Read pflash (9S12XEG384)	Write pflash (9S12XEG384)
Connect	Read pflash (9S12XET512)	Write pflash (9S12XET512)
Disconnect	Read PinCode	

Guide Pinout Back

⏪ 📷 🏠 📁 DP VCI 🔗 📶 🔋 18:03