



2-IN-1 GRILL & GRIDDLE
**ELECTRIC SMOKELESS
INDOOR GRILL**

USER MANUAL

Model No.: GW88000



Please read through this manual carefully before use

 **IMPORTANT SAFEGUARDS AND TIPS**

WWW.GOWISEUSA.COM

THANK YOU FOR YOUR PURCHASE!

Join

the GoWISE Community on Facebook, Instagram, Twitter, and Pinterest for updates, tips, and great deals!



Explore

recipes on our recipe App or www.gowiseproducts.com/blogs/recipes



Contact Our Customer Care Team

855-233-9199

support@gowiseusa.com

Live Chat at gowiseusa.com

M-F 8:30am - 4:00pm MST



Register Your Product

www.gowiseproducts.com/apps/product-registration

(The serial number is normally underneath the product. Please check there first.)



Specifications

Voltage: 120V, 60Hz

Watts: 1300W

Temp. Range: up to 482°F



TABLE OF CONTENTS

- Register Your Product..... 2**
- Specifications..... 2**
- Important Safeguards..... 4**
- Product Structure..... 6**
- Using the Controls..... 7**
- General Operating Instructions..... 8**
 - Before First Use..... 8
 - Using the Smokeless Indoor Grill..... 9
 - Tips..... 10
- Cooking Guide..... 11**
 - Internal Temperature Chart..... 11
- Care & Cleaning..... 12**
- Troubleshooting..... 13**
- Warranty..... 14**

IMPORTANT SAFEGUARDS

HOUSEHOLD USE ONLY • READ ALL INSTRUCTIONS BEFORE USE

1. **READ THE ENTIRE MANUAL BEFORE ATTEMPTING TO OPERATE.**
2. **NEVER IMMERSE** the main unit housing, which contains electrical components and heating elements, in water. **DO NOT** rinse under the tap.
3. **TO AVOID ELECTRIC SHOCK, DO NOT** put liquid of any kind into the main unit housing containing the electrical components.
4. **MAKE SURE** to remove all of the styrofoam before use.
5. This appliance has a polarized plug (one prong is wider than the other). This plug is intended to fit into a polarized outlet only one way. **TO AVOID ELECTRIC SHOCK, DO NOT** force the plug into the outlet if it does not fit. If the plug does not fit fully into the outlet, reverse the plug. If it still does not fit, contact a qualified electrician. **DO NOT ATTEMPT** to modify the plug in any way.
6. **MAKE SURE** to plug the appliance into a wall socket.
7. While cooking, the internal temperature of the unit reaches several hundred degrees Fahrenheit. **TO AVOID PERSONAL INJURY**, never place hands inside the unit unless it is thoroughly cooled.
8. This appliance is **NOT INTENDED FOR USE** by persons with reduced physical, sensory, or mental capabilities or persons with a lack of experience and knowledge unless they are **UNDER THE SUPERVISION** of a responsible person or have been given proper instruction to use the appliance.
9. This appliance is **NOT INTENDED FOR USE** by children. Keep the appliance and its power cord **OUT OF THE REACH** of children when it is in operation or the cooling process.
10. When cooking, **DO NOT PLACE** the appliance against a wall or other appliances. Leave at least 5 in. free space on the back and sides and above the appliance. **DO NOT** place anything on top of the appliance. There is constant heat emitting from all sides of the appliance. Proper precautions must be taking to prevent the risk of burns, fires, or other injury to persons or damage to property.
11. **DO NOT USE** this unit if the plug, the power cord, or the appliance itself is damaged in any way.
12. **KEEP THE POWER CORD AWAY** from hot surfaces. **DO NOT PLUG** in the power cord or operate the unit controls with wet hands.
13. **DO NOT PLACE** the appliance on stove top surfaces.
14. **DO NOT USE** outdoors.
15. **NEVER CONNECT** this appliance to an external timer switch or a separate remote control system.

IMPORTANT SAFEGUARDS

HOUSEHOLD USE ONLY • READ ALL INSTRUCTIONS BEFORE USE

- 16. NEVER USE** this appliance with an extension cord of any kind.
- 17. DO NOT OPERATE** the appliance on or near combustible materials, such as tablecloths and curtains.
- 18. DO NOT USE** the **GoWISE USA Electric Smokeless Indoor Grill** for any purpose other than described in this manual.
- 19. NEVER OPERATE** the appliance unattended.
- 20. ALWAYS WEAR OVEN MITTS** when handling hot components or touching hot surfaces.
- 21.** Should the the unit emit black smoke, **UNPLUG IMMEDIATELY** and wait for smoking to stop before removing grill contents.
- 22. ALWAYS** operate the appliance on a horizontal surface that is level, stable, noncombustible and heat resistant.
- 23.** This appliance is designed for **HOUSEHOLD USE ONLY**. It is not intended for use in commercial or retail environments.
- 24.** If the **GoWISE USA Electric Smokeless Indoor Grill** is used improperly, for professional or semi-professional purposes, or if it is not used according to the instructions in this user manual, the warranty becomes invalid, and the manufacturer will not be held liable for damages.
- 25. ALWAYS** unplug the appliance after use.

- 26. ALWAYS** wait 30 minutes for the appliance to cool down before handling, cleaning, or storing.

Electricity

If the electrical circuit is overloaded with other appliances, your new unit may not operate properly. This unit should be operated on a dedicated electrical circuit.

Electromagnetic Fields (EMF)

This appliance complies with all standards regarding Electromagnetic Fields (EMF). Under proper handling, the appliance is safe to use based on available scientific evidence.

Shut-Off

You can manually shut off the appliance by turning the dial all the way to MIN at any time during cooking.

**SAVE THESE
INSTRUCTIONS**

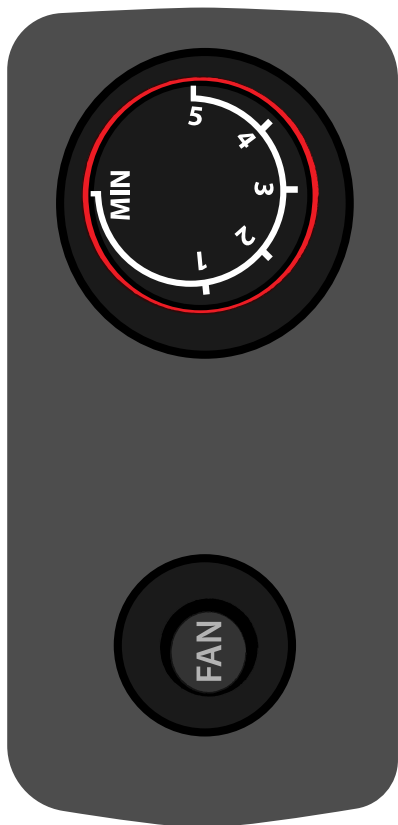
PRODUCT STRUCTURE

PARTS

1. Griddle Surface
2. Grill Surface
3. Heating Element with Attached Power Cord
4. Drip Tray
5. Collection Pan + Water Tray
6. Appliance Base
7. Electric Fan (removable)
8. Fan Cover



USING THE CONTROLS



- 1.** Choose whether the Grill or Griddle surface is necessary for the intended ingredients.
- 2.** Plug power cord into a wall socket (make sure the polarized plug fits).
- 3.** Fill the Collection Pan/Water Tray with approximately 1 cup of water to prevent smoke.
- 4.** Set temperature dial between 1-5 (depending on ingredients and desired texture and doneness).
- 5.** Turn on Electric Fan by pressing the button labeled FAN.
- 6.** Allow Grill or Griddle to reach the desired temperature before placing ingredients onto the cooking surface.
- 7.** Cook until desired temp, texture, doneness.
- 8.** Remove and enjoy!
- 9.** When you are finished grilling, turn the dial to MIN and press the FAN button to shut down the unit. Unplug the power cord and allow to cool fully before disassembling for cleaning.

GENERAL OPERATING INSTRUCTIONS

BEFORE FIRST USE

1. Remove all packaging materials, stickers, labels, and styrofoam.
2. Hand wash the Non-stick Grill Plate, Non-stick Griddle Plate, and Collection Pan with warm, soapy water.
3. Wipe the inside and outside of the Base Unit with clean, moist cloth. **NEVER** wash or submerge the Heating Element, Electric Fan, or Base Unit in water or liquid of any kind.
4. Finally, heat up unit for a few minutes to burn off any residue.
5. Your new **GoWISE USA Electric Smokeless Indoor Grill** is now ready for use!

NOTES:

- Unpack all listed contents from packaging. Please remove any clear or blue protective film on the components before use.
- Please make sure that your GoWISE USA Electric Smokeless Indoor Grill has been shipped with the components that you ordered. Check everything carefully before use. If any part is missing or damaged, do not use this product. Contact Customer Care Team using the contact information located in the back of the user's manual.
- This unit has been designed and engineered to reduce smoke and visible vapors usually associated with grilling to a minimum; delivers outdoor results indoors.

WARNING: Because the cooking surfaces are non-stick, never use metal cooking utensils – which can scratch away the non-stick coating. Never wash or scrape with abrasive cleaning sponges or steel wool.

CAUTION: Wait for all components to cool thoroughly after use before disassembling. Always handle hot components with oven mitts while cooking.

GENERAL OPERATING INSTRUCTIONS

USING THE ELECTRIC SMOKELESS INDOOR GRILL

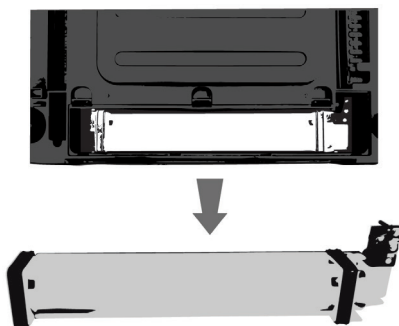
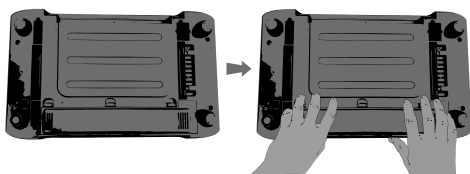
1. Place the appliance on a stable, level horizontal, and heat-resistant surface.
2. Assemble the unit as shown on page 6.
3. Add about 1 cup of water to the Collection Pan/Water Tray.
IMPORTANT FOR SMOKELESS GRILLING - DO NOT SKIP THIS STEP!
4. Leave ample air space on all sides of the unit to facilitate air flow.
5. Plug the Power Cord into a dedicated outlet.
6. If you are starting with a cold grill, you may preheat the grill using a medium or high heat setting for 4-6 minutes.
7. Prepare and season your food according to your favorite recipe. You may spray or wipe the Grill Plate or Griddle Plate's surface with cooking oil.
8. Select the cooking temperature, add the food, and grill to your taste. Turn the food as needed.

Removing the Electric Fan

If you plan to thoroughly clean the Base Unit with water and detergents, remove the Electric Fan. When replacing the fan, make sure to insert the two-prong connection into the receptacle.

CAUTION: Unplug unit before removing the fan.

1. Disassemble the Appliance.
2. Turn over the Base Unit.
3. Unclip the three securing clamps on the Fan Cover.
4. Lift the Fan out of the Base Unit.



GENERAL OPERATING INSTRUCTIONS

TIPS

- Be careful not to transfer germs from raw meat to cooked meat. Use separate utensils and platters for raw and cooked meat.
- Always marinate in a tightly covered nonmetal dish and turn the food occasionally. Be sure to refrigerate all meats while marinating.
- If the leftover wet marinade is to be used as a sauce with the cooked food, be sure to place it in a small pan and heat to a rolling boil before serving to eliminate bacterial growth.
- Similar to a stove top frying pan, grease from high-fat foods, such as bacon or sausage, may splatter on the countertop. Protect the countertop as necessary.
- Before grilling, partially cook bone-in chicken, ribs, and uncooked smoked or fresh sausages for best results. If not partially cooked, these meats may become over browned on the outside before the center is done.
- To prevent scratching the coating, use only nonmetallic utensils. Do not cut food on the grill or griddle plate using sharp utensils, such as forks or knives that can scratch the cooking surface.
- Do not use steel wool or other metal pads. They could leave course scratches. Always rinse thoroughly and dry immediately with a soft towel.
- Make sure to empty contents from the Collection Pan/Water Tray before moving or storing the base unit.

COOKING GUIDE

INTERNAL TEMPERATURE CHART

This chart should be used to check the temperature of cooked meats. Always review USDA Food Safety Standards.

Food	Time	Internal Temperature	When it's done
Fish	12-15 min	155°F	Opaque/Flaky
Shrimp	2-4 min	155°F	Opaque & Red Edges
Chicken Legs	30-45 min	176°F	Juice Runs Clear
Chicken Breast	20-25 min	176°F	Juice Runs Clear
Kababs	12-15 min	Your Preference	Your Preference
Steak	3-9 min	140°F-165°F	Your Preference
Pork Chops	20-25 min	160°F	No Pink Meat
Burgers	10-15 min	160°F	Your Preference
Sausages	15-25 min	160°F	No Pink Meat
Bacon	1-2 min	N/A	Crispy

NOTES:

- Use a meat thermometer to check internal meat temperature.
- Cooking times are suggested and will vary depending on the thickness of the food and personal preferences. Foods can be grilled at maximum temperature. However, you may wish to reduce the temperature for certain items. Low temperatures will keep foods warm once cooked.

CARE & CLEANING

- Before cleaning, be sure to unplug the cord from the outlet. If necessary, wipe the cord with a damp cloth.
- **ALWAYS WAIT UNTIL THE UNIT HAS COOLED COMPLETELY BEFORE HANDLING.** The Grill Plate, Drip Tray, Collection Pan, and Griddle Plate can be placed in the bottom rack of the dishwasher or washed by hand. The base unit can be washed by hand with a warm, damp cloth and mild cleaning liquid. For more thorough cleaning of the base unit, remove the Electric Fan (see page 9 for instruction).
- Always be sure to wash the Grill or Griddle surface after each use to remove any grease that may have accumulated. To keep grease from dripping outside of the base, always ensure that you are using your Grill on a level surface and that the Drip Tray is completely clear of food particles.
- Do not use scouring pads or harsh cleaners on this unit. If necessary, use a nylon bristle brush or plastic scrubbing pad.

TROUBLESHOOTING

If your unit is not working properly:

- Make sure the power cord is plugged into a working electrical wall socket.
- Make sure the temperature knob has been turned to at least 1.
- The unit may not be able to draw enough operating power from the outlet. Try switching the power cord to an outlet that has no other appliances attached to it.
- If food is undercooked or overcooked, change the cooking time and temperature accordingly (refer to the INTERNAL TEMPERATURE CHART on page 11).
- If the Electric Fan is not working, the assembly may not be fully connected. Disassemble the unit and reattach the Fan component. Follow instructions on page 9.

If you encounter any issues or have any questions regarding your new product, please contact our Customer Care Team.

855-233-9199

support@gowiseusa.com

Live Chat at gowiseusa.com

M-F 8:30am - 4:00pm MST

California Proposition



65 Warning



WARNING: This product contains chemicals known to the State of California to cause cancer and/or reproductive harm, and birth defects or other reproductive harm.

ADVERTENCIA: Este producto contiene productos químicos reconocidos por el estado de California que provocan cáncer o daños reproductivo, defectos de nacimiento u otros daños reproductivos.

For more information: www.P65Warnings.ca.gov

WARRANTY

GoWISE USA warrants all products against defects in materials and workmanship for **one (1) year** effective from the date of purchase.

GoWISE USA will replace any products that are found to be defective due to manufacturer flaws based on eligibility. Refunds issued by GoWISE USA must be purchased directly from GoWISE USA and are only available to the original purchaser within the first 30 days. We do not issue refunds for items bought by thirdparty retailers.

This warranty extends only to personal use and does not extend to products that has been used for commercial, rental or any other use this product was not intended for. There are no warranties other than the warranties expressly set forth with each product.

This warranty is non-transferrable. GoWISE USA is not responsible in any way for any damages, losses, or inconveniences caused by equipment failure by user negligence, abuse, or use noncompliant with the user manual or any additional safety, use, or warnings included in the product packaging and manual.

This warranty only covers purchases within the 48 contiguous states of United States of America. For purchases made outside the 48 contiguous states, such as AK, HI, PR, or Canada, we will replace the unit under the one-year warranty upon receipt of a proven defect by video or picture. However, the replacement will only ship to a freight forwarder or address within the 48 contiguous United States. The consumer is responsible for arranging shipment outside of the 48 contiguous states.

GoWISE USA assumes no liability for damage caused using this product other than for its intended use or as instructed in the user manual. Some states do not allow this exclusion or limitation of incidental or consequential losses, so the foregoing disclaimer may not apply to you. This warranty gives you specific legal rights and you may also have other rights which may vary from state to state.

ALL EXPRESSED AND IMPLIED WARRANTIES INCLUDING THE WARRANTY OF MERCHATIBILITY, ARE LIMITED TO THE PERIOD OF THE LIMITED WARRANTY.

NOTE: General Warranty excludes refurbished / auction items.

WARRANTY

Additional 60-Days Warranty

You can extend your 1-year warranty by an additional 60 days. Log onto [www.gowiseproducts.com/apps/ product-registration](http://www.gowiseproducts.com/apps/product-registration) and register your product within the first 14 days of your purchase for the extended warranty.

DEFECTIVE PRODUCTS & RETURNS

If your product is defective within the 1-year warranty period, please email our Customer Care Team at support@gowiseusa.com. To expedite your issue, please provide the 4 items below:

1. Copy of the invoice, order information, or gift receipt showing the date of purchase
2. Serial number, usually found on a sticker located on the bottom on back of the unit
3. Picture or video of the issue or defect that you are experiencing
4. Shipping address information

Authorized Retailers:

Amazon

GoWISE USA

WayFair

Houzz

Home Depot

etailz

MorningSave.com

Bed Bath & Beyond

Jet.com

Walmart.com

Macy's

GoWISEUSA®

WWW.GOWISEUSA.COM

855-233-9199

support@gowiseusa.com

Live Chat at gowiseusa.com

M-F 8:30am - 4:00pm MST

- To ensure the correct use of this appliance, read these instructions carefully and thoroughly.
- Please keep this manual for future reference.
- Thank you for purchasing this GoWISE USA Electric Smokeless Indoor Grill.

USE PROMO CODE: **LIVewiseraF**

**10%
OFF**

YOUR NEXT **GoWISEUSA®** PURCHASE

