



DRAWERED UNDERCOUNTER REFRIGERATORS

Back Mounted Condensing Unit

ETB – Series

• ETBR1-D2 • ETBSR2-D2 • ETBR2-D4 • ETBWR2-D4 • ETBR3-D2

Cabinet Construction

Heavy duty stainless steel interior and exterior, and galvanized steel finished bottom and back wall of exterior. High quality 16 gauge stainless steel worktop, ABS evaporator drain cover. 2.5" thick high density foamed-in-place polyurethane insulation. Four 4" diameter casters (front casters with brakes). Door and drawer heater installation around inside cabinet frame to prevent moisture build-up.

Refrigeration System

- Back mounted condensing unit
- Oversized condenser and evaporator coil cools to set and maintain temperature in minimum time period
- Forced-air cooling with oversized evaporator fan motors providing balanced airflow throughout cabinet to ensure faster temperature drop
- Slide-out condensing unit for convenient repair and maintenance
- Front air breathing for built-in applications
- Environmentally friendly CFC free R-134A refrigerant
- Air defrost controlled by electrical timer
- Copper tube and aluminum fin evaporator with anti-corrosive coating
- Energy efficient condensate drain pan assembly heated by high side copper tube
- Pressure relief port located at exterior back wall for rapid re-entry
- Pre-wired and ready to plug, 115V/60Hz/1Ph, NEMA 5-15P

Doors & Drawers

- Heavy duty stainless steel interior and exterior
- 2.5" thick foamed-in-place polyurethane insulation
- Rounded corners for a sleek and modern appearance
- Heavy duty adjustable torsion spring self-closing door system
- One piece snap-in magnetic door and drawer gasket for easy replacement
- Heavy duty recessed door handles for a flat surface
- Heavy duty 304 stainless steel drawer frames and pan dividers
- Low friction bearing slides for easy opening and closing

Shelving (Model ETBR3-D2)

- Two epoxy coated wire shelves per door
- 304 stainless steel pilasters and shelf clips

Temperature Control

- Factory preset temperature, 35°F
- Temperature setting range from 33°F to 41°F
- Easy to read digital temperature display
- Easy to program push button temperature control
- Microchip digital monitoring system with a variety of functions to monitor and maintain optimum temperature
(Note: digital controls applied to models manufactured from April 2013)

Option

- Stainless steel backsplash for worktop use



ETBR1-D2



ETBSR2-D2



ETBR2-D4



ETBWR2-D4



ETBR3-D2

• Project / Customer _____

• Item No. _____

• Model No. _____

Warranty

2 Year — Parts & Labor
5 Year — Compressor



Please visit our website for updated Energy Efficiency information

201 W. Artesia Blvd, Compton, CA 90220
T. (310) 323-6586, (800) 444-6285 F. (310) 323-7524

www.EVERESTref.com

DRAWERED UNDERCOUNTER REFRIGERATORS

Back Mounted Condensing Unit



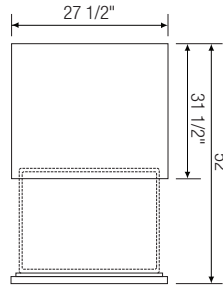
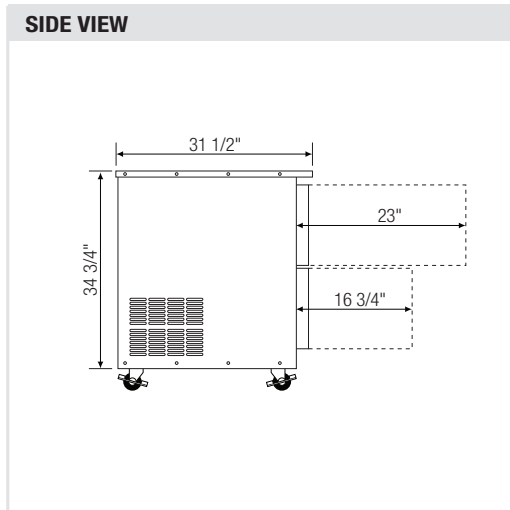
EVEREST REFRIGERATION

ETB – Series

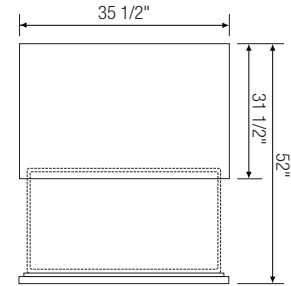
• ETBR1-D2 • ETBSR2-D2 • ETBR2-D4 • ETBWR2-D4 • ETBR3-D2

Dimensions

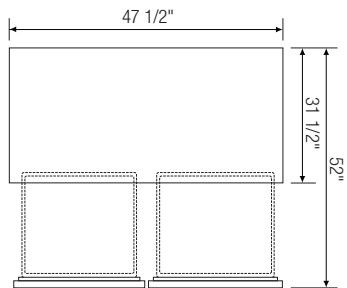
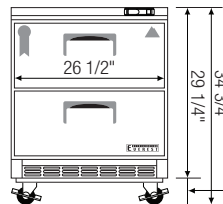
SIDE VIEW



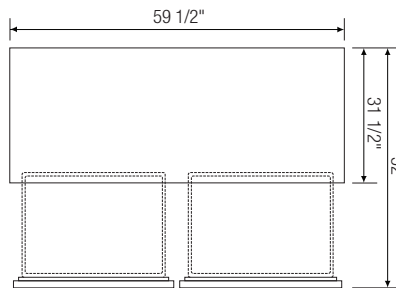
▲ ETBR1-D2



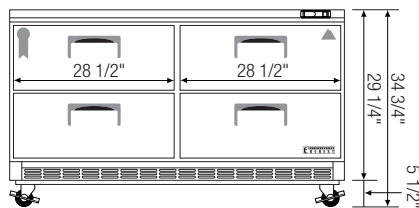
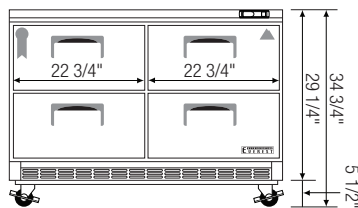
▲ ETBSR2-D2



▲ ETBR2-D4



▲ ETBWR2-D4



Model	Ref/ Fzr/ Dual	# of Doors & Drawers	Capacity (Cu.Ft.)	HP	Refrigerant	# of Shelves	# of Pans ^a	Power (V-Hz-Ph)	Amps	Crated Weight (LBS)	Exterior Dimensions (Inches)			* Height does not include 5" for caster. a Drawer pans are not included in the products. Ref = Refrigerator Fzr = Freezer Dual = Ref & Fzr Combo D = Door DR = Drawer
											L	D	H*	
ETBR1-D2	Ref	2(DR)	5.6	1/5	R-134A	N/A	1/2 x 4 1/4 x 2	115-60-1	4.10	205	27 1/2	31 1/2	29 1/4	
ETBSR2-D2	Ref	2(DR)	7.5	1/5	R-134A	N/A	1/2x4, 1/3 x1 1/4x2, 1/6 x1	115-60-1	4.40	246	35 1/2	31 1/2	29 1/4	
ETBR2-D4	Ref	4(DR)	10.3	1/5	R-134A	N/A	1/2x4, 1/3 x4 1/4x2, 1/6 x2	115-60-1	4.40	284	47 1/2	31 1/2	29 1/4	
ETBWR2-D4	Ref	4(DR)	15	1/4	R-134A	N/Av	1/2x4, 1/3 x8 1/4x2, 1/6 x4	115-60-1	4.70	330	59 1/2	31 1/2	29 1/4	
ETBR3-D2	Ref	1(D) 4(DR)	18.3	1/3	R-134A	2	1/2x2, 1/3 x8 1/4x1, 1/6 x4	115-60-1	5.20	363	71 1/2	31 1/2	29 1/4	

Specifications subject to change without notice.

www.EVERESTref.com

201 W. Artesia Blvd, Compton, CA 90220
T. (310) 323-6586, (800) 444-6285 F. (310) 323-7524