

# SOLID SLIDE LID GLASS & PLATE CHILLERS

EGC – Series • EGC37 • EGC50 • EGC65



▲ EGC37



▲ EGC50



▲ EGC65

## Cabinet Construction

Heavy duty stainless steel countertop, rail and lids, with textured and laminated black vinyl exterior. Galvanized steel interior. 1 3/4" thick high density foamed-in-place polyurethane insulation. Built-in caster thread receptacles for all units.

## Refrigeration System

- Side mounted condensing unit
- Oversized condenser and evaporator coils quickly achieve and maintain desired temperature
- Forced-air cooling with oversized evaporator fan motors provide balanced airflow throughout cabinet to ensure faster frosting of dry glasses and plates
- Removable side panel and slide-out condensing unit for convenient repair and maintenance
- Environmentally friendly CFC free R-134A and R-404A refrigerants
- Defrost heater controlled by electrical timer
- Copper tube and aluminum fin evaporator with anti-corrosive coating
- Energy efficient condensate drain pan assembly heated by high side copper tube
- Pre-wired and ready to plug, 115V/60Hz/1Ph, NEMA 5-15P

## Lids & Locks

- Heavy duty stainless steel, easy glide and removable lids
- 3/4" thick lids, foamed-in-place polyurethane insulation
- Ratchet lock to secure lids (standard)

## Lighting

- Shielded vertical LED interior lighting with on/off switch for energy efficiency, minimal heat generation and enhanced illumination (*available from 2017 models*)

## Shelving

- Two levels of epoxy coated wire shelves slide horizontally for easy storage of glasses and plates.

## Temperature Control

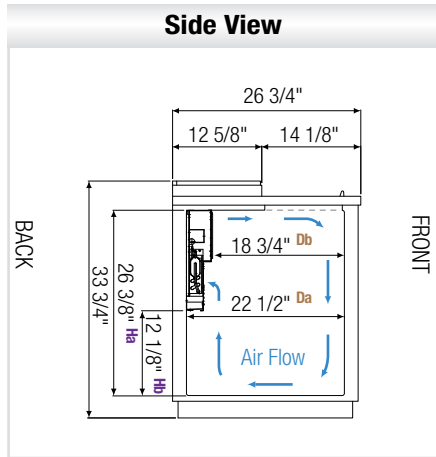
- Factory preset temperature, 0°F
- Temperature setting range from -5°F to 5°F
- Easy to set analog thermostat

## Option

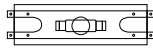
- 2 1/2" and 4" diameter casters (3 1/2" and 5" overall height)



## Dimensions



√ : Drain



T-Shaped PVC Drain Fittings w/ Movable Plug.

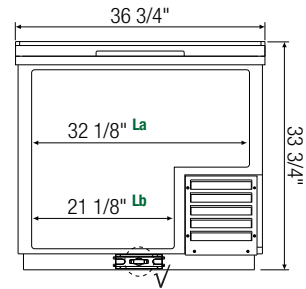
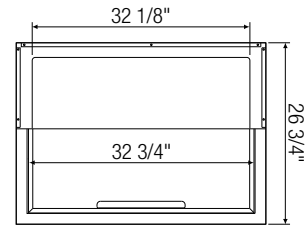
It is required to use a hose attachment w/ 3/4" inner diameter.



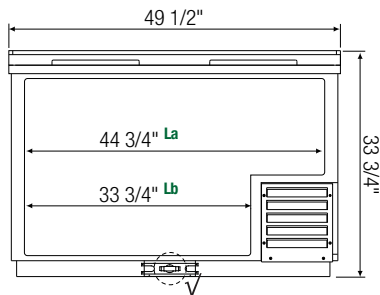
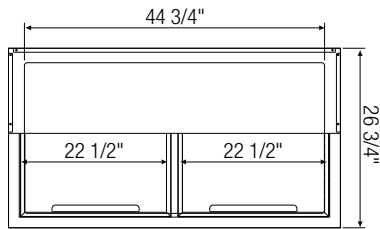
Lids come standard with ratchet locks.



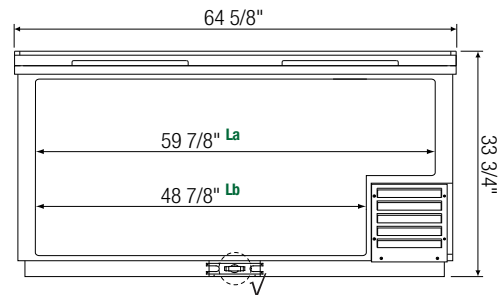
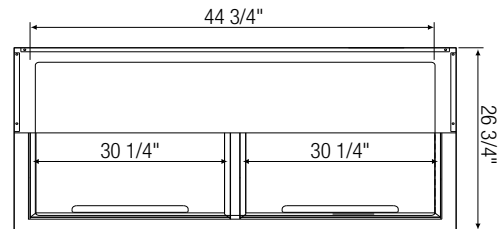
Equipped with 9 ft long NEMA 5-15P plug.



▲ EGC37



▲ EGC50



▲ EGC65

Model	Ref/ Frz/ Dual	# of Lids	Capacity (Cu.Ft.)	HP	BTU/HR <sup>†</sup>	Refrigerant	# of Shelves	Capacity (8" Mugs)	Power (V-Hz-Ph)	Amps	Crated Weight (LBS)	Exterior Dimensions (Inches)		
												L	D	H
EGC37	Frz	1	11.03	1/3	2,555	R-134A	3	160	115-60-1	4.83	215	36 3/4	26 3/4	33 3/4
EGC50	Frz	2	15.37	1/3+	2,681	R-404A	5	230	115-60-1	7.00	268	49 1/2	26 3/4	33 3/4
EGC65	Frz	2	20.56	1/3+	2,681	R-404A	7	290	115-60-1	7.00	319	64 5/8	26 3/4	33 3/4

<sup>†</sup> : Based on evaporating temperature of 23°F (-5°C) & condensing temperature of 131°F (55°C).

Frz = Freezer

La, Lb : Interior Length    Da, Db : Interior Depth    Ha, Hb : Interior Height

Specifications subject to change without notice.

Product dimensions are for general purposes and not absolute value. Product capacity(▶) is calculated based on standard industry figures. Slight variations may exist. If dimensions and capacity are critical, please contact Everest Refrigeration.



Please visit our website for updated Energy Efficiency information.