

OWL-TASTIC SLIPPER SOCKS



These slipper socks are knit from the top down with a wide garter cuff that is folded down with a weaved in Icord adorned with adorable pom poms. The leg features a cabled owl design that is very beginner friendly and fun to knit. Feel free to add buttons for the owl's eyes to make them stand out!

MATERIALS REQUIRED

YARN

[Cascade Eco](#) (1 skein)

NEEDLES AND ACCESSORIES

4 mm [Circular needles](#) for small circumference knitting

4 mm [Double Pointed needles](#)

[Cable needle](#)

[Tapestry needle](#)

[Slipper soles](#)

Buttons (optional)

GAUGE :

20 stitches = 4 inches; 10 cm

NOTE

These slipper socks are made to fit one size. The foot bed can be easily adjusted by knitting the foot shorter or longer. To make a wider or slimmer leg adjust the needle size accordingly.

INSTRUCTIONS

Cast on 40 stitches, place a marker and join to knit in the round.

Rnd 1: Knit all stitches.

Rnd 2: Purl all stitches.

Repeat rnds 1 and 2 until the cuff measures 5 inches; 12.5 cm ending with a purl side rnd.

Increase Rnd: K5, M1L; repeat to end. (8sts inc)
You will now have 48 stitches in total.

RIGHT LEG

Next Rnd: Knit all stitches.

Repeat this round for approximately 1.5 inches; 4 cm.

Stitch marker placement for owl design: K4, pm, k8, pm (8sts for first owl), k4, pm, k8, pm (8 sts for second owl).

Follow the written instructions or the Owl Chart within the markers that contain 8 stitches. ALL OTHER STITCHES WILL BE KNIT. Slip markers as you come to them.

Rnd 1: C4F, C4B

Rnd 2, 3 and 4: Knit all stitches.

Rnd 5: Repeat rnd 1.

Rnd 6 and 7: Knit all stitches.

Rnd 8: K2, p4, k2

Rnd 9: Knit all stitches.

Rnd 10 to 15: Repeat rnds 8 and 9 three more times.

Rnds 16, 17 and 18: Knit all stitches.

Repeat the owl patten one more time as in the knitted sample!

HEEL FLAP

Since the owls are on the outer portion of the leg the heel flap will be placed as follows:

Knit 36 stitches and place the NEXT 24 stitches that will be heel flap and now ready for a right side row on a separate needle. The

OWL-TASTIC SLIPPER SOCKS

remaining 24 stitches that are the instep can be placed on hold as the heel flap is worked back and forth.

Row 1 (RS): Slip 1 purlwise, knit 1; repeat to the end of the row.

Row 2 (WS): Slip 1 stitch purlwise, purl to the end of the row.

Repeat these 2 rows until the heel flap measures 2 inches; 5 cm.

TURNING THE HEEL

Row 1 (RS): K13, ssk, k1, turn your work.

Row 2 (WS): S11 purlwise, p4, p2tog, p1, turn your work.

Row 3: S11 purlwise, k5, ssk, k1 turn your work.

Row 4: S11 purlwise, p6, p2tog, turn your work.

Row 5: S11 purlwise, k7, ssk, k1 turn your work.

Row 6: S11 purlwise, p8, p2tog, turn your work.

Row 7: S11 purlwise, k9, ssk, k1, turn your work.

Row 8: S11 purlwise, p10, p2tog, turn your work.

Row 9: S11 purlwise, k11, ssk, k1, turn your work.

Row 10: S11 purlwise, p12, p2tog, turn your work.

GUSSET

Place the instep stitches back on needles and ready for a right side row:

Knit across the 14 stitches of the heel flap and pick up one stitch in every row along the side of the heel flap. You should have picked up between 12 – 14 stitches.

Knit across the instep and then pick up the same amount of stitches on the other side of the heel flap.

If working on double points, place the instep stitches on a separate needle, and the remaining stitches divided evenly between 2 needles. The right side needle will be needle 1, the instep will be needle 2 and the left side needle will be needle 3.

If working on a circular needle, place a marker on both sides of the instep stitches a different color than the beginning of round marker.

Dec Rnd: Knit to 3sts before the instep (this will be either 3 sts before the end of needle 1, or 3 sts before the marker), k2tog, k1, knit across the 24 instep stitches, k1, ssk, knit to beginning of round. (2sts dec)

Reg Rnd: Knit all stitches.

Repeat these 2 rounds until you are back to the original stitch count which will be 48.

FOOT

Knit all stitches of the foot in the round in Stockinette stitch until the length is 2 inches shorter than the overall desired length.

TOE

With the same set up as the decreases for the gusset, decrease for the toe as follows:

Dec Rnd: knit to 3 sts before the instep, k2tog, k2, ssk, knit to the last 3 stitches of the instep, k2tog, k2, ssk, knit to beginning of round. (4sts dec)

Reg Rnd: Knit all stitches.

Repeat these 2 rounds until you have 20 stitches remaining.

To close the toe, graft together using the Kitchener grafting method, 3 Needle Bind-off, or similar bind off of your choice.



LEFT LEG

The left slipper sock will be worked in the same manner as the slipper sock for the right leg with the exception of the stitch marker placement for the owl design as the design is on the outer portion of the leg. Set up the stitch markers for the owls as follows:

K24, pm, k8, pm (8sts for the first owl), pm, k4, pm, k8, pm (8sts for the second owl), knit the last 4 stitches to the beginning of round.

ICORD

On a double pointed needle, cast on 3sts and do not turn! Slide the 3 sts to the opposite end of the needle and knit the 3sts. Again, do

OWL-TASTIC SLIPPER SOCKS

not turn your work, slide the 3 stitches to the opposite end of the needle, the working yarn will be going across the back of the stitches as you knit them.

Continue in this manner until the lcord is long enough to tie in a bow around your leg where the cuff of the slipper will sit. Bind off but do not cut the tails.

POM POMS

To make the pom poms, wrap yarn around 3 or 4 fingers approximately 40-45 times. Carefully remove the yarn from your fingers and tie a strand of yarn tightly around the middle. Cut all the loops of both ends and start trimming the pom pom until you are happy with it.

FINISHING

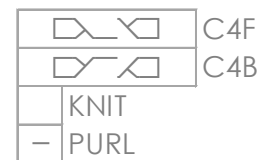
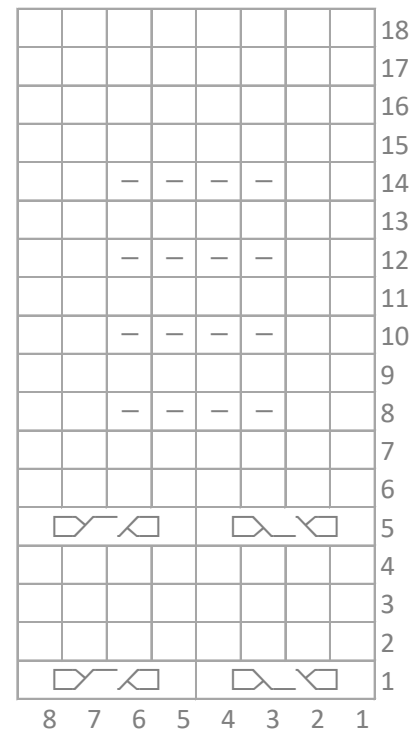
Block your slipper sock before starting the embellishments!
Fold down the Garter cuff of the slipper sock, thread the tail of the lcord with a tapestry needle, and weave the lcord in and out of 1 inch sections of the cuff. Do not go through 2 layers of the cuff, folding the cuff prior to weaving in the lcord will help you place it where you want it.

When the lcord is weaved in, tie the pom poms to the ends.
Sew on the buttons for the owl's eyes.

To attach the slipper soles use a cross stitch around the foot bed. To watch a tutorial on weaving in the lcord, making the pom poms and attaching the slipper soles check out this tutorial [HERE](#).

Have a HOOT wearing your OWL-TASTIC slipper socks!!

OWL CHART



ABBREVIATIONS

- K:** Knit
- P:** Purl
- St(s):** Stitch (s)
- Ssk:** Slip one as if to knit, Slip one as if to purl, knit the 2 stitches through the front loops.
- K2tog:** Knit 2 stitches together
- P2tog:** Purl 2 stitches together
- SL:** Slip
- Pm:** Place marker
- Dec:** decreased
- C4F:** Slip 2 stitches on the cable needle and hold in the front, knit 2 stitches and then knit the 2 stitches from the cable needle.
- C4B:** Slip 2 stitches on the cable needle and hold in the back, knit 2 stitches and then knit the 2 stitches from the cable needle.