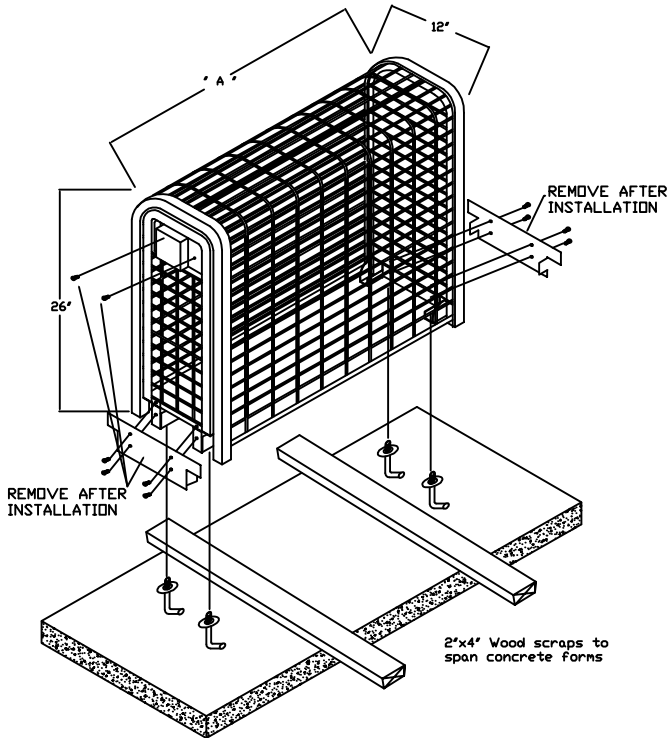
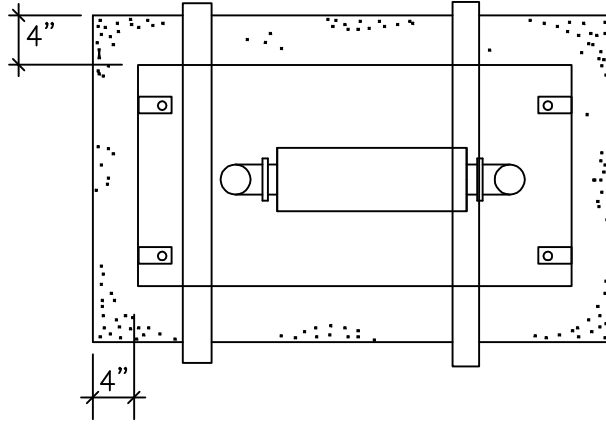


# GUARDIAN BACKFLOW CAGES INSTALLATION INSTRUCTIONS



**GC-24** 24"L x 12"W x 26"H Backflow Enclosure  
**GC-30** 30"L x 12"W x 26"H Backflow Enclosure



**Step 1:**  
 New concrete installation you will need a couple of 2"x4" for resting the enclosure across the forms while the concrete sets up.

**Step 2:**  
 Install anchor bolts on the bottom of enclosure so when concrete is leveled the enclosure will be ready to set into concrete.

**Step 3:**  
 Once concrete has cured CONTRACTOR must remove screws and base plates for enclosure to open. These screws and base plates may then be discarded.

