

Ewbank®

INSTRUCTION MANUAL

EW3001

MOTION 700W Bagless Pet Upright Vacuum Cleaner

Ewbank has a British heritage to be proud of. It's a household favourite and much loved brand that has been providing innovative cleaning solutions for 140 years.



Safety Instructions	3-5
Specification.....	6
Appliance Overview	7
Assembly Instructions.....	8
Operating Instructions	9
Cleaning & Maintenance.....	10-12
Troubleshooting & Damage Prevention.....	13
Fuse Replacement	14
Disposal of the Appliance.....	14
Warranty Terms & Conditions	15

**PLEASE READ ALL THE INSTRUCTIONS BEFORE USE
AND WHEN USING THE APPLIANCE, THE FOLLOWING
PRECAUTIONS MUST BE TAKEN:**

**WARNING! TO REDUCE THE RISK OF FIRE,
ELECTRIC SHOCK, OR INJURY:**

1. Do not leave the vacuum cleaner plugged in when not in use. Unplug the appliance from the mains power supply before servicing.
2. To reduce the risk of electric shock, do not use outdoors or on wet surfaces.
3. Only use as described in this manual, including attachments. Attachments used should only be that of the manufacturers.
4. Do not use the appliance if the cord or plug are damaged. If the vacuum cleaner is not working as it should be or has been dropped, damaged, left outdoors, or fallen into water, the vacuum cleaner must be serviced by a qualified engineer.
5. Do not pull or carry by the cord, use the cord as a handle, trap the cord, or pull the cord around sharp edges and corners. Do not run the vacuum cleaner over the cord and keep the cord away from heated surfaces.
6. Do not unplug the vacuum cleaner by pulling on the cord. To unplug, grasp the plug.
7. Do not handle the plug or the vacuum cleaner with wet hands.
8. Do not actively put any objects into any of the vacuum cleaners openings. Do not use if any of the openings are blocked. Keep free of dust, lint, hair and anything that may reduce airflow.
9. Keep hair, loose clothing, fingers and all parts of the body away from any openings and/or moving parts.
10. Turn all controls off before unplugging.
11. Take extra care when cleaning the stairs.
12. Do not use to pick up flammable or combustible liquids such as

- gasoline. Do not use in areas where this may be present.
13. Hold the plug when rewinding the cord. If this is not done, the plug may whip.
 14. Unplug before connecting the hose.
 15. Do not pick anything up that is burning or smoking such as cigarettes, matches or hot ashes.
 16. Do not use without the filter in place.
 17. If the cord is damaged, it must be replaced by the manufacturer, or a qualified engineer.
 18. This appliance is not intended for use by persons (including children) with reduced physical, sensory or mental capabilities, or lack of experience and knowledge. Only when they have been given supervision or instruction to use the appliance by a person responsible for their safety, can they then use it.
 19. Children should be supervised to ensure that they do not play with the appliance.
 20. The mains power supply should comply with the information on the appliance's rating label.
 21. Do not vacuum water or other liquids.
 22. Do not use or store the vacuum cleaner in humid environments.
 23. Do not use with an extension cable.
 24. Never dismantle any part of the appliance.
 25. When cleaning the stairs, ensure the vacuum cleaner is located below the user. Keep on the floor when possible.
 26. When retaining the packaging, store out of the reach of children.
 27. Do not store outdoors. Store out of the way with the power cord neatly wrapped up, to prevent accidents.
 28. When vacuum cleaning static electricity may be created. To prevent shocks, do not access any parts with your hand until the area is clear.
 29. Check the recommended cleaning instructions of your flooring before vacuum cleaning.
 30. Do not use the vacuum cleaner to vacuum powders such as flour and cement. It can damage, block or break the motor.

31. Do not use or store the vacuum cleaner in excessively high or low temperatures, outside of 0-40°C. Avoid the vacuum cleaner being in direct sunshine for a long period.
32. If the vacuum cleaner is broken do not disassemble it. This must be done by a qualified technician.

READ AND SAVE THESE INSTRUCTIONS

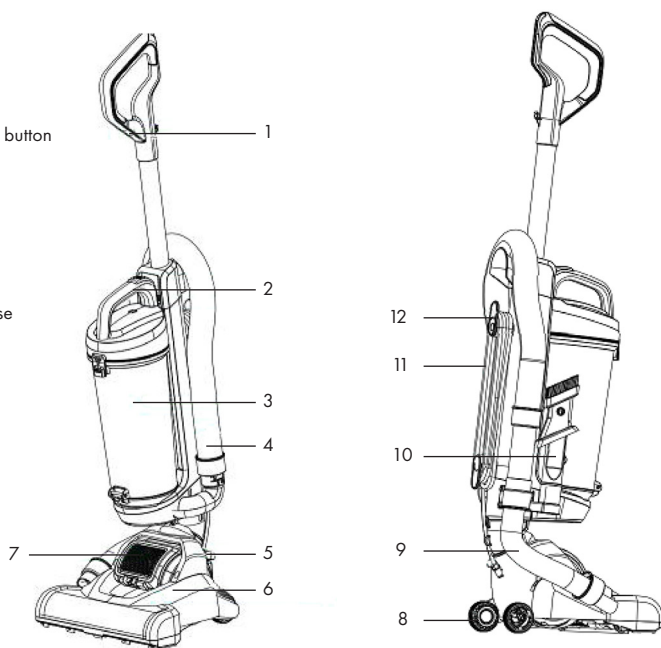
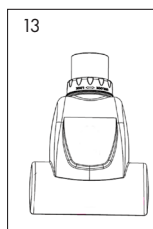
This vacuum cleaner is intended for household use only.

Read the safety and operating instructions through carefully before using the vacuum cleaner. This is the only way to ensure safe and reliable use of the device. If the appliance is sold or passed on, ensure it is equipped with this instruction manual. You will also need these operating instructions for ordering spare parts and accessories. Please keep this booklet in a safe place.

Product Dimensions (mm)	H:1060 x W:300 x D:310
Net Weight	5.1kg
Voltage	220-240V~
Frequency	50/60Hz
Wattage	700W
Cord Length	9.3m
Noise (MAX)	89dB
Dust Capacity	2L
Hose Length	2.4m

For further information about this product, including the power consumption in low power modes required by (EU) 2023/826, go to <https://www.ewbank.co.uk> and search for EW3001.

1. Handle
2. Dust container release button
3. Dust container
4. Extension hose
5. Power button
6. Brush assembly
7. Exhaust filter
8. Wheel(s)
9. Floor brush suction hose
10. 3-in-1 crevice tool
11. Power cord
12. Power cord storage
13. Turbo pet brush

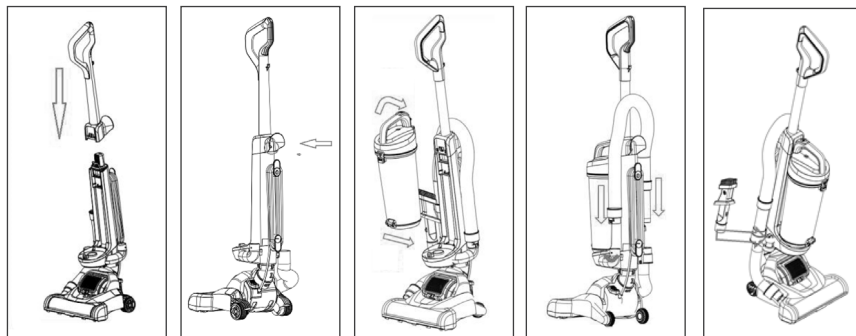


Getting Started

Remove the appliance from the box and remove the packaging from the appliance. Either store or dispose of the box and packaging safely and recycle where possible.

Before first use, please wipe all the parts with a soft, damp cloth and dry thoroughly.
Do not immerse the vacuum in any liquid.

Assembly



Step 1: Insert the handle into the body, and rotate the screw to secure.

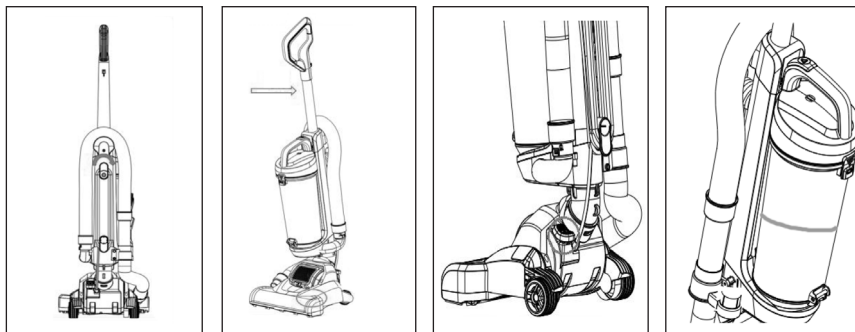
Step 2: Place the dust container onto the machine and push until it clicks into place.

Step 3: Insert one end of the hose into the floor brush and rotate clockwise to join. Then insert the other end into the body of the machine.

Step 4: Insert the crevice brush into the machine.

Note: Make sure all parts are firmly attached otherwise suction may be reduced.

Using the Vacuum



Step 1: Twist the quick release cord hook to release the power cord.

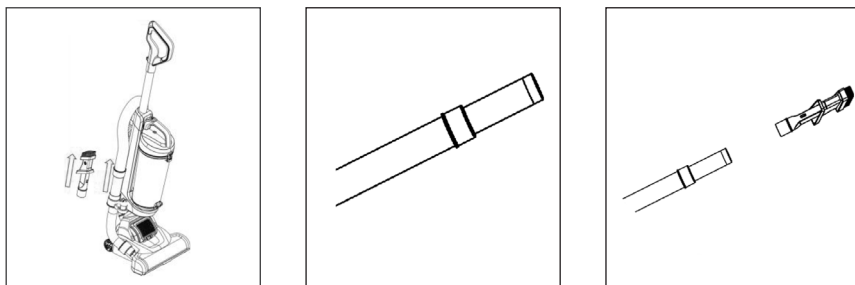
Step 2: Step on the floor brush cover and straighten the body of the machine.

Step 3: Plug in your machine and push ON/OFF button to switch on.

Warning: Do not over fill the dirt container to avoid clogging your filter.

Warning: Do not use the vacuum cleaner without the filter or dust container in place.

Using the 3-in-1 Crevice Tool



Step 1: Remove the hose and 3-in-1 crevice tool from the machine.

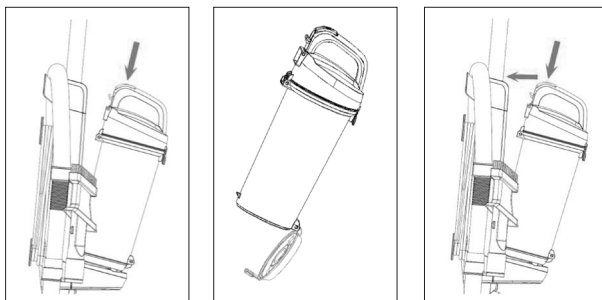
Step 2: The hose can be used like so.

Step 3: For further precision insert the 3-in-1 crevice tool.

Warning: The plug must be removed from the mains power supply before any maintenance or replacement. If the power cord is damaged, it should only be replaced by a maintenance centre or similarly qualified persons.

IMPORTANT: Empty the dust container after every use.

Emptying and Cleaning the Dust Container



Before emptying the dust container, cleaning the sponge or cleaning the dust filter, ensure the vacuum is either off or the plug is disconnected. It is advised that the cleaning is undertaken outdoors.

Step 1: Press dust container release button to remove the dust container.

Step 2: Hold the dust container over a bin and unclip the lock at the base, allowing the dust to fall out.

Step 3: Close the base of the dust container. Align the base back onto the machine and push so that it clicks back into place.

Filter Maintenance

It is very important to keep the filters clean to maintain maximum performance from the vacuum. Clean the filters thoroughly on a regular basis, we recommend at least once a month. We also recommend you replace the filters once a year.

Cleaning the Sponge

Keeping the sponge clear of dust and dirt will preserve the suction of the machine and will prolong its lifespan.

Step 1: Pull open the dust container by lifting the lock on the handle.



Step 2: Rotate the filter to remove.



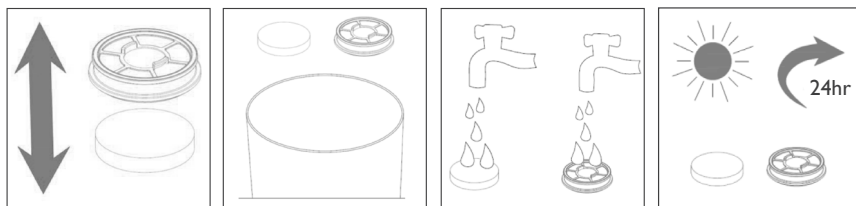
Step 3: Separate the filter so that you have the sponge and the HEPA.

Step 4: Gently knock the sponge repeatedly over a bin to release the dirt.

Step 5: Wash the sponge and HEPA under running water (40°C max).

Step 6: Leave to fully dry for at least 24 hours before placing back in the machine.

Warning: Do not use detergent to clean the sponge. The sponge must be air dried – never use external heat sources. Do not wring the sponge otherwise it can be damaged.



Cleaning The Dust Filter

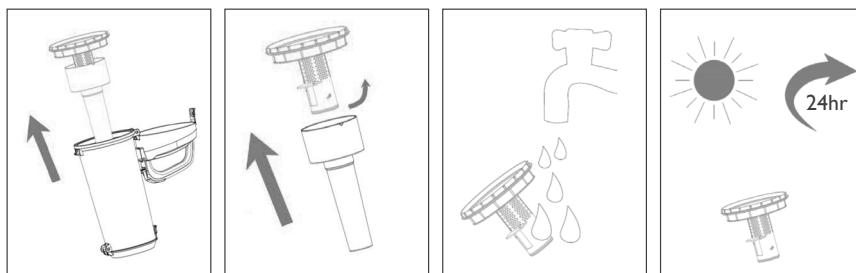
Step 1: Remove the centre of the dust container.

Step 2: Turn the dust filter, and remove.

Step 3: Wash the dust filter under running water.

Step 4: Leave to fully dry for at least 24 hours before placing back in the machine.

Warning: Do not use detergent to clean the dust filter. The dust filter must be air dried – never use external heat sources.

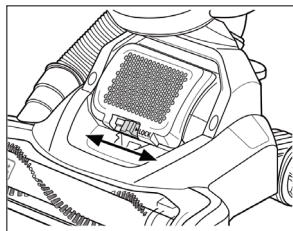


Cleaning the Exhaust Filter

Step 1: Locate and unlock the filter cover as shown. Slide left to unlock, right to lock.

Step 2: Remove the filter cover and filter. Wipe with a cloth over a bin, removing dirt and debris.

Step 3: Wash with water every 3 months and allow at least 24 hours to dry making sure it is completely dry before placing back into the machine.



Changing the Drive Belt

Check the drive belt carefully for wear, cuts and stressed areas. If the drive belt appears worn, you will need to replace it.

To remove the drive belt, read the instructions and follow the drawings below:

Ensure the machine is switched off and unplugged.

Step 1: Use a cross head screwdriver to remove the six screws at the base of the machine – this will release the cover. Make sure to put them safe to one side.

Grasp the old drive belt and remove from the motor shaft. Discard the old drive belt.

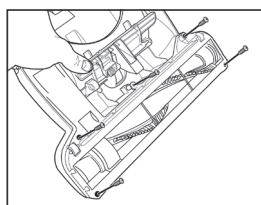
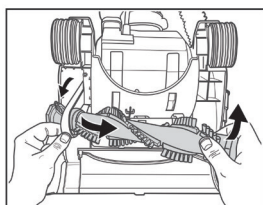
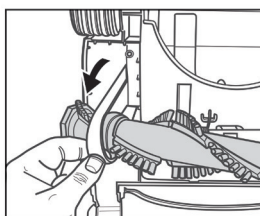
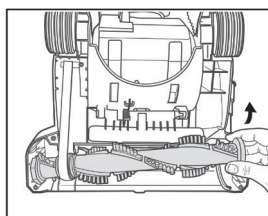
Step 2: Loop the new drive belt over the motor shaft. Stretch the other end over the floor brush in the space provided between the bristles.

Place ends of floor brush down into slots on sides as shown.

Step 3: Turn the floor brush by hand several times in the direction of the motor shaft.

If properly installed, drive belt will align itself on floor brush.

Step 4: Replace the brush cover and six screws.



If you experience difficulties with the appliance, please check the suggestions below before contacting customer services on 01473 271272:

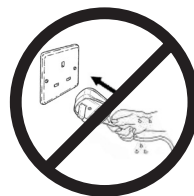
PROBLEM	POSSIBLE CAUSES	SOLUTIONS/TIPS
The suction is poor.	The hose is blocked.	Disconnect the attachments and remove the blockage.
	The dust container is almost full.	Empty the dust container following the instructions in the section entitled 'Emptying and Cleaning the Dirt Container'.
	The sponge and/or dust filter are blocked.	Clean the sponge and/or dust filter following the instructions in the section entitled 'Cleaning the Sponge' and/or 'Cleaning the Dust Filter'.

Switch off the vacuum cleaner immediately if the air intake, floor head, telescopic tube, lower hose or nozzle become blocked.

Remove any substance which appears to be causing the blockage.

Do not use the vacuum cleaner in the immediate vicinity of hot bodies such as a radiator.

Do not use the appliance if your hands are wet.



Remove all large objects from the floor before use to avoid any possible damage to the vacuum.



Fuse Replacement (Class II)

Remove the fuse cover with a small flat head screw driver. Take out the fuse and replace with a new fuse of the same Amp. Replace the fuse cover and push back into place.



Disposal Information

The European Directive 2012/19/EU on Waste Electrical and Electronic Equipment (WEEE), requires that old household electrical appliances must not be disposed of in normal unsorted municipal waste.

Old appliances must be collected separately in order to optimise the recovery and recycling of the materials they contain and reduce the impact on human health and the environment.

The crossed out "wheeled bin" symbol on the product reminds you of your obligation, that when you dispose of the appliance it must be separately collected. Consumers should contact their local authority or retailer for information concerning the correct disposal of their old appliance.



Ewbank Warranty Terms & Conditions

This product is guaranteed for a period of 2 years as standard from the date of purchase against mechanical and electrical defects.

To qualify for the warranty, the product must be used for domestic household use only and in accordance with the instructions in the user manual. Any misuse of the product will result in the warranty being void.

The warranty does not cover accidental damage, misuse, neglect, tampering or incorrect adjustment or installation.

The warranty will be rendered invalid if the product is resold, has had its serial number removed (or has an invalid serial number), or if an unauthorised person has carried out any repairs or alterations.

The warranty does not cover accessories or consumable parts that require replacement under normal use. This includes shelving, dials, filters, belts and trays etc.

In the unlikely event of a breakdown please refer to the Troubleshooting guide in your user manual and check all plugs, fuses and the electricity supply.

If you still require assistance please contact our Customer Service department on **01473 271 272** or write to us at the following address:

**Customer Service Department
Ewbank, 38 Bluestem Road,
Ipswich, Suffolk, IP3 9RR**

Please quote the Product Code and the PO Number on the Rating Label, located on the main body of the vacuum and give details of the exact fault. We will then decide whether to repair or replace the item.

Before we arrange the repair or replacement you will be required to return a copy of your proof of purchase. Please retain your original.

If an item is replaced within the agreed warranty period, the warranty for the replacement item will be calculated from the purchase date of the original.

In the event that the product is inspected and no fault is found or the product is not within the warranty period you will be charged for the repair and any carriage costs.



Your Guarantee

This product is covered by a 2 year guarantee.

This does not cover normal wear and tear or abuse.

For guarantee purposes, please retain your original receipt as proof of purchase.

This guarantee does not affect your statutory rights.

For spares, service and further information please contact;

Ewbank, 38 Bluestem Road, Ipswich, Suffolk, IP3 9RR

Castle Electrical Factors Ltd., Dundalk, A91 KA9R, IR

Tel: 01473 271 272

Disclaimer: Ewbank operate a policy of continual improvement and development.

We therefore reserve the right to change/alter the specification and appearance of our appliances without prior notice.

All diagrams and images shown in this manual are for illustration purposes only.