



CARPENTER ACE

New!

Carpenter ACE has more smart details than ever!

New!



Carpenter ACE is the name of Björnkläder's new, work-tough, and trendy collection for craftsmen who require a high standard of function, comfort, and design. Here you find a thorough collection with carpenter pants, jackets, sweatshirts, shirts, t-shirts, etc. The garments can be combined in many different ways to give you the best result for a good day at work, and Carpenter ACE, of course, has the right look even for your leisure time activities. In addition, many of the garments are Öko-tex certified, see our website for more information.

Tool pocket trousers, Carpenter ACE

Carpenter pants with many functional pockets and compartments for tools, keys, etc. There are tool pockets, double hammer loops, zippered leg pockets, cell phone -, linked -, bits -, ID card -, and pen pocket. A little pocket on the lower leg makes working on your knees easier. Many of the pockets are reinforced for durability. Reflective detail on the left leg gives a bit of visibility in the dark. A removable key band is in the right pocket. Pants are reinforced with polyester in vulnerable areas. Use approved long kneepads, order nr: 972 290 or 972 292. Fabric: Canvas, 100% cotton, 350g/m².

Size: 44 - 60, 92 - 124, 148 - 156

OrderNo: 675070846 Clay
675070869 Navy
675070899 Black



Björnkläder®

High-water trousers, Carpenter ACE

The same functional details as the carpenter pants. The leg bottom width of the highwater pant is drawstring adjustable. Use approved short kneepads, order nr: 972291 or 972293. Fabric: Canvas, 100% cotton, 350g/m².

Size: 44 - 62

OrderNo: 680070846 Clay
680070869 Navy
680070899 Black

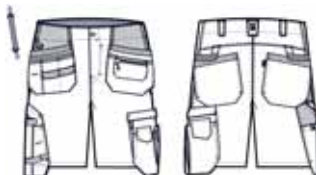


Shorts, Carpenter ACE

The same functional details as the carpenter pants but the shorts do not have pockets for kneepads. Fabric: Canvas, 100% cotton, 350g/m².

Size: 44 - 62

OrderNo: 040070846 Clay
040070869 Navy
040070899 Black





Cargo pants, Carpenter ACE

Cargo pants with practical leg pocket (with zipper), cell phone and pen pockets. A removable key band is in the right pocket. The fabric feels like cotton but is a cotton/poly blend that is strong and colourfast. The brushed backside gives a nice feel to the garment. Fabric: Canvas, 65% polyester/35% cotton, 310g/m².

Size: 44 - 60, 92 - 124, 146 - 156

OrderNo: 676073846 Clay
676073899 Black



Flanell shirt, Carpenter ACE

Björnklander' s new flannel shirt in a nice, brushed cotton quality. Practical chest pockets with a pen pocket on the left side. Fabric: Flannel, 100% cotton, 230g/m².

Size: S - 3XL

OrderNo: 964074069 Navy
964074099 Black



Flanell hood, Carpenter ACE

An updated version of the flannel shirt, now more trendy and cool! The flannel hooded shirt has a zipper closure and a Carpenter ACE transfer on the side that gives it a cool look. Practical chest pockets with a pen pocket on the left side. Single jersey inside hood. Fabric: Flannel, 100% cotton, 230g/m².

Size: S - 3XL

OrderNo: 967074069 Navy
967074099 Black





Soft shell jacket, Carpenter ACE

Water repellent jacket in a three-layer soft shell ripstop with good breathability. The ripstop creates an extra strong quality that prevents tears and minimizes damage from holes and is still soft and comfortable. An extra detail is the printed pattern on the fleece inside the jacket. Water tight zipper. On the inside is a pocket and cell phone pocket. There is a removable key band in the right pocket. Fabric: Softshell/ripstop, printed fleece inner, 100% polyester, 285g/m².

Size: XS - 3XL

OrderNo: 928076146 Clay
928076199 Black



Bonded fleece jacket, Carpenter ACE

Wind and water resistant fleece jacket. The material is a three-layer fleece with a black mesh on the inside. Reinforced with polyamide. Jacket has many functional pockets including a practical inner pocket. There is a removable key band in the right pocket. Material: Laminated fleece, 100% polyester, 325g/m². Quality has a water resistance of 5000mm/H₂O and breathability of 2000g/m²/24h. The jacket does not have taped seams.

Size: XS - 3XL

OrderNo: 930079746 Clay
930079769 Navy
930079799 Black



Sweatjacket with hood, Carpenter ACE

A hooded jacket with a designed transfer on the left side, moulded inner for a comfortable feel and vulnerable areas reinforced with canvas. On the inside there is an inner pocket and cell phone pocket. There is a removable key band in the right pocket. The garment is pre-washed which results in a softer feel and reduced risk of shrinkage. Differences in shading may occur. Fabric: Tricot, 80% cotton / 20% Polyester, 340g/m².

Size: XS - 3XL

OrderNo: 929079846 Clay
929079869 Navy
929079899 Black



Polo shirt, Carpenter ACE



Polo shirt in the most beautiful cotton. The garment is pre-washed which results in a softer feel and reduced risk of shrinkage. Differences in shading may occur. Fabric: Tricot, 100% cotton, 230g/m².

Size: XS - 4XL

OrderNo: 060071146 Clay
 060071167 Fog blue
 060071169 Navy
 060071199 Black



T-shirt with print, Carpenter ACE

T-shirt with a designed print on the left side. The garment is pre-washed which results in a softer feel and reduced risk of shrinkage. Differences in shading may occur. Fabric: Tricot/Single jersey, 100% cotton, 230g/m².

Size: XS - 4XL

OrderNo: 062179501 White
 062179520 Orange
 062179546 Clay
 062179567 Fog blue
 062179569 Navy
 062179599 Black



T-shirt, Carpenter ACE

The same t-shirt as above, but without the designed transfer. Fabric: Tricot/Single jersey, 100% cotton, 230g/m².

Size: XS - 4XL

OrderNo: 062079501 White
 062079546 Clay
 062079567 Fog blue
 062079569 Navy
 062079599 Black





Beanie, Carpenter ACE

Rib-stitched beanie in nice cotton. Fabric: 100% cotton. Black.

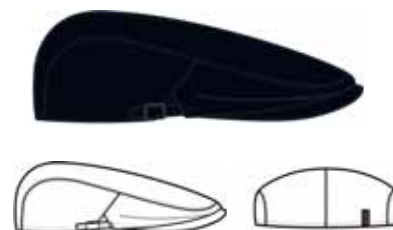
OrderNo: 096070099



Cap, Carpenter ACE

Trendy cap with a cool look. Fabric: Canvas, 100% cotton, 350g/m². Black.

OrderNo: 097070099



Belt, Carpenter ACE

Belt in cotton with ACE print, on the backside of the buckle is a bottle opener. Fabric: 100% cotton, buckle in metal. Length 130cm. Black with print.

OrderNo: 080070099



Jubilee Carpenter!



Björnkläder®



Tool pocket trousers, Jubilee Carpenter

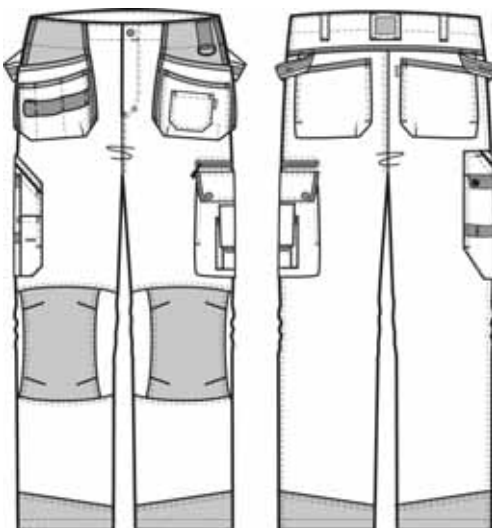
The trousers have a modern fit. To increase garment life, we have reinforcements on stress points. Useful side pockets, D-rings and smart solutions for your keys. An ID-card holder is placed under one of the tool pockets. The ruler pocket is re-designed and an extra leg pocket with zipper has been added. The knee pockets are higher and improved. Cotton. Weight: 350 g/m².

Size: 44 - 60 (Black: 44 - 64), 96 - 120, 146 - 156

- OrderNo: 665000436 Grey
- 665000499 Black
- 665000469 Navy
- 665000456 Green
- 665000442 Khaki

Everybody likes them! The best looking and practical trousers on the market!?

Use fitting long knee pads
order no: 972 290 and 972 292!



Fabric description

Function: Soft, comfortable, with good durability and resistance against wear and tear. *Construction:* Twill *Composition:* 100% cotton *Weight:* 350g/m²

Reinforcement fabric

Function: Extremely durable *Construction:* Two-shaft binding *Composition:* 100% polyamide *Weight:* 220g/m²

Big success!

Jubilee Carpenter, also for women!



Björnkläder®



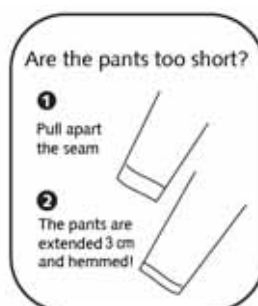
Women's Jubilee Carpenter trousers

The trousers have been designed to fit women! They have a double hem so you can extend the length by opening a seam, the longer leg is pre-hemmed and ready wear. We have reinforcements on stress points. Useful side pockets, D-rings and smart solutions for your keys. An ID-card holder is placed under one of the tool pockets. The ruler pocket is re-designed and an extra leg pocket with zipper has been added. The knee pockets have also been totally re-designed. Cotton. Weight: 350 g/m².

Size: Black: 34 - 50, Cerise: 36 - 48

OrderNo: 640000423 Cerise
640000499 Black

Use fitting long knee pads
order no: 972 290 and 972 292!



**Trousers adjusted
to female curves!**

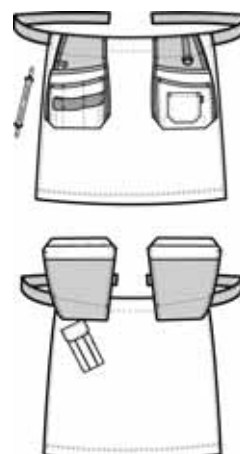
A practical apron to hold your tools and other items!



Apron, Jubilee Carpenter

Only your imagination sets the limit to this apron's use! Everyone who needs to carry tools such as screwdrivers, rulers and accessories such as nails, needles, glasses, pens, mobile phones, tape etc. has a need for this garment! One size - fits all!

OrderNo: 904070423 Cerise
904070499 Black





Use fitting short knee pads
order no: 972 291 and 972 293!



With
id-card
pocket!

High Water trousers, Jubilee-Carpenter

Shorter legs make a difference on hot days! Especially during spring and summer when they cool you down. On places where wear and tear is extra tough, we have put reinforcements to prolong the life span. The core material is steady 350-gram cotton. You find id-card pocket, toolpockets, backpacks, ruler pocket and a leg pocket with mobile phone pocket. We also have a zipped leg pocket where you can place your wallet during sunny days when you do not wear a jacket. Your knees are of course protected when you make use of the pockets for the kneepads.

Size: 44 - 60

OrderNo: 670070469 Navy blue
670070499 Black

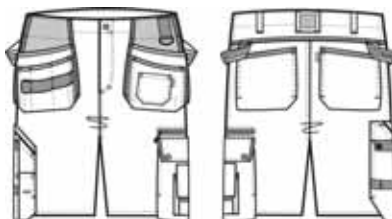


Carpenter Jubilee shorts

The shorts have a new modern fit and to increase garment life, we have reinforcements on stress points. Usefull side pockets, D-rings and smart solutions for your keys. An ID-card holder is placed under one of the tool pockets. The ruler pocket is re-designed and an extra leg pocket with zipper has been added. Weight: 350 g/m².

Size: 44 - 60

OrderNo: 033000436 Grey
033000469 Navy
033000499 Black



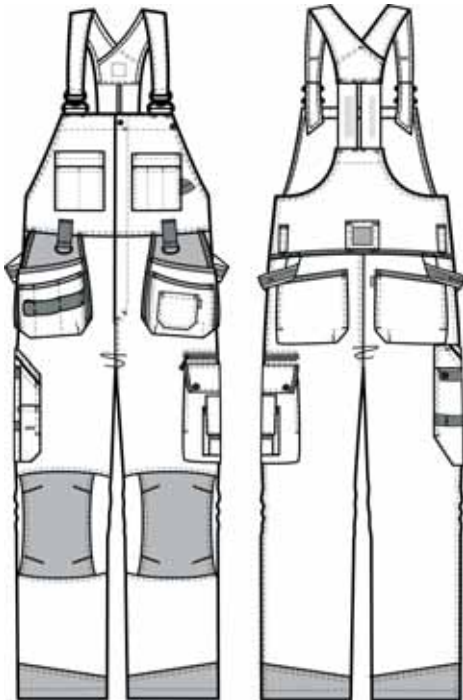
Bib dungarees, Jubilee Carpenter

Modern fit, cotton with strong reinforcements. Plenty of pockets, tool pockets, back pockets, side and ruler pockets. Mobile phone pocket and a security pocket with zipper for your wallet or similar. Key holder and D-ring. ID-card holder. Knee pockets of the new higher CE standard. 100% cotton, weight: 350 g/m².

Size: 46 - 60, 100 - 120, 148 - 154

OrderNo: 156000436 Grey
 156000469 Navy
 156000499 Black

Use fitting long knee pads
 order no: 972 290 and 972 292!



Kneepads of rubber

Strong knee pads in black rubber. The knee pads are available in two lengths. Which length is suitable is described beside the trousers. The long knee pad, art. no. 972 290 is together with approved reinforcements knee pockets approved according to EN 14404 and EU directive 89/686/CE. This means that they have a better penetration protection against items up to 1 cm. The life span is estimated to 1 year for normal usage. The knee pads form around your knee, which means you will stand stable also on your knees. Rubber knee pads last longer than other materials. If you would forget them when you wash your trousers, they should handle to be washed in 85 degrees, but we give no guarantees on that.

OrderNo: 972290 290x147x16 mm
 972291 240x147x16 mm



Kneepads of polyethene

Strong knee pads in grey polyethene. The knee pads are available in two lengths. Which length is suitable is described beside the trousers. The long knee pad, art. no. 972 292 is together with approved reinforcements knee pockets approved according to EN 14404 and EU directive 89/686/CE. This means that they have a better penetration protection against items up to 1 cm. The life span is estimated to 1 year for normal usage. The knee pads form around your knee, which means you will stand stable also on your knees.

OrderNo: 972292 290x147x20 mm
 972293 240x147x20 mm



Toolpocket vest, Jubilee Carpenter

A new developed toolpocket vest that makes carrying easier! We have given the shoulder part a soft lining and a new cut that spreads the weight better. Straighten the stretch belt around your waist and the weight moves to your hips. Comfortable. Four reinforced toolpockets, two breast pockets, bits pocket and a leaning mobile phone pocket makes it easier to answer the phone. A net across the back and upper front gives you ventilation on hot days and during hard work. Cotton 350 g/m². Black.

Size: S - 3XL

OrderNo: 447070499



Jacket, Jubileums-Carpenter

Rough jacket in 100% cotton, new design with a better fit. Pre-bent arms gives you a good work position and maneuverability. Arms are also reinforced where needed. Adjustable waist. Two large breast pockets, two side pockets, inner pocket and mobile phone pocket. There is also an ID-card holder, a D-ring and a key-holder. 350g/m².

Size: XS - 3XL

OrderNo: 722070469 Navy blue
722070499 Black



Jubilee Carpenter sweat jacket

A very smooth sweat jacket with good maneuverability and fit. We chose a sweat material in strong cotton/ polyester to achieve this smoothness and reinforced it with polyamide to handle the rougher conditions of a working environment. All the pockets you need and a smart holder for ID cards. A smart look is included in the price! 80% cotton/20% polyester. 340g/m².

Size: XS - 3XL

OrderNo: 920009899 Black/grey
920009869 Navy/grey



Jubilee Carpenter Fleece Vest

A vest which can be worn all year. The fleece gives you warmth and transports moist away. The vest has been reinforced with polyamide, has a pocket with zipper, a mobile phone pocket and a smart key-holder. Colour: Black/grey. 100% polyester, 320g/m².

Size: XS - 3XL

OrderNo: 454009899



Björnkläder®

Our classic Carpenter collection of 100% cotton!

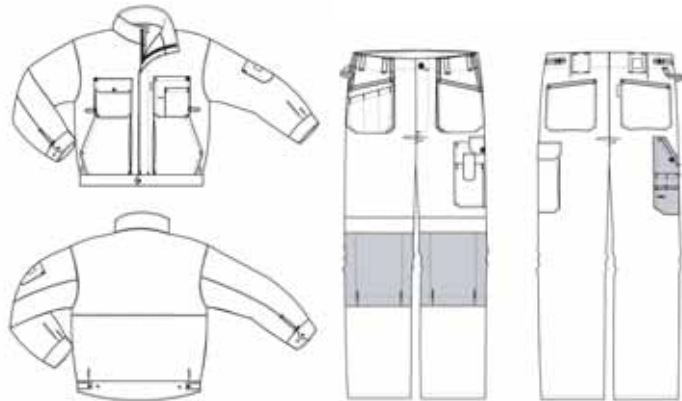


Fabric description

Function: Soft, comfortable, with good durability and resistance against wear and tear. *Construction:* Twill *Composition:* 100% cotton *Weight:* 350g/m²

Reinforcement fabric

Function: Extremely durable *Construction:* Two-shaft binding *Composition:* 100% polyamide *Weight:* 220g/m²



Jacket

100% cotton.

Size: S - 2XL

OrderNo: 721000436 Grey
721000465 Royal blue
721000469 Navy

Tool pocket trousers

Our classic tool pocket trousers of 100% cotton.

Size: 44 - 60 (Navy: 44 - 64), 96 - 120, 146 - 156

OrderNo: 206700436 Grey
206700465 Royal blue
206700469 Navy

Use fitting short knee pads order no: 972 291 and 972 293!

Strong reinforcements!



Vest dungarees

100% cotton. Colour: Royal blue

Size: 46 - 60, 148 - 154

OrderNo: 174700465

Use fitting short knee pads order
no: 972 291 and 972 293!



Bib dungarees

Classic bib dungarees in 100% cotton.

Size: 46 - 60, 100 - 120, 148 - 154

OrderNo: 150700436 Grey
150700465 Royal blue
150700469 Navy



Vest

100% cotton.

Size: S - 2XL

OrderNo: 481700436 Grey
481700465 Royal blue
481700469 Navy

Björnkläder®

100% polyester with brushed inside. Durable and comfortable!



Tool pocket trousers

With tool pockets. 100% polyester.

Size: 46 - 60, 100 - 120, 146 - 154

OrderNo: 206705264 Medium blue
206705299 Black

Use fitting short knee pads order
no: 972 291 and 972 293!



Jacket

100% polyester.

Size: S - 2XL

OrderNo: 721005264 Medium blue
721005299 Black

Fabric description

A favourite among customers who put stringent demands on strength. The 100% polyester fabric is brushed on the inside to make it more comfortable. Weight 260 g/m². Easy to wash. Keeps shape, colour, and finish for a long time.



Björnkläder®

With Niche you are always well dressed!

Look good on the job with Niche!

New!
Now also in black!



Toolpocket trousers

Toolpocket trousers, broad loops hold the trousers in place even when the pockets are heavily loaded. Reinforced toolpockets with different sections for small tools and a pocket for the tape measure. Pouch pockets with flaps at the back. Leg pockets, ruler pocket and mobile phone pocket. Reinforcements on the knees. You put the kneepads into the knee pockets from inside to keep them better in place. ID-card pocket.

Size: 44 - 60, 96 - 120, 146 - 156

OrderNo: 213172438 Dark grey/black
213172441 Light khaki/dark grey
213172469 Navy/black
213172499 Black/black

Use fitting long knee pads
order no: 972 290 and 972 292!



Zip-off trousers

Trousers, zip-off. Adjust the trousers according to the weather. Zip them off and the trousers turn into shorts. Removable toolpockets. ID-card pocket, side pockets and pouch pockets with flap on the back. Leg pocket, ruler pocket and mobile phone pocket. These trousers will become your best friends, even on hot days.

Size: 44 - 60, 96 - 120, 146 - 156

OrderNo: 661002438 Dark grey/black
661002441 Light khaki/dark grey
661002469 Navy/black

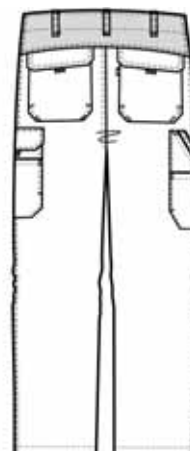
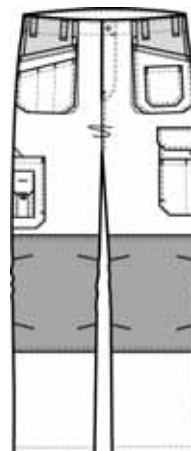
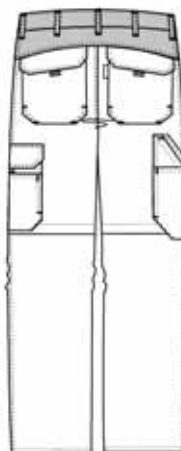


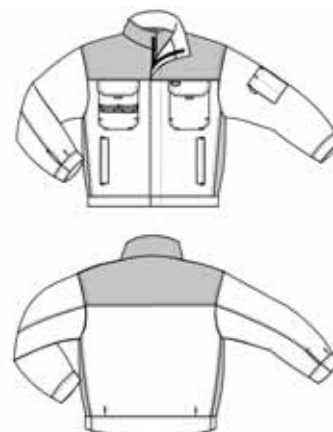
Fabric description
The Niche collection is made of 65% polyester/35% cotton. Weight 245 g/m². For your comfort the fabric has a brushed inside. It is strong, has a good colourfastness and minimal shrinkage.



Zip-off trousers

Toolpocket trousers





Jacket

Jacket with a high, protective collar, pouch breast pockets, side pockets, inner pocket with zipper. Inner mobile phone pocket, loops for keeping the handsfree cable in place. Extended back protects against wind.

Size: XS - 3XL

OrderNo: 709002438 Dark grey/black
709002441 Light khaki/dark grey
709002469 Navy/black

Jacket



Piqué shirt with contrasting stripe

100% cotton, breast pocket. 235 g/m².

Size: S - 3XL

OrderNo: 238438 Dark grey/black
238441 Light khaki/ dark grey
238468 Blue/black
238469 Navy/black



Piqué shirt

Björnkläder®

