



# INSTALLATION INSTRUCTIONS FRONT PLOW MOUNT KIT

Part Number: 95160/98678

Application: 2015+ Polaris 570

## GENERAL SAFETY PRECAUTIONS

**Your safety, and the safety of others, is very important. To help you make informed decisions about safety, we have provided installation and operating instructions and other information on labels and in this guide. This information alerts you to potential hazards that could hurt you or others. It is not possible to warn you about all potential hazards associated with this product, you must use your own good judgment.**

**CARELESS INSTALLATION AND OPERATION CAN RESULT IN SERIOUS INJURY OR EQUIPMENT DAMAGE. READ AND UNDERSTAND ALL SAFETY PRECAUTIONS AND OPERATING INSTRUCTIONS BEFORE INSTALLING AND OPERATING THIS PRODUCT.**

**This guide identifies potential hazards and has important safety messages that help you and others avoid personal injury or death. WARNING and CAUTION are signal words that identify the level of hazard. These signal words mean: **▲WARNING** signals a hazard that could cause serious injury or death, if you do not follow recommendations. **▲CAUTION** signals a hazard that may cause minor to moderate injury, if you do not follow recommendations. This guide uses NOTICE to call attention to important mechanical information, and Note: to emphasize general information worthy of special attention.**

### ▲ WARNING

#### IMPACT AND MOVING PARTS ENTANGLEMENT HAZARD

**Failure to observe these instructions could lead to severe injury or death**

- Always Read the Plow Operator's Manual, the Winch Operator's Manual and all warning labels before operating.
- Always use extreme caution when drilling on any vehicle. Make sure that all fuel lines, brake lines, electrical wires, and other objects are not punctured or damaged when/if drilling on the vehicle. Thoroughly inspect the area to be drilled (on both sides of material) prior to drilling, and relocate any objects that may be damaged. Failure to inspect the area to be drilled may result in vehicle damage, electrical shock, fire or personal injury.
- Always wear safety glasses when installing this kit. A drilling operation will cause flying metal chips. Flying chips can cause eye injury.
- Always use extreme caution when cutting and trimming during fitting.
- Always remove jewelry and wear eye protection.
- Never lean over battery while making connections.
- Never route electrical cables:
  - o Across any sharp edges.
  - o Through or near moving parts.
  - o Near parts that become hot.
- Always insulate and protect all exposed wiring and electrical terminals.
- Always install terminal boots as directed in installation instructions.
- Always use appropriate and adequate care in lifting components into place.
- Always insure components will remain secure during installation and operation.
- Always tighten all nuts and bolts securely, per the installation instructions.
- Always operate the vehicle at a walking speed with the blade installed. Never exceed 5 mph (8 km/h), even with blade up.
- Always plow cautiously, impact with hidden or stationary object may cause the vehicle to stop suddenly or go out of control.
- Never operate the vehicle on slopes greater than 10 degrees with the plow installed.
- Never stand or ride on the plow.
- Always stay clear of moving parts and joints. Always keep others away when operating or adjusting plow.
- Always perform regular inspections and maintenance on the plow mechanism, fasteners, cable and related hardware.
- Always replace all worn or damaged parts before operating.
- Never operate this WARN product with damaged or missing parts.
- Always drive slowly over bumpy and rough terrain. Driving at speeds that cause the plow to bounce while in the up position can cause the winch to back-drive, causing the plow to work its way down. This may result in the plow impacting a stationary object and cause damage to the vehicle and operator injury or death.
- Always drive at speeds such that the plow does not bounce and be aware of the plow position while driving at all times.
- Always be aware that the purpose of the j-bolt is to break the connection between the plow and the winch, to prevent serious damage to the ATV if the plow is raised too high. The plow blade will drop suddenly if the j-bolt breaks, so always be sure there are no bystanders when you raise and lower the plow.
- Never raise the top of the plow above the headlights of the ATV, as it may damage the vehicle and plow.
- Always replace a deformed or broken j-bolt with the spare j-bolt included in the kit.

Read installation and operating instructions thoroughly.

WARN INDUSTRIES, INC. 12900 S.E. Capps Road,  
Clackamas, OR USA 97015-8903, 1-503-722-1200, FAX: 1-503-722-3000  
Customer Service: 1-800-543-9276  
Dealer Locator Service: 1-800-910-1122  
International Fax: 1-503-722-3005

## **⚠ CAUTION**

### **MOVING PARTS ENTANGLEMENT HAZARD**

Failure to observe these instructions could lead to minor or moderate injury

- Always take time to fully read and understand the installation and Operations Guide included with this product.
- Never operate this product if you are under 16 years of age.
- Never operate this product when under the influence of drugs, alcohol or medications.

Read installation and operating instructions thoroughly.

## **NOTICE**

### **EQUIPMENT DAMAGE**

- Always refer to the Installation and Specification Guide, supplied in the winch kit, for all wiring schematics and specific details on how to wire this WARN product to your vehicle.
- Always put the end of the actuator cable through the slot in the Termination Bracket. Terminating the cable through any other hole in the bracket will cause the bracket to not function properly and will drastically reduce the life of the actuator cable.

Read installation and operating instructions thoroughly.

## **TABLE OF CONTENTS**

Tools Required.....	page 2
Torque Specifications.....	page 2
Parts List.....	page 3
Installation.....	page 4-9
Maintenance/Care.....	page 9

## **TOOLS REQUIRED**

- 1/2 Socket
- 1/4" drive socket wrench
- 13 mm socket
- 13 mm wrench
- 1/4" drive , 10 mm deep socket
- 5mm allen
- Wire cutters

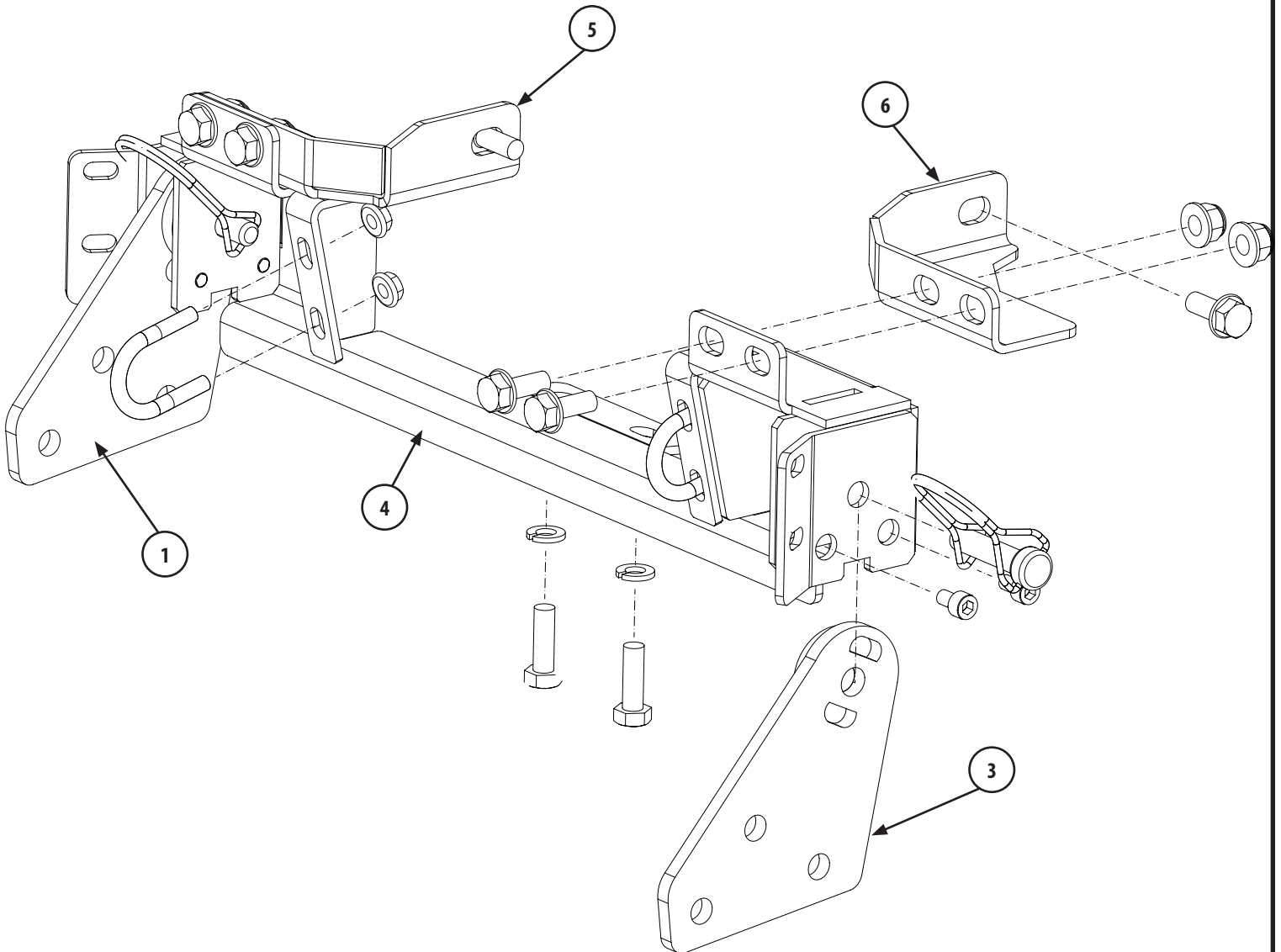
## **TORQUE SPECIFICATIONS**

Please use the recommended torque specifications when assembling this product unless otherwise specified in the instructions.

FASTENER SIZE	FASTENER TORQUE	
	lb-ft	(N.m)
1/4"	8	(11)
5/16"	17	(23)
3/8"	30	(40)
7/16"	48	(66)
1/2"	74	(100)
9/16"	106	(144)
5/8"	148	(200)
3/4"	269	(364)
M4	(2)	3
M5	(4.5)	6
M6	(7.5)	10
M8	(18)	25
M10	(37)	50

# PARTS LIST

Item	Part Number	Qty	Description
1	79226	1	Right Hand Front Plow Mount Bracket
2	95167	1	Hardware Kit ( <i>not shown</i> )
3	79225	1	Left Hand Front Plow Mount Bracket
4	95161	1	Front Plow Mount
5	95158	1	Right Hand Support Bracket
6	95159	1	Left Hand Support Bracket



# INSTALLATION INSTRUCTIONS

1. Using a T27 Torx remove the four torx bolts on the front of the vehicle. Repeat for other side.



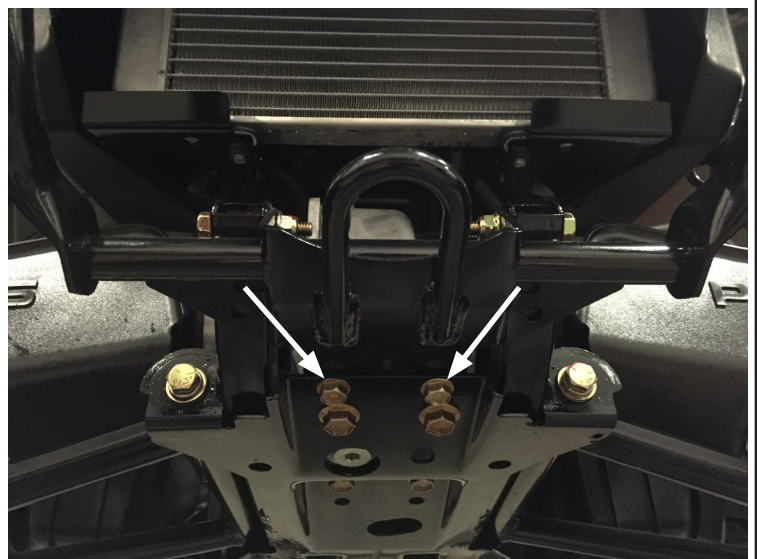
*Figure 1*

2. Remove the lower front plastic. Repeat for other side.



*Figure 2*

3. Using a 1/2" socket, remove the two 5/16" flange head bolts below tow hook.



*Figure 3*

## INSTALLATION INSTRUCTIONS

4. Install the front plow mount bracket using two 5/16" bolts and washers provided in kit. Do not tighten at this time.

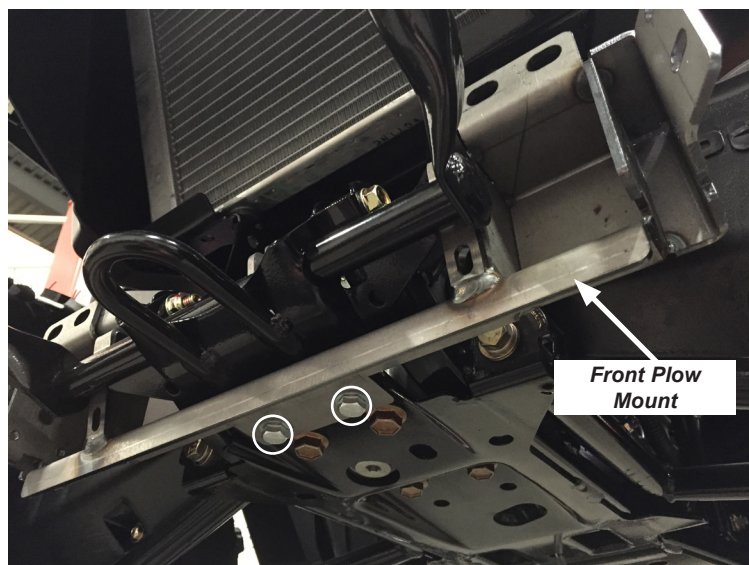


Figure 4

5. Install two M6 u-bolts with four M6 lock nuts provided in hardware kit. Do not tighten at this time.

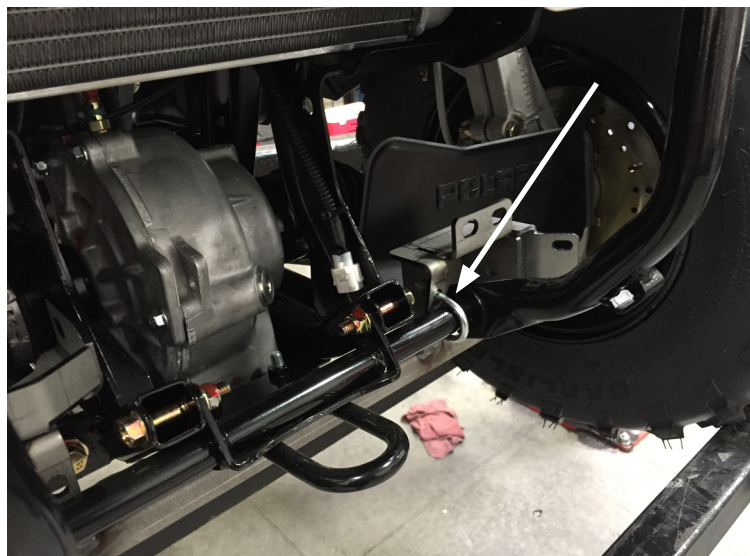


Figure 5

6. Remove the zip tie fastening wire harness to the vehicle frame.

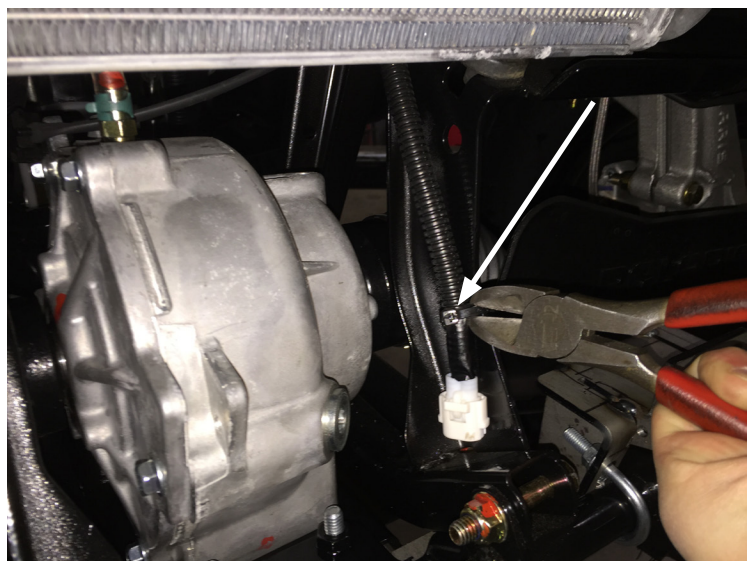


Figure 6

7. Install winch mount using only the top two M8 flange head bolts provided.

Relocate wire harness in an appropriate location.

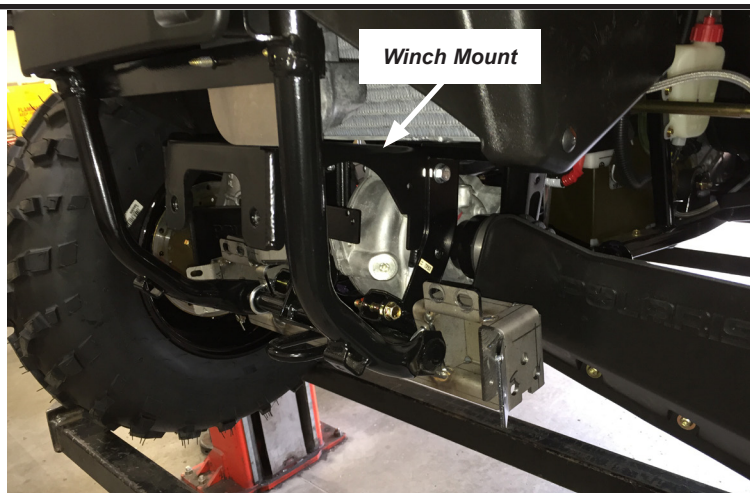


Figure 7

8. Place the right and left support brackets into place and bolt into location using three M8 flange head bolts and two lock nuts on each side.

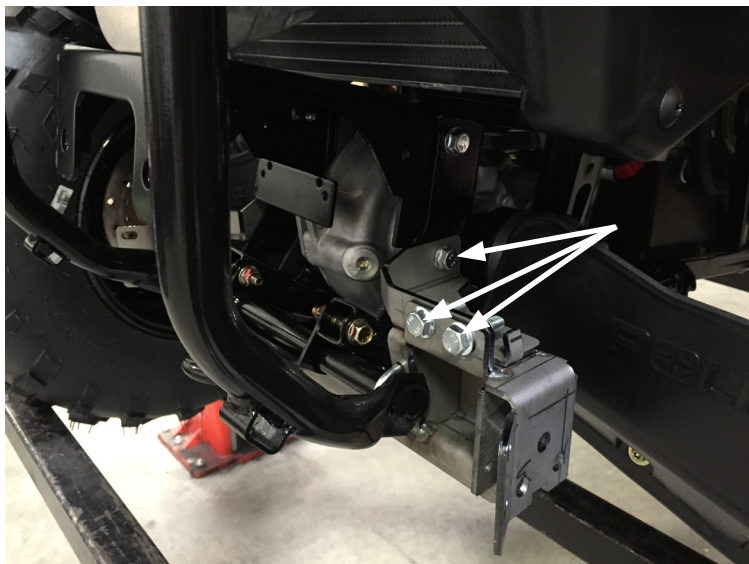


Figure 8

9. At this point, torque all hardware to the specified ratings on page 2.

**NOTE:** A 1/4" drive socket wrench and a deep 10mm socket may need to be used to access and torque the M6 lock-nuts on the u-bolts. See Figure 9 for reference.



Figure 9

10. Reinstall lower front plastic re-using the torx screws removed in step 1.



Figure 10

11. Attach left and right puck flange to the plow push tube assembly as shown. Flanges should be mounted internally with pucks facing inward.



Figure 11

12. Install two M6 socket head bolts to front plow mount as shown.

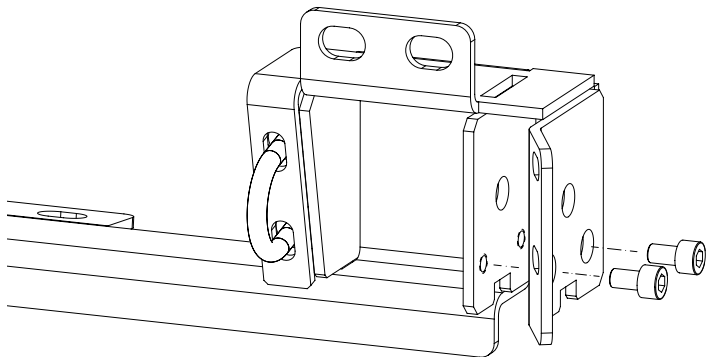


Figure 12

13. Slide push tube assembly into front plow mount pockets.



Figure 13

14. Insert the 3/8" retaining pins (each side).



Figure 14

## MAINTENANCE / CARE

1. Inspect all parts on the winch, winch mount, and related hardware prior to each use. Replace all hardware that appears rusted or deformed.
2. Inspect all nuts and bolts on the winch, winch mount, and related hardware prior to each use. Tighten all nuts that appear to be loose. Stripped, fractured, or bent bolts or nuts need to be replaced.
3. Check all cables prior to use. Replace cables that look worn or frayed.
4. Check all moving or rotating parts. Remove debris that may inhibit the part from moving freely.

**CARELESS INSTALLATION AND OPERATION CAN RESULT IN SERIOUS INJURY OR EQUIPMENT DAMAGE. READ AND UNDERSTAND ALL SAFETY PRECAUTIONS AND OPERATING INSTRUCTIONS BEFORE INSTALLING AND OPERATING THIS PRODUCT.**

