



DEA No. RA0571996
FL License # CMTL-0003
CLIA No. 10D1094068

Certificate of Analysis

Compliance Test

FORIA WELLNESS
2440 Junction Place, #102
Boulder, CO 80301

Batch # WBS001_006
Batch Date: 2022-09-21
Extracted From: hemp

Test Reg State: Oregon

Production Facility: Hudson Hemp
Production Date: 2022-09-21

Order # FOR220921-010001
Order Date: 2022-09-21
Sample # AADL832

Sampling Date: 2022-09-27
Lab Batch Date: 2022-09-27
Completion Date: 2022-10-03

Initial Gross Weight: 44.229 g



Product Image

Potency Tested

Microbiology Petrifilm Passed

Potency 10

Specimen Weight: 111.520 mg

Tested
SOP13.001 (LCUV)

Analyte	Dilution (1:n)	LOD (%)	LOQ (%)	Result (mg/g)	(%)
CBD	10.000	5.40E-5	0.0015	53.9000	5.3900
CBDV	10.000	6.50E-5	0.0015	0.3300	0.0330
CBC	10.000	1.80E-5	0.0015		<LOQ
CBDA	10.000	1.00E-5	0.0015		<LOQ
CBG	10.000	2.48E-4	0.0015		<LOQ
CBGA	10.000	8.00E-5	0.0015		<LOQ
CBN	10.000	1.40E-5	0.0015		<LOQ
Delta-9 THC	10.000	1.30E-5	0.0015		<LOQ
THCA	10.000	3.20E-5	0.0015		<LOQ
THCV	10.000	7.00E-6	0.0015		<LOQ

Potency Summary

Total Active THC None Detected	Total Active CBD 5.390%
Total CBG None Detected	Total CBN None Detected
Other Cannabinoids 0.033%	Total Cannabinoids 5.423%

Microbiology (Petrifilm/Plating)

Passed
SOP13.003 (Petrifilm)

Specimen Weight: 996.000 mg

Dilution Factor: 1.000

Analyte	LOQ (cfu/g)	Action Level (cfu/g)	Result (cfu/g)	Analyte	LOQ (cfu/g)	Action Level (cfu/g)	Result (cfu/g)
Aerobic Bacteria	10	100000	1120.000	Yeast/Mold	10	10000	<10
E. Coli / Coliform	10	1000	<10				

Xueli Gao
Ph.D., DABT
Lab Toxicologist

Aixia Sun
D.H.Sc., M.Sc., B.Sc., MT (AAB)
Lab Director/Principal Scientist



Definitions and Abbreviations used in this report: Total Active CBD = CBD + (CBD-A * 0.877), *Total CBDV = CBDV + (CBDVA * 0.87), Total Active THC = THCA-A * 0.877 + Delta 9 THC, Total THCV = THCV + (THCVA * 0.87), CBG Total = (CBGA * 0.877) + CBG, CBN Total = (CBNA * 0.877) + CBN, Total CBC = CBC + (CBCA * 0.877), Total THC-O-Acetate = Delta 8 THC-O-Acetate + Delta 9 THC-O-Acetate, Other Cannabinoids Total = Total Cannabinoids - All the listed cannabinoids on the summary section, Total Detected Cannabinoids = Delta6a10a-THC + Delta8-THC + Total CBN + CBT + Delta8-THCV + Total CBG + Total CBD + Total THCV + CBL + Total THC + Total CBC + Total CBDV + Delta10-THC + Total THC-O-Acetate, Analyte Details above show the Dry Weight Concentrations unless specified as 12% moisture concentration. (mg/ml) = Milligrams per Milliliter, LOQ = Limit of Quantitation, LOD = Limit of Detection, Dilution = Dilution Factor (ppb) = Parts per Billion, (%) = Percent, (cfu/g) = Colony Forming Unit per Gram (cfu/g) = Colony Forming Unit per Gram, LOD = Limit of Detection, (µg/g) = Microgram per Gram (ppm) = Parts per Million, (ppm) = (µg/g), (aw) = aw (area ratio) = Area Ratio, (mg/Kg) = Milligram per Kilogram, *Measurement of Uncertainty = +/- 10%

This report shall not be reproduced, without written approval, from ACS Laboratory. The results of this report relate only to the material or product analyzed. Test results are confidential unless explicitly waived otherwise. Accredited by a third-party accrediting body as a competent testing laboratory pursuant to ISO/IEC 17025 of the International Organization for Standardization.



DEA No. RA0571996
FL License # CMTL-0003
CLIA No. 10D1094068

Certificate of Analysis

Compliance Test

FORIA WELLNESS
2440 Junction Place, #102
Boulder, CO 80301

Batch # WBS001_006
Batch Date: 2022-09-21
Extracted From: hemp

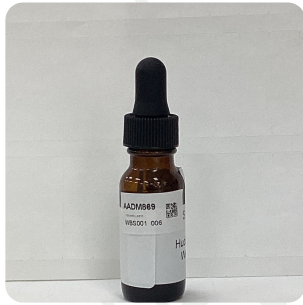
Test Reg State: Oregon

Production Facility: Hudson Hemp
Production Date: 2022-09-21

Order # FOR221003-010002
Order Date: 2022-10-03
Sample # AADM869

Sampling Date: 2022-10-04
Lab Batch Date: 2022-10-04
Completion Date: 2022-10-09

Initial Gross Weight: 44.229 g



Product Image

H Heavy Metals **Passed** **☸** Mycotoxins **Passed** **☹** Pesticides **Passed**

Mycotoxins **Passed**
Specimen Weight: 265.500 mg **SOP13.007 (LCMS)**

Dilution Factor: 5.650

Analyte	LOD (ppm)	LOQ (ppm)	Action Level (ppm)	Result (ppm)	Analyte	LOD (ppm)	LOQ (ppm)	Action Level (ppm)	Result (ppm)
Aflatoxin B1	3.040E-4	0.006	0.02	<LOQ	Aflatoxin G2	2.710E-4	0.006	0.02	<LOQ
Aflatoxin B2	7.700E-5	0.006	0.02	<LOQ	Ochratoxin A	7.540E-4	0.012	0.02	<LOQ
Aflatoxin G1	3.040E-4	0.006	0.02	<LOQ					

Xueli Gao
Xueli Gao Lab Toxicologist
Ph.D., DABT

Aixia Sun
Aixia Sun Lab Director/Principal Scientist
D.H.Sc., M.Sc., B.Sc., MT (AAB)



Definitions and Abbreviations used in this report: Total Active CBD = CBD + (CBD-A * 0.877), *Total CBDV = CBDV + (CBDVA * 0.87), Total Active THC = THCA-A * 0.877 + Delta 9 THC, Total THC = THC + (THCVA * 0.87), CBG Total = (CBGA * 0.877) + CBG, CBN Total = (CBNA * 0.877) + CBN, Total CBC = CBC + (CBCA * 0.877), Total THC-O-Acetate = Delta 8 THC-O-Acetate + Delta 9 THC-O-Acetate, Other Cannabinoids Total = Total Cannabinoids - All the listed cannabinoids on the summary section, Total Detected Cannabinoids = Delta6a10a-THC + Delta8-THC + Total CBN + CBT + Delta8-THCV + Total CBG + Total CBD + Total THC + CBL + Total THC + Total CBC + Total CBDV + Delta10-THC + Total THC-O-Acetate, Analyte Details above show the Dry Weight Concentrations unless specified as 12% moisture concentration. (mg/ml) = Milligrams per Milliliter, LOQ = Limit of Quantitation, LOD = Limit of Detection, Dilution = Dilution Factor (ppb) = Parts per Billion, (%) = Percent, (cfu/g) = Colony Forming Unit per Gram (cfu/g) = Colony Forming Unit per Gram, , LOD = Limit of Detection, (µg/g) = Microgram per Gram (ppm) = Parts per Million, (ppm) = (µg/g), (aw) = aw (area ratio) = Area Ratio, (mg/Kg) = Milligram per Kilogram

This report shall not be reproduced, without written approval, from ACS Laboratory. The results of this report relate only to the material or product analyzed. Test results are confidential unless explicitly waived otherwise. Accredited by a third-party accrediting body as a competent testing laboratory pursuant to ISO/IEC 17025 of the International Organization for Standardization.



Certificate of Analysis

Compliance Test

FORIA WELLNESS
2440 Junction Place, #102
Boulder, CO 80301

Batch # WBS001_006
Batch Date: 2022-09-21
Extracted From: hemp

Test Reg State: Oregon

Production Facility: Hudson Hemp
Production Date: 2022-09-21

Order # FOR221003-010002
Order Date: 2022-10-03
Sample # AADM869

Sampling Date: 2022-10-04
Lab Batch Date: 2022-10-04
Completion Date: 2022-10-09

Initial Gross Weight: 44.229 g



Pesticides

Specimen Weight: 265.500 mg

Passed
SOP13.007
(LCMS/GCMS)

Dilution Factor: 5.650

Analyte	LOD (ppm)	LOQ (ppm)	Action Level (ppm)	Result	Analyte	LOD (ppm)	LOQ (ppm)	Action Level (ppm)	Result
Abamectin	2.880E-4	0.02823	0.3	<LOQ	Imazalil	2.480E-4	0.03	0.1	<LOQ
Acephate	2.300E-5	0.03	3	<LOQ	Imidacloprid	9.400E-5	0.03	3	<LOQ
Acequinocyl	9.564E-3	0.048	2	<LOQ	Kresoxim Methyl	4.200E-5	0.03	1	<LOQ
Acetamiprid	5.200E-5	0.03	3	<LOQ	Malathion	8.200E-5	0.03	2	<LOQ
Aldicarb	2.600E-5	0.03	0.1	<LOQ	Metaxyl	8.100E-5	0.01	3	<LOQ
Azoxystrobin	8.100E-5	0.01	3	<LOQ	Methiocarb	3.200E-5	0.03	0.1	<LOQ
Bifenazate	1.415E-3	0.03	3	<LOQ	Methomyl	2.200E-5	0.03	0.1	<LOQ
Bifenthrin	4.300E-5	0.03	0.5	<LOQ	Mevinphos	2.150E-3	0.03	0.1	<LOQ
Carbaryl	2.200E-5	0.01	0.5	<LOQ	Myclobutanil	1.029E-3	0.03	3	<LOQ
Chlorfenapyr	8.000E-5	0.048	0.1	<LOQ	Naled	9.500E-5	0.03	0.5	<LOQ
Chlorpyrifos	3.500E-5	0.03	0.1	<LOQ	Oxamyl	2.500E-5	0.03	0.5	<LOQ
Clofentezine	1.190E-4	0.03	0.5	<LOQ	Paclobutrazol	6.500E-5	0.03	0.1	<LOQ
Coumaphos	3.770E-3	0.03	0.1	<LOQ	Parathion-methyl	1.710E-3	0.048	0.1	<LOQ
Cyfluthrin	3.110E-3	0.03	1	<LOQ	Pentachloronitrobenzene	1.320E-3	0.03	0.2	<LOQ
Cypermethrin	1.449E-3	0.03	1	<LOQ	Permethrin	3.430E-4	0.03	1	<LOQ
Daminozide	8.850E-4	0.03	0.1	<LOQ	Phosmet	8.200E-5	0.03	0.2	<LOQ
Diazinon	4.400E-5	0.03	0.2	<LOQ	Piperonylbutoxide	2.900E-5	0.03	3	<LOQ
Dichlorvos	2.182E-3	0.03	0.1	<LOQ	Prallethrin	7.980E-4	0.03	0.4	<LOQ
Dimethoate	2.100E-5	0.03	0.1	<LOQ	Propiconazole	7.000E-5	0.03	1	<LOQ
Dimethomorph	5.830E-3	0.03	3	<LOQ	Propoxur	4.600E-5	0.03	0.1	<LOQ
Ethiofepos	3.600E-4	0.03	0.1	<LOQ	Pyrethrins	2.359E-2	0.03	1	<LOQ
Etofenprox	1.160E-4	0.03	0.1	<LOQ	Pyridaben	3.200E-5	0.03	3	<LOQ
Etoxazole	9.500E-5	0.03	1.5	<LOQ	Spinetoram	8.000E-5	0.03	3	<LOQ
Fenhexamid	5.100E-4	0.03	3	<LOQ	Spiromesifen	2.610E-4	0.03	3	<LOQ
Fenoxycarb	1.070E-4	0.03	0.1	<LOQ	Spirotetramat	8.900E-5	0.03	3	<LOQ
Fenpyroximate	1.380E-4	0.03	2	<LOQ	Spiroxamine	1.310E-4	0.03	0.1	<LOQ
Fipronil	1.070E-4	0.03	0.1	<LOQ	Tebuconazole	6.700E-5	0.03	1	<LOQ
Fonicamid	5.170E-4	0.03	2	<LOQ	Thiacloprid	6.400E-5	0.03	0.1	<LOQ
Fludioxonil	1.740E-3	0.03	3	<LOQ	Thiamethoxam	5.000E-5	0.03	1	<LOQ
Hexythiazox	4.900E-5	0.03	2	<LOQ	Trifloxystrobin	3.700E-5	0.03	3	<LOQ



Heavy Metals

Specimen Weight: 246.720 mg

Passed
SOP13.048 (ICP-MS)

Dilution Factor: 202

Analyte	LOD (ppm)	LOQ (ppm)	Action Level (ppm)	Result	Analyte	LOD (ppm)	LOQ (ppm)	Action Level (ppm)	Result
Arsenic (As)	0.00483	0.1	1.5	<LOQ	Lead (Pb)	0.01176	0.1	0.5	<LOQ
Cadmium (Cd)	0.00064	0.1	0.5	<LOQ	Mercury (Hg)	0.00058	0.1	3	<LOQ

Xueli Gao
Xueli Gao Lab Toxicologist
Ph.D., DABT

Aixia Sun
Aixia Sun Lab Director/Principal Scientist
D.H.Sc., M.Sc., B.Sc., MT (AAB)



Definitions and Abbreviations used in this report: Total Active CBD = CBD + (CBD-A * 0.877), *Total CBDV = CBDV + (CBDVA * 0.87), Total Active THC = THCA-A * 0.877 + Delta 9 THC, Total THC = THCV + (THCVA * 0.87), CBG Total = (CBGA * 0.877) + CBG, CBN Total = (CBNA * 0.877) + CBN, Total CBC = CBC + (CBCA * 0.877), Total THC-O-Acetate = Delta 8 THC-O-Acetate + Delta 9 THC-O-Acetate, Other Cannabinoids Total = Total Cannabinoids - All the listed cannabinoids on the summary section, Total Detected Cannabinoids = Delta6a10a-THC + Delta8-THC + Total CBN + CBT + Delta8-THCV + Total CBG + Total CBD + Total THC + CBL + Total THC + Total CBC + Total CBDV + Delta10-THC + Total THC-O-Acetate, Analyte Details above show the Dry Weight Concentrations unless specified as 12% moisture concentration. (mg/ml) = Milligrams per Milliliter, LOQ = Limit of Quantitation, LOD = Limit of Detection, Dilution = Dilution Factor (ppb) = Parts per Billion, (%) = Percent, (cfu/g) = Colony Forming Unit per Gram (cfu/g) = Colony Forming Unit per Gram, LOD = Limit of Detection, (µg/g) = Microgram per Gram (ppm) = Parts per Million, (ppm) = (µg/g), (aw) = aw (area ratio) = Area Ratio, (mg/Kg) = Milligram per Kilogram

This report shall not be reproduced, without written approval, from ACS Laboratory. The results of this report relate only to the material or product analyzed. Test results are confidential unless explicitly waived otherwise. Accredited by a third-party accrediting body as a competent testing laboratory pursuant to ISO/IEC 17025 of the International Organization for Standardization.