



DEA No. RA0571996
FL License # CMTL-0003
CLIA No. 10D1094068

Certificate of Analysis

Compliance Test

FORIA WELLNESS
2440 Junction Place, #102
Boulder, CO 80301

Batch # IBS001_006
Batch Date: 2022-08-16
Extracted From: hemp

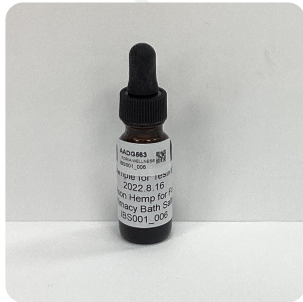
Test Reg State: Oregon

Production Facility: Hudson Hemp
Production Date: 2022-08-16

Order # FOR220816-040001
Order Date: 2022-08-16
Sample # AADG563

Sampling Date: 2022-08-19
Lab Batch Date: 2022-08-19
Completion Date: 2022-08-23

Initial Gross Weight: 45.843 g



Product Image

Potency
Tested

Microbiology (qPCR)
Passed

Potency 10 **Tested**
SOP13.001 (LCUV)

Specimen Weight: 118.450 mg

Analyte	Dilution (1:n)	LOD (%)	LOQ (%)	Result (mg/g)	(%)
CBD	1000.000	5.40E-5	0.0015	64.1300	6.4130
CBG	1000.000	2.48E-4	0.0015	0.5900	0.0590
CBDV	1000.000	6.50E-5	0.0015	0.2300	0.0230
CBC	1000.000	1.80E-5	0.0015	<LOQ	<LOQ
THCA	1000.000	3.20E-5	0.0015	<LOQ	<LOQ
Delta-9 THC	1000.000	1.30E-5	0.0015	<LOQ	<LOQ
CBN	1000.000	1.40E-5	0.0015	<LOQ	<LOQ
CBGA	1000.000	8.00E-5	0.0015	<LOQ	<LOQ
CBDa	1000.000	1.00E-5	0.0015	<LOQ	<LOQ
THCV	1000.000	7.00E-6	0.0015	<LOQ	<LOQ

Potency Summary

Total THC None Detected	Total CBD 6.413%
Total CBG 0.059%	Total CBN None Detected
Other Cannabinoids 0.023%	Total Cannabinoids 6.495%

Microbiology (qPCR) **Passed**
SOP13.017 (qPCR)

Specimen Weight: 224.320 mg

Dilution Factor: 1.000

Analyte	Result (cfu/g)	Remark	Analyte	Result (cfu/g)	Remark
Total Aerobic Count	Not Detected	Not Detected	Total	Not	Not
Total Coliform	Not Detected	Not Detected	Enterobacteriaceae	Detected	Detected
			Total Yeast/Mold	Not	Not
				Detected	Detected

Xueli Gao
Ph.D., DABT
Lab Toxicologist

Aixia Sun
D.H.Sc., M.Sc., B.Sc., MT (AAB)
Lab Director/Principal Scientist



Definitions and Abbreviations used in this report: Total CBD = CBD + (CBD-A * 0.877), *Total CBDV = CBDV + (CBDVA * 0.87), Total THC = THCA-A * 0.877 + Delta 9 THC, Total THCV = THCV + (THCVA * 0.87), CBG Total = (CBGA * 0.877) + CBG, CBN Total = (CBNA * 0.877) + CBN, Total CBC = CBC + (CBCA * 0.877), Total THC-O-Acetate = Delta 8 THC-O-Acetate + Delta 9 THC-O-Acetate, Other Cannabinoids Total = Total Cannabinoids - All the listed cannabinoids on the summary section, Total Detected Cannabinoids = Delta6a10a-THC + Delta8-THC + Total CBN + CBT + Delta8-THCV + Total CBG + Total CBD + Total THCV + CBL + Total THC + Total CBC + Total CBDV + Delta10-THC + Total THC-O-Acetate, Analyte Details above show the Dry Weight Concentrations unless specified as 12% moisture concentration. (mg/ml) = Milligrams per Milliliter, LOQ = Limit of Quantitation, LOD = Limit of Detection, Dilution = Dilution Factor (ppb) = Parts per Billion, (%) = Percent, (cfu/g) = Colony Forming Unit per Gram (cfu/g) = Colony Forming Unit per Gram, , LOD = Limit of Detection, (µg/g) = Microgram per Gram (ppm) = Parts per Million, (ppm) = (µg/g), (aw) = aw (area ratio) = Area Ratio, (mg/Kg) = Milligram per Kilogram, *Measurement of Uncertainty = +/- 10%

This report shall not be reproduced, without written approval, from ACS Laboratory. The results of this report relate only to the material or product analyzed. Test results are confidential unless explicitly waived otherwise. Accredited by a third-party accrediting body as a competent testing laboratory pursuant to ISO/IEC 17025 of the International Organization for Standardization.



DEA No. RA0571996
FL License # CMTL-0003
CLIA No. 10D1094068

Certificate of Analysis

Compliance Test

FORIA WELLNESS
2440 Junction Place, #102
Boulder, CO 80301

Batch # IBS001_006
Batch Date: 2022-08-16
Extracted From: hemp

Test Reg State: Oregon

Production Facility: Hudson Hemp
Production Date: 2022-08-16

Order # FOR220824-010002
Order Date: 2022-08-24
Sample # AADH515

Sampling Date: 2022-08-24
Lab Batch Date: 2022-08-24
Completion Date: 2022-08-27

Initial Gross Weight: 45.843 g



Product Image

H Heavy Metals
Passed

M Mycotoxins
Passed

P Pesticides
Passed

Mycotoxins

Specimen Weight: 260.200 mg

Passed
SOP13.007 (LCMS)

Dilution Factor: 5.760

Analyte	LOD (ppm)	LOQ (ppm)	Action Level (ppm)	Result (ppm)	Analyte	LOD (ppm)	LOQ (ppm)	Action Level (ppm)	Result (ppm)
Aflatoxin B1	3.040E-4	0.006	0.02	<LOQ	Aflatoxin G2	2.710E-4	0.006	0.02	<LOQ
Aflatoxin B2	7.700E-5	0.006	0.02	<LOQ	Ochratoxin A	7.540E-4	0.012	0.02	<LOQ
Aflatoxin G1	3.040E-4	0.006	0.02	<LOQ					

Xueli Gao
Xueli Gao Lab Toxicologist
Ph.D., DABT

Aixia Sun
Aixia Sun Lab Director/Principal Scientist
D.H.Sc., M.Sc., B.Sc., MT (AAB)



Definitions and Abbreviations used in this report: Total CBD = CBD + (CBD-A * 0.877), *Total CBDV = CBDV + (CBDVA * 0.87), Total THC = THCA-A * 0.877 + Delta 9 THC, Total THCV = THCV + (THCVA * 0.87), CBG Total = (CBGA * 0.877) + CBG, CBN Total = (CBNA * 0.877) + CBN, Total CBC = CBC + (CBCA * 0.877), Total THC-O-Acetate = Delta 8 THC-O-Acetate + Delta 9 THC-O-Acetate, Other Cannabinoids Total = Total Cannabinoids - All the listed cannabinoids on the summary section, Total Detected Cannabinoids = Delta6a10a-THC + Delta8-THC + Total CBN + CBT + Delta8-THCV + Total CBG + Total CBD + Total THCV + CBL + Total THC + Total CBC + Total CBDV + Delta10-THC + Total THC-O-Acetate, Analyte Details above show the Dry Weight Concentrations unless specified as 12% moisture concentration. (mg/ml) = Milligrams per Milliliter, LOQ = Limit of Quantitation, LOD = Limit of Detection, Dilution = Dilution Factor (ppb) = Parts per Billion, (%) = Percent, (cfu/g) = Colony Forming Unit per Gram (cfu/g) = Colony Forming Unit per Gram, , LOD = Limit of Detection, (µg/g) = Microgram per Gram (ppm) = Parts per Million, (ppm) = (µg/g), (aw) = aw (area ratio) = Area Ratio, (mg/Kg) = Milligram per Kilogram

This report shall not be reproduced, without written approval, from ACS Laboratory. The results of this report relate only to the material or product analyzed. Test results are confidential unless explicitly waived otherwise. Accredited by a third-party accrediting body as a competent testing laboratory pursuant to ISO/IEC 17025 of the International Organization for Standardization.



DEA No. RA0571996
FL License # CMTL-0003
CLIA No. 10D1094068

Certificate of Analysis

Compliance Test

FORIA WELLNESS
2440 Junction Place, #102
Boulder, CO 80301

Batch # IBS001_006
Batch Date: 2022-08-16
Extracted From: hemp

Test Reg State: Oregon

Production Facility: Hudson Hemp
Production Date: 2022-08-16

Order # FOR220824-010002
Order Date: 2022-08-24
Sample # AADH515

Sampling Date: 2022-08-24
Lab Batch Date: 2022-08-24
Completion Date: 2022-08-27

Initial Gross Weight: 45.843 g



Pesticides

Specimen Weight: 260.200 mg

Passed

SOP13.007
(LCMS/GCMS)

Dilution Factor: 5.760

Analyte	LOD (ppm)	LOQ (ppm)	Action Level (ppm)	Result (ppm)	Analyte	LOD (ppm)	LOQ (ppm)	Action Level (ppm)	Result (ppm)
Abamectin	2.880E-4	0.02823	0.3	<LOQ	Imazalil	2.480E-4	0.03	0.1	<LOQ
Acephate	2.300E-5	0.03	3	<LOQ	Imidacloprid	9.400E-5	0.03	3	<LOQ
Acequinocyl	9.564E-3	0.048	2	<LOQ	Kesoxim Methyl	4.200E-5	0.03	1	<LOQ
Acetamiprid	5.200E-5	0.03	3	<LOQ	Malathion	8.200E-5	0.03	2	<LOQ
Aldicarb	2.600E-5	0.03	0.1	<LOQ	Metaxyl	8.100E-5	0.01	3	<LOQ
Azoxystrobin	8.100E-5	0.01	3	<LOQ	Methiocarb	3.200E-5	0.03	0.1	<LOQ
Bifenazate	1.415E-3	0.03	3	<LOQ	Methomyl	2.200E-5	0.03	0.1	<LOQ
Bifenthrin	4.300E-5	0.03	0.5	<LOQ	Mevinphos	2.150E-3	0.03	0.1	<LOQ
Carbaryl	2.200E-5	0.01	0.5	<LOQ	Myclobutanil	1.029E-3	0.03	3	<LOQ
Chlorfenapyr	8.000E-5	0.048	0.1	<LOQ	Naled	9.500E-5	0.03	0.5	<LOQ
Chlorpyrifos	3.500E-5	0.03	0.1	<LOQ	Oxamyl	2.500E-5	0.03	0.5	<LOQ
Clofentezine	1.190E-4	0.03	0.5	<LOQ	Pacllobutrazol	6.500E-5	0.03	0.1	<LOQ
Coumaphos	3.770E-3	0.03	0.1	<LOQ	Parathion-methyl	1.710E-3	0.048	0.1	<LOQ
Cyfluthrin	3.110E-3	0.03	1	<LOQ	Pentachloronitrobenzene	1.320E-3	0.03	0.2	<LOQ
Cypermethrin	1.449E-3	0.03	1	<LOQ	Permethrin	3.430E-4	0.03	1	<LOQ
Daminozide	8.850E-4	0.03	0.1	<LOQ	Phosmet	8.200E-5	0.03	0.2	<LOQ
Diazinon	4.400E-5	0.03	0.2	<LOQ	Piperonylbutoxide	2.900E-5	0.03	3	<LOQ
Dichlorvos	2.182E-3	0.03	0.1	<LOQ	Prallethrin	7.980E-4	0.03	0.4	<LOQ
Dimethoate	2.100E-5	0.03	0.1	<LOQ	Propiconazole	7.000E-5	0.03	1	<LOQ
Dimethomorph	5.830E-3	0.03	3	<LOQ	Propoxur	4.600E-5	0.03	0.1	<LOQ
Ethoprophos	3.600E-4	0.03	0.1	<LOQ	Pyrethrins	2.359E-2	0.03	1	<LOQ
Etofenprox	1.160E-4	0.03	0.1	<LOQ	Pyridaben	3.200E-5	0.03	3	<LOQ
Etoxazole	9.500E-5	0.03	1.5	<LOQ	Spinetoram	8.000E-5	0.03	3	<LOQ
Fenhexamid	5.100E-4	0.03	3	<LOQ	Spiromesifen	2.610E-4	0.03	3	<LOQ
Fenoxycarb	1.070E-4	0.03	0.1	<LOQ	Spirotetramat	8.900E-5	0.03	3	<LOQ
Fenpyroximate	1.380E-4	0.03	2	<LOQ	Spiroxamine	1.310E-4	0.03	0.1	<LOQ
Fipronil	1.070E-4	0.03	0.1	<LOQ	Tebuconazole	6.700E-5	0.03	1	<LOQ
Fonicamid	5.170E-4	0.03	2	<LOQ	Thiacloprid	6.400E-5	0.03	0.1	<LOQ
Fludioxonil	1.740E-3	0.03	3	<LOQ	Thiamethoxam	5.000E-5	0.03	1	<LOQ
Hexythiazox	4.900E-5	0.03	2	<LOQ	Trifloxystrobin	3.700E-5	0.03	3	<LOQ



Heavy Metals

Specimen Weight: 249.730 mg

Passed

SOP13.048 (ICP-MS)

Dilution Factor: 200

Analyte	LOD (ppm)	LOQ (ppm)	Action Level (ppm)	Result (ppm)	Analyte	LOD (ppm)	LOQ (ppm)	Action Level (ppm)	Result (ppm)
Arsenic (As)	0.00483	0.1	1.5	<LOQ	Lead (Pb)	0.01176	0.1	0.5	<LOQ
Cadmium (Cd)	0.00064	0.1	0.5	<LOQ	Mercury (Hg)	0.00058	0.1	3	<LOQ

Xueli Gao
Xueli Gao Lab Toxicologist
Ph.D., DABT

Aixia Sun
Aixia Sun Lab Director/Principal Scientist
D.H.Sc., M.Sc., B.Sc., MT (AAB)



Definitions and Abbreviations used in this report: Total CBD = CBD + (CBD-A * 0.877), *Total CBDV = CBDV + (CBDVA * 0.87), Total THC = THCA-A * 0.877 + Delta 9 THC, Total THCV = THCV + (THCVA * 0.87), CBG Total = (CBGA * 0.877) + CBG, CBN Total = (CBNA * 0.877) + CBN, Total CBC = CBC + (CBCA * 0.877), Total THC-O-Acetate = Delta 8 THC-O-Acetate + Delta 9 THC-O-Acetate, Other Cannabinoids Total = Total Cannabinoids - All the listed cannabinoids on the summary section, Total Detected Cannabinoids = Delta6a10a-THC + Delta8-THC + Total CBN + CBT + Delta8-THCV + Total CBG + Total CBD + Total THCV + CBL + Total THC + Total CBC + Total CBDV + Delta10-THC + Total THC-O-Acetate, Analyte Details above show the Dry Weight Concentrations unless specified as 12% moisture concentration. (mg/ml) = Milligrams per Milliliter, LOQ = Limit of Quantitation, LOD = Limit of Detection, Dilution = Dilution Factor (ppb) = Parts per Billion, (%) = Percent, (cfu/g) = Colony Forming Unit per Gram (cfu/g) = Colony Forming Unit per Gram, LOD = Limit of Detection, (µg/g) = Microgram per Gram (ppm) = Parts per Million, (ppm) = (µg/g), (aw) = aw (area ratio) = Area Ratio, (mg/Kg) = Milligram per Kilogram

This report shall not be reproduced, without written approval, from ACS Laboratory. The results of this report relate only to the material or product analyzed. Test results are confidential unless explicitly waived otherwise. Accredited by a third-party accrediting body as a competent testing laboratory pursuant to ISO/IEC 17025 of the International Organization for Standardization.