



HANDSHIELD Installation Instructions

Installation:

Steps may be different depending on the model. Please ensure you have read through the instructions and understand them clearly before attempting the installation.

- Install the included grommets in the HANDSHIELD.



2

- Installed the mounting screws through the front of the bracket.



- Install the bracket on the handshield using the and provided hardware.





- Tighten down each bolt.



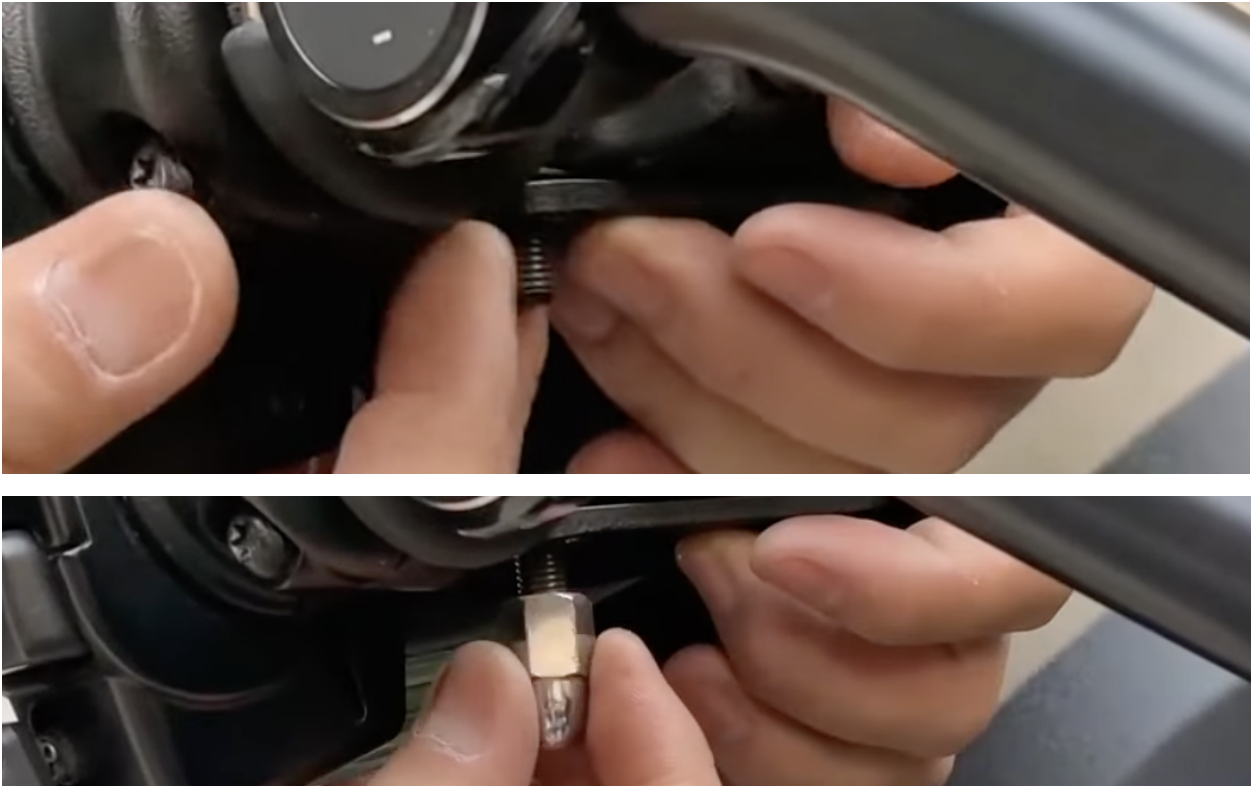
- Repeat the same steps for the other side.

- Remove the mirror by undoing the nut on the bottom of the mirror stem.



- Install onto the bottom of the mirror stem. Use original hardware to secure it to the bike.





- Tighten down the nut and make sure it does not move.