

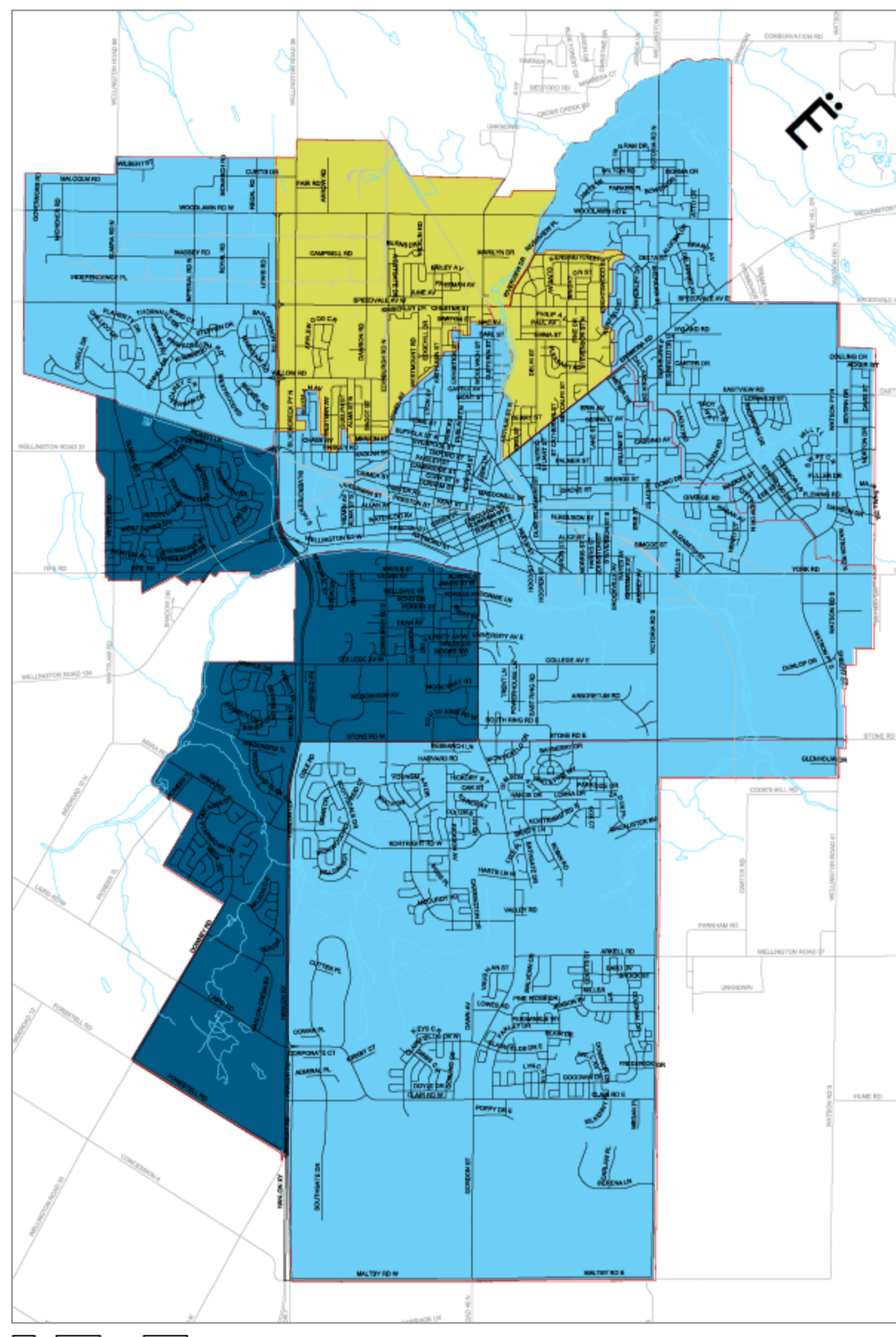
My Water Hardness

Knowing your water hardness will help you select and set up a water softener that will meet the needs of your household. Once you know your water hardness, try the online calculator to determine what size of water softener you need.

You can also request your water hardness data in an alternative format by emailing watercycle@regionofwaterloo.ca.

[Guelph](#) | [Region of Waterloo](#) | [Waterloo](#) | [Kitchener](#) | [Cambridge](#) | [Wellesley](#) | [Woolwich](#) | [Wilmot](#) | [North Dumfries](#)

City of Guelph



City of Guelph
Water hardness
Grains per gallon (gpg)

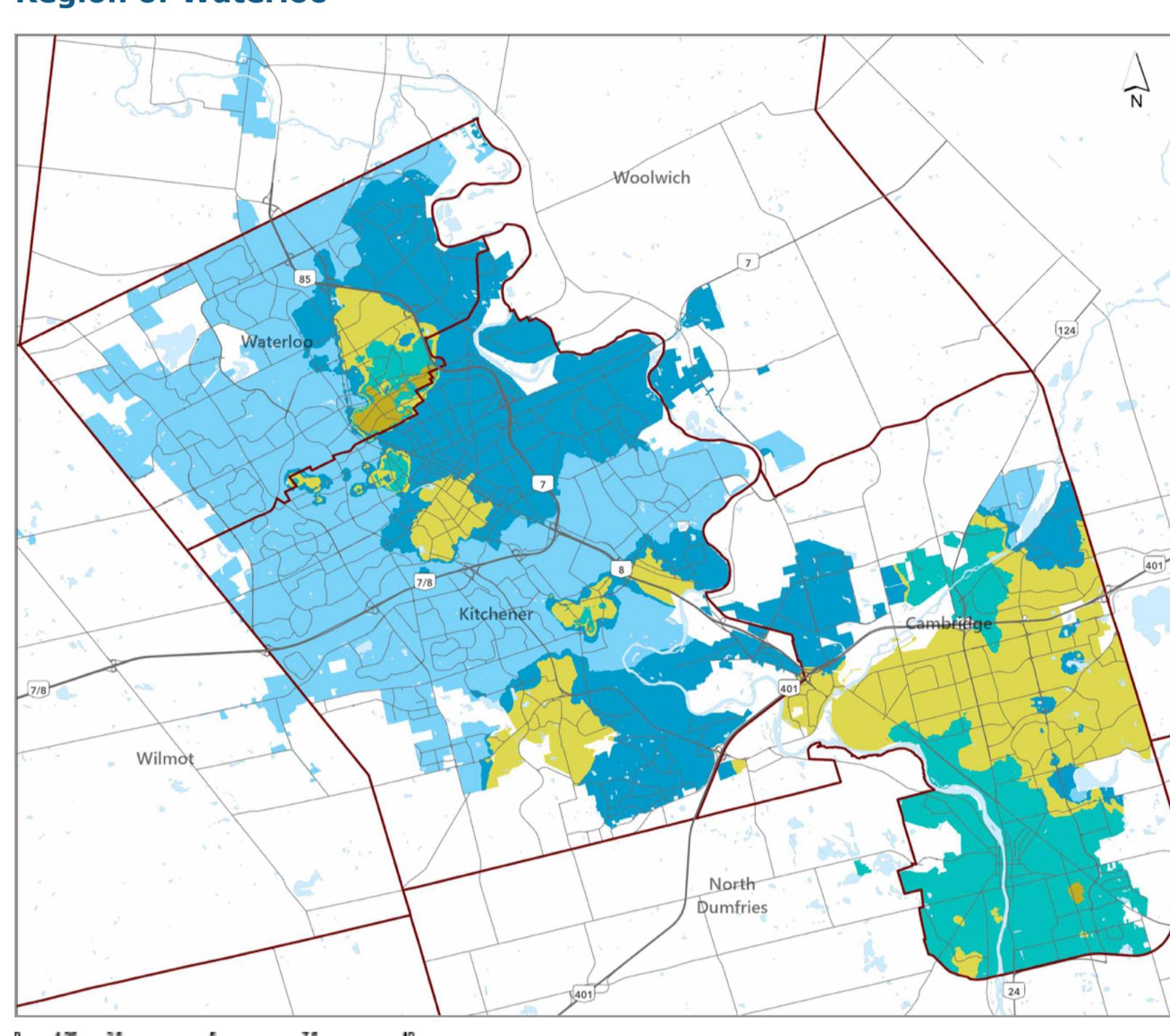
- 21
- 21 – 28
- 21 – 33

Hover over the coloured areas in the key above to view single areas on the map.

[View larger map](#)

[Back to top](#)

Region of Waterloo



Region of Waterloo
Water hardness
Grains per gallon (gpg)

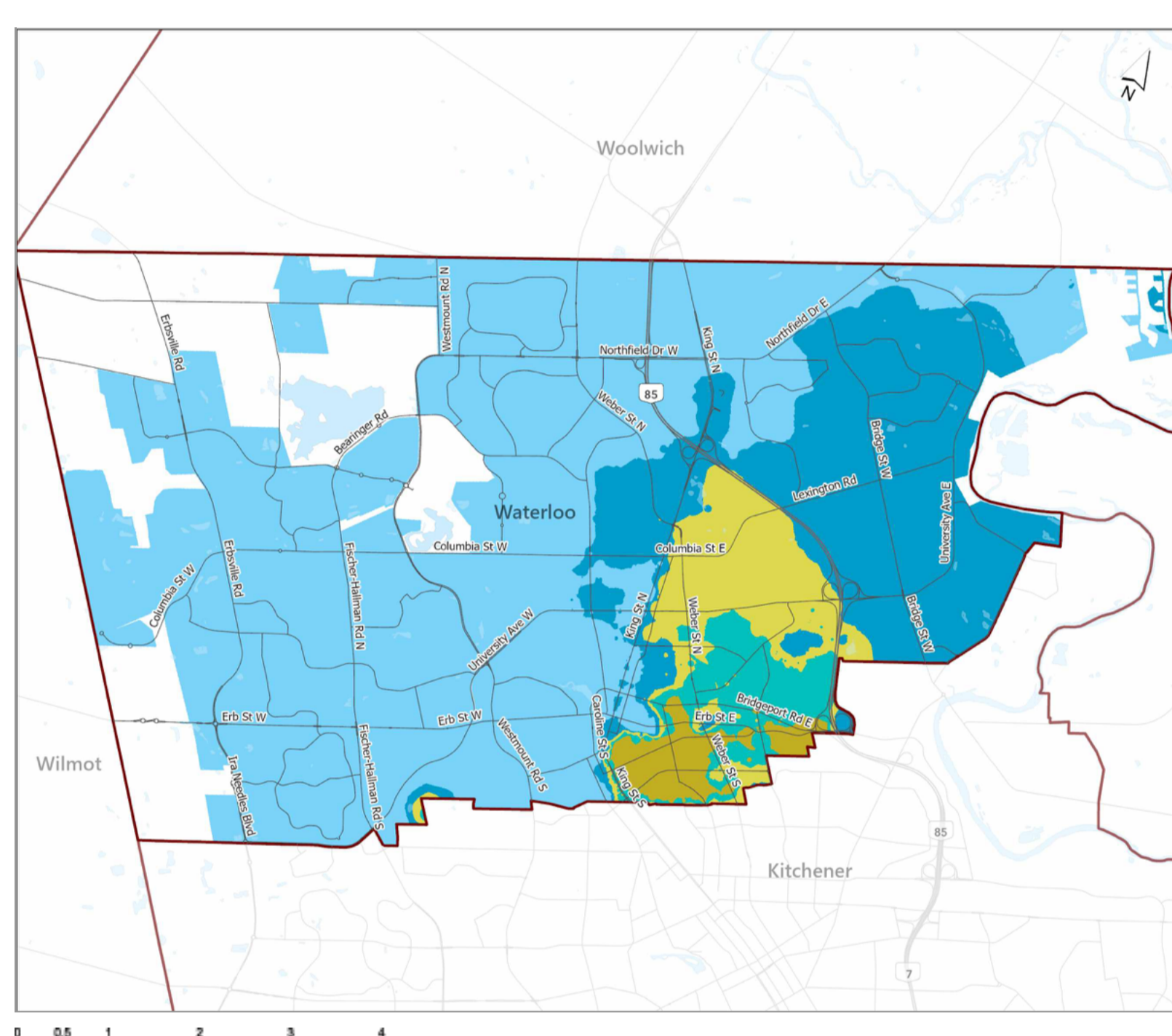
- 17 – 20 gpg
- 20 – 24 gpg
- 24 – 28 gpg
- 32 – 36 gpg
- 36 – 38 gpg

Hover over the coloured areas in the key above to view single areas on the map.

[View larger map](#)

[Back to top](#)

Waterloo



Waterloo
Water hardness
Grains per gallon (gpg)

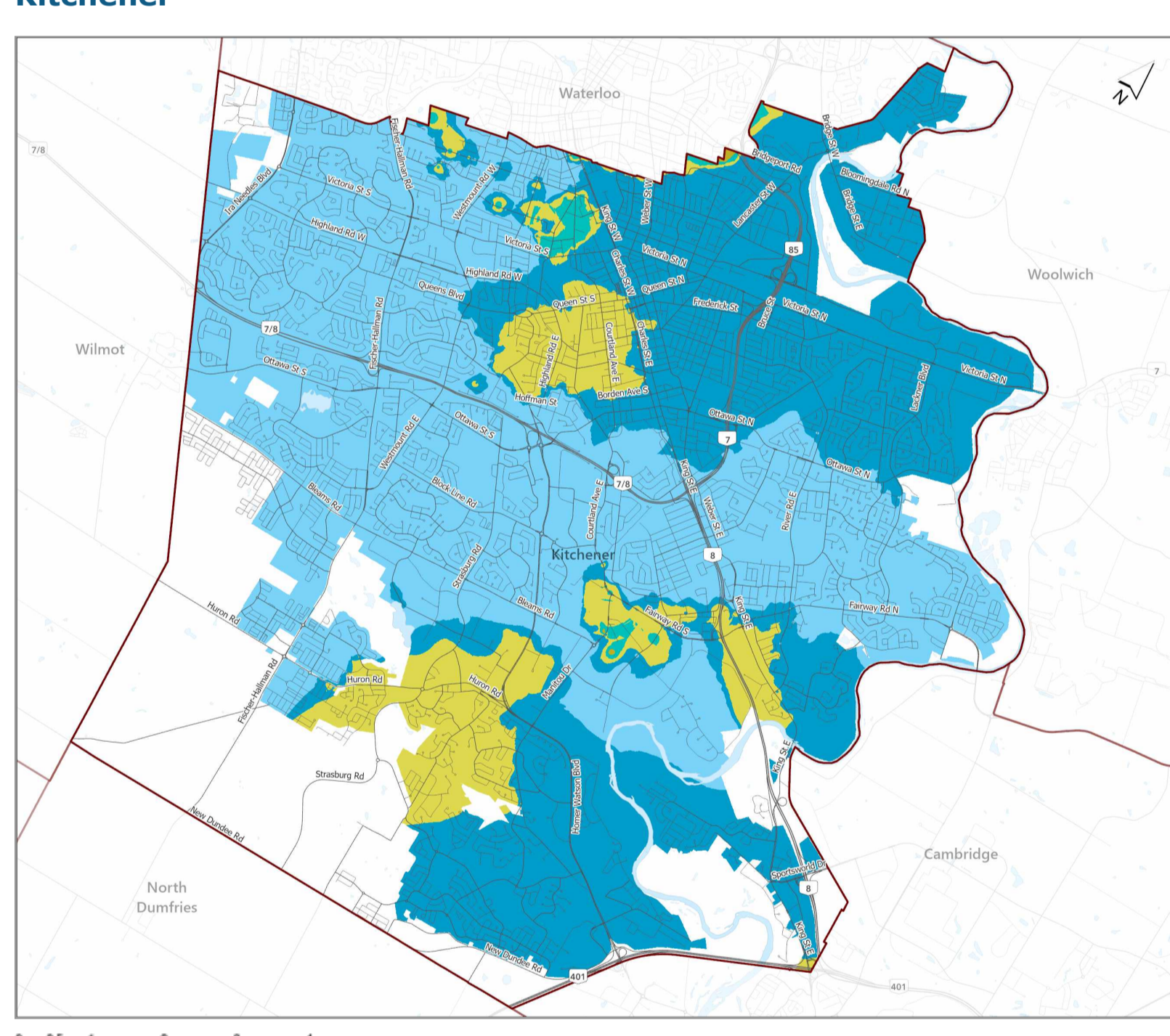
- 17 – 20 gpg
- 20 – 24 gpg
- 24 – 28 gpg
- 28 – 32 gpg
- 32 – 36 gpg

Hover over the coloured areas in the key above to view single areas on the map.

[View larger map](#)

[Back to top](#)

Kitchener



Kitchener
Water hardness
Grains per gallon (gpg)

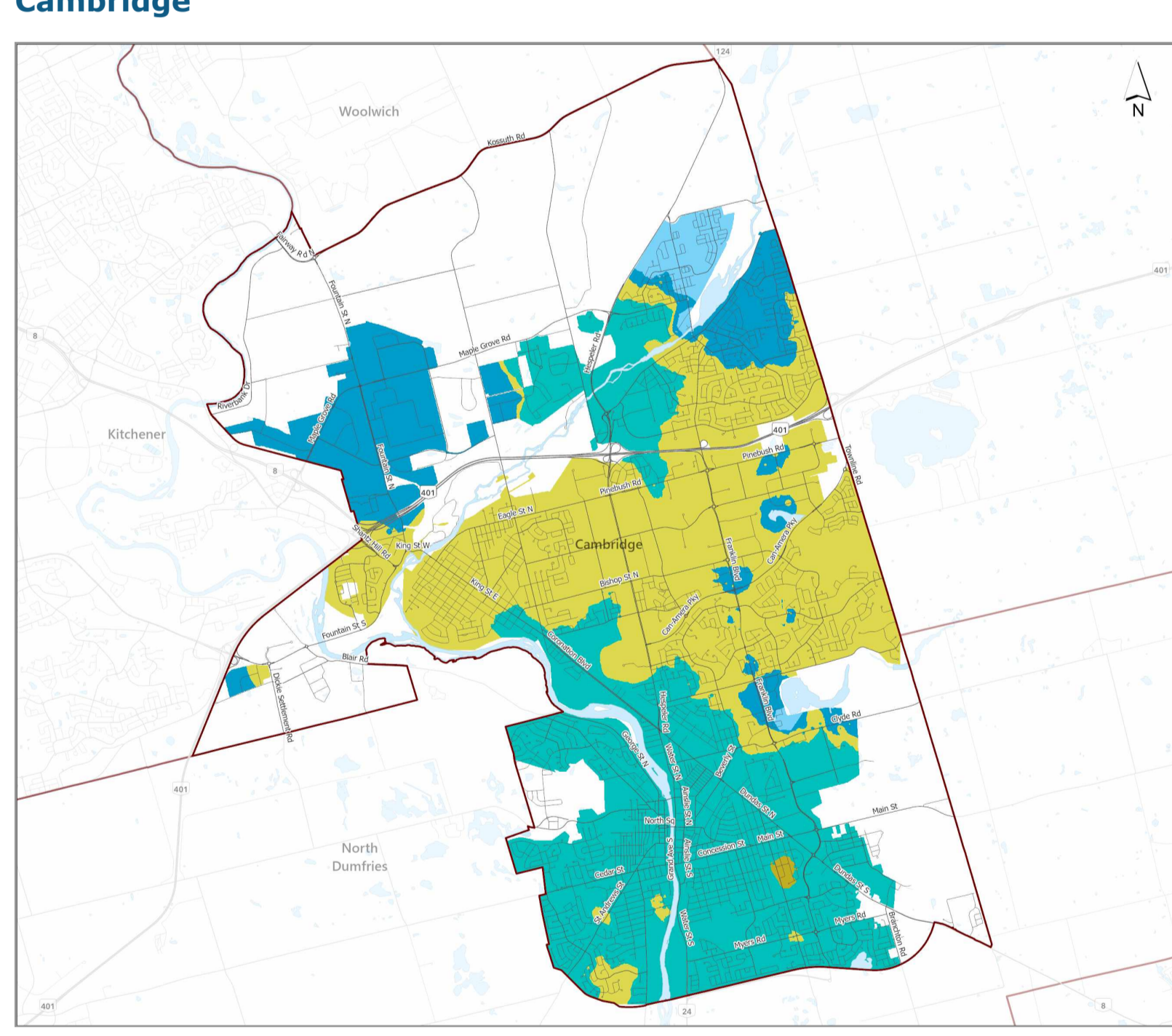
- 17 – 20 gpg
- 20 – 24 gpg
- 24 – 28 gpg
- 28 – 32 gpg
- 32 – 36 gpg

Hover over the coloured areas in the key above to view single areas on the map.

[View larger map](#)

[Back to top](#)

Cambridge



Cambridge
Water hardness
Grains per gallon (gpg)

- 20 – 24 gpg
- 24 – 28 gpg
- 24 – 28 gpg
- 28 – 32 gpg
- 32 – 36 gpg

Hover over the coloured areas in the key above to view single areas on the map.

[View larger map](#)

[Back to top](#)

Wellesley

| Town | Water hardness Grains per gallon (gpg) |
|--------------|---|
| Linwood | 8 |
| St. Clements | 20 |
| Wellesley | 15 |

Woolwich

| Town | Water hardness Grains per gallon (gpg) |
|---------------------------------|---|
| Breslau | 25 |
| Conestogo – East of Grand River | 32 |
| Conestogo – West of Grand River | 21 |
| Heidelberg | 32 |
| Maryhill | 21 |
| St. Jacobs – Elmira | 19 |
| West Montrose | 28 |

Wilmot

| Town | Water hardness Grains per gallon (gpg) |
|------------------|---|
| Baden | 20 |
| Foxboro Green | 57 |
| Mannheim Village | 25 |
| New Dundee | 21 |
| New Hamburg | 19 |
| Shingletown | 21 |
| St. Agatha | 21 |

North Dumfries

| Town | Water hardness Grains per gallon (gpg) |
|-------------------|---|
| Ayr | 21 |
| Branchton Meadows | 27 |
| Lloyd Brown | 31 |
| Roseville | 16 |