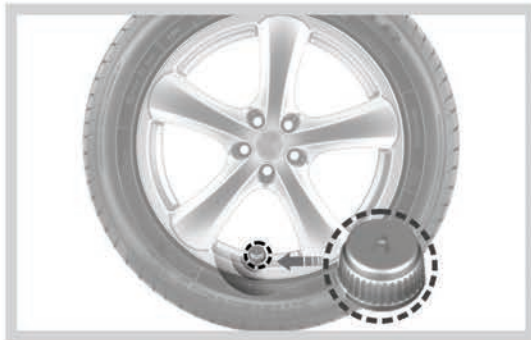




USER MANUAL

MOTORCYCLE SERIES

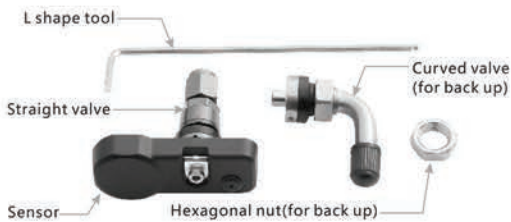
Please Note: These instructions cover all 3 models of TPMS, some points may not be applicable to your install.



DISPLAY INSTALLATION

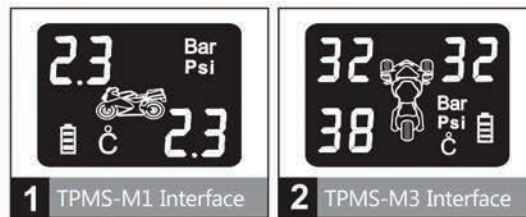
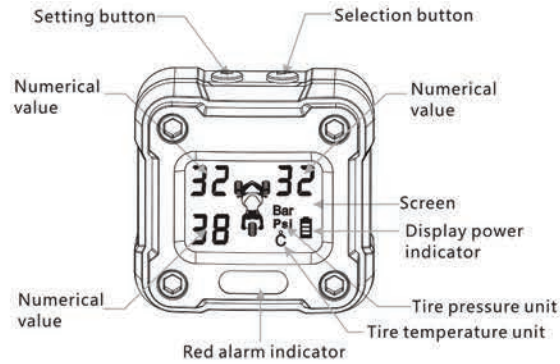


INTERNAL SENSOR TOOLS & PARTS

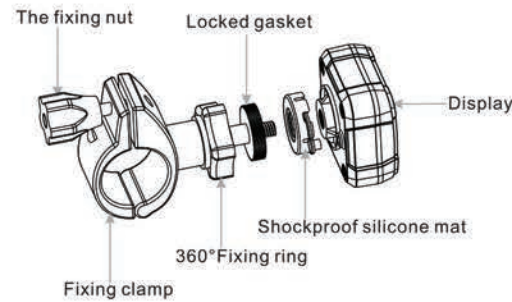


Note: Select the straight valve or curved valve according to the shape of the wheel hub.

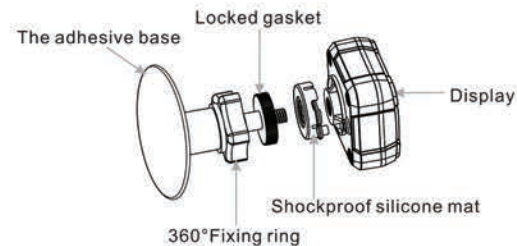
DISPLAY OVERVIEW



Handlebar Mounting Method



Dashboard Mounting Method



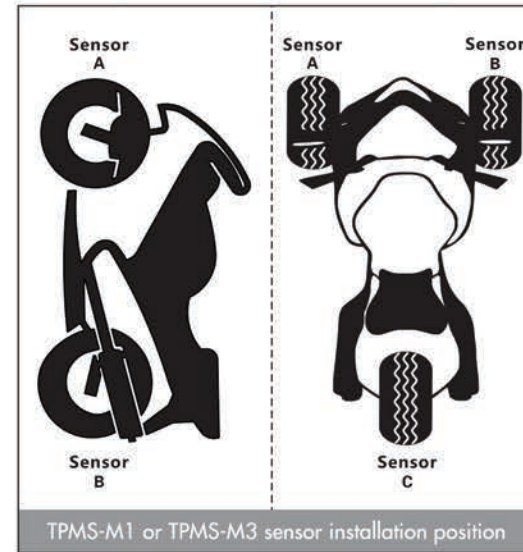
TPMS BASIC SETUP & USAGE

1. Turn on the TPMS display by pressing the selection button for 3 seconds. After starting up the display, press the selection button for 3 seconds until a beep is heard, which will restore the default factory settings. To turn off the display, press the selection button for 5 seconds until two beeps are heard.

2. By default the TPMS system has been set to use standard settings that work for most motorcycles. Please do not change any settings prior to first time installation and setup.

3. Default factory setting alarm values: For the front wheel, high pressure alarm value is 2.8Bar (41Psi), low pressure alarm value is 1.8Bar (26Psi). For the rear wheel, high pressure alarm value is 3.0Bar (43Psi), low pressure alarm value is 2.0Bar (29Psi). The device will also alarm if a temperature over 68C is detected or there is quick or slow air leakage.

POSITIONING THE SENSORS

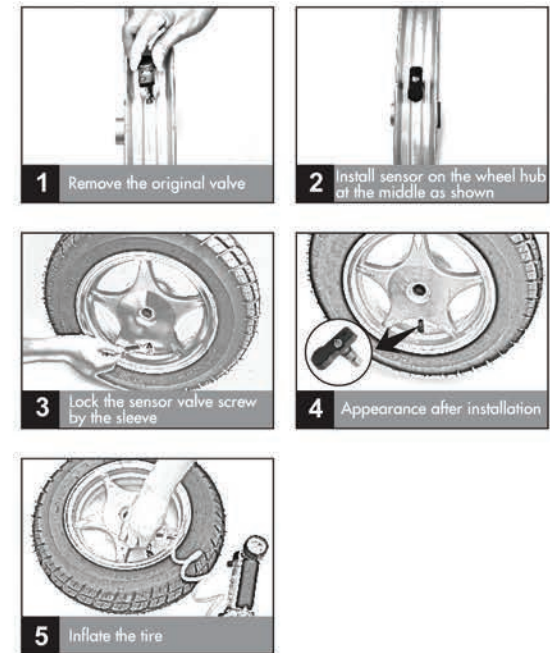


DISPLAY WIRING

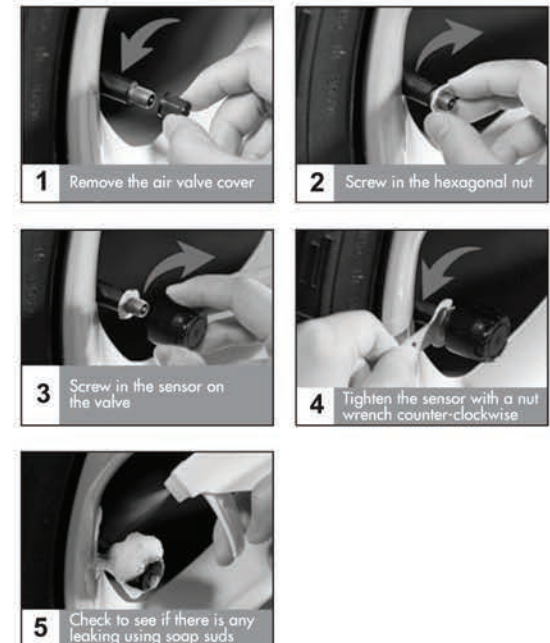


Connect the red wire to 12V switched power source and black wire to ground.

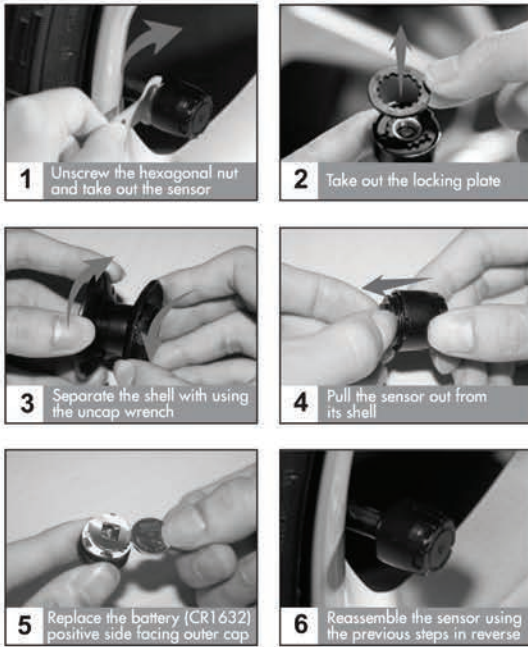
INTERNAL SENSOR INSTALLATION



EXTERNAL SENSOR INSTALLATION



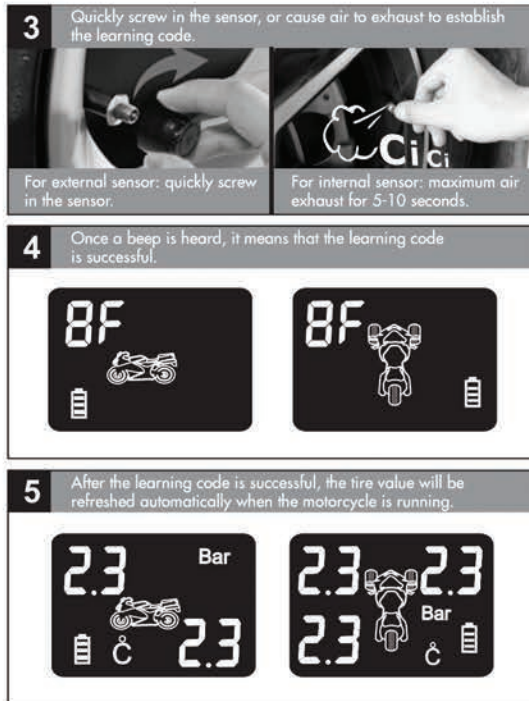
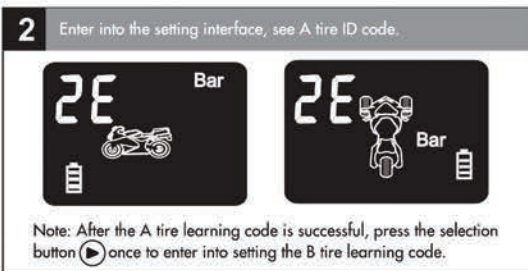
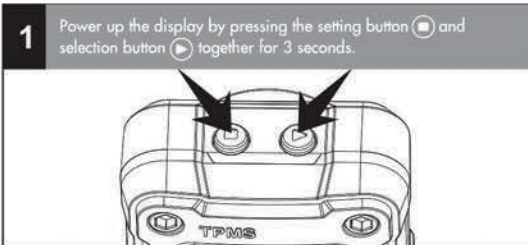
EXTERNAL SENSOR BATTERY REPLACEMENT



SETTING UP THE DISPLAY

1. Tire Learning Code:

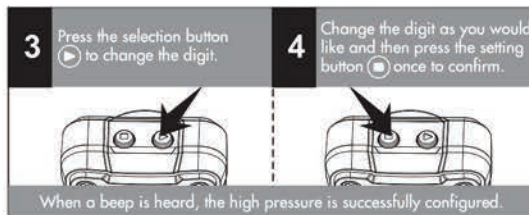
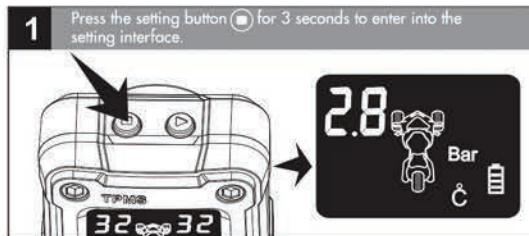
Please do not change any settings before the initial installation unless directed or there are unusual circumstances. The learning code setting is only needed when adding or replacing a sensor.



2. High Pressure Setting:

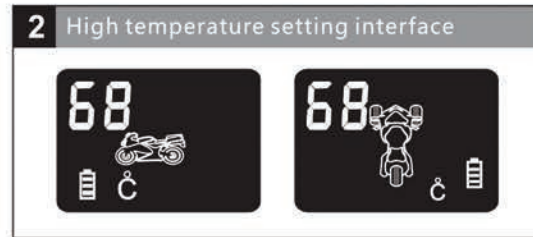
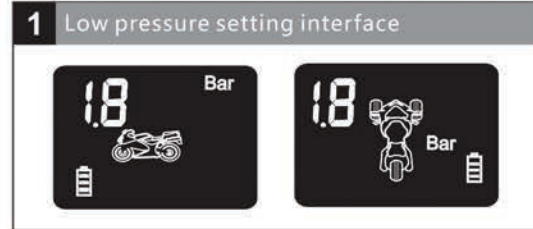
Press the setting button for 3 seconds to enter into the front tire setting.

Press the setting button for 6 seconds to enter into the rear tire setting.



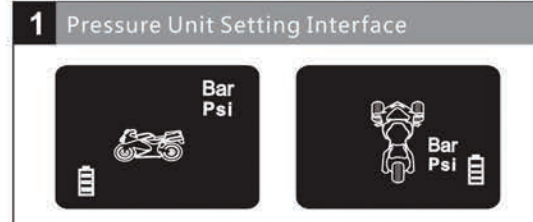
Low Pressure Setting:

Refer to the high pressure setting steps, then after the high pressure setting is successful (a beep is heard), please continue by pressing the selection button once to enter the low pressure setting. (Press the selection button twice to enter into high temperature setting)



4. Pressure Unit Setting:

Press the setting button for 3 seconds to enter into the setting interface, then press the selection button three times until you see "Bar" flashing. This means the pressure unit is "Bar" (Note: If you see "Psi" flashing, it means the unit is set to "Psi"). To change between the Psi and Bar unit types, press the setting button once. A beep is then heard and the updated unit type is flashing, meaning the pressure unit is changed successfully. Finally, press the selection button once to exit the unit setup.



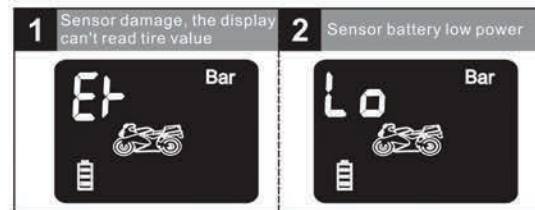
5. Restore Default Factory Settings:

Press the selection button for 3 seconds until a beep is heard. This means the system has restored the default factory configuration.

Note: When the system restores the default factory settings, it will automatically clear all previous user settings.

HAVE A QUESTION? WE CAN HELP!
WWW.CYCLOPSADVENTURESPOrts.COM

6. Failure Indicator:



Value Refresh:

The system will automatically refresh the value of tire pressure and temperature when the motorcycle speed is over 20KM/H (12.4MPH).

Note: After product installation, please drive the motorcycle to refresh the value and confirm the TPMS is functioning correctly.

OPERATING PARAMETERS:

Display working voltage: 12V DC

DISPLAY DEFAULT ALARM VALUES:

Front wheel high pressure: 2.8Bar (41Psi)

Rear wheel high pressure: 3.0Bar (43Psi)

front wheel low pressure: 1.8Bar (26Psi)

Rear wheel low pressure: 2.0Bar (29Psi)

High temperature: 68 C

External sensor working voltage: 3.0V - CR1632 Battery

Internal sensor working voltage: 3.0V ER20SOT

Sensor monitoring pressure range: 0-3.5Bar (0-50Psi)

General Troubleshooting:

AIR LEAKAGE BETWEEN THE VALVE AND TIRE SENSOR

This is usually due to an uneven edge of the valve. Please adjust the valve or change to a new valve.

SENSOR LOST

Purchase a new sensor from our company, then install and learn the new code for matching. (Refer to learning code steps)

TIRE TRANSPOSITION PROCESSING

Such as the tire replacement position, the sensor must identify the location of their respective housing swap.

TIRE ROTATION

If the tire position is changed, the external sensors should be unscrewed and re-installed on the corresponding tire. If the tire is installed with internal sensors, there should be no need to disassemble the sensors. However, you may need to relearn the new code for the rotation tire sensors.

ADDITIONAL NOTES & STATEMENT:

This product is only suitable for tire pressure within a 3.5bar (50Psi) motorcycle. Tire safety should not rely on this product alone and you should regularly check the tire and make sure they are not punctured, cut, bulging or damaged in other ways.

Note: This system can effectively monitor a motorcycle's tire pressure and tire temperature, but this may not prevent the occurrence of unexpected issues or accidents. Cyclops Adventure Sports will not be liable for any resulting damage from this product caused by direct or indirect losses or from uses with vehicles other than motorcycles.