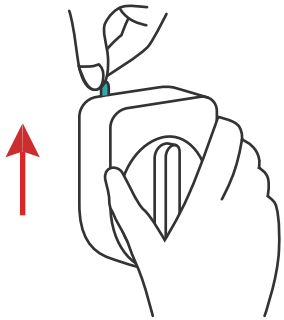
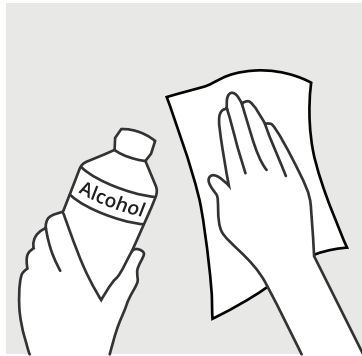


CANDY HOUSE SESAME

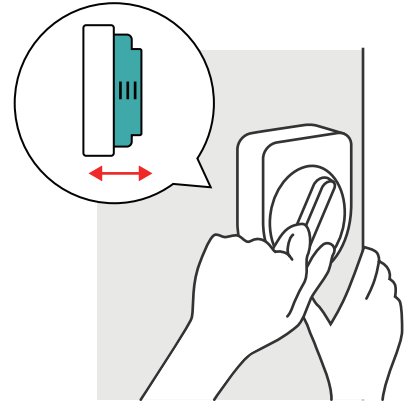
Before Installing Sesame



Remove the battery insulation tab by pulling it away from Sesame.

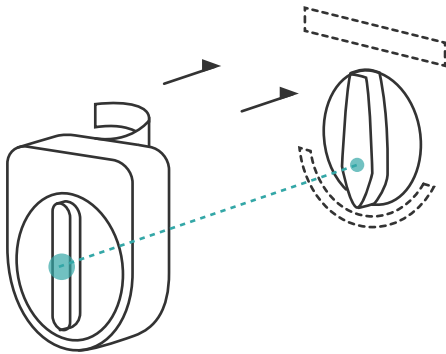


Clean the door surface with isopropyl rubbing alcohol prior to installation for the best results.



Place your Sesame against your lock without removing adhesive backing. Check whether you can manually rotate the lock. If you have trouble, you may need to extend the adjustment clip.

Installing Sesame



Remove the backing of the adhesive strips and attach Sesame to your door. Be sure to line up the axes of rotation of Sesame and your lock during installation for best results.

Once lined up, press Sesame firmly against your door to ensure the adhesive strips are well attached to the door.

Downloading the App



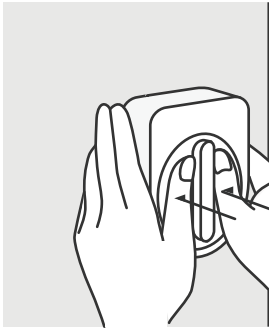
Download on the
App Store



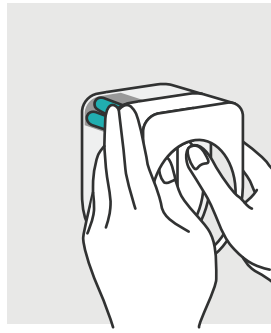
ANDROID APP ON
Google play

Once your Sesame is installed, download the Sesame app on your mobile device to complete setup.

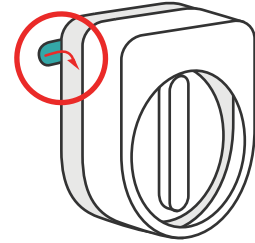
Changing Batteries



Press down on the center of Sesame with your thumbs and lift the cover with your other fingers.

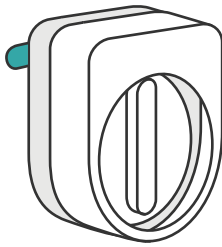


Once the cover is lifted, batteries will be visible in the corner.

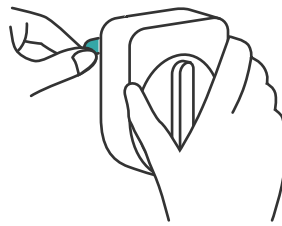


Tuck the adhesive strip back under the cover when replacing the cover.

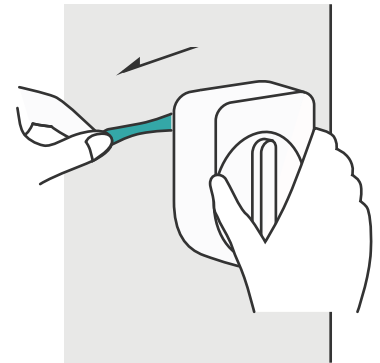
Removing Sesame



Lift the cover away from Sesame to reveal the adhesive strip.

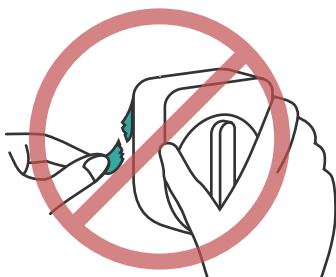


Pinch the adhesive strip between your thumb and forefinger.

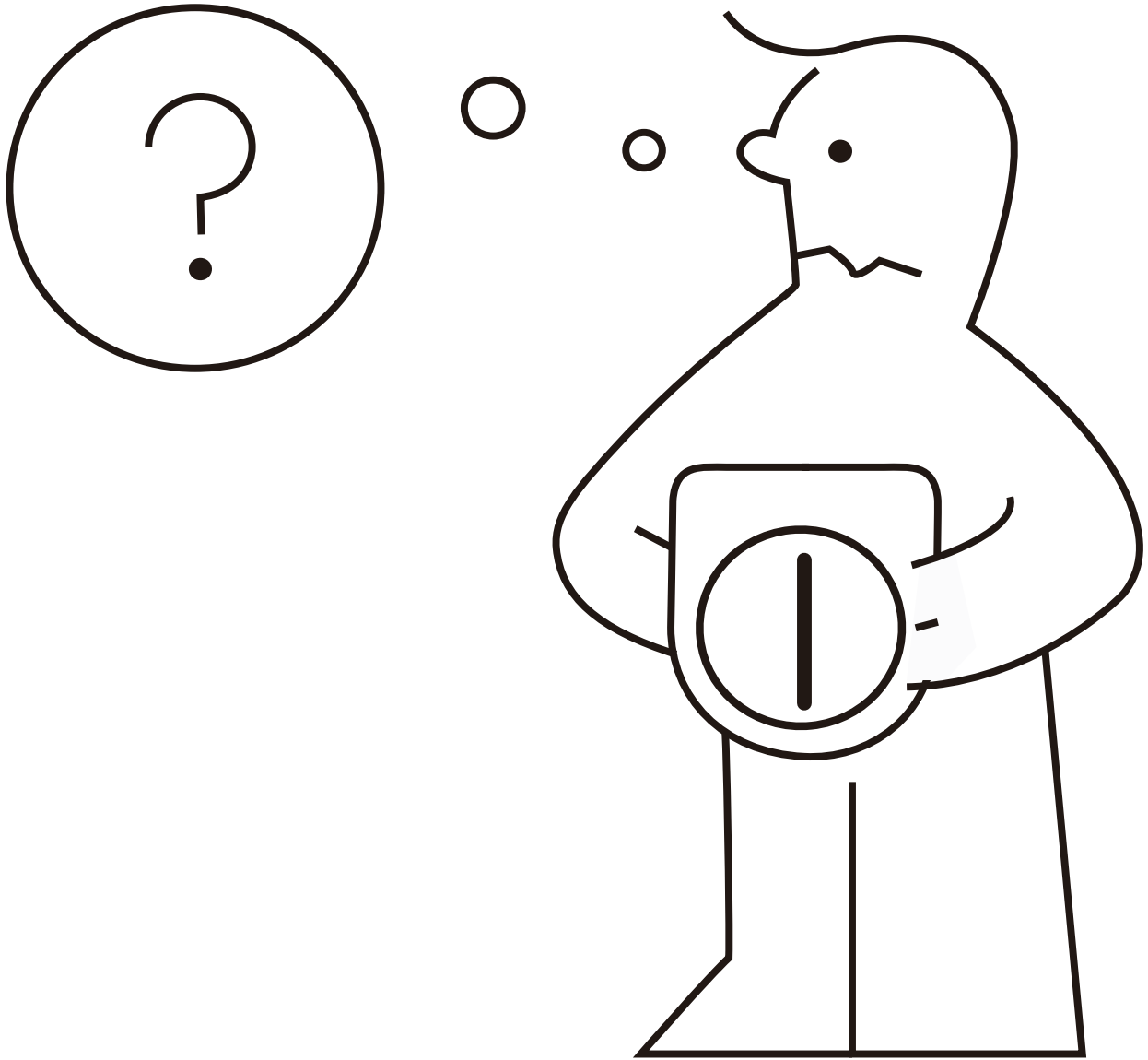


Slowly pull the adhesive strip parallel to the door, keeping your hand against the door as you go. Keep stretching up to 15 inches (38cm) until Sesame is released from your door.

Note



Never pull the adhesive strip toward you as this will cause the strip to break. Always pull the strip parallel to the door. If there is leftover adhesive on your door, you can use floss to scrape off the remaining pieces without damaging your door.



Questions? Email us!



sesame@candyhouse.co



<https://candyhouse.co>



https://www.twitter.com/candyhouse_inc



<https://www.facebook.com/candyhouse.inc>

LIMITED WARRANTY

This limited warranty applies solely to the Sesame and accessories including but not limited to the Wi-Fi Access Point (the "Product"). CANDY HOUSE, Inc. ("CANDY HOUSE") warrants the Product against defects in materials and workmanship under normal home use.

This limited warranty applies for a period of one (1) year from the date of purchase found on your receipt. CANDY HOUSE requires your original receipt to determine the warranty period. During the warranty period, CANDY HOUSE will either repair or replace, at its option, any defective Product or part at no charge to you provided that the Product or part is returned in accordance with CANDY HOUSE' s limited-warranty claims process. Unless otherwise required by applicable law, replacement Products will be warranted only for the unexpired portion of the original warranty plus the time the Product is in CANDY HOUSE' s possession for repair or replacement.

This limited warranty does not apply to cosmetic damage or any defect resulting from accident, negligence, misuse, improper handling, lack of care, failure to follow Product instructions, improper or inadequate maintenance or repair by anyone other than CANDY HOUSE or a CANDY HOUSE designated party, normal wear and tear, use for commercial purposes, Product alteration, the use of any battery other than the Panasonic CR123A 3V primary battery, fire, lightning, flood or other external causes. This limited warranty does not apply if modified or additional software or firmware is installed on the Product, or if any software or mobile app which is not provided by CANDY HOUSE is used with the Product.

Use the Product indoors and where the ambient temperature is between 0° and 35° C (32° to 95° F). Store the Product where the temperature is between -20° and 45° C (-4° to 113° F). Do not leave the Product in your car, because temperatures in parked cars can exceed this range. This limited warranty does not apply to damage to the Product caused by improper use or storage conditions outside these temperature ranges.

The above limited warranty is in lieu of all other express warranties and representations. All implied warranties are limited to the applicable warranty period set forth above. Consequential and incidental damages resulting from the use of the Product or arising out of any breach of contract, or breach of warranty, are not recoverable under this limited warranty. Some States do not allow exclusion or limitation of consequential damages or limitations on how long an implied warranty lasts, so the above limitations may not apply to you. This limited warranty gives you specific legal rights, and you may also have other rights that vary from State to State. This limited warranty is only valid in the United States.

Register the Product at the Sesame by CANDY HOUSE App which can be downloaded on the iOS App Store or Google Play Store.



R 201-170739



2AEZO-SESAME-1

The Federal Communications Commission cautions that changes or modifications of the unit not expressly approved by the party responsible for compliance could void the user' s authority to operate the equipment.

This device complies with Part 15 of the FCC Rules. Operation is subject to the following two conditions:

1. This device may not cause harmful interference, and
2. This device must accept any interference received, including interference that may cause undesired operation.

This equipment has been tested and found to comply with the limits for a Class B digital device, pursuant to Part 15 of the FCC Rules. These limits are designed to provide reasonable protection against harmful interference in a residential installation. This equipment generates, uses and can radiate radio frequency energy and, if not installed and used in accordance with the instructions, may cause harmful interference to radio communications. However, there is no guarantee that interference will not occur in a particular installation. If this equipment does cause harmful interference to radio or television reception, which can be determined by turning the equipment off and on, the user is encouraged to try to correct the interference by one or more of the following measures:

- Reorient or relocate the receiving antenna.
- Increase the separation between the equipment and the receiver.
- Connect the equipment into an outlet different from that to which the receiver is connected.
- Consult the dealer or an experienced radio/TV technician for help.

FCC RF Radiation Exposure Statement:

This Transmitter must not be co-located or operating in conjunction with any other antenna or transmitter. This equipment complies with FCC RF radiation exposure limits set forth for an uncontrolled environment. This equipment should be installed and operated with a minimum distance of 20 centimeters between the radiator and your body.