



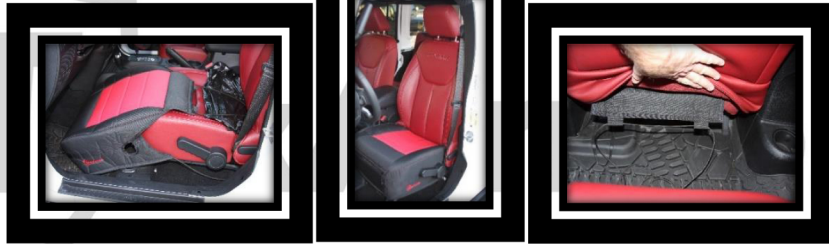
website: www.bartact.com
 phone: 951-319-4008
 email: orders@bartact.com

INSTALLATION INSTRUCTIONS: 2007-2016 Front Seat Covers

- Starting with the front Driver's seat, identify the top and bottom seat covers by the opening that aligns with the seat level adjustment handle (left side of seat). You will start with installing the bottom (seat) by first opening the Velcro section that will fit around the seat level adjustment handle and by fitting the bottom up and pulling the tabs thru the seat center section.

To make the install easier, you can use a plastic bag or any non-fibrous material in order to "slide" the Velcro sections of the seat covers thru the joining sections of the seat and seat back. You can also run a cord/string thru the provided tabs and feed the cord thru the seat. This will allow you to pull the seat cover from the back while you are pushing from the front. (You can use this same process for all seats)

Adhere the Velcro and pull cord from both sides of the seat cover, tie them up for a snug fit



- Next will be the seat back on the Driver's seat. Remove the headrest from the seat by depressing the two (2) tabs on the top of the seat. This will allow you to pull the headrest up and out of the seat.

Now, open the Velcro section at the seat back adjustment handle and slide the seat cover down from the top of the seat. Because of the form fit, you will need to slide down the left and right section separately and work it down until you reach the base of the seat.

Now, use the same process you used for the seat and feed the Velcro section thru the joining sections of the seat and seat back and thru to the other side. Adhere the Velcro to for a snug fit

Note: Some seats have an apron on the back bottom of the seat back of both front seats. You can tuck the apron within the seat cover and then adhere the Velcro or you can leave open (see picture on the far right below as an example).

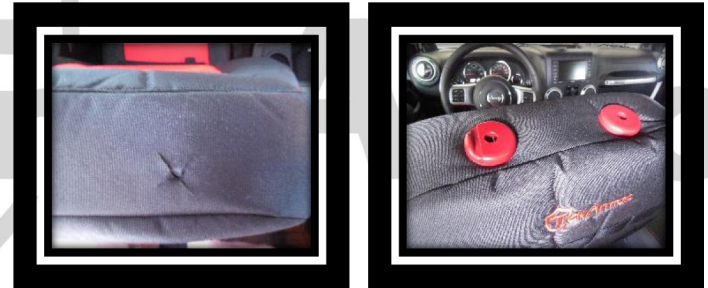


- Follow Steps #1 and #2 to install the Passenger seat covers using the same installation process
- Once you have the front seat covers installed, you can now cut out the opening to insert the headrest on both the driver and passenger seats.

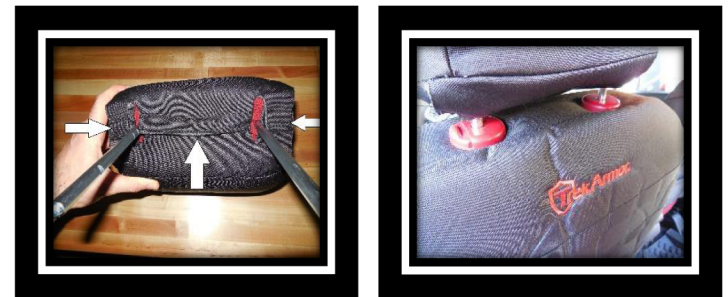
Feel around the top of the seat for the headrest receiver and then find the hole in the receiver. You should use a sharp knife with a fine tip, like an X-Acto knife, so you can pierce thru the seat cover at the hole at the receiver. You will want to cut an "X" out smaller than the diameter of the headrest receiver.

Don't worry about cutting the seat cover, it is engineered to be cut and will not fray or pull away at the cut!

Once the "X" is cut out, you will be able to easily fold the "X" cut pieces under the headrest receiver



- Lastly, install the headrest covers on both driver and passenger side. Pull the covers down over the headrest and adhere the Velcro at the points pictured below. Reinstall the headrest back into the headrest receivers



- Once all seat covers are on, do a once over on all of the seats, to ensure a snug fit and reseat the Velcro as needed.