

Hispano Aviación



ULTIMATUM 2.0

Instrucciones / Instructions

V101.2

ULTIMATUM2.0

TECHNICAL DATA

- Weight kit: 4990 g
- Length: 2005 mm
- Wingspan: 1905 mm
- Servos: 8 servos (not included)
- Radio: 12 Ch minimal recommended (not included)
- 8 Servos: Recommended Hitec HS-7954SH or similar (min. 20Kg torque)
- L.G: ER40Evo Electron Retracts recommended (not included)
- Turbine: 100/160 N – Cheetah 160N recommended (not included)

FLIGHT DETAILS

- Flight time: 7 minutes (no taxi time included)
- Fuel Capacity: 3.1 liters (not included)
- Take off distance: 60/75 m
- Landing distance: 90 m

FLIGHT CONTROLS

- Elevator short: 19.5mm up and 20mm down. Measures taken from the elevator inner side (near the fuselage). Expo recommended 50%
- Elevator long: 22mm up and 20 down. Measures taken from the elevator inner side (near the fuselage). Expo recommended 50%
- Rudder short: 35mm. Expo recommended 30%
- Rudder long: 37mm. Expo recommended 40%
- Aileron short: 9.5mm up and 9mm down. Expo recommended 50%
- Aileron long: 18mm up and 16mm down. Expo recommended 60%
- Flaps: 30mm Take-off / 60mm Landing

This airplane requires 1mm DOWN elevator mix when flaps are full deflected down.

All deflected values are a recommendation.

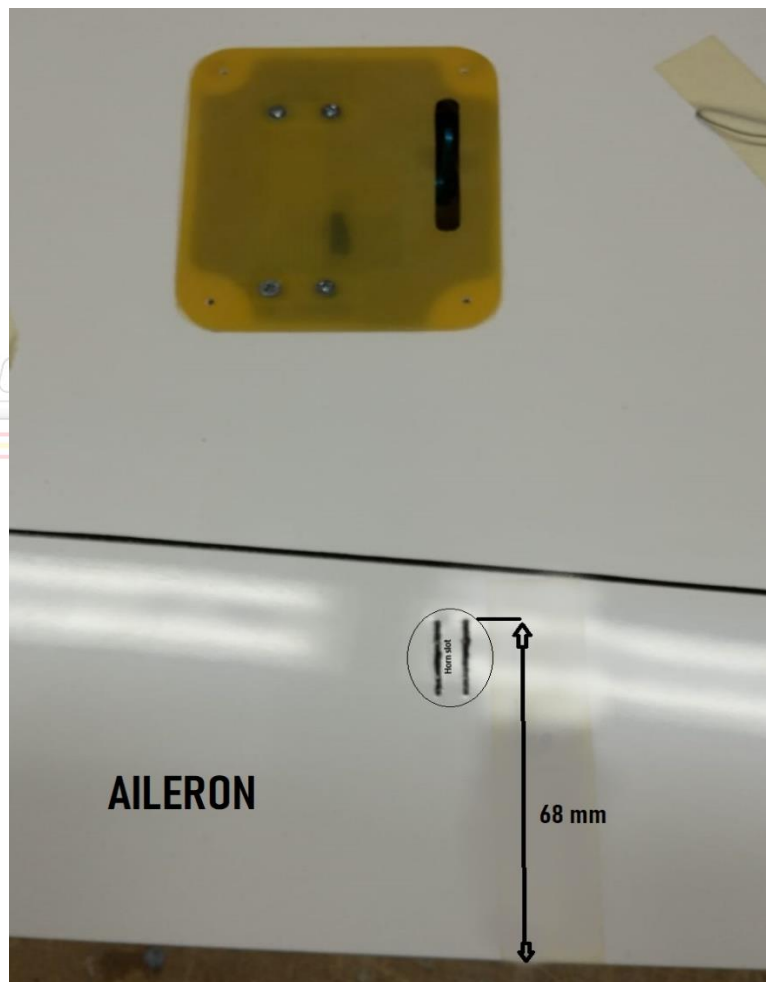
CG: 195 / 200 mm from the leading Edge.

ULTIMATUM2.0

CONTROL HORNS ASSEMBLY

- Glue control horn with epoxy
- All reflected values are a recommendation
- Fine adjustments will be necessary for each transmission

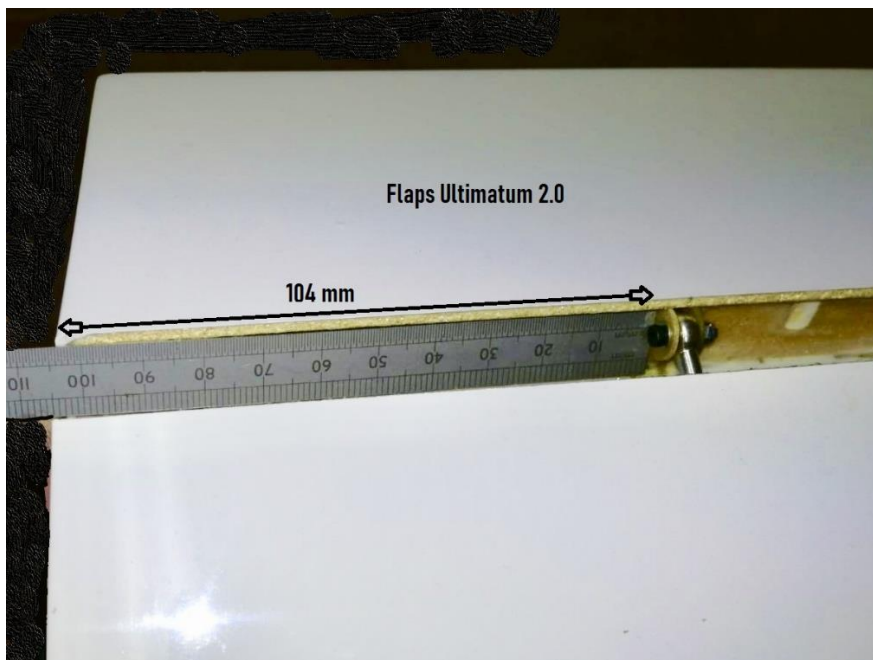
Ailerons



All reflected values are a recommendation

ULTIMATUM 2.0

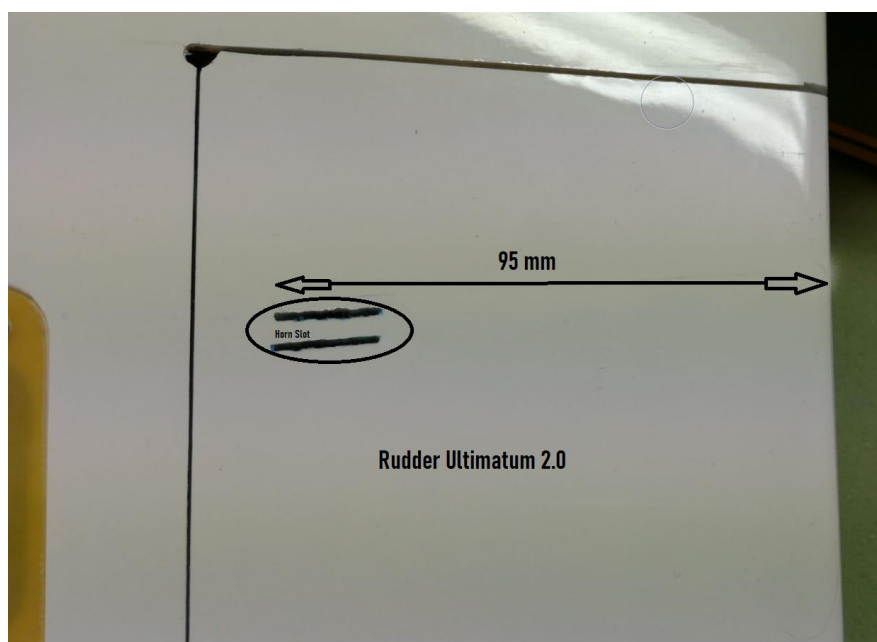
Flaps



Φ During assembly, do not deflect the flap more than 70mm, the hinge could be damaged and will not be covered by the warranty Φ

HISPANO AVIACIÓN

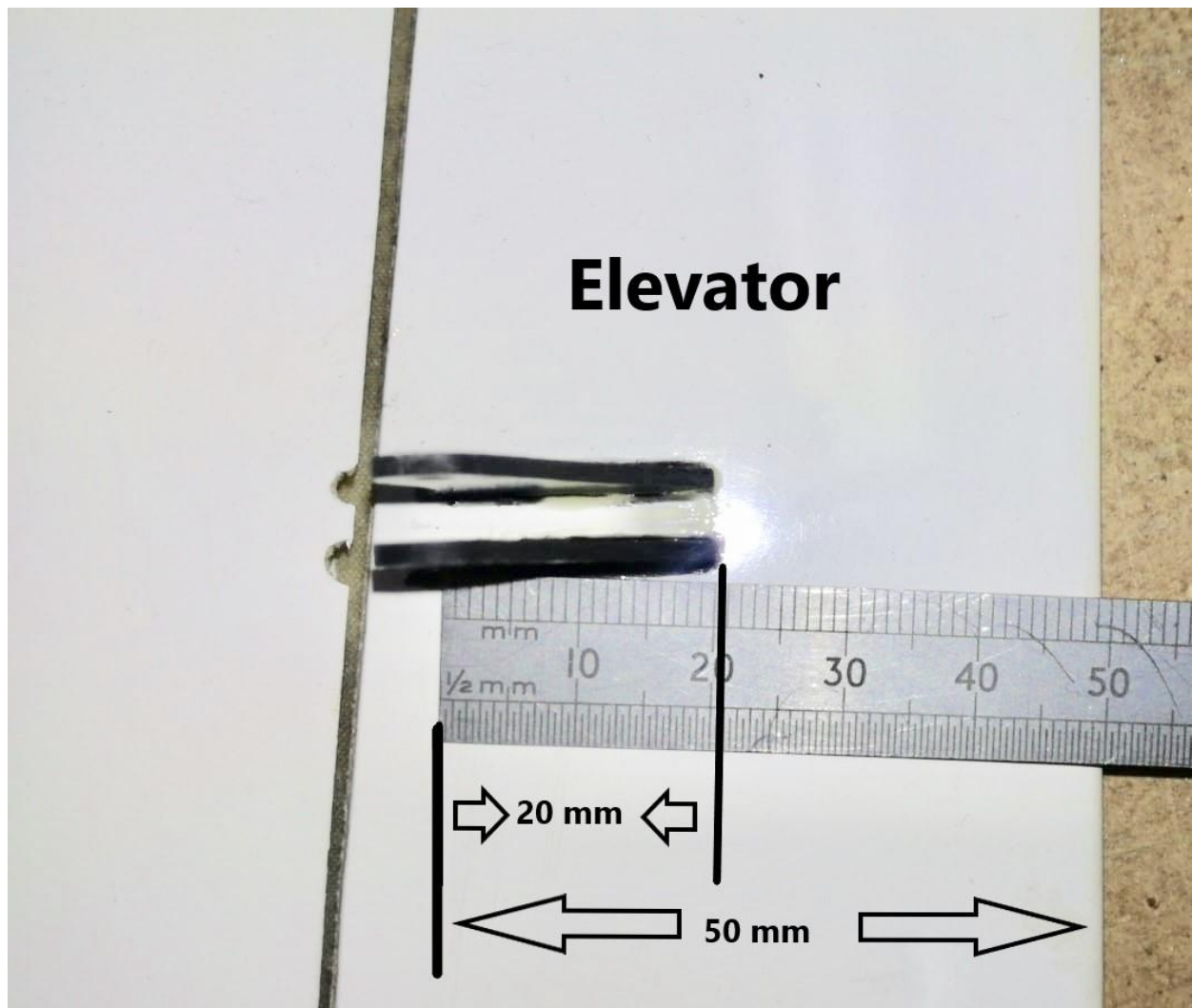
Rudder



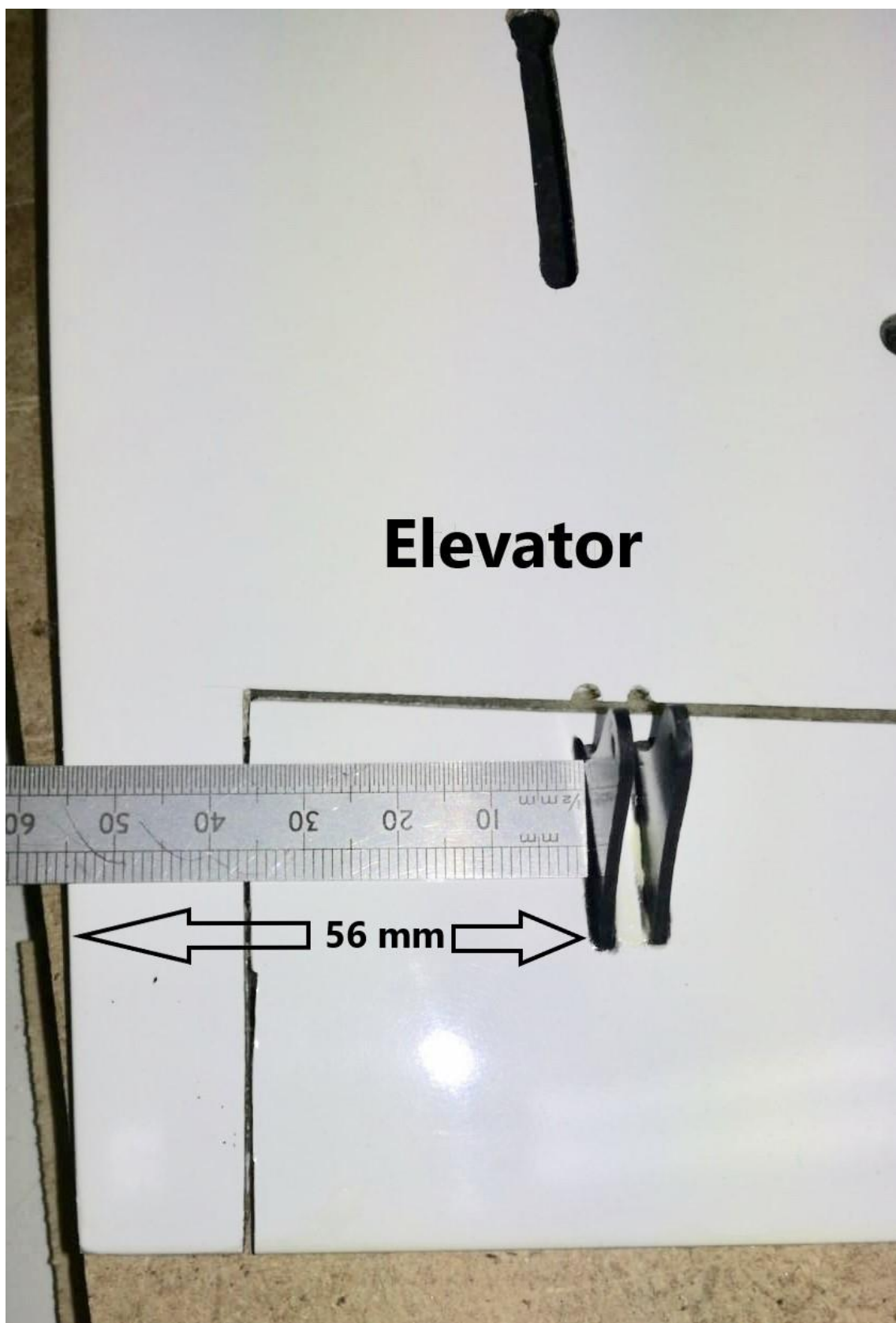
All reflected values are a recommendation

ULTIMATUM2.0

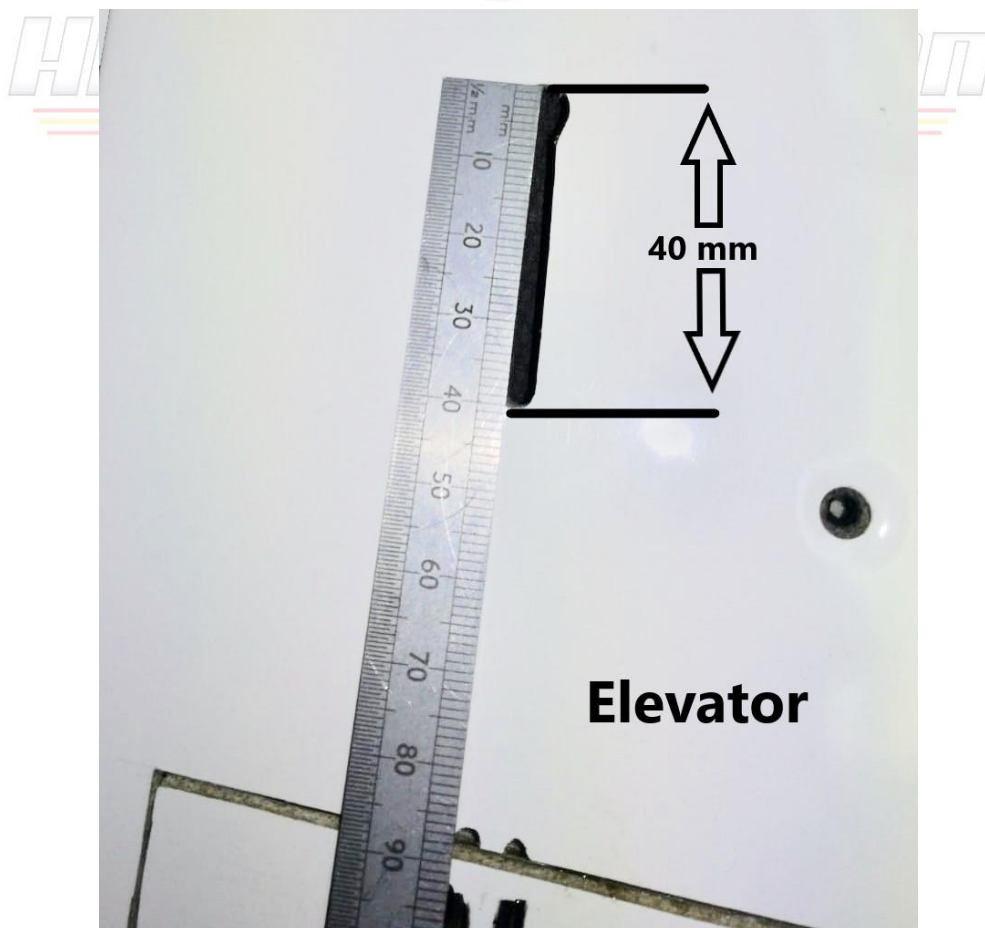
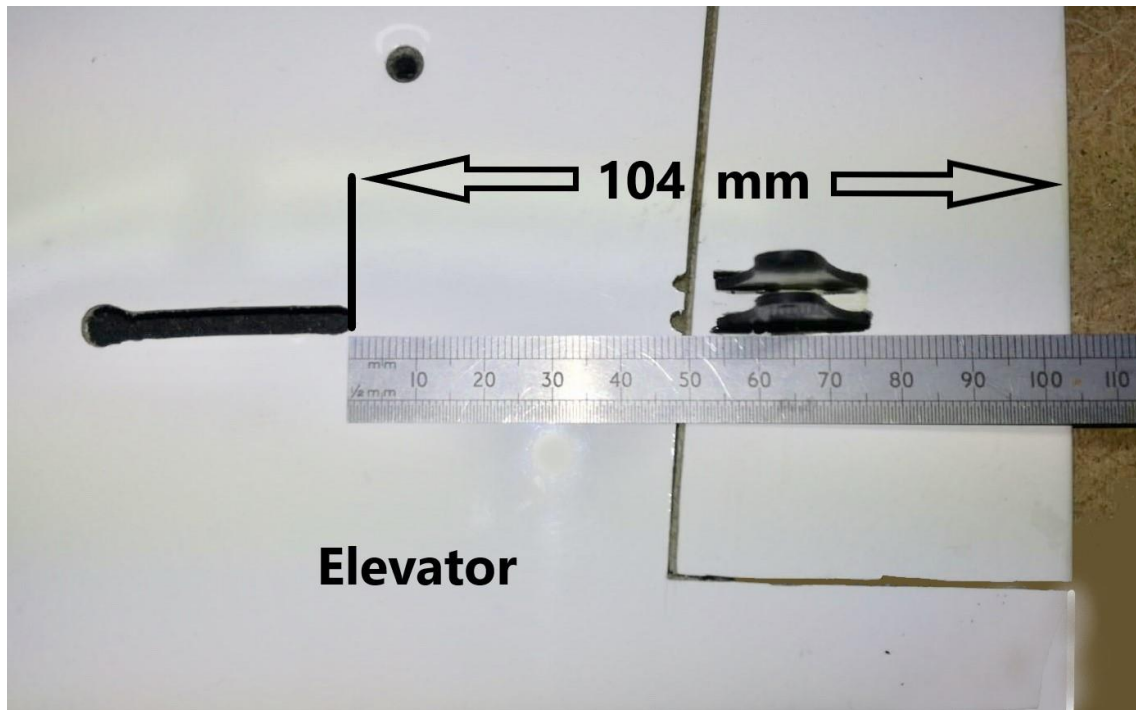
Elevator



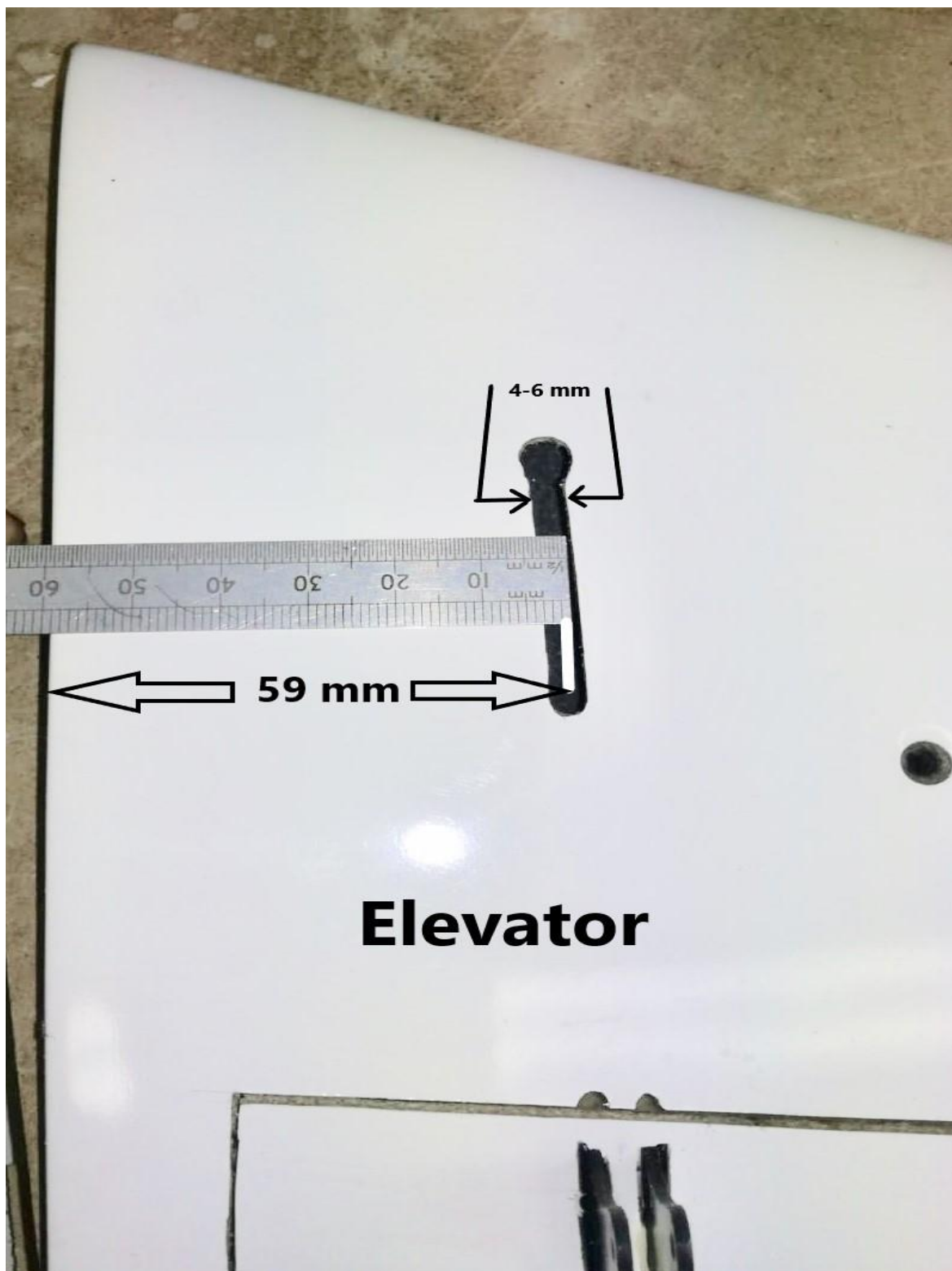
ULTIMATUM2.0



ULTIMATUM2.0



ULTIMATUM2.0



Elevator

ULTIMATUM2.0

LINKAGES SIZE (Optional accessories)

- Elevator: 83 mm (center to center) 2 pcs. necessary
- Rudder: 77 mm (center to center) 1 pcs. necessary
- Aileron: 108 mm (center to center) 2 pcs. necessary
- Flaps: 94 mm (center to center) 2 pcs. necessary

All reflected values are a recommendation



SERVO ARMS (Optional accessories)

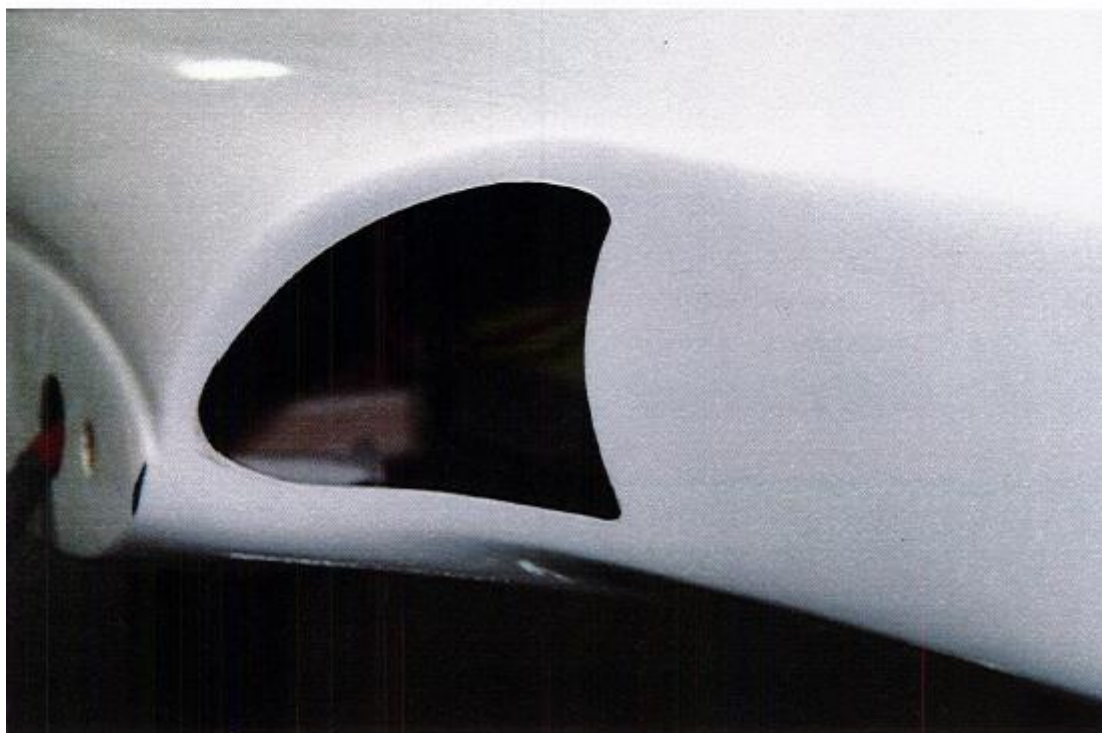
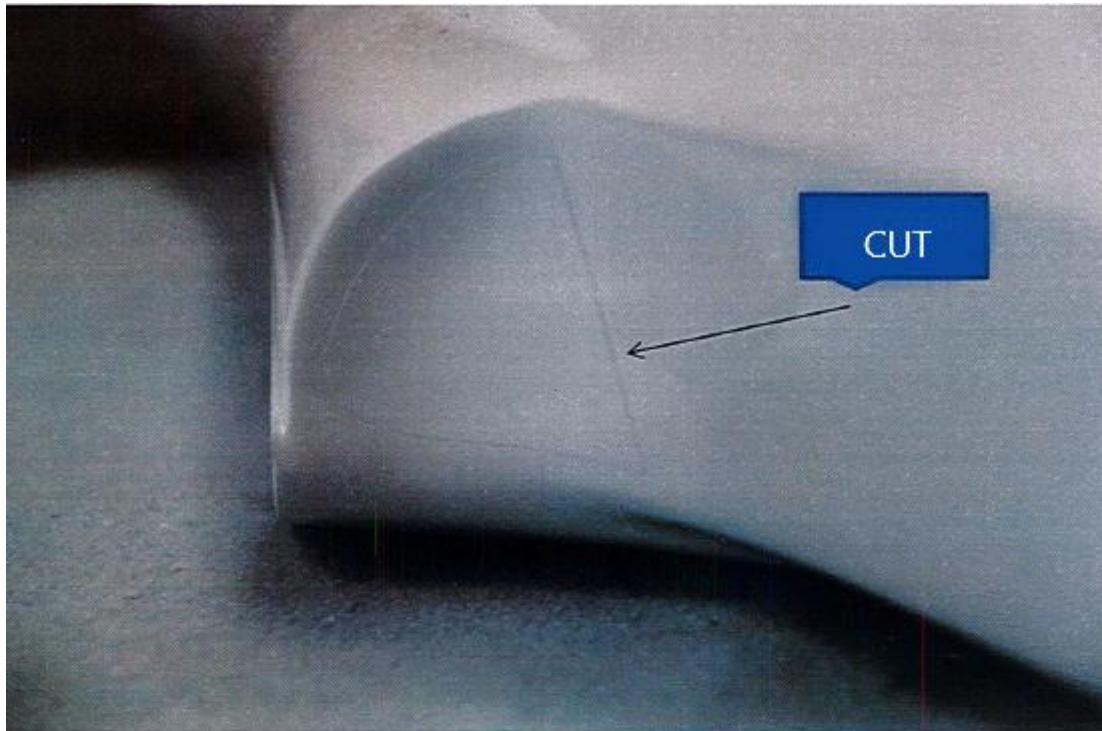
- Elevator: 19 mm / 2 pcs. necessary
- Rudder: 19.5 mm / 1 pcs. necessary
- Aileron: 19 mm / 2 pcs. necessary
- Flaps: 10 mm / 2 pcs. necessary

Servos: Recommended Hitec HS-7954SH or similar (min. 20Kg torque)

All reflected values are a recommendation

ULTIMATUM2.0

CUT INLETS (Option)



All reflected values are a recommendation