

R227



Energy
Management

Brass housing for holding the thermometer

Datasheet
1105EN 10/2022



INAIL

Brass housing for holding the INAIL sample thermometer during inspections.
INAIL (I.S.P.E.S.L.) compliant.

➤ Versions and product codes

PRODUCT CODE	CONNECTION	HOUSING LENGTH [mm]
R227Y001	G 1/2"M	45
R227Y010	G 1/2"M	100

➤ Technical data

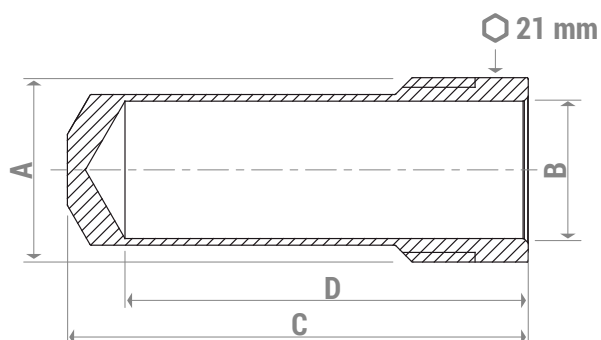
Performances and main features

- Max. working temperatura: 120 °C
- Max. working pressure: 16 bar
- INAIL (I.S.P.E.S.L.) compliant

Materials

- Housing: brass

➤ Dimensions



PRODUCT CODE	CONNECTION A	B [mm]	C [mm]	D [mm]
R227Y001	G 1/2"M	15,5	52	45
R227Y010	G 1/2"M	15,5	107	100

➤ Product specifications

R227

Brass housing for holding the thermometer during INAIL inspections. G 1/2"M connection. Max. working temperature 120 °C. Max. working pressure 16 bar. Available with housing length 45 or 100 mm. INAIL (I.S.P.E.S.L.) compliant.

⚠ Safety Warning. Installation, commissioning and periodical maintenance of the product must be carried out by qualified operators in compliance with national regulations and/or local standards. A qualified installer must take all required measures, including use of Individual Protection Devices, for his and others' safety. An improper installation may damage people, animals or objects towards which Giacomini S.p.A. may not be held liable.

♻ Package Disposal. Carton boxes: paper recycling. Plastic bags and bubble wrap: plastic recycling.

ℹ Additional information. For more information, go to giacomini.com or contact our technical assistance service. This document provides only general indications. Giacomini S.p.A. may change at any time, without notice and for technical or commercial reasons, the items included herewith. The information included in this technical sheet do not exempt the user from strictly complying with the rules and good practice standards in force.

🗑 Product Disposal. Do not dispose of product as municipal waste at the end of its life cycle. Dispose of product at a special recycling platform managed by local authorities or at retailers providing this type of service.