

# Retro<sup>®</sup> MANUFACTURING

www.retromanufacturing.com  
7470 Commercial Way  
Henderson, NV 89011  
702.483.2222

## Warranty

IMPORTANT: RetroPod™ products are designed to be modified to fit your particular mounting requirement, however, once modified, they are not covered by this warranty. Therefore, thoroughly check to make certain of speaker/vehicle fit prior to modification or installation.

This warranty does not cover normal wear and tear or cosmetic damage or lost speaker grilles. If your unmodified product does not work properly because of defects in materials or workmanship, Retro Manufacturing, LLC (collectively referred to as the "warranter") will repair or replace (at our option) for a period of One Year from date of original purchase as determined by the date on the sales receipt or other proof of purchase.

ITEM	WARRANTY
RetroPod™	1 Year

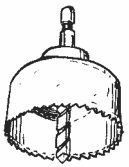
You may return your product prepaid during the warranty period. This warranty only applies to products purchased and serviced in the continental United States. This warranty is extended only to the original purchaser of a new product which was not sold "as is."

To handle warranty issues, contact us at tech@retromanufacturing.com or call 888.325.1555. All returns and warranty issues must be accompanied by a Return Authorization (RA) number along with a copy of your original purchase receipt. Any items sent to us without a RA number and copy of the receipt will be refused. Once an RA number is issued, send the product along with the original sales receipt to the address shown above.

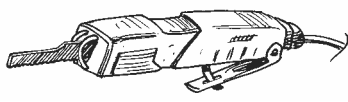
Copyright 2017 © Retro Manufacturing, LLC. Unauthorized reproduction prohibited. All rights reserved.

## Before You Begin

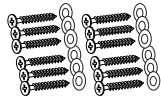
Always disconnect the battery before beginning. Avoid drilling through fuel lines, brake lines, hydraulic lines or electrical wiring. You will need the following mounting hardware (not included) and tools to install your RetroPod™ speaker pods. Always wear eye protection when using power tools.



Hole Saw



Air Saw



Sheet Metal Screws and Washers



Rotary Cutting Tool



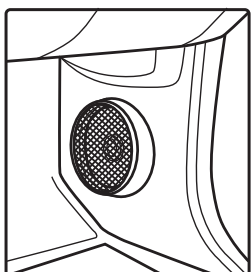
File

\*Due to continuing product improvement, hardware, specifications and features are subject to change without notice.

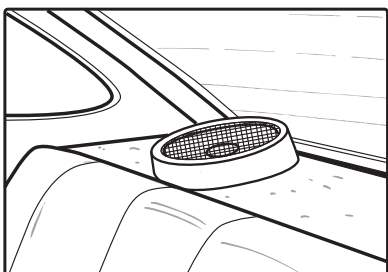
## Finding a Mounting Location for Your RetroPod™ Speaker Pods

RetroPod™ allows you to mount speakers onto most surfaces in your vehicle where speakers normally cannot be installed. Below are some examples of common RetroPod™ installations.

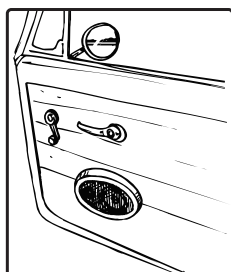
These illustrations are examples only. Your vehicle may have different mounting requirements.



Kick-Panel



Package Tray



Door Panel

IMPORTANT: Once modified, RetroPod™ products are not eligible for return. Check thoroughly prior to modification or installation.

# RetroPod™

## BASIC INSTALLATION GUIDELINES



The information enclosed in this installation guide is to be used as merely a general outline to assist you during the process of installation. This guide does not cover every installation possibility, vehicle or every aspect of the installation process.

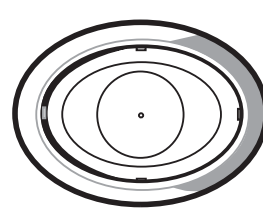
Retro Manufacturing, LLC, or its subsidiaries assume no responsibility for proper or improper installation. Every attempt as been made to make this installation guide as informative as possible. This guide may be updated from time to time, and specifications are subject to change without notice. Please check our website for the latest updates.

Version 2

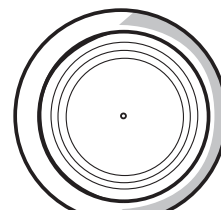
## Modifying Your RetroPod™ Speaker Pods

Once you've chosen your mounting location, you will need to modify your pods to fit your speakers. All RetroPod™ speaker pods have etched cutting grooves at various speaker sizes that help accommodate cutting out the speaker openings.

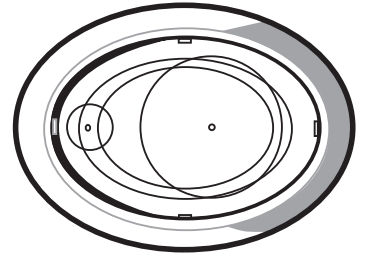
Use extreme caution before modifying your speaker pods. Once they have been modified, they will no longer be warrantied and cannot be returned.



RPOD4  
Precut guides for 4" and 4" x 6"  
speakers

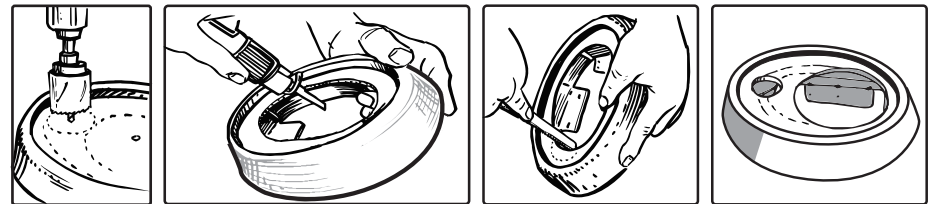


RPOD6  
Precut guides for 5.25",  
6" and 6.5" speakers



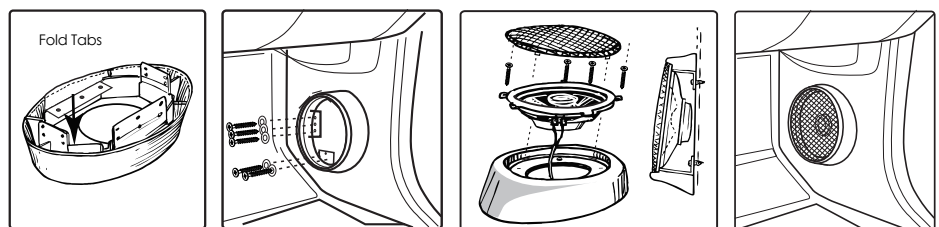
RPOD9  
Precut guides for 6.5" component kit, 4" x 8"  
and 6" x 9" speakers

Use a hole saw, air saw or rotary cutting tool to cut your speaker hole. Do not cut directly along the channel line. Instead, allow some extra material to ensure a tight fit. Test fit the speaker, and use a file to trim and smooth the excess plastic and ensure the best fit.



## Mounting Your RetroPod™ Speaker Pods

Before mounting your speaker pods, make sure the area behind the mounting points are free of any electrical wires, fuel lines, brake lines, exhaust components or hoses.

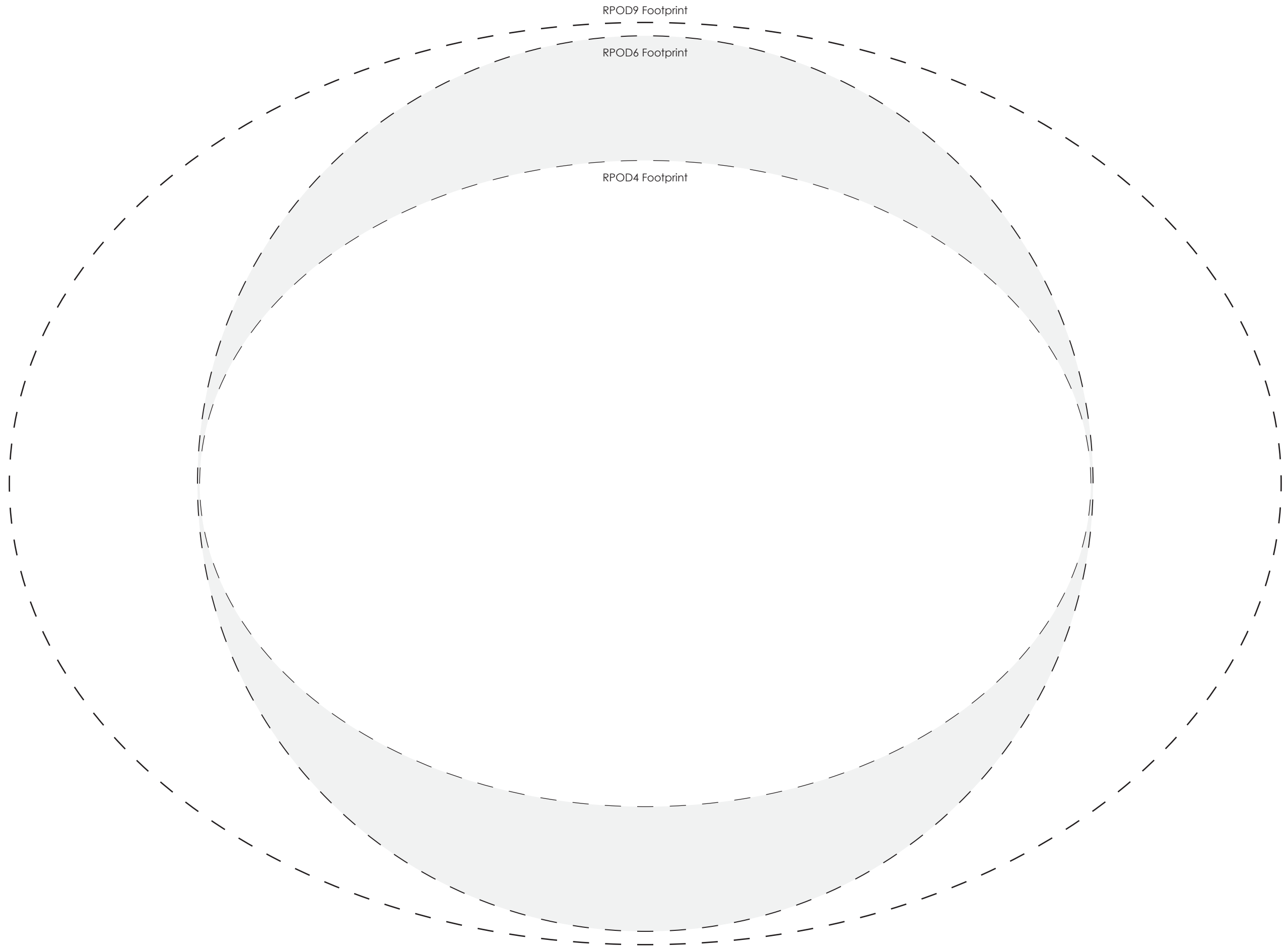


Start by folding all 4 mounting tabs to prepare your RetroPod™ for mounting

Use sheet metal screws and washers (not included) to mount your RetroPod™ to the desired location

Drill holes in the mounting surface for the speaker wiring. Run the wires through the hole, connect them to your speaker, and mount the speaker to the pod using sheet metal screws and washers.

Finished installation (kick-panel shown)



RPOD9 Footprint

RPOD6 Footprint

RPOD4 Footprint