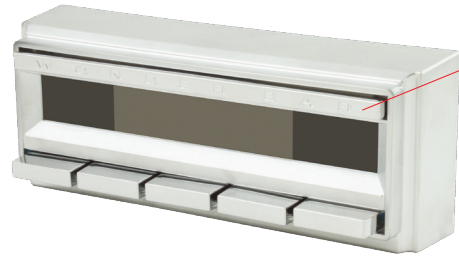


# W O N D E R B A R™

## WB-1 RADIO FACE QUICK START GUIDE

### WHAT'S IN THE BOX



**Wonder Bar™ Radio Face**

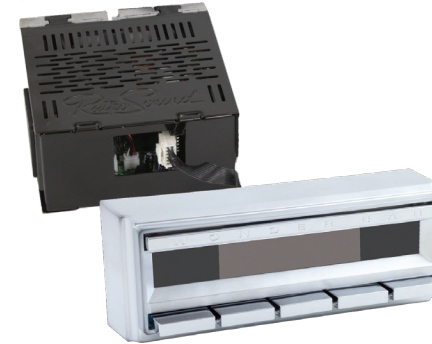
(The face in your box may look different than the one pictured)



**InfiniMount™ Spacers**

The Wonder Bar™ on your radio functions as a seek on SiriusXM or tuner mode and will skip tracks, rewind and fast-forward in USB or Bluetooth® playback modes.

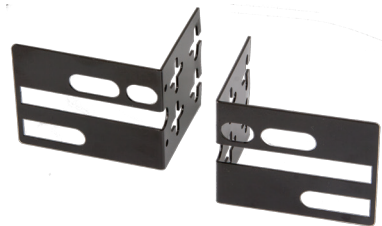
### CONNECTING THE FACE TO THE BODY



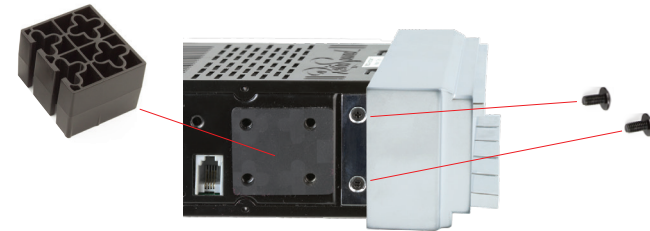
Connect the ribbon cable included with the radio body to the Wonder Bar™ face.  
(Do not force the connector)



**Two Shafts**



**InfiniMount™ Brackets**



Attach the Wonder Bar™ face to the radio body using the radio face mounting screws included (these screws are very small. Be careful not to lose them), then attach the InfiniMount™ Spacers to the mounts on the side of the radio body.



**Shaft Nuts and Washers**



**Radio Face Mounting Screws**

(These are very small and are located in the hardware bag)



Complete the installation as described in the user's manual included in the Motor Box.