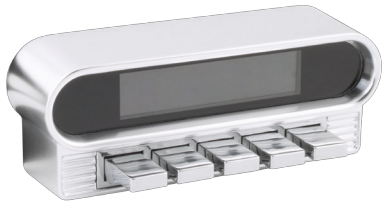


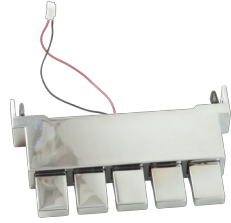
# Monterey

## RADIO FACE QUICK START GUIDE

### WHAT'S IN THE BOX



**Monterey Radio Face**



**Push-Buttons**



**Two Shafts**



**InfiniMount™ Brackets**



**Shaft Nuts and Washers**



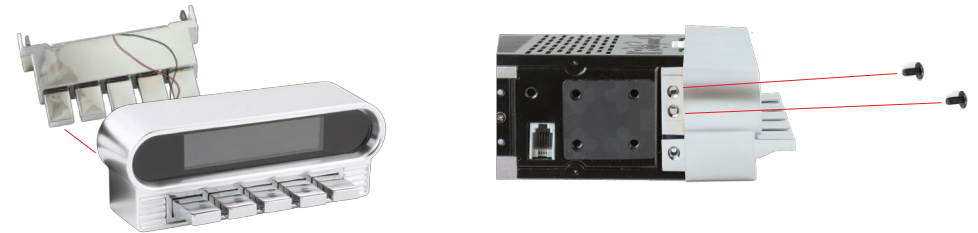
**Radio Face and Push-Button Mounting Screws**

(These are very small and are located in the hardware bag)

### CONNECTING THE FACE TO THE BODY



Connect the ribbon cable included with the radio body to the Monterey face, and connect the cable on the push-buttons to the Monterey face. (Do not force the connector)



Insert the push-buttons through the openings beneath the display of the Monterey face, then mount them using the included screws. Mount the face to the radio body using the mounting screws included. (These screws are very small. Be careful not to lose them)



Complete the installation as described in the user's manual included in the Motor Box.