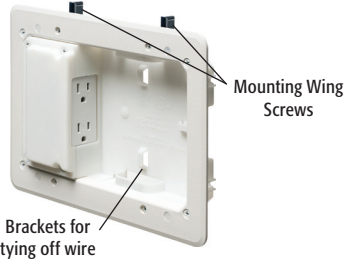


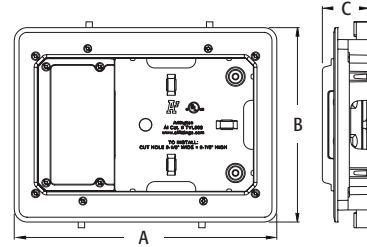
Low Profile TV BOX™



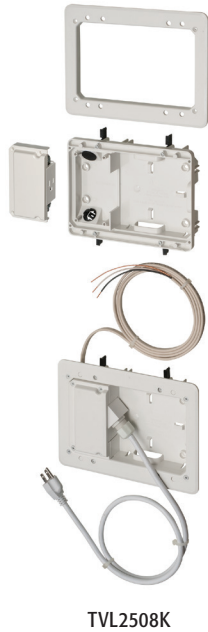
For flush-to-the-wall tv installations on walls as shallow as 3/4". Non-metallic. Plugs stay inside box so TV mounts closer to the wall. Mounting wing screws hold box securely in the wall. For new work or retrofit.

CATALOG NUMBER	UPC/DCI/NAED MFG #018997	DESCRIPTION	UNIT PKG	STD PKG	DIM A	DIM B	DIM C
TVL508	52307	5" x 8" power and/or low voltage box	1	4	10.210	7.561	1.852

Add suffix "GC" to Catalog # when ordering in Canada to include grounding clip, for example TVL508GC. **PATENTED.**



Low Profile TV BOX™ Kit



For flush-to-the-wall tv installations on walls as shallow as 3/4". For new work or retrofit.

FEATURES AND BENEFITS

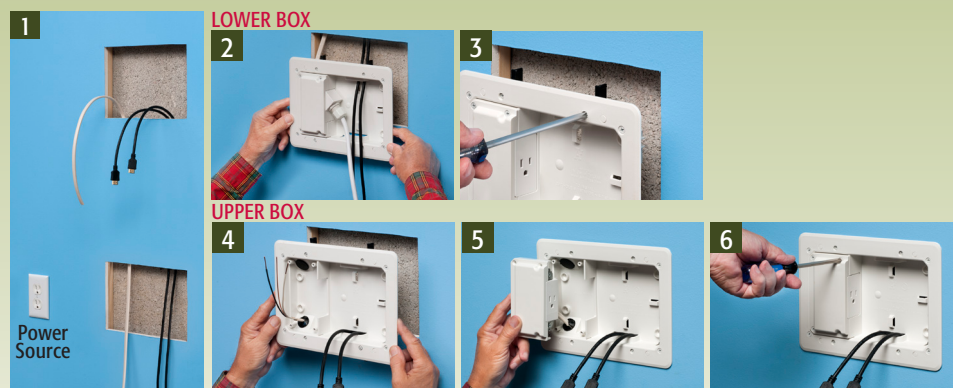
- Plugs stay inside upper box so TV mounts closer to the wall
- Mounting wing screws hold box securely in the wall
- Applications in new work or retrofit include furring strips on concrete block walls, and 2x2, 2x3 and 2x4 or larger studs
- Kit includes all you need to install a flat screen TV close to a wall & connect to additional components

CATALOG NUMBER	UPC/DCI/NAED MFG #018997	DESCRIPTION	UNIT PKG	STD PKG
TVL2508K	52305	5" x 8" power/ low voltage recessed TV Bridge Kit	1	1

Add suffix "GC" to Catalog # when ordering in Canada to include grounding clip, for example TVL2508KGC. **PATENTED.**



INSTALLATION INSTRUCTIONS



1. After locating position of TV and installing mounting bracket, cut holes for upper and lower boxes in a clear space within the same stud bay.
2. Position lower box so that supplied cord reaches existing receptacle (or power conditioner). Feed NM cable connector from lower box. behind the wall, to upper box opening. Low voltage cable and speaker wire may also be pulled at this time.
3. Install box/power cord assembly by tightening four wing screws.
4. Install trim plate. Pull NM cable through connector. Install box in hole by tightening wing screws (see 3).
5. Attach electrical receptacle to receptacle mounting bracket.
6. Attach receptacle mounting bracket to box.

Scan For Video

