



Parts in the box

Latch "B" is not included. If needed, please contact Kwikset to order a drive-in latch for your lock.	Interior Assembly Traditional Contemporary 		Exterior Assembly Traditional Contemporary 	
	Mounting Plate 	Batteries 	Keys 	SmartKey tool
Strike 	Cylinder 			

ENGLISH

Signature Series Deadbolt with Home Connect

Installation and User Guide

Required tools

Ruler Phillips head screwdriver

Additional Tools (depending on application)

Hammer Wood block

Kwikset
1-866-863-6584
www.kwikset.com

1 Prepare the door and check dimensions

If drilling a new door, use the supplied template and the complete door drilling instructions available at www.kwikset.com/doorprep.

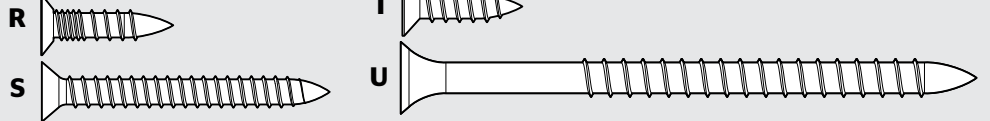
<p>A Measure to confirm that the hole in the door is either 2-1/8" (54 mm) or 1-1/2" (38 mm).</p>	<p>B Measure to confirm that the backset is either 2-3/8" or 2-3/4" (60 or 70 mm).</p>	<p>C Measure to confirm that the hole in the door edge is 1" (25 mm).</p>	<p>D Measure to confirm that the door is between 1-3/8" and 1-3/4"* (35 mm and 44 mm*) thick.</p>
--	---	--	--

Note: Additional door preparation may be required for doors with 1-1/2" (38 mm) holes. Consult the deadbolt drilling instructions at www.kwikset.com/doorprep.

*Service kits for 2-1/4" (57 mm) thick doors are available through Kwikset.

2 Install the latch and strike

actual size



A Is the door edge chiseled?

YES Use latch "A". If the latch bolt is not already extended, extend the latch bolt as shown.

NO Use latch "B" (not included). If the latch bolt is not already extended, extend the latch bolt as shown.

B Hold the latch in front of the door hole, with the latch face flush against the door edge.

C Are the latch holes centered in the door hole?

YES No adjustment is required. Proceed to next step.

NO Rotate latch face as shown to extend latch.

D Which latch are you installing?

Latch "A" or **Latch "B"**

E Install strike on the door frame.

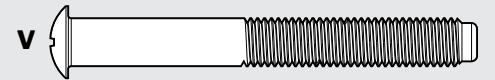
⚠ Make sure the hole in the door frame is drilled a minimum of 1" (25 mm) deep.

Longer screws install closest to the door jamb.

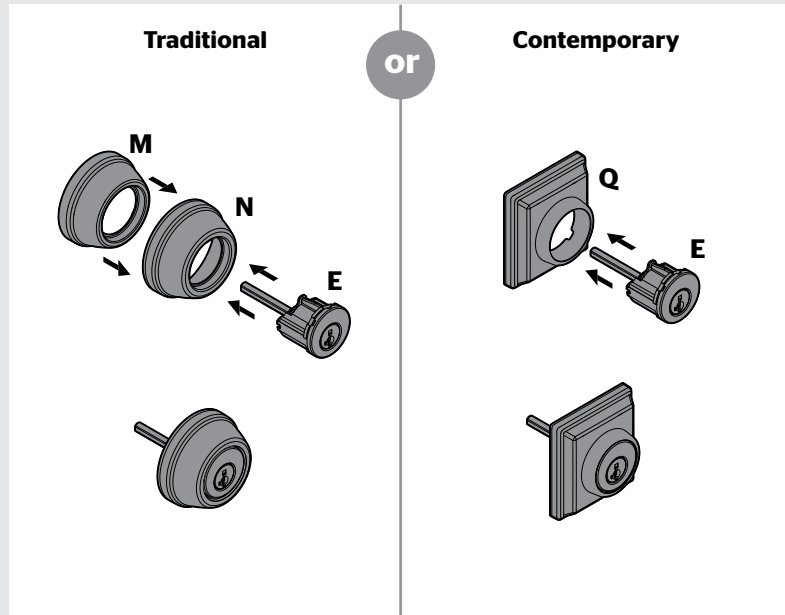
U (2x)
T (2x)
door frame

3 Install the exterior assembly and mounting plate

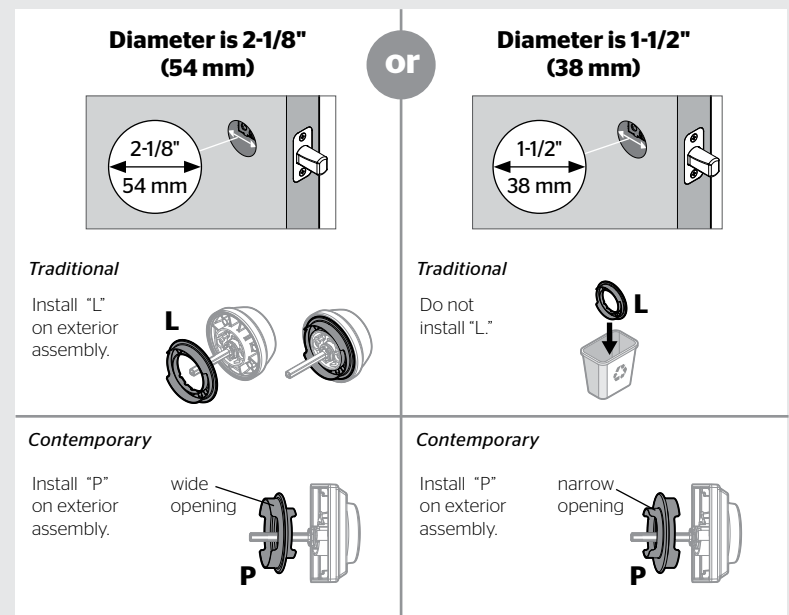
actual size



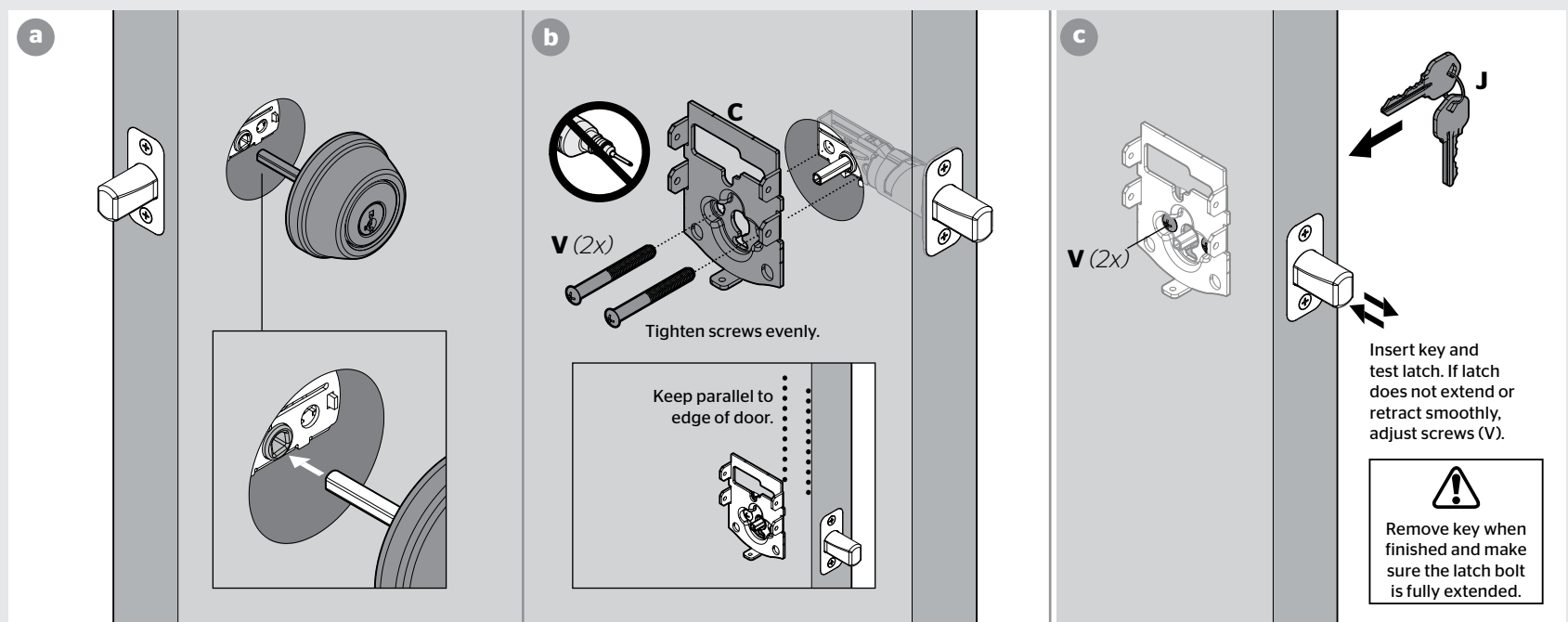
A Install cylinder in exterior assembly.



B What is the diameter of the hole in the door?

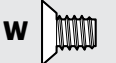


C Install exterior assembly and mounting plate.

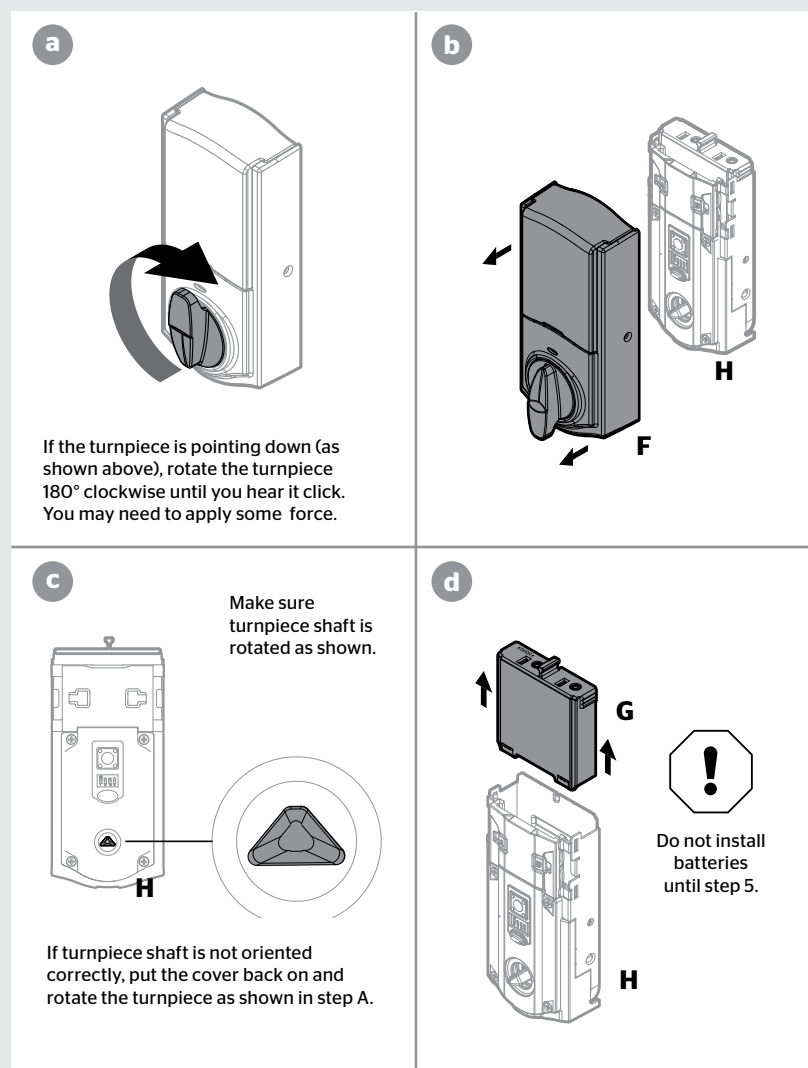


4 Install the interior assembly

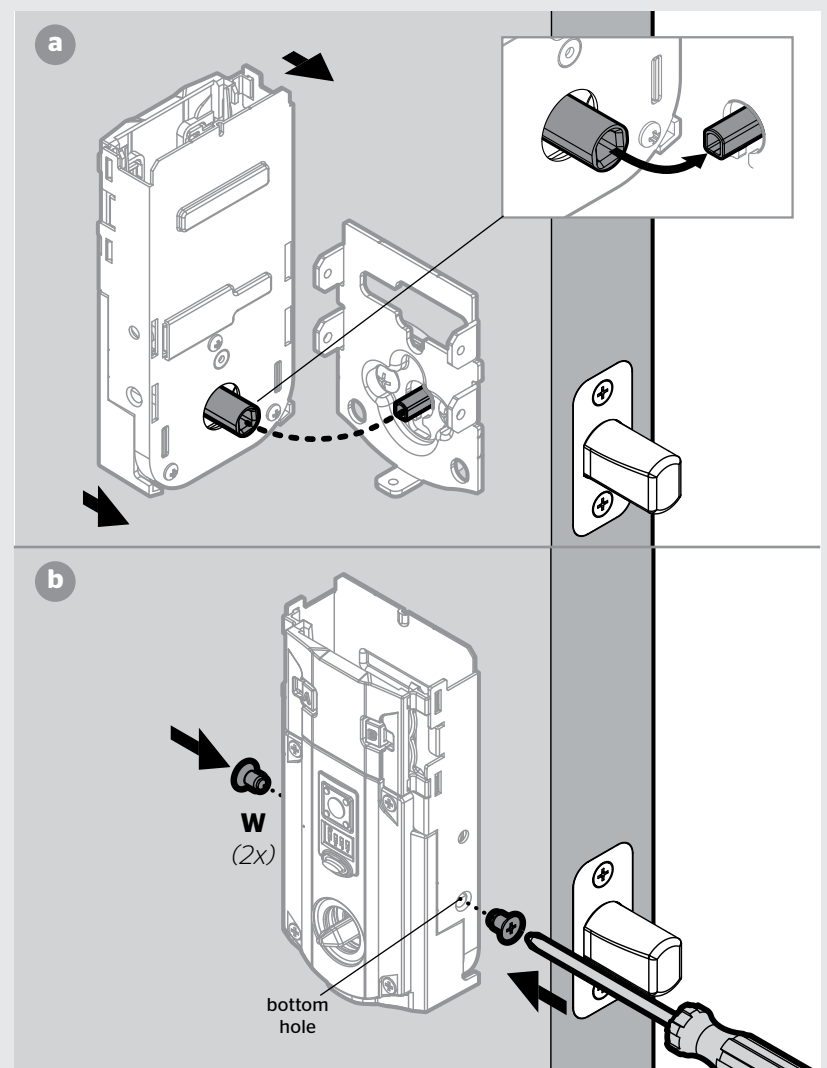
actual size



A Remove battery cover and battery pack from interior assembly.



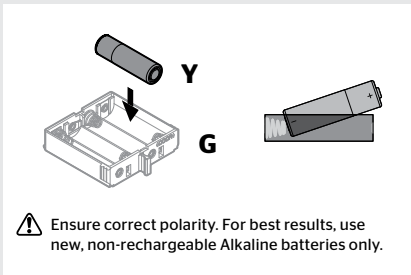
B Install interior assembly onto mounting plate.



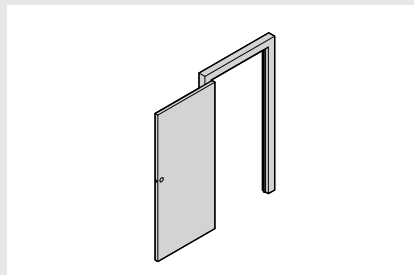
5 Set locking and unlocking direction

This step will teach your lock the orientation of your door and is crucial to lock operation.

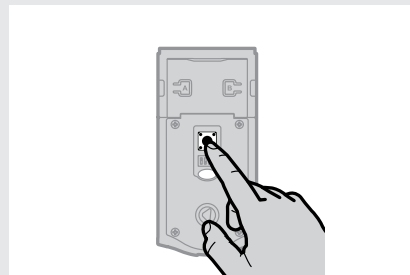
A Install 4 AA batteries in battery pack.



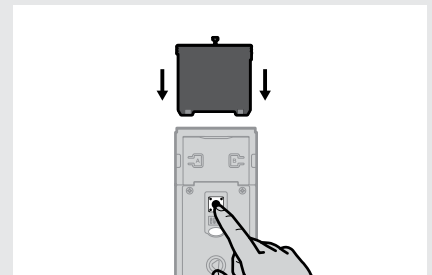
B Make sure the door is open.



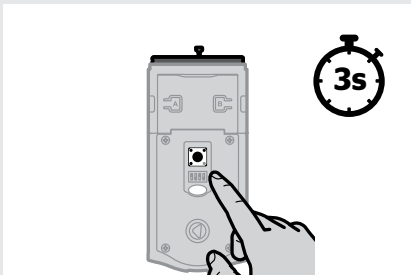
C Press and hold the Program button. Do not release.



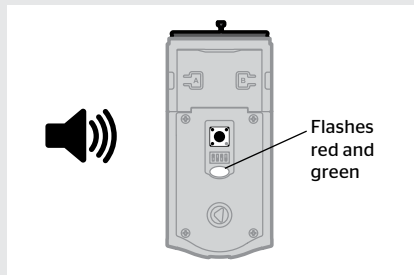
D Insert the battery pack and continue holding the Program button.



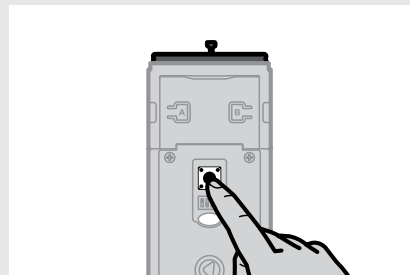
E After 3 seconds, release the Program button.



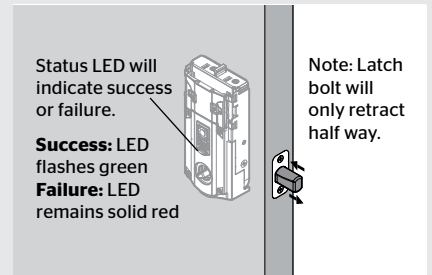
F You will hear the lock beep and the LED will flash red and green.



G Press and release the Program button again.



H The latch bolt will retract and extend on its own to learn the locking and unlocking direction of the door.

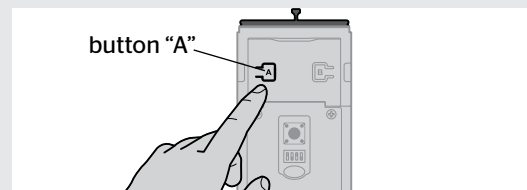


6 Add the lock to your smart home system

A Initiate the process to add the lock to your system at your smart home controller.

Refer to your smart home system instructions for more information.

B When prompted by your smart home system to add the lock, press button "A" on the lock interior one time. The red LED will illuminate when the lock enters Add Mode.



Please allow time for the controller to add the lock.

C If successful, re-name the lock in your system (if applicable).

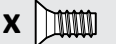
D If unsuccessful, follow your system's instructions to remove the lock from the controller and any other network, then press button "A" on the lock one time.

Perform steps 6A-6C again.

If still unsuccessful, consult the Programming and Troubleshooting Guide, available on the "Deadbolt with Home Connect" page at kwikset.com/wirelesslocks.

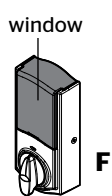
7 Install the interior cover

actual size

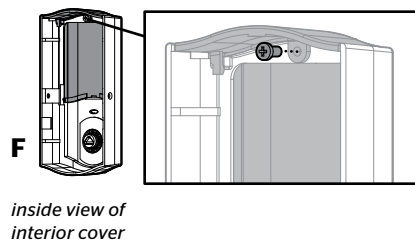


Important Information about the interior cover

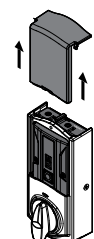
The window on the interior cover is locked by default to prevent someone from tampering with your lock's settings.



For easy access to the battery pack, unlock the window by removing the security screw.



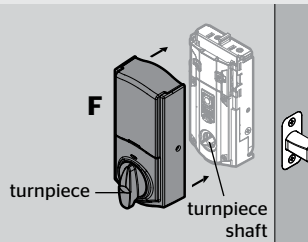
You can now slide up the window for more convenient access to the programming buttons and the battery pack while the cover is installed.



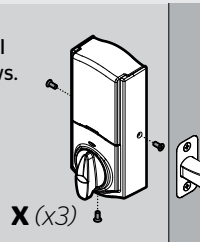
Cover Installation

a Install cover.

Note: You may need to rotate the turnpiece to align with the turnpiece shaft.



b Install screws.



Battery Pack Access

If the window is unlocked, slide up the window to access the battery pack.

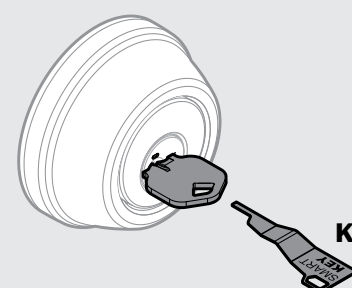
If the window is locked, remove the interior cover and screws to access the battery pack.



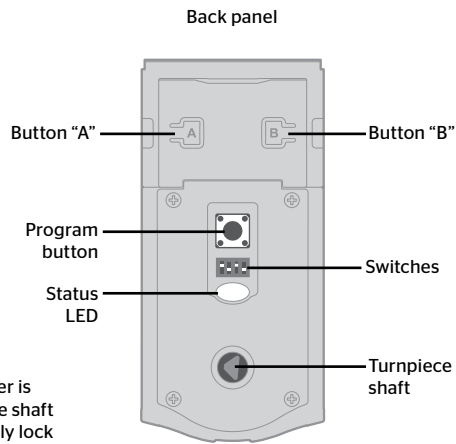
8 Optional: Re-key deadbolt (if needed)

Re-key the lock to work with your existing key. See the supplied SmartKey Re-key instructions for more information.

Note: If Auto-Lock is enabled (see "Switches and Status LED Colors"), remove the battery pack before re-keying your lock.



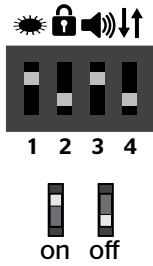
Deadbolt Interior at a Glance



Note: When the cover is removed, the turnpiece shaft can be used to manually lock and unlock the door.

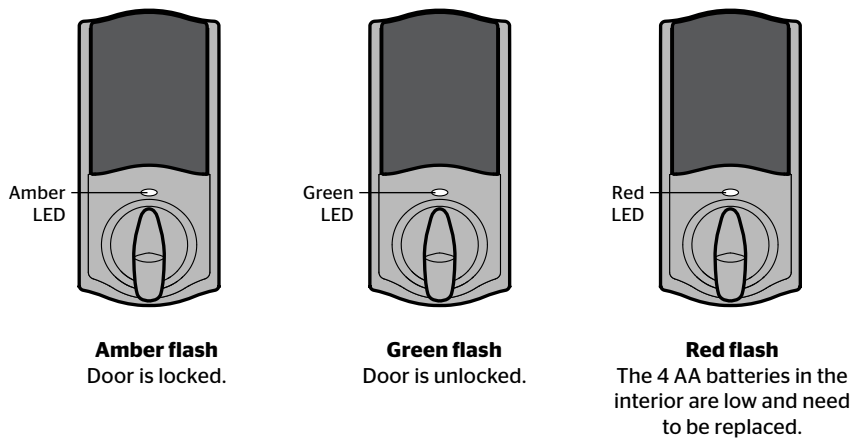
Switches

These features can be adjusted in some smart home apps.




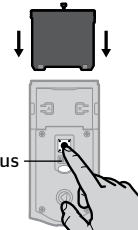
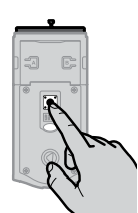
- 1. Status LED**
Door lock status LED blinks every 6 seconds. ON position is factory default.
- 2. Auto-Lock** ⚠️
Automatically re-locks door 30 seconds after unlocking. OFF position is factory default.
⚠️ CAUTION: With this feature enabled, it is possible to lock yourself outside.
- 3. Audio**
Beeping sound is heard during programming and normal operation. ON position is factory default.
- 4. Invert** ⚠️
Only used if the Status LED is communicating the opposite door lock status.

Status LED Notifications



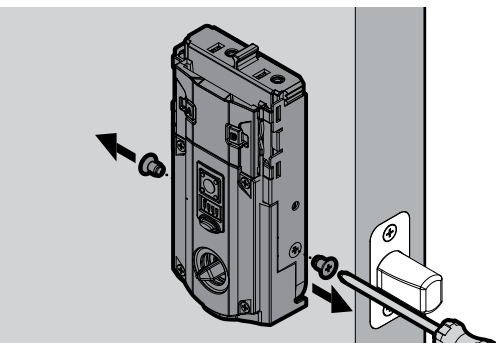
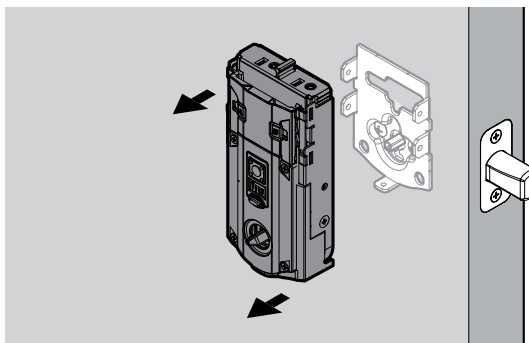
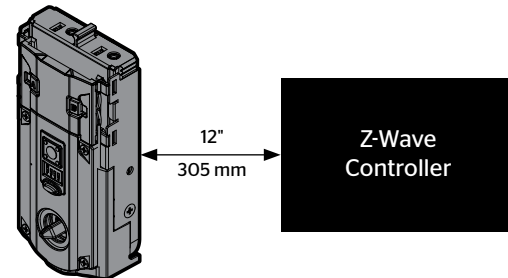
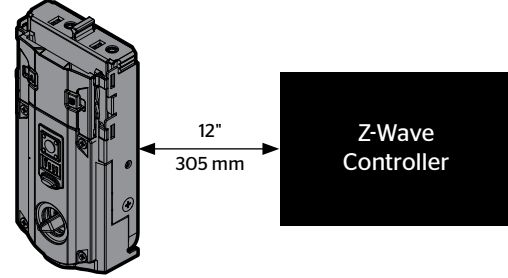
Factory Reset

A factory reset will remove the lock from your smart home system.

- Remove battery pack. 
- Press and HOLD the Program button while reinserting the battery pack. Keep holding the button for 30 seconds until the lock beeps and the status LED flashes red. 
- Press the Program button once more. When the LED flashes green and you hear two beeps, the lock has been reset. 
- Perform the door handing process again to teach the lock the orientation of the door, and pair the lock with your smart home system.

Troubleshooting: Adding the Lock to a Smart Home System

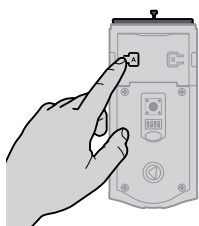
Some Z-Wave® systems require that the lock be within 12" of the controller during the adding process. If this is the case, follow the steps below to remove the lock interior from the door to perform the process closer to the controller:

- Remove the small screws that secure the interior assembly to the mounting plate. 
- Remove the interior assembly from the door. 
- Hold the interior assembly a maximum of 12" (305 mm) from your smart home controller for the rest of this process. 
- Initiate the process to add the lock to your system at your smart home controller. Refer to your smart home system instructions for more information.
- When prompted by your smart home system to add the lock, press button "A" on the lock interior one time. The red LED will illuminate when the lock enters Add Mode. 
Please allow time for the controller to add the lock.
- Once successful, re-name the lock in your system (if applicable). Then, reinstall the lock interior on the interior assembly.

Network Information

Removing the lock from the network

Follow your smart home system's instructions to remove the lock from the network. When prompted by the system, press button "A" on the lock interior once.



Important Safeguards

- Read all instructions in their entirety.
- Familiarize yourself with all warning and caution statements.
- Remind all family members of safety precautions.
- Restrict access to your lock's back panel and routinely check your settings to ensure they have not been altered without your knowledge.
- Dispose of used batteries according to local laws and regulations.

⚠️ CAUTION: Prevent unauthorized entry. Restrict access to your lock's back panel and routinely check your settings to ensure they have not been altered without your knowledge.

⚠️ WARNING: This Manufacturer advises that no lock can provide complete security by itself. This lock may be defeated by forcible or technical means, or evaded by entry elsewhere on the property. No lock can substitute for caution, awareness of your environment, and common sense. Builder's hardware is available in multiple performance grades to suit the application. In order to enhance security and reduce risk, you should consult a qualified locksmith or other security professional.

Z-Wave System Notes

This product is a security enabled Z-Wave Plus product and must be used with a Security Enabled Z-Wave controller to be fully utilized. Z-Wave is a "Wireless mesh network," and results may vary based on building construction and communication path.

To assure interoperability, each Z-Wave product must pass a stringent conformance test to assure that it meets the Z-Wave standard for complete compliance with all other devices and controls. The Z-Wave identity mark assures consumers, integrators, dealers and manufacturers that their products will reliably perform with any other Z-Wave device. And, regardless of the vendor, always powered nodes may act as a repeater for Kwikset/Weiser/Baldwin products.

Z-Wave Configuration and Association Parameters are available on the Signature Series Deadbolt with Home Connect (2nd Gen.) page at www.kwikset.com.