

LED LINEAR GLASS TUBE

4ft 18W Ballast Compatible (UL Type A)

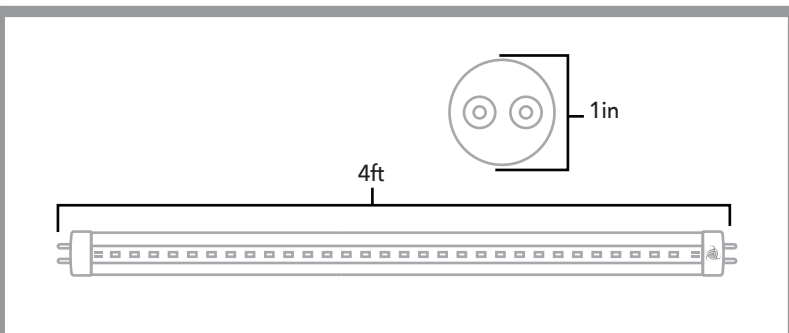
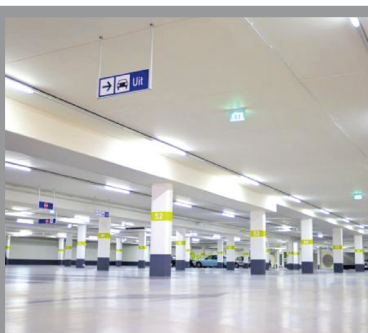
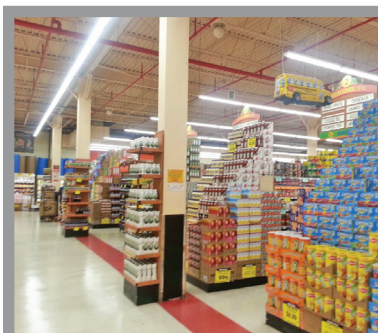
The LED T8 Glass Tube operates as a Plug and Play Tube which means no rewiring is required. Simply remove the current fluorescent tube (check ballast compatibility list) and replace with the Plug N Play tubes. These Glass T8 Tubes are energy efficient and provide energy savings of 70% or more. With its high efficiency, this T8 Tube produces 100 Lumens per Watt. Additionally, the T8 Tubes are Eco-Friendly LED lights which do not emit UV or IR Radiation. Furthermore, the T8 Glass Tubes are Mercury Free and provide 50,000 hours or more of working bulb light. Our Glass Tubes are UL Listed and come with a 3 year warranty.

Common Applications

- Commercial Buildings
- Super Markets
- Factories
- Hotels
- Conference Rooms
- Schools
- Office Buildings

WARRANTY

This product has a warranty for a period of 3 years from the date of purchase. The warranty is invalid in the case of improper installation, tampering, or removal of the Q.C. date label. Installation in an improper working environment or installation not according to the current edition of the National Electric Code also invalidates the warranty. Should this product fail during the warranty period, it will be replaced free of charge, subject to correct installation and return of the faulty unit. Greentek Energy Systems does not accept responsibility for any installation costs associated with the replacement of this product. This warranty is in addition to the statutory rights in the country of purchase. Greentek Energy Systems reserves the right to alter specifications without prior notice.



SKU	GT-T8GA418M-40-B GT-T8GA418M-50-B	CRI	> 80	Lifespan	50,000 hours
Qualification	UL Listed	Ambient temperature	-4°F - +113°F	Lumens	1800
Power	18W	Input Voltage	AC120-277V	Lumens Per Watt (LPW)	100LPW
Color	4000K, 5000K	Power Factor	≥ 0.90	Beam Angle (°)	>220°

LED LINEAR GLASS TUBE

4ft 18W Ballast Compatible (UL Type A)

Warranty	3 years	Trim	Clear, Frosted
Base Type	G13	Wiring	Dual End
Materials	Glass		
IP Rating	IP20		

Operation and Maintenance Tips

- Store and use the lamps as same as standard fluorescent lamps
- Lamps should be kept free from contamination
- Switch off mains supply before installing/removing lamp
- Good condition of the lamp-holder contacts is important to ensure proper operation of lamp
- Use in fully enclosed fixtures may affect life performance
- Not for use in emergency lighting circuits

