

LED VERSA TUBE

Works with or without a ballast

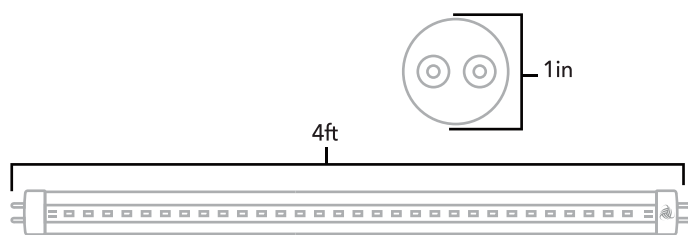
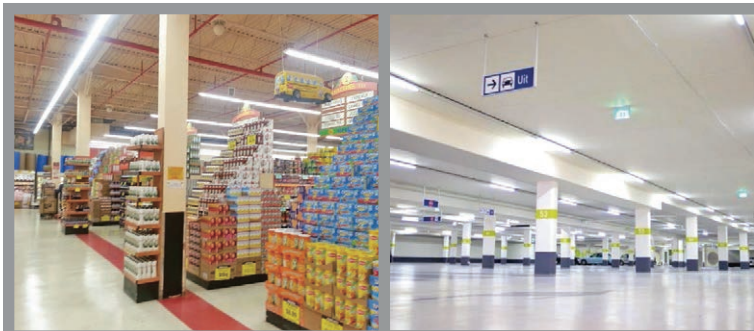
The LED Versa Tube serves as a special energy efficient replacement for all traditional fluorescent T8 lamps. Designed to operate on all existing rapid-start, programmed-start, and emergency fixture ballasts... or simply **no ballast** at all.

FEATURES

- Works both with or without a ballast
- Works both with shunted or non-shunted sockets
- Fantastic replacement "plug and play" tube or retrofit kit
- Compatible with over 90% of all North American electronic ballasts
- Versatility supports massive projects with different types of ballasts
- Suitable for damp or dry environments
- Minimize labor and recycling costs
- Stable lumen output for different ballast brands with different ballast factors
- UL Type A&B
- 5 Year Manufacturer's Warranty

WARRANTY

This product has a warranty for a period of 5 years from the date of purchase. The warranty is invalid in the case of improper installation, tampering, or removal of the Q.C. date label. Installation in an improper working environment or installation not according to the current edition of the National Electric Code also invalidates the warranty. Should this product fail during the warranty period, it will be replaced free of charge, subject to correct installation and return of the faulty unit. Greentek Energy Systems does not accept responsibility for any installation costs associated with the replacement of this product. This warranty is in addition to the statutory rights in the country of purchase. Greentek Energy Systems reserves the right to alter specifications without prior notice.



SKU	GT-T8-GVAB210X-XX GT-T8-GVAB412X-XX GT-T8-GVAB415X-XX GT-T8-GVAB418X-XX	Color	3000K,3500K,4000K, 4500K,5000K	Power Factor	≥ 0.90
		CRI	> 80	Lifespan	50,000 hours
Qualification	UL, DLC Listed	Ambient temperature	-4°F - +113°F	Lumens	2312
Power	18W	Input Voltage	depends on ballast or AC120-277V	Lumens Per Watt (LPW)	120-130LPW

Suffix "X" can be "T" or "M" which denotes type of lamp tube. "T" denotes Transparent Lamp Tube, "M" denotes Milky Lamp Tube. Suffix "XX" can be two characters which denotes color temperature (CCT) (e.g. "30"=3000K).



LED LINEAR GLASS TUBE

4ft 18W Ballast Compatible & Single End Bypass- (UL+DLC)

Beam Angle (°)	>220°	IP Rating	IP20
Warranty	5 years	Trim	Clear, Frosted
Base Type	G13		
Materials	Glass		

Operation and Maintenance Tips

- Store and use the lamps as same as standard fluorescent lamps
- Lamps should be kept free from contamination
- Switch off mains supply before installing/removing lamp
- Good condition of the lamp-holder contacts is important to ensure proper operation of lamp
- Use in fully enclosed fixtures may affect life performance
- Not for use in emergency lighting circuits

