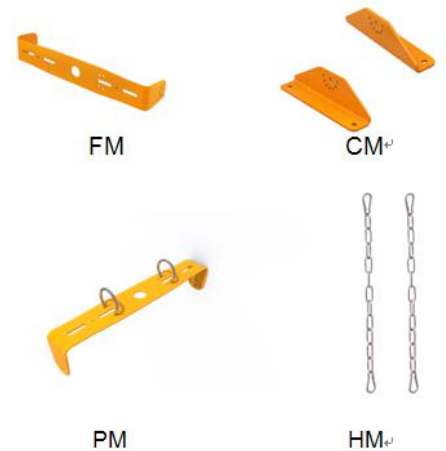




**NAME: Hazardous Location LED Linear Light**

**P/N: GT-EP-S1-120WXYZD1-abcd**

- Note: 1. The Letter **GT** in P/N stands for Company name.  
 2. The Letter **EP-S1** in P/N stands for Product series, Hazardous Location LED Linear Light.  
 3. The Letter **120W** in P/N stands for Rating Power.  
 4. The Letter **C** in P/N stands for Seoul LED manufacturing plant.  
 5. The Letter **S8** in P/N stands for 80-degree light-emitting angle.  
 6. The Letter **D1** in P/N stands for input voltage 100-277VAC.  
 7. "a" can be any two letters to represent lamp colors.  
 8. "b" can be "FM", "CM", "TM", "PM", "HM" represent bracket type.  
 9. "c" can be "NPT" for 3/4" NPT threaded pipe wiring.  
 10. "d" can be any digits for CCT, such as 30=3000K, 40=4000K.



**Advantage:**

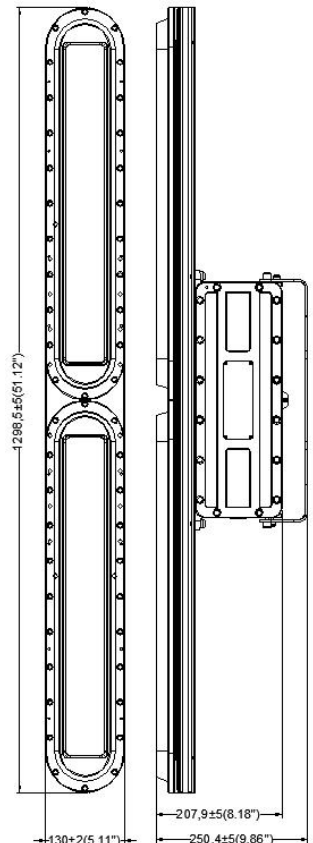
- UL cUL DLC certificate.
- IP66 driver, input voltage 100-277VAC.
- No UV or IR in the beam.
- Easy to install and operate.
- Energy saving, long lifespan.
- Light is soft and uniform, safe to eyes.
- Instant start, NO humming.
- Green and eco-friendly without mercury.

**CERTIFICATIONS:**

- CI D2 Groups A,B,C,D.T5
- UL 844.
- UL 1598.
- UL 8750.
- UL 1598A.
- CSA C22.2 No.137.0.
- CSA C22.2 No.250.0.
- CSA C22.2 No.250.13.
- DLC

**Application:**

- Warehouse, factory and workshops;
- Petroleum and petrochemical area, and gas station;
- Power, railway, ship port, public security, fire protection and other fields.



## Specifications

Optical							
Input Power (Tolerance : ±10%)	120W						
Color Temperature	3000K	3500K	4000K	4500K	5000K	5700K	6500K
Lumen (Tolerance : -10%)	14831 LM	15028 LM	15225 LM	15393 LM	15562 LM	15731 LM	16209 LM
Efficacy (Tolerance : -3%)	121 LM/W	123 LM/W	124 LM/W	126 LM/W	127 LM/W	128 LM/W	132 LM/W
CRI	>70						
Color Consistency	≤7 Steps (or ≤7SDCM)						
UGR	<28 (X=4H, Y=8H; S/H=1; Reflectances: 70%/50%/20%)						
Diffuser Type	Diffuser+ clear glass						
Beam Angle (50%) (Tolerance : ±15%)	80 Degree						
Electrical							
Input Voltage and Frequency	100-277VAC, 50/60Hz						
PF (Tolerance : -3%)	>0.9						
THD (Tolerance : +5%)	≤20%						
Driver Brand	China Brand Driver (SOSEN-SS-150VA-56BHL)						
Driver Surge protection	L/N-PE: 10kV, L-N: 6kV						
Materials							
LED Brand	Seoul						
LED Type	SMD 3030 (1.0W)						
LED QTY	288 PCS (120W)						
Housing	Aluminum						
Housing Color	Any Colors						
Explosion-proof Mark	North America: Class I, Division 2, Groups A, B, C, D, T5;						
Waterproof Rating	WET (IP66)						
Others							
Operating Temperature	-40°C TO 65°C						
Storage Temperature	-40°C TO 80°C						
Operating Humidity	10% - 90% RH						
Storage Humidity	10% - 95% RH						
Warranty	5 years warranty with 24/7 operating hours Luminaire lifetime at 25°C.						

## Light Distribution Testing Parameters

### Luminaire Property

Luminaire Manufacturer:  
 Luminaire Category:  
 Lamp Catalog:  
 Number of Lamps:  
 Luminous Length (mm):  
 Luminous Height (mm):  
 Current: 1.020 A  
 Power Factor: 0.997

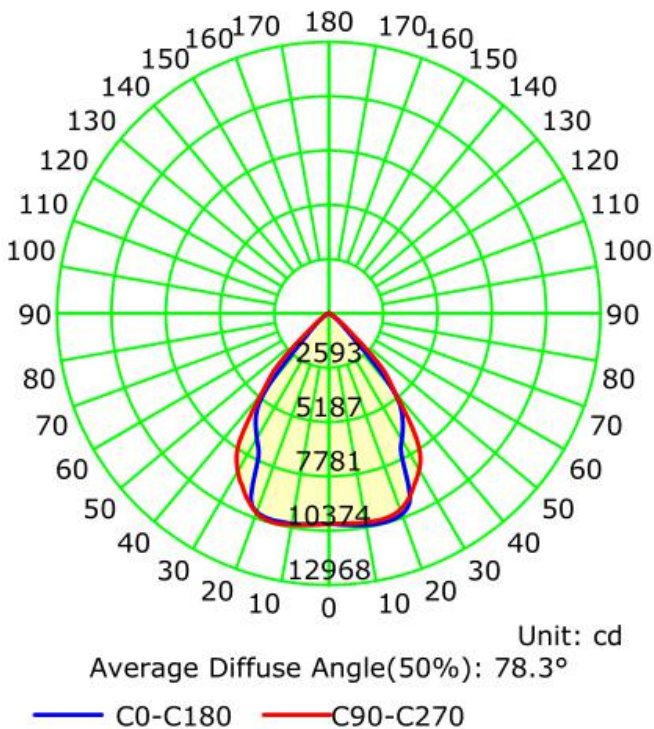
Luminaire Description:  
 Lamp Description:  
 Lumens per Lamp:  
 Luminous Width (mm):  
 Voltage: 120.0 V  
 Power: 122.03 W

### Photometric Results

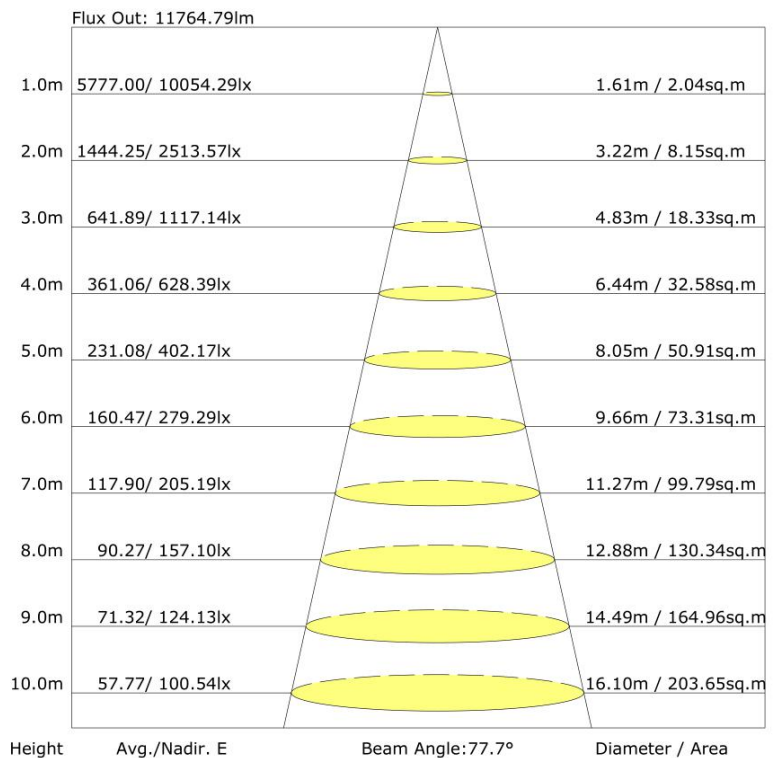
IES Classification: Type I  
 Total Rated Lamp Lumens: 14831.3 lm  
 Efficiency: 100%  
 Upward Ratio: 0%  
 C0r0 Intensity: 10054.29 cd  
 Pos of Max. Intensity: H315 V15

Longitudinal Classification: Very Short  
 Measurement Flux: 14831.3 lm  
 Downward Ratio: 100%  
 Luminaire Efficacy Rating (LER): 121.59  
 Max. Intensity: 10374.95 cd

Luminous Intensity Distribution Curve



The Average Illuminance Effective Figure



## Package

		Diffuser+ clear glass
Lamps Net Weight		16.62kg
Outer box	size	1410*220*305mm
	Qty/ Carton	1PCS
	Weight/Carton	19.50kg

Tolerance of Carton Size:  $\pm 15$  MM, Tolerance of Weight:  $\pm 10\%$ .

## Notice For User

- ◆ when installing the conduit, remove the compression nut on the screw thread of the lamp. Requirement of waterproof for fixture connection and requirement of conduit system connection should according to the local regulations.
- ◆ Please turn off power before install or change assembly parts.
- ◆ The input voltage and lamps should be matched, after connecting the power line, Please make sure the wiring section is insulated.
- ◆ No-professionals, must not install and disassemble the lamps.

## Trouble Shootings

Troubles	Check points
Flickering of the light	Turn off the power and turn on again in 3 minutes. If same phenomena occur, then call agencies.
Out of working	Please check the connection.