

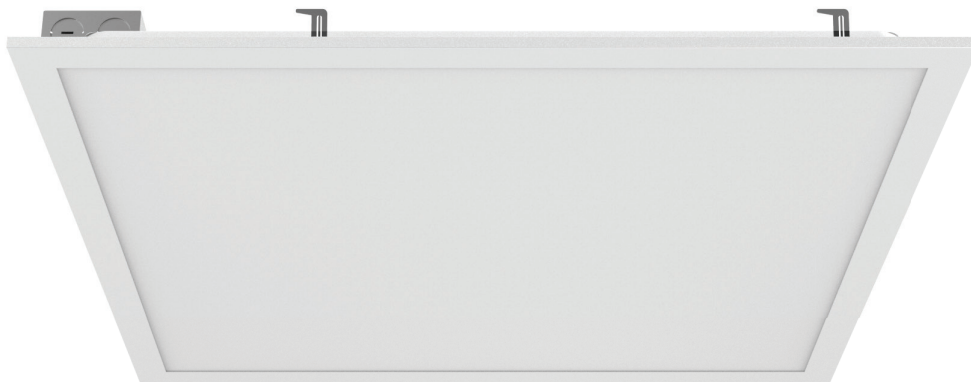
LED 2X2 LED PANEL LIGHT

40W

PART NO: GT-BP22-40W-ZZ-XX-YY@@

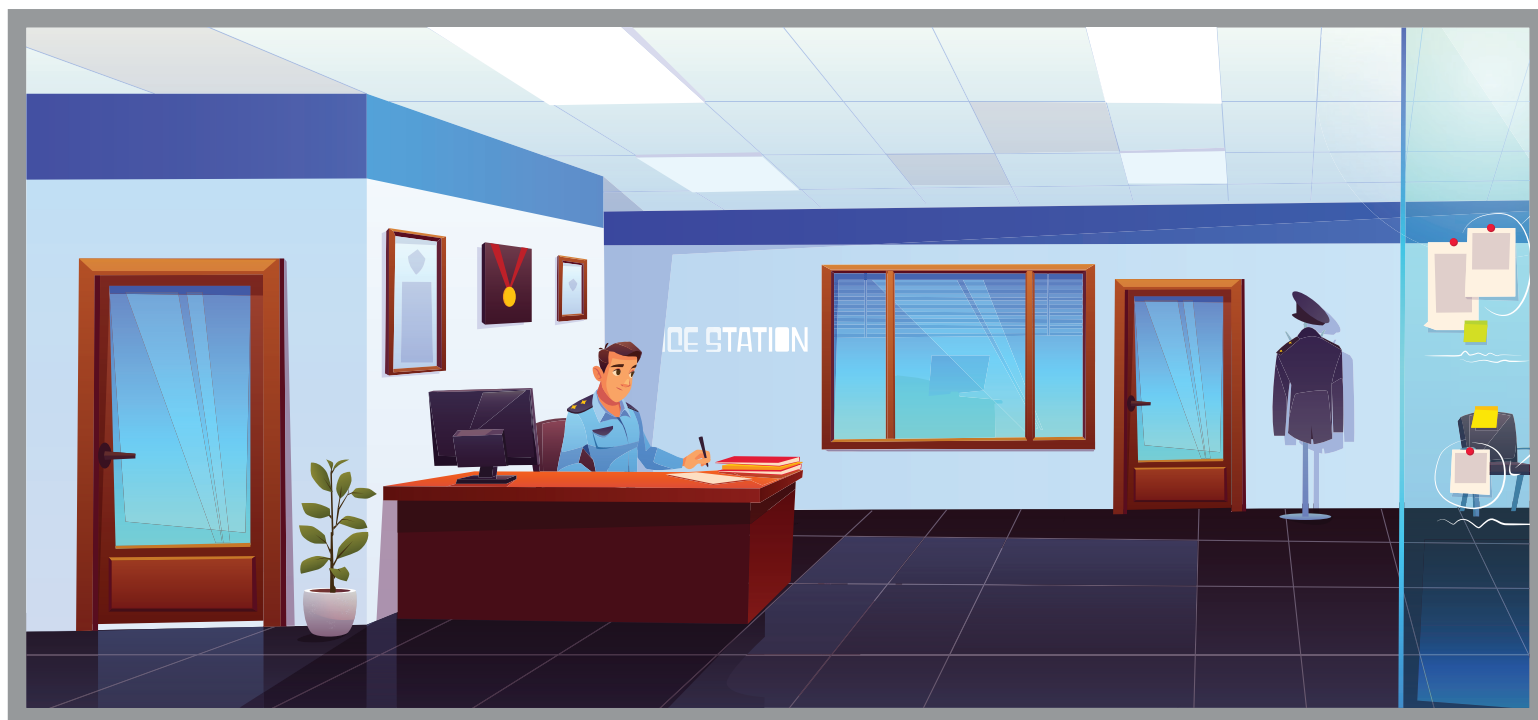
NOTE

BP14: led back lit panel 1x4
 BP24: led back lit panel 2x4
 40W: Power: 40W
 ZZ: CCT
 30: 3000K
 35: 3500K
 40: 4000K/4100K
 50: 5000K
 XX: Blank representing Standard
 B0: representing Premium
 YY: Blank: None
 EM: Emergency driver
 @@: Blank: None
 MS: Motion Sensor



ADVANTAGE

- No LGP, therefore there is NO yellowing risk
- Elegantly designed to withstand bending.
- Light weight for easy installation.
- Slim design at 1.38" thick
- Unique design separating high-volt wire and low-volt wires, for a safer installation
- Unique integrated driver + junction box design
 (If a larger junction box, emergency ballast, or motion sensor is needed, this can be special ordered)



LED 2X2 LED PANEL LIGHT

40W

SPECIFICATIONS

ITEM	SYMBOL	UNIT	RATED VALUE
INPUT VOLTAGE	U	v	120-277
FREQUENCY	f	Hz	50/60
POWER FACTOR	PF	-	0.9
TOTAL HARMONIC DISTORTION	THD	%	>20
LIFETIME (L70/B50)	T	h	5000
AMBIENT TEMPERATURE RANGE	Ta	°C	-20~45
STORAGE TEMPERATURE	Ts	°C	-20~80
IP PROTECTION	-	-	IP20

POWER/w	CCT/k	Ra	Voltage/v	Dim	Lumens
40	3000K 3500,4000,5000	>80	120-277	0-10V	4400



LED 2X2 LED PANEL LIGHT

40W

DIMENSIONS

