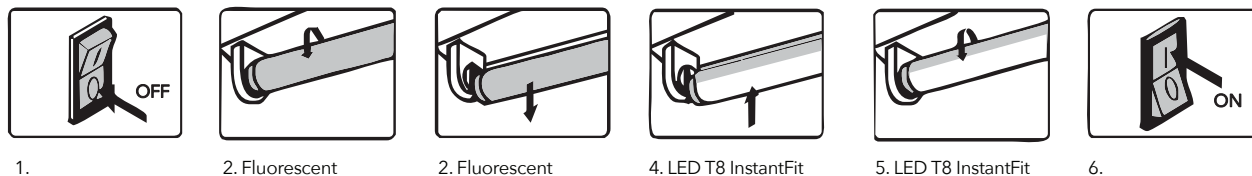


INSTALLATION INSTRUCTION

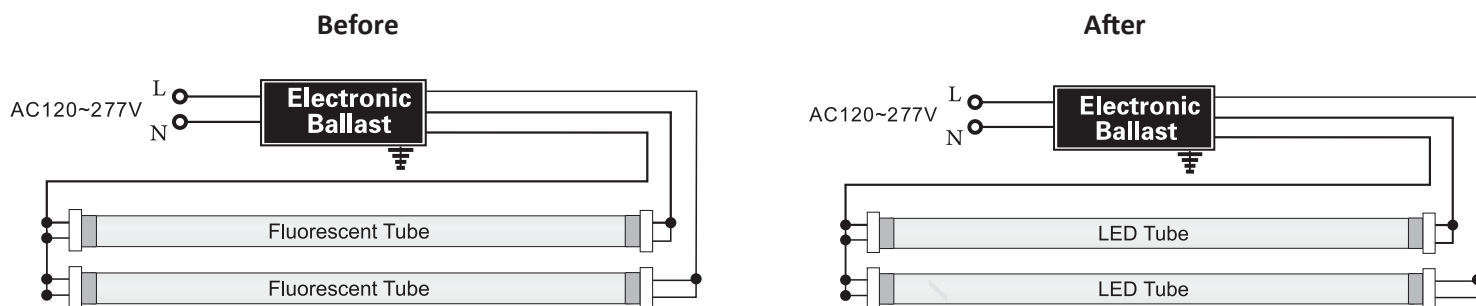
Dual Mode Internal Driver For Compatible Tube



“Plug and Play” Procedure

1. Turn off the power
2. Remove diffuser (if provided)
3. Remove the fluorecent tubes. Please dispose of these items properly as they contain mercury
4. Put led tube in the lig ng fixture
5. Install the led tubes, close the diffuser (if provided)
6. Turn on the power

WIRING DIAGRAM



(UL TypeA)

⚠ WARNING

1. These lamps should be installed by a licensed electrician.
2. These lamps should be used indoors(damp or dry locations only). Not suitable for wet location.
3. Make sure tombstones/lampholder are still in good condition and not defected before installation.
4. Ensure the brand and model no. of the ballast of replacement tube are in our compatible ballast list.
5. Make sure the ballast is working and still under warranty before installation.
6. Put LED tubes/G13 pins into right position of the socket, install properly.
7. This device is not suitable for using with emergency exits.
8. These lamps are not suitable to be used with a light dimmer. Manufacturer is not liable for any damage to product or property due to improper installation. Please refer to the above Installation Instructions for reference.

BALLAST LIST FOR T8 LED TUBES

1. Our tubes can be compatible with the ballasts listed below. If you intend to install ballast compatible tube with ballasts not be listed below, risk of damage or losses may occur. We disclaim liability for any damage or losses by not following the instruction in this document.
2. We are testing more and more ballasts and will update this list all the time. If you do not see your ballast on the list, please contact us.

SYLVANIA
QHE 1x32T8/UNV ISN-SC
QHE 2x32T8/UNV PSX-MC
QHE 3x32T8/UNV ISL-SC
QTP 2x32T8/UNV ISL-SC
QT 2x32T8/347 ISL-SC
QHE 4x32T8/347 ISN-SC
QHE 4x32T8/347 ISL-SC
GE
GE232MAX-L/Ultra
GE432MAX-N/Ultra
GE332MAX-N/Ultra
GE232MAX347-N
GE432MAX347-N
GE232MAX-G-N
GE432MAX-G-N
GE432-MAX-G-N-42T
GE332-MVPS-N
GE432-MVPS-N
GE432MV-N-42T
GE432MAXP-L/ULTRA
GE232N-347
OSRAM
QHE 2x32T8/UNV ISN-SC
QHE 2x32T8/UNV ISL-SC
QHE 2x32T8/UNV PSN-MC
QHE 3x32T8/UNV ISN-SC
QHE 3x32T8/UNV PSN-SC
PHILIPS
ICN-2P32-N
ICN-3P32-N
ICN-4P32-N
IOP-4P32-LW-N
IOP-4PSP32-SC
IOPA-1P32-N
IOPA-4P32-N
IOPA-2P32-LW-N
IOP-3P32-N

ESPEN
VE232MVHIPLE
VE232MVHIPE
VE432MVHIPE
VE432MVHIPLE
VE432120HIP
UNIVERSAL
B332IUNVHE-A
B232IUNVHE-N
B332IUNVEL-A
B332PUNVHE-A
B4321UNVEL-A
TRIAD
B232IUNVHP-N
B332IUNVHP-A
B432IUNVHP-A
B232IUNVHP-B
ADVANCE
IOPA-4P32-LW-N
REL-2P32-SC
KEYSTONE
KTEB-232RIS-1-TP-SL/G
HOWARD INDUSTRIES
EP3/32IS/MV/MC/HE
HALCO
EP232IS/L/MV/HE
PACIFIC FLUORESCENT
EB-232IS-120-RES
ACCUPRO
AP-432IP-UNV
AP-332IP-UNV-M
SUPERIOR LIFT
70204
ULTRASAVE
UT232120