

# LED INDUSTRIAL CORN LIGHT

100W

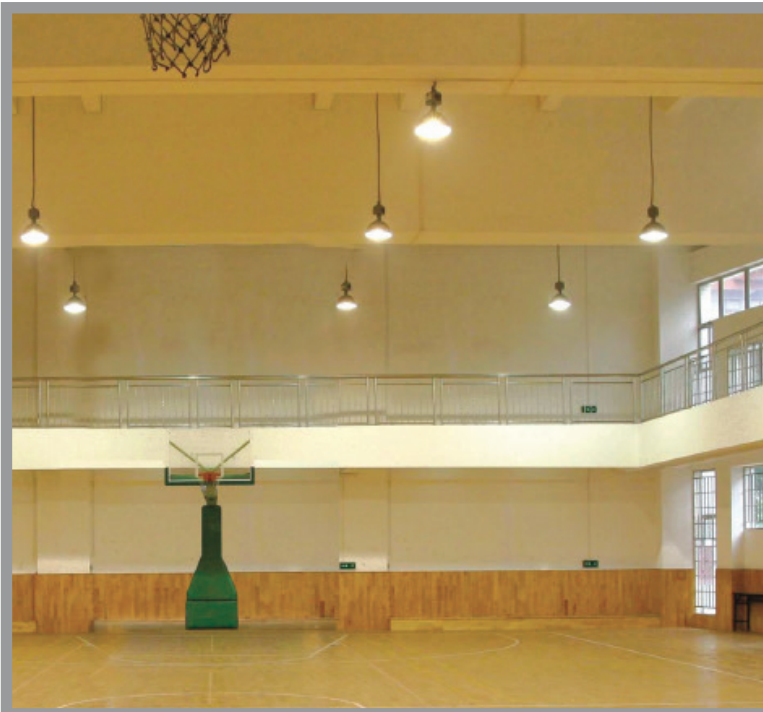
PART NO: GT-CHB02-060WACSB1

## ADVANTAGE

- UL certificate
- Input voltage 120V AC
- No UV or IR in the beam
- Easy to install and operate
- Energy saving, long lifespan
- Instant start, NO flickering, NO humming
- Green and eco-friendly without mercury

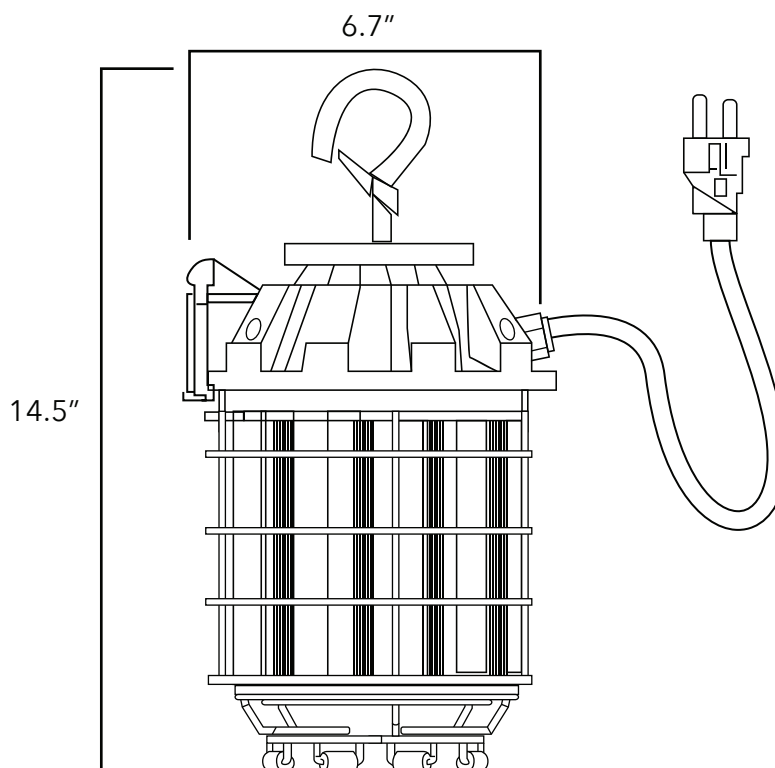
## APPLICATION

- Warehouses
- Factories
- Workshops
- Highway Toll Stations
- Gas Stations
- Exhibition Halls
- Gymnasiums
- Supermarkets



# LED INDUSTRIAL CORN LIGHT

100W



## WARRANTY

This product has a warranty for a period of 5 years from the date of purchase. The warranty is invalid in the case of improper installation, tampering, or removal of the Q.C. date label. Installation in an improper working environment or installation not according to the current edition of the National Electric Code also invalidates the warranty. Should this product fail during the warranty period, it will

be replaced free of charge, subject to correct installation and return of the faulty unit. Greentek Energy Systems does not accept responsibility for any installation costs associated with the replacement of this product. This warranty is in addition to the statutory rights in the country of purchase. Greentek Energy Systems reserves the right to alter specifications without prior notice.

## PRODUCT SPECIFICATIONS

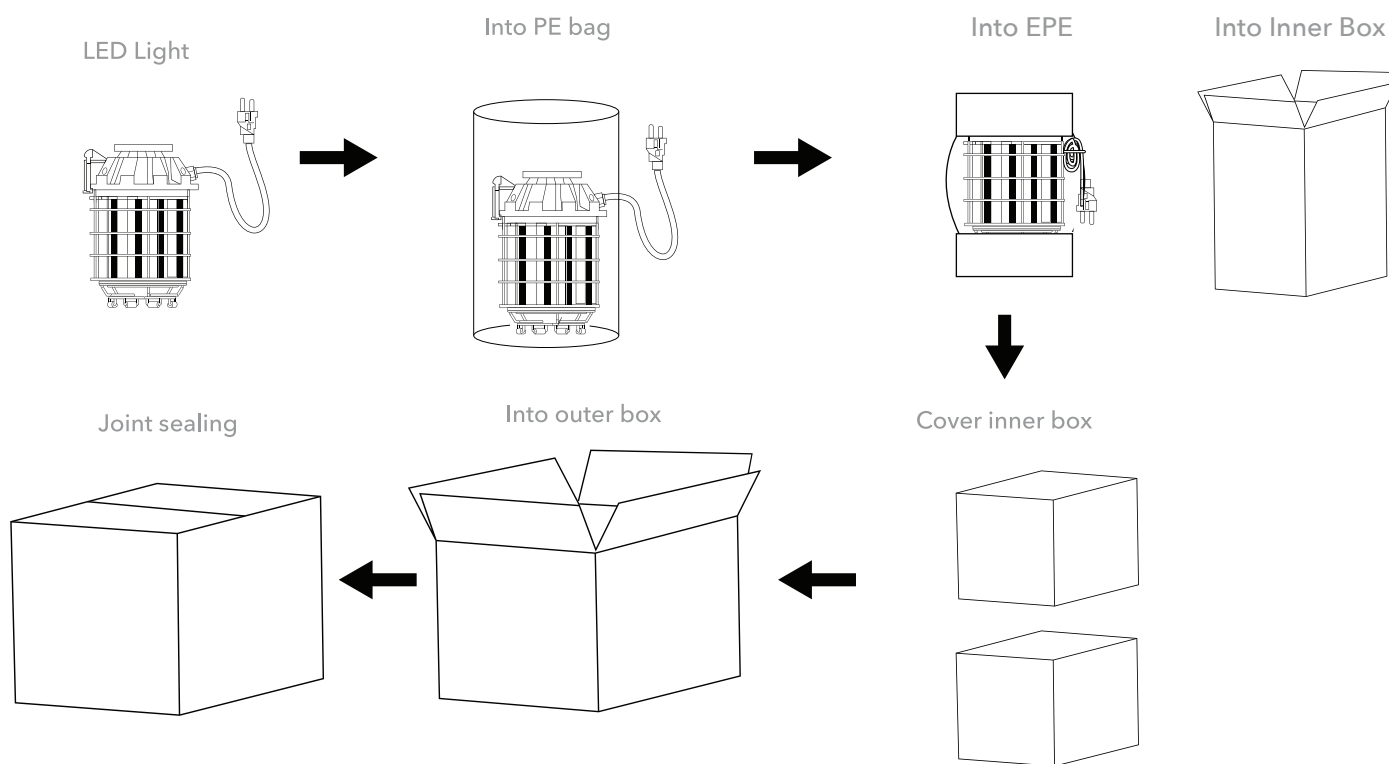
Part No	GT-CHB02-100WACSB1	Viewing Angle	285°	Operating Temperature	-4°F TO 122°F
Stent type	Hook Mount	Input Voltage	120VAC 50/60Hz	Operating Humidity	20%-90% RH
Product size	6.7" x 14.5"	Driver Brand	SOSEN	Storage Temperature	-22°F TO 176°F
Color Temperature	2700-6500K	PF	>0.9	Storage Humidity	10%-75%
CRI	>80	Waterproof Rating	DAMP	Application	Indoor / Outdoor
Cover	Clear	LED Type	SMD2835(0.5W)		
Lumen	10500 - 12500LM	LED QTY	288PCS		
Lumen Efficacy	105-115LM/W	Safety Certification	UL		
Input Power	100W	Warranty Time	5YRS		

# LED INDUSTRIAL CORN LIGHT

100W

## PACKAGING

	Size	Qty/Carton	Net Weight/Carton	Gross Weight/Carton
Inner Box	8.3" x 8.3" x 12.9"	1	4.8lbs	5.3lbs
Outer Box	17.3" x 17.3" x 13.7"	4	21.4lbs	24.7lbs



## CAUTION

- Please turn off power before install or change assembly parts.
- The input voltage and lamps should be matched, after connecting the power line, Please make sure the wiring section is insulated.
- No-professionals, must not install and disassemble the lamps.

## TROUBLESHOOTING

Troubles	Check points
Flickering of the light	Turn off the power and turn on again in 3 minutes. If same phenomena occur, then call agencies
Out of working	Please check the connection