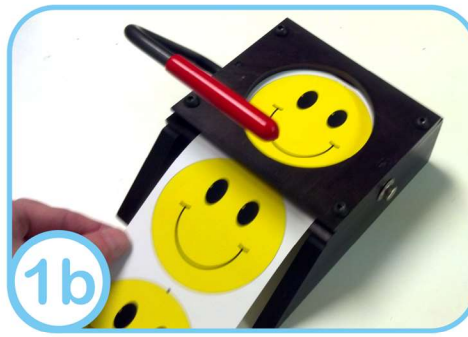


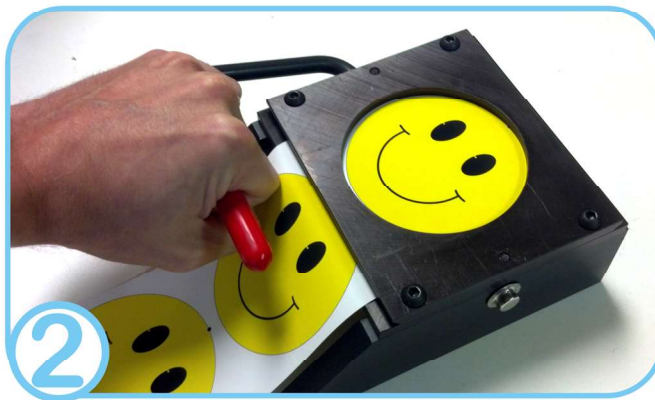
A guide to operating your Graphic Hand Press



STEP 1

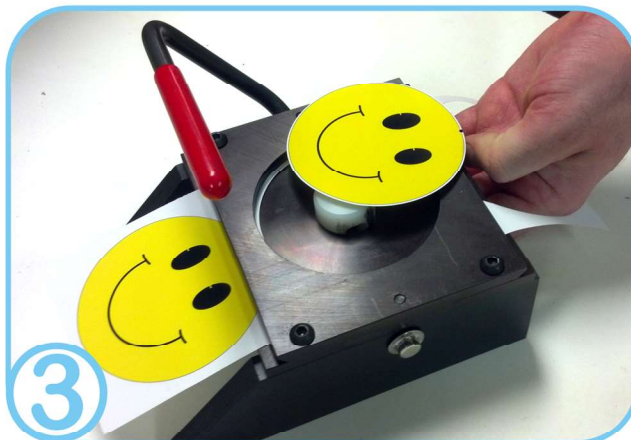
- After cutting your images into strips [1a], insert printed sheet with your graphics into the hand punch. [1b]

Note: Make sure that your image is aligned closely to the punch outline.



STEP 2

- Firmly punch the image out by pushing firmly down on the lever. You will see the circular image is now separate from the paper strip.



STEP 3

- Push the white release piece to extract your image. It should now be ready to be made into a button!

