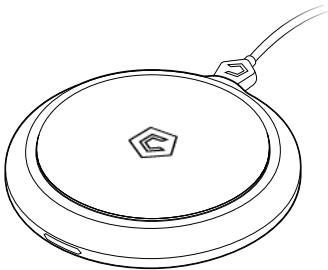


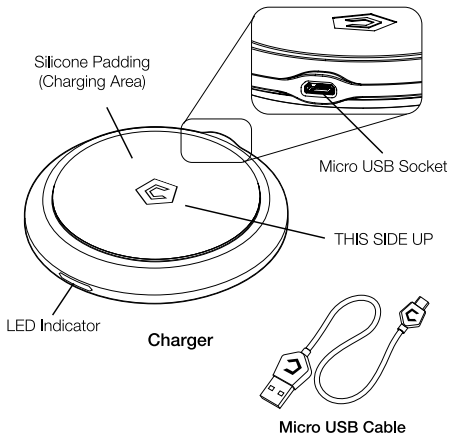


COBBLE[®] PRO



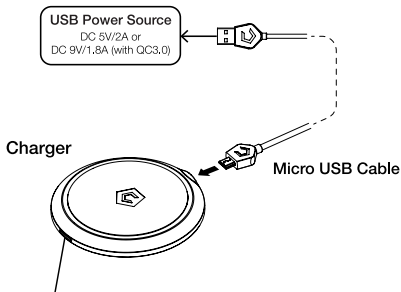
Wireless Charging Pad

Appearance



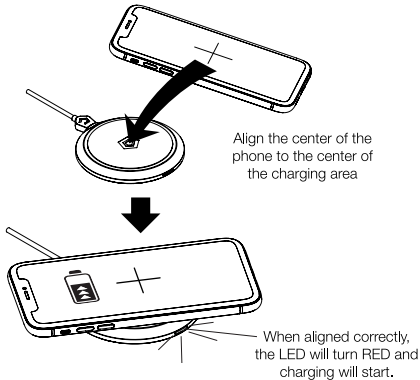
Setting Up for Charging

1. Connect the charger to a USB power source with the micro USB cable included.



When powered up, LED will blink in blue and red for 2 seconds then dim. The charger will then enter standby mode and is ready for charging.

2. This charger is Qi-compatible. Put your phone (that has internal Qi-charging feature) onto the charging area of the charger. For the best charging performance, align the center of your phone to the center of the charging area. When aligned correctly, the LED will turn red and charging will start.



LED Charging Indicator

Refer to the following list for the charging status that the LED indicator is representing:

LED Status	Charging Status
Blinking Blue & Red for 2s then off	Power connected. Entering standby mode and ready for charging.
Red	Charging in progress
Blue	Charging completed. (Note*: This status only happens with smartphones that come with internal Qi wireless charging pads, the LED will stay Red when it on the charger)
Continuous Blinking Blue & Red	Problems detected with the phone's Qi charging function. Charging will not function until the problem has been solved.

Precautions

- ▶ All parts of this product are not water resistant. Avoid extreme moisture, rain, or spilling any liquid on it. If cleaning is required, remove the phone and USB cable, clean it with a towel that is slightly damp in mild soapy water. Use weak, office adhesive tape to remove dust from the silicone padding.
- ▶ Do not disassemble the charger. Do not attempt to connect the product to any power sources other than a USB power outlet. Improper power input will damage the product.

Specifications

Compatibility: Qi-compatible

Power Input: DC 5V/2A or DC 9V/1.5A with
QC 3.0 power supply

Output: 5V/1A 5W or 9V/1.5A 10W with
QC 3.0 power supply

Operating environment: 0°C - 45°C (32°F - 113°F)
10 - 85% Relative Humidity

