

MT408 Load Pin



<p>Features</p> <p>Double ended shear beam</p> <p>Tool Steel / St Steel Construction</p> <p>Plated</p> <p>350 or 700 ohm bridge resistance</p> <p>Custom Built</p>	<p>Simple to Install</p> <p>Applications</p> <p>Travelling cranes</p> <p>Lifting Structures</p> <p>Shackle Pin replacement</p> <p>Safety Equipment</p>
---	---

Typical Specifications

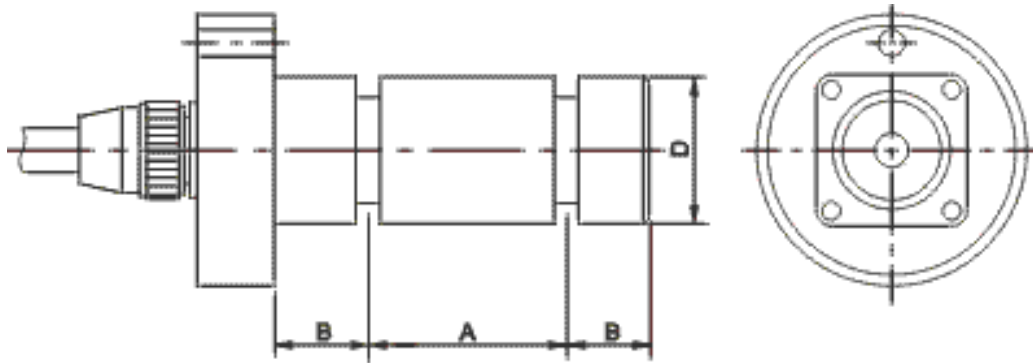
Capacity	t	As per customer need
Combined Error	(%FS)	≤±0.5
Creep	%FS/30min	≤±0.05
Temperature effect on sensitivity	(%FS/10C)	≤±0.05
Temperature effect on zero	(%FS/10C)	≤±0.05
Output sensitivity	(mv/v)	1.0±0.1
Input resistance	(Ω)	770±25 or 385+/-15
Output resistance	(Ω)	700±7 or 350+/-4
Insulation resistance	(MΩ)	≥ 5000(50VDC)
Zero balance	(%FS)	1.0
Temperature, Compensated	(°C)	-10~+50
Temperature, Operating	(°C)	-25~+60
Excitation, Recommended	(V)	5~12(DC)
Excitation, Max	(V)	18(DC)
Safe overload	(%FS)	120
Ultimate overload	(%FS)	225



Millennium Mechatronics Limited
 Email: info@meltrons.com | www.meltrons.com



MT408 Load Pin



Dimensions

The dimensions A, B and D will be made depending on customer's need .

Cable exit can be made axial or radial , depending on the actual installation.

Load Pins can be made in Tool Steel or Stainless Steel material.

Cable

4 Core, 5.5mm dia

Cable Length: 5m

Color Code

Exc+ Red, Exc- Black

Sig+ Green, Sig- White

Screen- Transparent

Enquiries

Please email engineering@meltrons.com with details of your requirement such as load pin capacity, preferred pin material (tool steel or Stainless Steel), dimensions in above sketch (A,B, D and any other critical dimensions) and preferred cable length . Our design engineer will contact you , so that a proposal and quotation can be organized.

Specifications are subject to change without notice for improvement

MT408REV01-29122011



Millennium Mechatronics Limited
Email: info@meltrons.com | www.meltrons.com

