

# MT408SLP Shackle Load Pin



<p><b>Features</b></p> <p>Capacities 3/5/10/25/55t ( To suit 3.25/6.5/12/25/55t Shackles)</p> <p>Double ended shear beam</p> <p>St Steel Construction</p> <p>700 ohm bridge resistance</p>	<p>Fully sealed</p> <p>Simple to Install</p> <p><b>Options:</b></p> <p>Sleeve (Bobbin)</p> <p>Anti-rotation plate ( to match shackle)</p> <p>Shackles</p>
--	---

## Typical Specifications

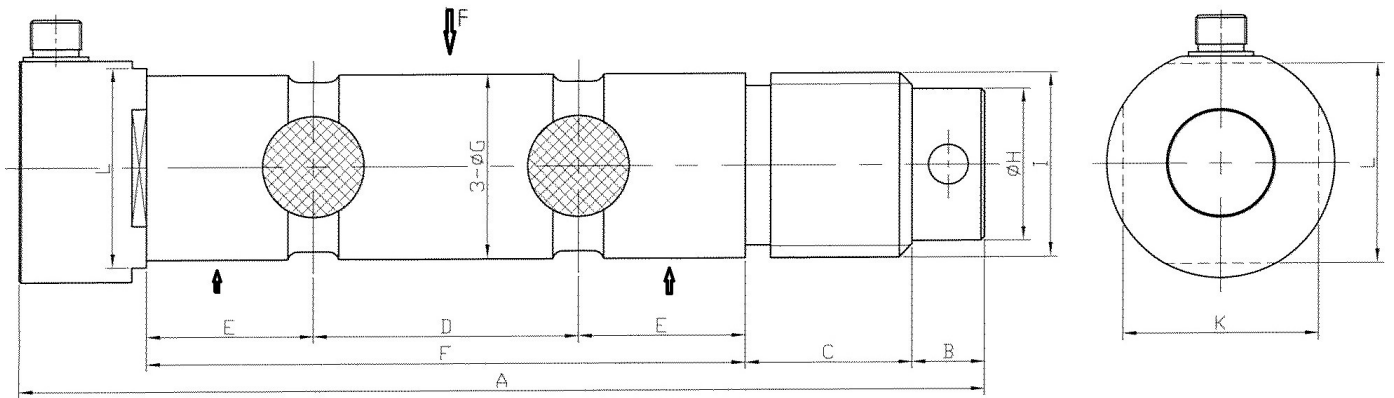
Capacity	t	3, 5, 10, 25 and 55t
Combined Error	(%FS)	≤±0.5
Creep	%FS/30min	≤±0.05
Temperature effect on sensitivity	(%FS/10C)	≤±0.05
Temperature effect on zero	(%FS/10C)	≤±0.05
Output sensitivity	(mv/v)	1.5±0.1
Input resistance	(Ω)	770±25
Output resistance	(Ω)	700±7
Insulation resistance	(MΩ)	≥ 5000(50VDC)
Zero balance	(%FS)	1.0
Temperature, Compensated	(°C)	-10~+50
Temperature, Operating	(°C)	-25~+60
Excitation, Recommended	(V)	5~12(DC)
Excitation, Max	(V)	18(DC)
Safe overload	(%FS)	>150
Ultimate overload	(%FS)	>300



Millennium Mechatronics Limited  
Email: [info@meltrons.com](mailto:info@meltrons.com) | [www.meltrons.com](http://www.meltrons.com)



# MT408SLP Load Pin



Capacity (t)	A	B	C	D	E	F	G	H	I	J	K	L
3	116	10	16	27	16	59	19	13	3/4"-10UNC	36	25	26
5	143	10	23	36	22	80	25	19	1"-8UNC	42	33	34
10	192	15	32	51	32	115	35	25	1-3/8"-6UNC	52	41	42
25	267	20	46	73	46	165	50.8	42	2"-4.5UNC	63	54	55
55	359	25	63	105	65	235	70	62	2-3/4"-4UNC	88	74	75

All dimensions in mm , except dimension I in inches

Load pin is fitted with a 5 pin connector and a 10m cable with matching connector is supplied.

## Colour Code of cable:

4 Core, 5.5mm dia , Cable Length: 10m

## Color Code

Exc+ Red, Exc- Black

Sig+ Green, Sig- White

Screen- Yellow



Millennium Mechatronics Limited  
Email: [info@meltrons.com](mailto:info@meltrons.com) | [www.meltrons.com](http://www.meltrons.com)

