

MT404 TWA



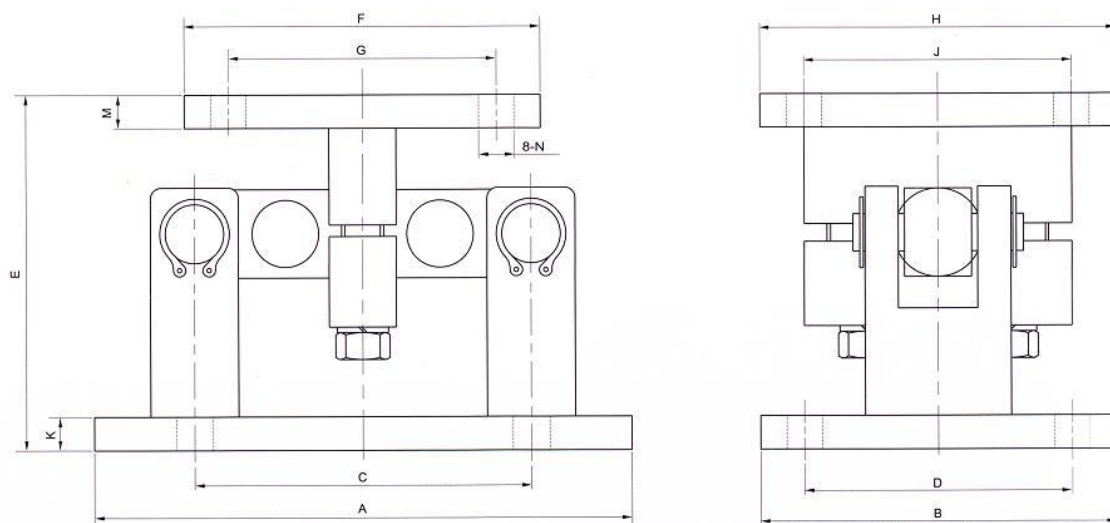
MT404 Tank Weighing Assembly (MT404TWA)

| | |
|---------------------------|--|
| Features | High Accuracy |
| Double ended shear beam | Easy to install |
| Tool Steel Construction | IP68 Protection |
| Welded Construction | Floating bearing structure |
| Water Proof | Applications |
| Electroless Nickel Plated | Truck scales, Railway Scales, Hopper and Silo weighing |

Specifications

| | | |
|-----------------------------------|-----------------|-----------------------|
| Capacities | Klb | 5,10,25,35,50,75, 100 |
| Combined Error | (%FS) | $\leq \pm 0.020$ |
| Creep | %FS/30min | $\leq \pm 0.017$ |
| Temperature effect on sensitivity | (%FS/10C) | $\leq \pm 0.010$ |
| Temperature effect on zero | (%FS/10C) | $\leq \pm 0.017$ |
| Output sensitivity | (mv/v) | 3.0 ± 0.01 |
| Input resistance | (Ω) | 730 ± 35 |
| Output resistance | (Ω) | 700 ± 7 |
| Insulation resistance | (M Ω) | $\geq 5000(50VDC)$ |
| Zero balance | (%FS) | 1.0 |
| Temperature, Compensated | ($^{\circ}C$) | -10 ~ +40 |
| Temperature, Operating | ($^{\circ}C$) | -35 ~ +65 |
| Excitation, Recommended | (V) | 5 ~ 12(DC) |
| Excitation, Max | (V) | 18(DC) |
| Safe overload | (%FS) | 150 |
| Ultimate overload | (%FS) | 300 |





| Capacity (klb) | A | B | C | D | E | F | G | H | J | K | M | N |
|----------------|-------|-------|-----|-----|-------|-----|-----|-----|-----|------|------|----|
| 5 | 235 | 127 | 159 | 95 | 127 | 102 | 70 | 102 | 70 | 12.7 | 12.7 | 14 |
| 10-35 | 305.2 | 203.2 | 191 | 152 | 200.2 | 203 | 152 | 203 | 152 | 19.0 | 19.0 | 20 |
| 50-75 | 413.2 | 305.2 | 292 | 241 | 237.2 | 229 | 165 | 229 | 165 | 25.4 | 25.4 | 20 |
| 100 | 597 | 356 | 508 | 305 | 298.5 | 254 | 203 | 254 | 203 | 38 | 38 | 28 |



MT404 Load cell

Cable: 4 Core, 5.4mm dia , Cable Length: 12m

Color Code

Exc+ Red, Exc- Black

Sig+ Green, Sig- White ,

Screen- Transparent



Millennium Mechatronics Limited
 Email: info@meltrons.com | www.meltrons.com