

MT404 TWA



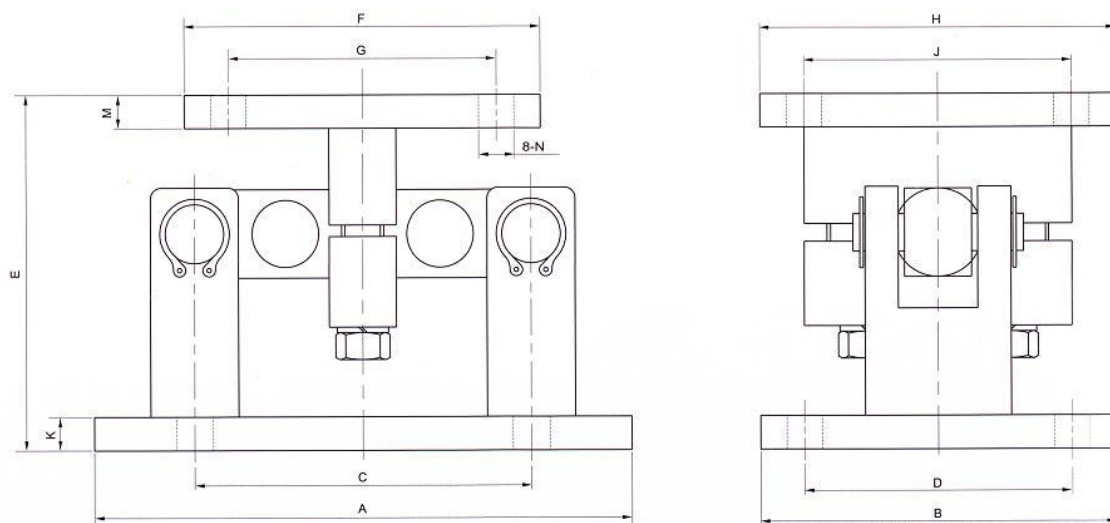
MT404 Tank Weighing Assembly (MT404TWA)

Features	High Accuracy
Double ended shear beam	Easy to install
Tool Steel Construction	IP68 Protection
Welded Construction	Floating bearing structure
Water Proof	Applications
Electroless Nickel Plated	Truck scales, Railway Scales, Hopper and Silo weighing

Specifications

Capacities	Klb	5,10,25,50,75, 100
Combined Error	(%FS)	≤±0.020
Creep	%FS/30min	≤±0.017
Temperature effect on sensitivity	(%FS/10C)	≤±0.010
Temperature effect on zero	(%FS/10C)	≤±0.017
Output sensitivity	(mv/v)	3.0±0.01
Input resistance	(Ω)	730±35
Output resistance	(Ω)	700±7
Insulation resistance	(MΩ)	≥ 5000(50VDC)
Zero balance	(%FS)	1.0
Temperature, Compensated	(°C)	-10~+40
Temperature, Operating	(°C)	-35~+65
Excitation, Recommended	(V)	5~12(DC)
Excitation, Max	(V)	18(DC)
Safe overload	(%FS)	150
Ultimate overload	(%FS)	300





Capacity (klb)	A	B	C	D	E	F	G	H	J	K	M	N
5	235	127	159	95	127	102	70	102	70	12.7	12.7	14
10-25	305.2	203.2	191	152	200.2	203	152	203	152	19.0	19.0	20
50-75	413.2	305.2	292	241	237.2	229	165	229	165	25.4	25.4	20
100	597	356	508	305	298.5	254	203	254	203	38	38	28



MT404 Load cell

Cable: 4 Core, 5.4mm dia , Cable Length: 12m

Color Code

Exc+ Red, Exc- Black

Sig+ Green, Sig- White ,

Screen- Transparent

