

# MT401 Shear Beam Load Cell



## Features

- Features
- Tool Steel Construction
- Water Proof
- Electroless Nickel Plated
- IP67
- Low Profile
- High Accuracy
- Simple to install
- Strain gauges triple protected

## Applications

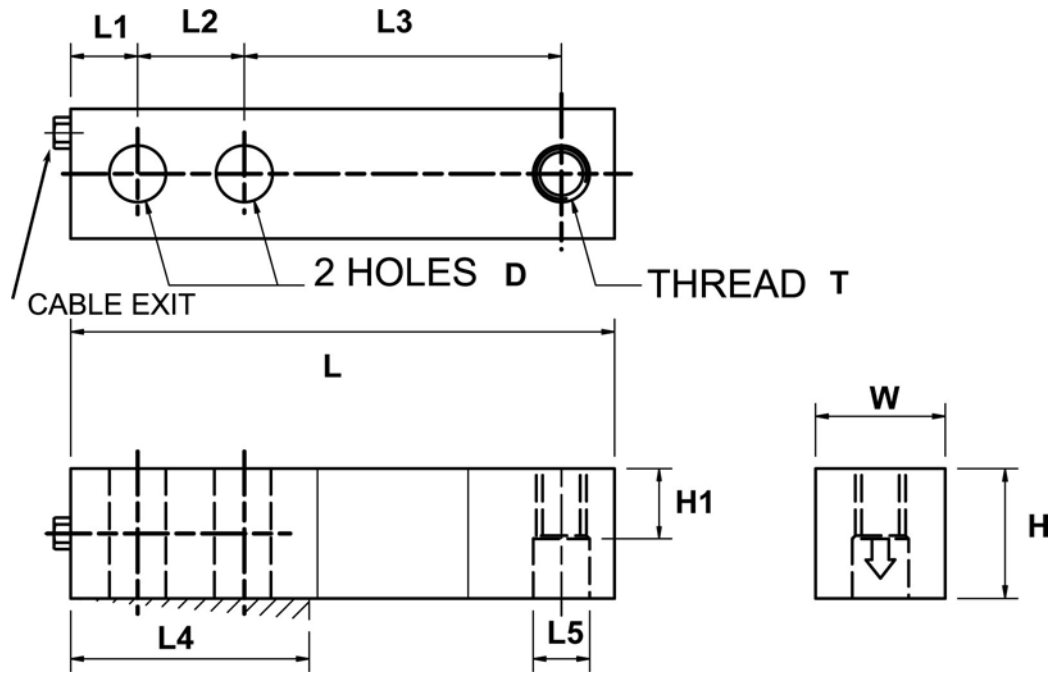
Platform Scales, Hopper, Silo and Tank scales

## Specifications

Capacities	kg	250,500,1000,1500,2000,2500,3000,5000,10000 kg
Combined error	(%FS)	≤±0.020
Creep	%FS/30min	≤±0.016
Temperature effect on sensitivity	(%FS/10°C)	≤±0.014
Temperature effect on zero	(%FS/10°C)	≤±0.017
Output sensitivity	(mV/V)	3.000±0.01*
Input resistance	(Ω)	350±5
Output resistance	(Ω)	350±3.5
Insulation resistance	(MΩ)	≥ 5000(50VDC)
Zero balance	(%FS)	2.0
Temperature, Compensated	(°C)	-10~+40
Temperature, Operating	(°C)	-35~+65
Excitation, Recommended	(V)	5~12(DC)
Excitation, Max	(V)	18(DC)
Safe overload	(%FS)	150
Ultimate overload	(%FS)	300

\* 2.000±0.01 mV/V for 250kg

## MT401 Shear Beam Dimensions



Part Number	Capacity	L1	L2	L3	L	W	H	D	T	H1	L4	L5	Weight
MT401T0250KG	250KG	15.8	25.4	76.2	130.0	31.8	31.8	13.5	M12 x 1.75P	16.0	54.0	13.5	1.1KG
MT401T0500KG	500KG	15.8	25.4	76.2	130.0	31.8	31.8	13.5	M12 x 1.75P	16.0	54.0	13.5	1.1KG
MT401T1000KG	1000KG	15.8	25.4	76.2	130.0	31.8	31.8	13.5	M12 x 1.75P	16.0	54.0	13.5	1.1KG
MT401T1500KG	1500KG	15.8	25.4	76.2	130.0	31.8	31.8	13.5	M12 x 1.75P	16.0	54.0	13.5	1.1KG
MT401T2000KG	2000KG	15.8	25.4	76.2	130.0	31.8	31.8	13.5	M12 x 1.75P	16.0	54.0	13.5	1.1KG
MT401T2500KG	2500KG	19.1	38.1	95.3	171.5	38.1	38.1	20.0	M18 x 1.5P	19.0	76.0	19.8	2.1KG
MT401T3000KG	3000KG	19.1	38.1	95.3	171.5	38.1	38.1	20.0	M18 x 1.5P	19.0	76.0	19.8	2.1KG
MT401T5000KG	5000KG	19.1	38.1	95.3	171.5	38.1	38.1	20.0	M18 x 1.5P	19.0	76.0	19.8	2.1KG
MT401T00010T	10000KG	25.4	50.8	120.7	222.3	50.8	50.8	26.9	M24 x 2P	25.0	101.0	25.4	4.6KG

### Cable specifications:

Cable: 4 Core, 5mm dia cable

Cable Length: 250kg-2000kg: 3.8m, 2500kg-10000kg-5.8m

### Color Code:

Exc+ Red, Exc- Black, Sig+ Green, Sig- White

Specifications are subject to change without notice for improvement

MT401Rev0 25012010

