



**SINGER®**

| Intelligent™ 2.0

26" Steam Press



## Efficient, High-Quality Pressing

With a pressing surface 7x larger than a standard iron, the SINGER® INTELLIGENT™ 2.0 26" Steam Press delivers high-quality results in a fraction of the time. Easily press shirts, trousers, home linens, fabric for sewing projects and more—with or without steam. Its generous size and even heat distribution make it ideal for garment sewing, quilting and crafting.



**SINGER**

Intelligent™ 2.0



### Guided SMART Digital Controls

- Easy Mode - 5 pre-set fabric selection options.
- Pro Mode - fully adjustable temperature and time control.



### Large Pressing Surface

Press more in less time with the spacious 25" x 12" (63.5 x 30.5 cm) non-stick surface.



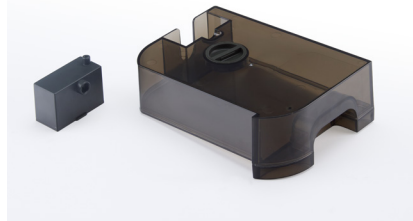
### Two Steam Output Options

110 grams/min of continuous steam output with two convenient buttons for on-demand steam bursts.



### Heat Protection Bumpers

The bumpers around the corners of the press help protect you from coming in contact with the heated metal surface.



### Water Tank and Replaceable Water Filter

1,000 ml removable, easy-fill water tank with a replaceable filter that allows tap water use; digital display alerts when the filter needs replacing.

### Quick Heat Up Time

The large pressing plate heats up to the Nylon temperature setting in approximately 2 min 15 sec.

### Auto Shut Off

Built-in sensor turns off steam press if closed for 10 sec or left open for 15 min.

### Included Accessories

- Spray bottle
- Pressing cushion
- Replacement water filter