



BOE Fabrication's Fastworks for Lotus

Installation Notes

Years: 2008-Present

Engine Codes: 2ZZ-GE and 2GR-FE Only

Preface:

There are two installations to take place prior to receiving the new calibration file. First, you must install the software into a Windows 7 or newer Windows OS. Second, our firmware will need to be installed into the ECU. A stable internet connection must be present during all times, as our software works interactively with our cloud server.

Note: NEVER "jump start" a Lotus fitted with a T6 ECU (Evoras and Exige V6s)

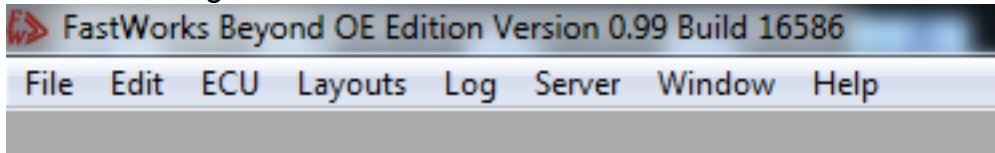
Laptop Installation

- Do not plug in the tuning cable until the following is complete.
- Turn virus software off. Our Software will appear to be Malware, but it is not.
- Verify internet connectivity
- Download the installer file per the DropBox link provided in an email
- Run the installer.
- At the conclusion of the successful installation, start the BOE Fastworks software.
- Plug the tuning cable into the laptop and allow Windows to associate the drivers with the cable.
- This step is complete.

ECU Firmware Installation

- **CAUTION. Be sure there is no other device on the CANBUS such as an AIM data system, Motec Data, etc. If another system is on the CANBUS, the power to that device MUST be OFF. The ECU may be irreparably corrupted with another CANBUS device on the net work during flashing.**
- Be sure a stable internet connection is present.
- Be sure tune cable is connected to the car and laptop
- Be sure the battery is strong on the car and/or plugged into a tender (Must be over 12V)
- Turn the key to the On position.

- Run the Fastworks Software. BOE Fastworks is specific to Lotus. NO OTHER VERSION of Fastworks software will work on the Lotus. Installations of other Fastworks software versions may create difficult to resolve issues. You must be running version 16586 or newer with the BOE Splash logo present upon opening the software.
- If you're an existing BOE Lotus Fastworks customer, use your existing log in. If not, you should have received log in information with the email and password. If you have a question about this, please contact us beforehand. It may take 2 attempts to log in to receive the required credentials to get into the software.
- Go to the navigation header and click Server



- Renew your License in the Server menu
- Click ECU, then Connect
- Go to the Window menu and copy the Vehicle info to clipboard. Paste this information to an email and prepare to send it to sales@boefab.com. Do not send the email just yet.
- Go the ECU menu and click Perform Installation. Follow the instructions. DO NOT multitask your laptop during this time. You may be asked to perform ignition key cycles during the installation, so do not leave during the installation process. It takes a few minutes. Evoras will show a “Comms Error” on the dash during flashing.
- At the completion of the firmware installation, the vehicle will remain perfectly operational in a stock form but the ECU will now have our firmware within.
- Go to your “Documents” folder in your Windows File Explorer. Find the Fastworks folder. Look in the “Layouts” or the “Tunes” directory for a file “YourVin.cod”. Copy that COD file to the email you started earlier. This COD file is the editing base file that is keyed to your license. It is also the original calibration for your car and should be used to return the car to stock if needed in the future.
- At this point, send the email you began above with the Vehicle Information, COD file, and a completed Tune Request Form, “TRF”, (found in Support on BOEFAB.COM) to sales@boefab.com
- **If the installation Fails along the way, don't panic.** Failed installations are typically a sign that your vehicle possesses a calibration that is not on our server. Please send the email as described above with the vehicle information and TRF along with a screenshot of the failure message to sales@boefab.com and await our reply. You will obviously not have a COD file to send in this case. Allow 48 hours before emailing again for next steps in the event we have not already replied.

Installation of the Tuned Calibration

- Typically, you'll receive a new tuned calibration within 7 business days of us receiving the above email. If you have not received a tune in this timeframe, please email sales@boefab.com with an inquiry and status update.

- When you receive the tune via email, save the tune calibration to your “tunes” directory found in documents and then the Fastworks folder.
- Open the software as you have prior.
- Click File and Open the tune you saved prior received in email. You should see the tune name in the software header next to the version number after opening.
- Turn the key on
- Click ECU, and click connect as you have prior.
- Click ECU again and click Write. Follow the instructions. The write process is less than a minute.
- If the car is an IPS car, you will need to clear the codes stored with a standard OBD2 code reader. FYI- IPS cars may require 400 miles of driving to refine the shifting habits to work best with your new tune.
- Cycle the key off for 10 seconds.
- This step is complete. Verify that the car is operating correctly before driving in anger. Due to wide variations in premium pump gas quality, we always suggest a 50/50 blend *at minimum*
- of 100 octane fuel on forced induction cars while on track. Take due notice thereof and govern yourself accordingly. Enjoy!