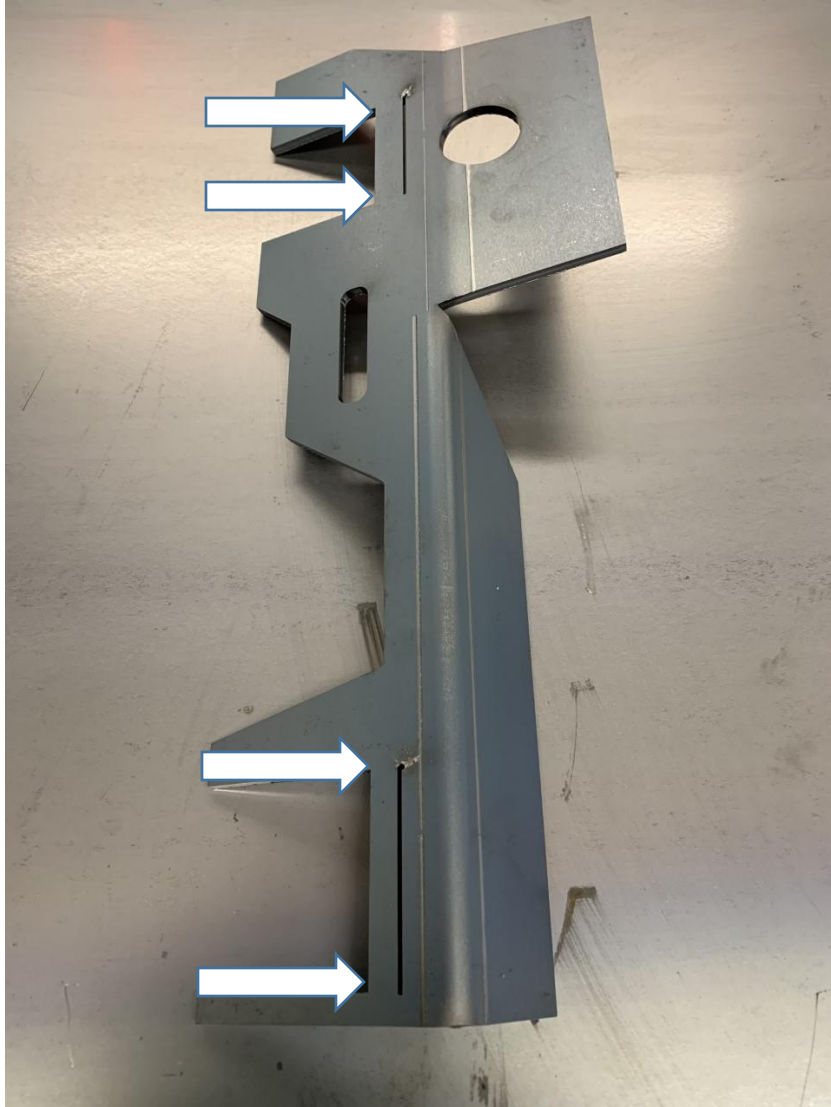




XJ Door Hinge Support Installation Instructions

PLEASE USE ALL NORMAL WELDING PRECAUTIONS WHEN INSTALLING THIS PRODUCT. DISCONNECT YOUR BATTERY, MAKE SURE ALL WIRES ARE OUT THEWAY OF WHERE YOU ARE WELDING, AND PREP ALL AREAS TO BE WELDED TO BARE METAL. We recommend using a weld-able primer to coat the inside of the bracket and anywhere there is bare metal.

1. Remove your factory fender. You will have to remove the front clip to access the 3 torx bolts behind the headlight. There are 2 bolts to remove that the door must be open to access, one on the bottom of the fender and 5 inside the engine bay.
2. Remove the small plastic plug below the top hinge.
3. For 97+ XJs you will have to make 4 small cuts to enlarge the opening for the different hinge. See the diagram on the next page. Arrows mark where you should cut.



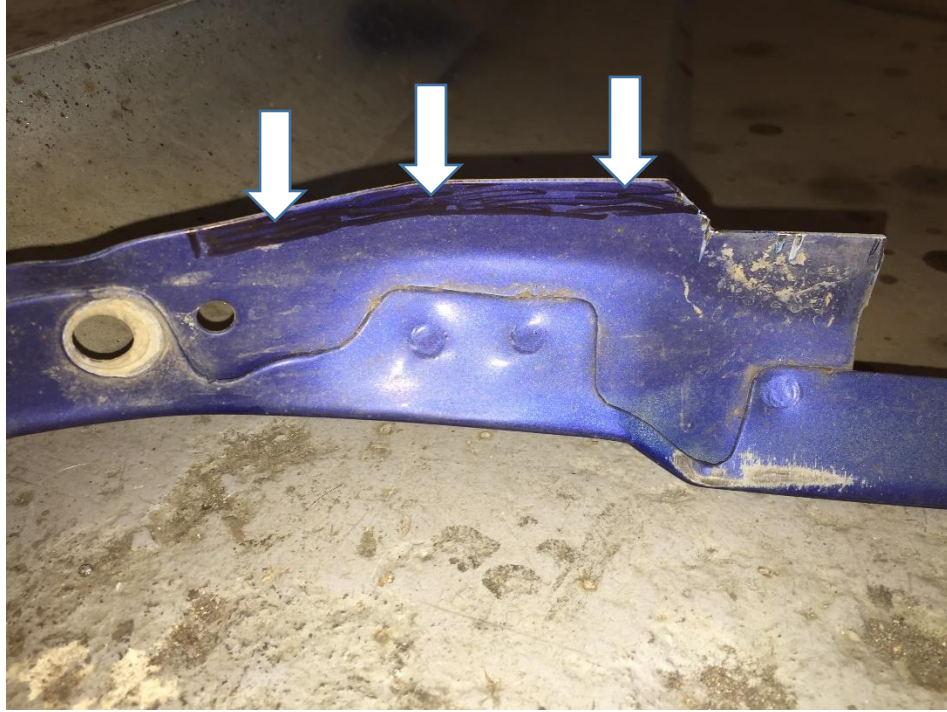
4. Hold up the bracket and mark where you will need to weld. Clamps may be necessary for tight fitment in some places. Take all areas to be welded to bare metal. Coat with weld-able primer.
5. **DO NOT WELD COMPLETELY IN. STITCH IN THE PIECE. LEAVE A FEW INCHES BETWEEN WELDS ON THE PERIMETER. WELD THE TOP, BACK AND BOTTOM OF THE HINGES TO THE BRACKET.**



6. Prep all areas that have been welded for paint. Use a high quality coating of your choice.



7. You must trim a small section off the Factory Fender. Use a cut off wheel or sanding disc to clearance the area shown in the pic below.



8. Enjoy no more sagging hinges. Also affixing Hooligan Stickers to your Jeep will ensure that you gain the most horsepower and rock crawling ability from this mod!!