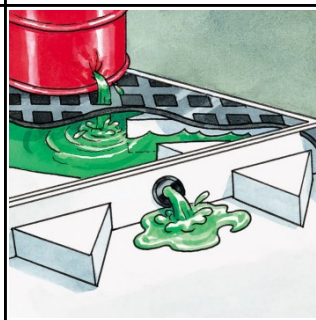


PIG® Poly Modular Spill Deck

#PAK524 - Holds 1 Drum • Use With Plastic & Steel Drums • 11 gal. Sump Capacity



Connectable, shared-sump decks let you build up to your required sump capacity to help meet containment regs.

- Patented "flow-through" sump design lets liquid pass freely from one sump to another to help you comply with containment regulations
- Modular design features exclusive bulkhead fittings and predrilled ports to connect to other decks; ready to use as soon as they arrive
- Mix and match the sections you need to fit your space and help meet sump capacity requirements
- Special tools and hardware to connect sections is included with each system
- Low-profile 5.75"H design is easy to load or unload; pumps and funnels are easy to access
- Textured grating adds traction and lifts out for easy sump access
- Translucent white sidewalls allow easy visual inspection
- We test all of our PIG Containment Deck designs at max load for months to ensure they can handle full capacity at your facility



New Pig International

By Phone:
+1-814-684-0101

Online:
newpig.com/International

Email:
hothogs@newpig.com

One Pork Avenue • Tipton PA 16684-0304

© 2016 New Pig Corporation. All rights reserved.
PIG and the PIG logo are trademarks in the U.S. and other countries.

ITEM: PAK524 - Pg 1 of 3

PAK524 Specifications

Color:	White/Black
Dimensions:	26" W x 26" L x 5.75" H
Recycled Content:	39% Post-Industrial Recycled Polyethylene
Load Capacity UDL:	1500 lbs.
Sump Capacity:	11 gal.
Containment Type:	Containment Deck
Double-Stackable Unit:	No
Drain:	No Drain
Fork Truck Access:	No Fork Truck Access
Grates:	(1) 24" L x 24" W Grate
Groundable for Flammables:	No
Number of Containers:	1 Drum
Type of Container:	Plastic & Steel Drums
Sold as:	1 each
Weight:	25 lbs.
New Pig Patent:	Patent 5,562,047; And Other Foreign Patents
# per Pallet:	20
Composition:	Sump - LDPE w/ UV Inhibitor Grate - Polyethylene
Includes:	1 - PIG® Plug Assembly (PAK578) 1 - PIG® Poly Bulkhead Fitting (PAK561) 1 - 24" L x 24" W x 2.63" H Grate 1 - T-Strip (PAK950) 1 - Wrench 1 - Instruction Booklet
UNSPSC:	24101905

PAK524 Metric Equivalent

Dimensions:	66cm W x 66cm L x 14.6cm H
Load Capacity UDL:	680.4 kg
Sump Capacity:	41.6 L
Weight:	11.3 kg

Technical Information

Warnings & Restrictions:

Flammables Notice

If using this product with flammable liquids, please consider the regulations that apply to storage and handling of flammable liquids and the safety of this application, specifically flammable vapors, static discharge and heat sources. For further assistance, please call Technical Services.

Regulations and Compliance:

40 CFR 264.175 - Hazardous waste containment systems must be free of structural cracks or gaps, be designed to keep spilled liquids from remaining in contact with the container, prevent run-on and "have sufficient capacity to contain 10% of the volume of the containers, or the volume of the largest container, whichever is greater."

40 CFR 122.26 - When applying for a National Pollutant Discharge Elimination System (NPDES) permit, facilities must have a plan in place that describes actions, procedures, control techniques, management practices and equipment available to prevent illegal discharge of pollutants into waterways.

40 CFR 112.7 - SPCC planning requirements state that facilities subject to these regulations must have written plans in place discussing the products, countermeasures and procedures that are in place, or will be taken by the facility to prevent discharge of oil into waters of the United States.

Technical Documents:

(Available at newpig.com/International)

Product Data Sheet (PDS)

Chemical Compatibility (CCG)



New Pig International

By Phone:
+1-814-684-0101

Online:
newpig.com/International




Email:
hothogs@newpig.com

One Pork Avenue • Tipton PA 16684-0304

© 2016 New Pig Corporation. All rights reserved.
PIG and the PIG logo are trademarks in the U.S. and other countries.

ITEM: PAK524 - Pg 2 of 3

PAK524 Accessories

You might like...	Item Number
 PIG® Steel Loading Ramp	PAK538
 PIG® Poly Modular Spill Deck	PAK529
 PIG® Poly Modular Spill Deck	PAK531



By Phone:
+1-814-684-0101

Online:
newpig.com/International

Email:
hothogs@newpig.com

New Pig International

One Pork Avenue • Tipton PA 16684-0304
© 2016 New Pig Corporation. All rights reserved.
PIG and the PIG logo are trademarks in the U.S. and other countries.

ITEM: PAK524 - Pg 3 of 3