

# allura click INSTALLATION GUIDE

## PARTS

- Allura Click flooring tiles
- Underlay roll

## TOOLS

- 5 mm Spacers (can use left over board)
- Mallet
- Utility knife

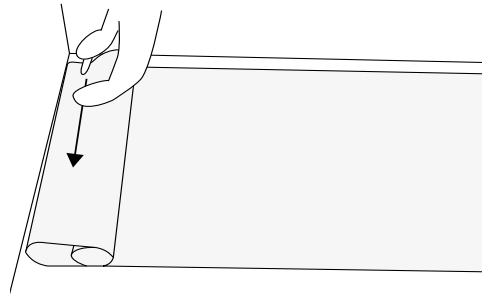
## STEPS

NOTE: The tiles should be left in the area to acclimatise for at least 24 hours before the installation begins.

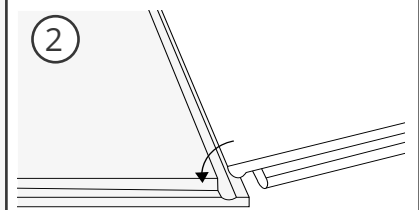
1

Roll out the underlay all the way across the area, and trim with the utility knife.

Layout the first tile in the corner, with the bottom lip pointing away from the wall. Leave a 5 mm on all sides, using the spacers.

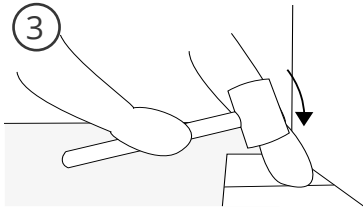


2



Clip in the next tile at a shallow angle with the first.

3

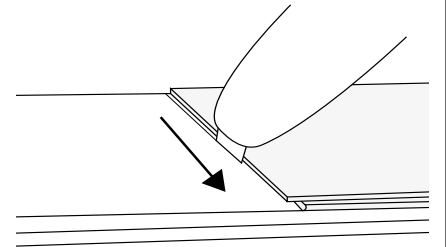


Use the mallet to smooth out the joint.

4

When the wall is reached, place a second tile exactly on top of the last, and place a third on top but pushed up against the wall.

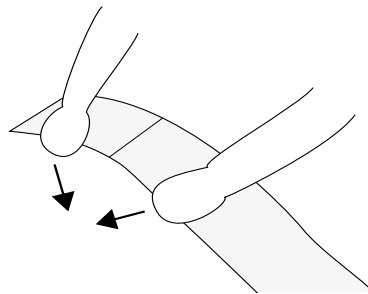
Use the knife to slice along the middle board, along the edge of the top tile.



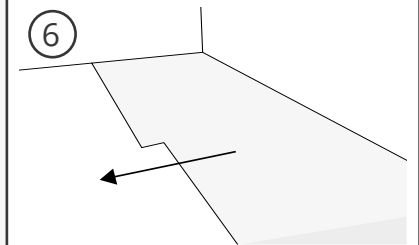
5

Break the tile along this knife cut by snapping it.

Place the tile in the gap, and save the other half to start the next row.



6



Continue laying out the rows until the entire area is covered.

For more information, please visit our website or contact our sales team.

