

INSTALLATION GUIDE

PARTS

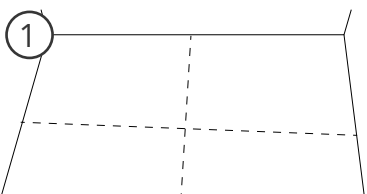
- Allura flooring tiles
- Adhesive (e.g. Eurocol 646)
- Levelling Compound (Optional)

TOOLS

- Pencil and Ruler
- Adhesive tray and Fine-toothed spatula
- 60 kg roller
- Utility knife
- PPE

STEPS

PREPARATION: The tiles should be left in the area to acclimatise for at least 24 hours before the installation begins. The area must be clean, even, permanently dry and free from grease and dirt. If the subfloor is impervious, a 2 mm layer of levelling compound must be applied.

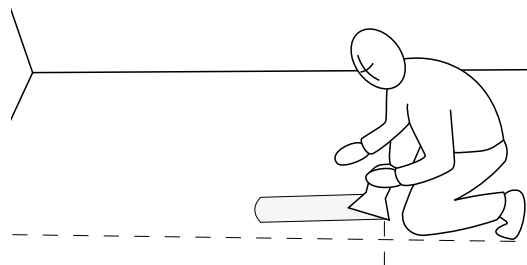


1
Clean the area you wish to lay, and draw a cross through the centre to make four quarters.

2

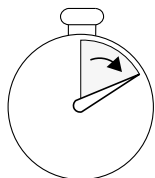
Apply the adhesive to each quadrant in turn, so a clean working area is always left.

Use the adhesive tray to evenly spread the adhesive on the spatula before spreading it.



3

Leave the adhesive for 10 minutes.

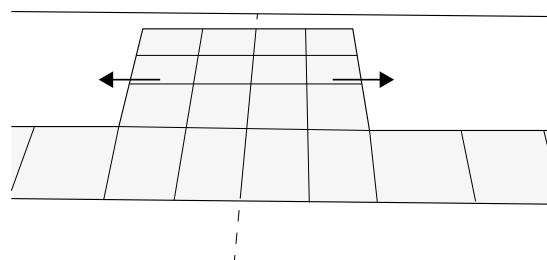


A light touch should transfer a little adhesive to the finger, a firm touch should leave a smear.

4

Place a tile into the top corner of one of the quadrants.

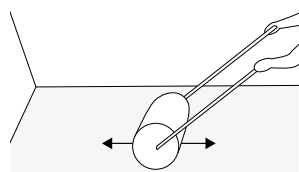
Layout an entire row of tiles, and then lay out columns spreading outwards to complete the area.



5

Use the 60 kg roller to smooth it out the tiles and ensure proper adhesion.

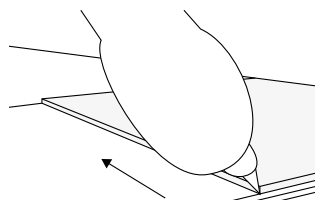
Roll the tiles frequently for the next



6

To size a tile to fit against a wall, place two tiles exactly on top of the last complete tile. Then push the top tile up against the wall to create a difference.

Use the knife to slice the middle board along the edge created by the difference. Place this extra board in the gap, and save the left over for the next gap. Note after slicing you may need to snap the score line to separate the tile.



For more information, please visit our website or contact our sales team.

