

- In addition to routine checks for each use, PPE should regularly undergo a detailed inspection by a competent person. Petzl recommends an inspection every 12 months and after any exceptional event in the life of the product.
  - PPE inspection should be conducted with the manufacturer's Instructions for Use.
- Download the instructions at [PETZL.COM](http://PETZL.COM).

## ASAP'SORBER



### 1. Known product history

Any PPE showing unexpected degradation should be quarantined, pending a detailed inspection.

The user should:

- Provide precise information on the usage conditions.
- Report any exceptional event regarding his PPE.  
 (Examples: fall or fall arrest, use or storage at extreme temperatures, modification outside manufacturer's facilities...).

### 2. Preliminary observations

Verify the presence and legibility of the serial number and the CE mark.

**Attention**, the serial number code on our products is evolving. Two types of code will coexist. See below for details on each serial number code.

Code A:

**00 000 AA 0000**

Year of manufacture  
 Day of manufacture  
 Name of Inspector  
 Incrementation

Code B:

**00 A 0000000 000**

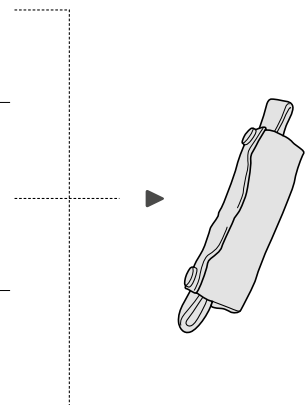
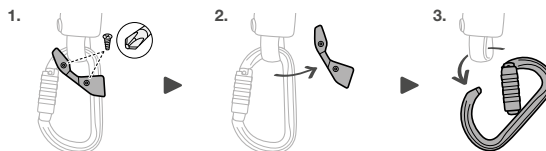
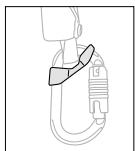
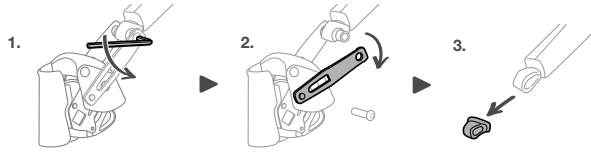
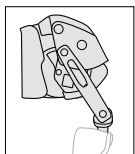
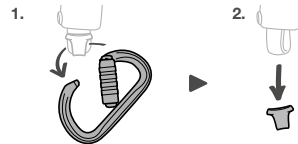
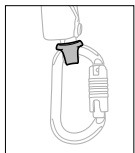
Year of manufacture  
 Month of manufacture  
 Batch number  
 Incrementation

Verify that the product lifetime has not been exceeded.

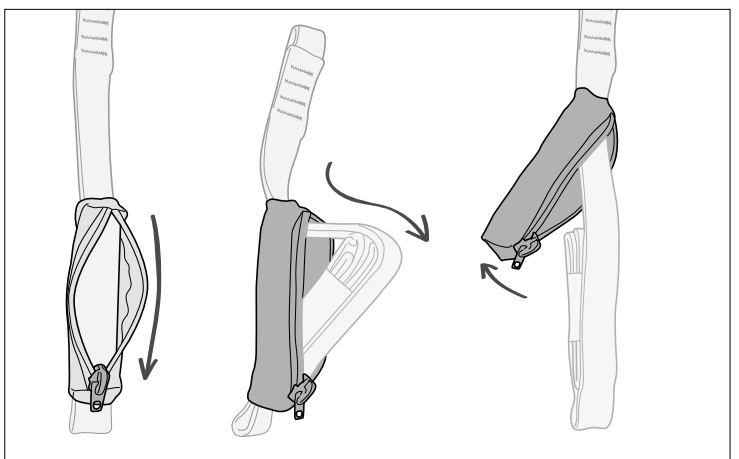
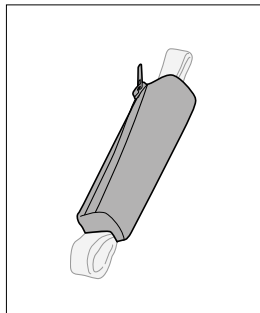
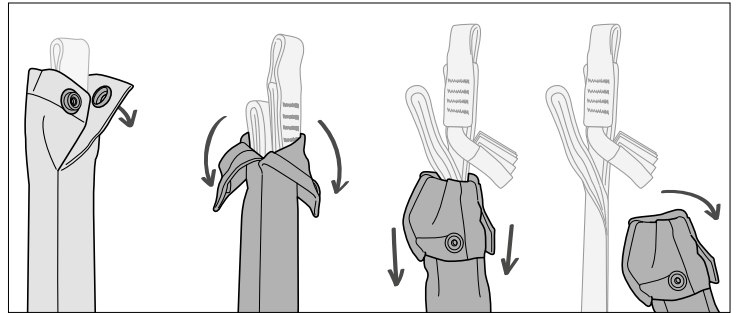
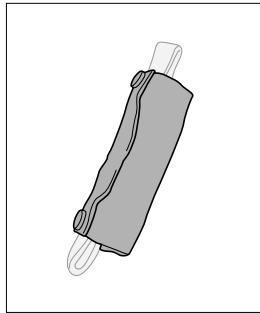
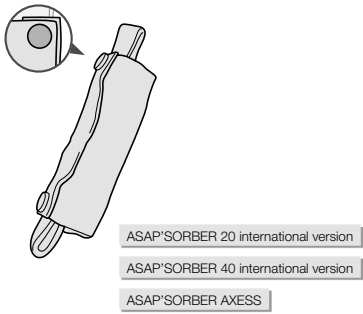
Compare with a new product to verify there are no modifications or missing parts.

### 3. Preparation

- Depending on your model, remove the CAPTIVs, carabiners and STRING, or remove the ASAP'SORBER from the ASAP LOCK.

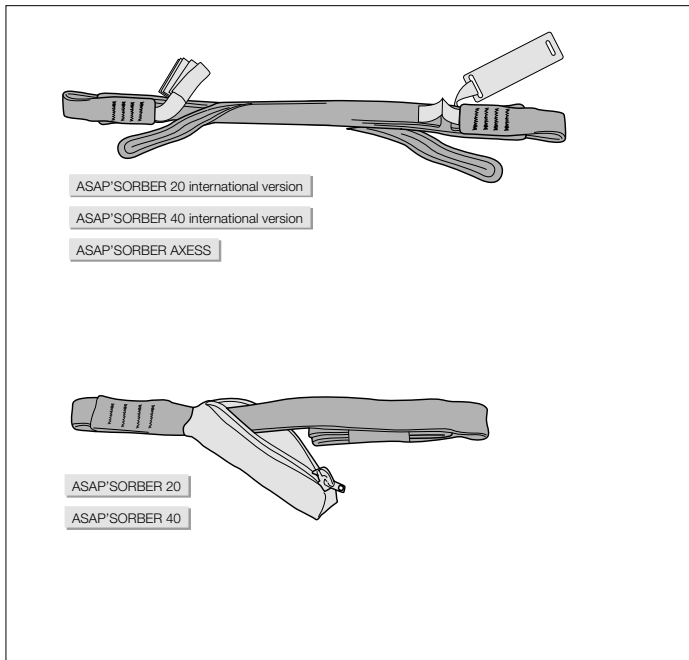


#### 4. Checking the condition of the energy absorber

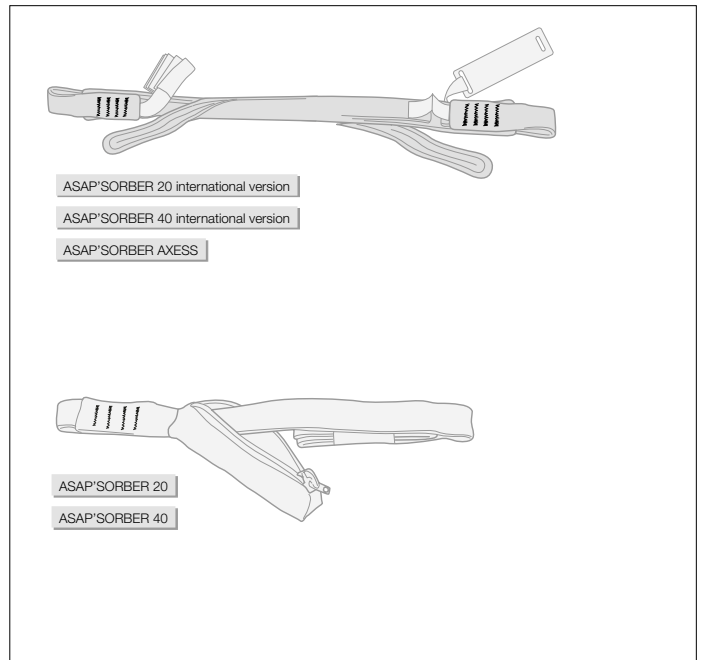


• Check the condition of the pouch. Look for wear and damage due to use (cuts, fuzziness, signs of chemicals...).

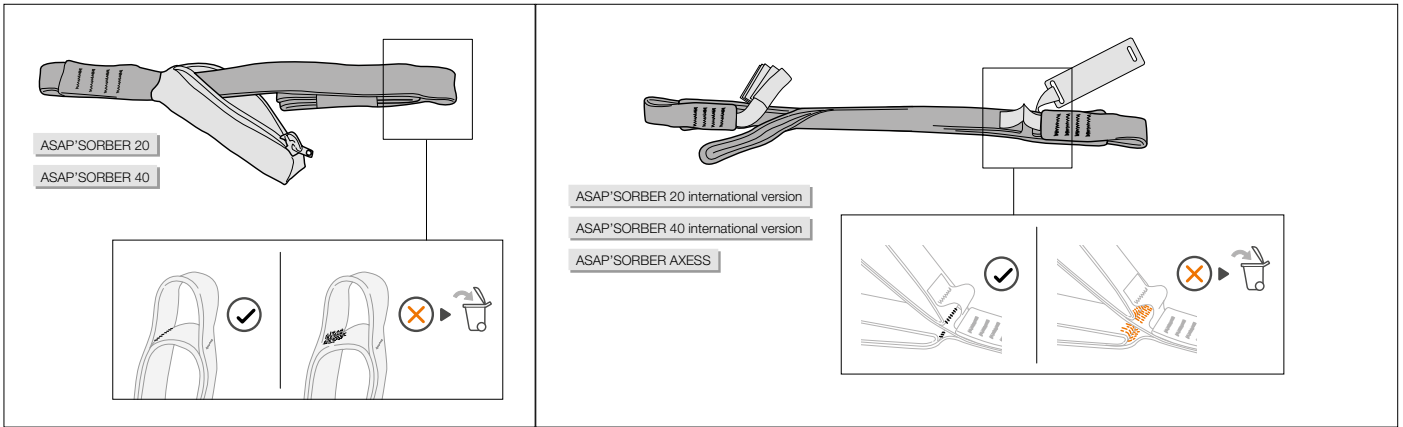
• Open the pouch and pull out the energy absorber.



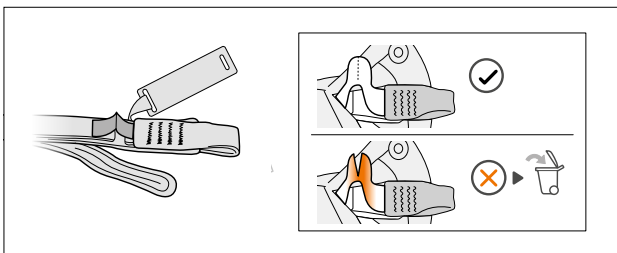
• Check the condition of the energy absorber. Look for wear and damage due to use (cuts, fuzziness, signs of chemicals...).



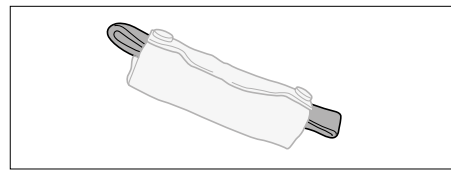
• Check the condition of the safety stitching on both sides. Look for any threads that are loose, worn, or cut.



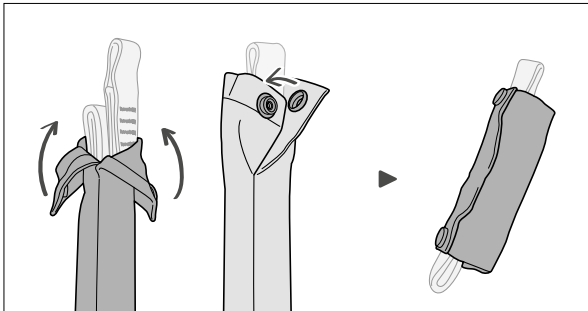
- Verify that the energy absorber has not sustained an impact load (verify that none of the fabric between the straps has been torn).



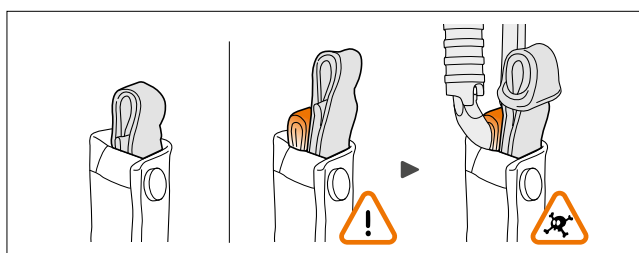
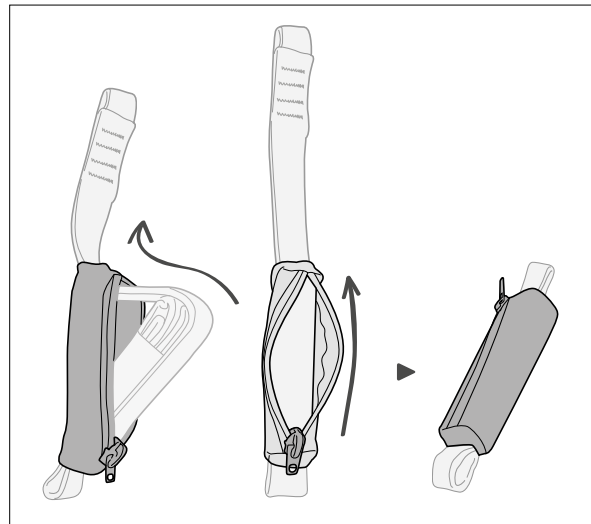
- On the ASAP'SORBER international version and ASAP'SORBER AXESS, verify that the fall indicator has not been torn.



- Check the condition of the connection points. Look for wear and damage due to use (cuts, fuzziness, signs of chemicals...).

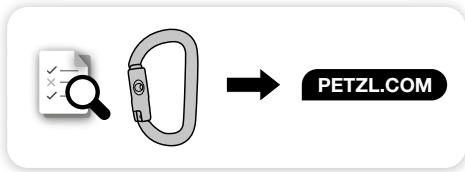


- Put the energy absorber back in the pouch and close it.



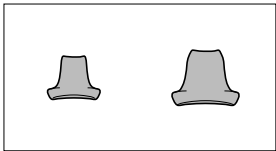
- Verify that all of the energy absorber webbing is properly protected in the pouch.

## 5. Checking the condition of the connectors

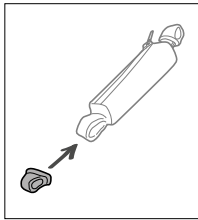


- For connector inspection, see the inspection form for your connector model at Petzl.com.

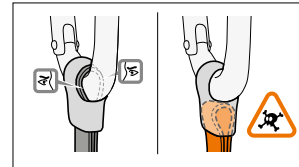
## 6. Checking the protection elements



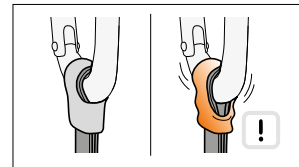
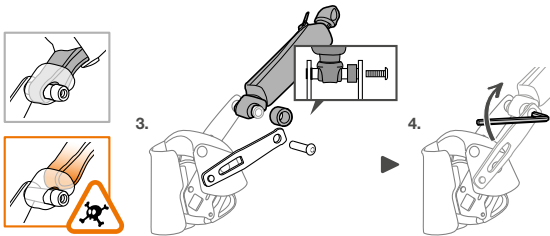
- Check the condition of the STRINGs.



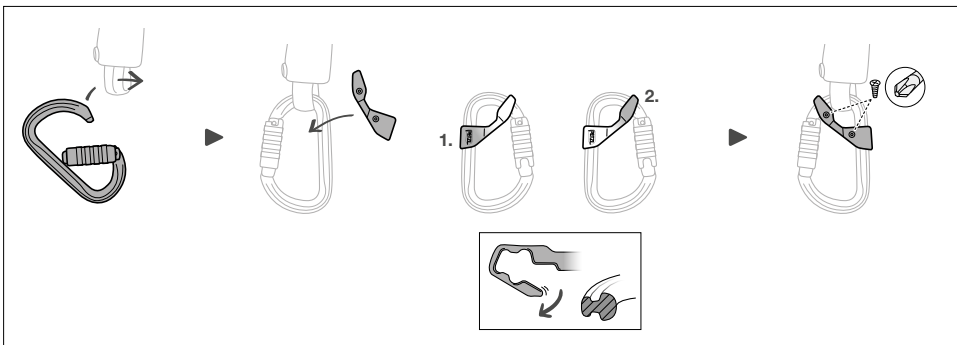
- Reinstall the STRINGs on the attachment points.



- Verify that the connector/sling/STRING assembly is correct.



- Verify that the STRING correctly positions the connector.



- Reinstall the connectors. If applicable, reinstall the CAPTIVs on the connectors.

## 7. Appendix

- Worn pouch, absorber is unprotected



- Worn pouch, absorber is unprotected



• Stitching OK



• Stitching OK



• Worn stitching



• Tear-webbing is intact



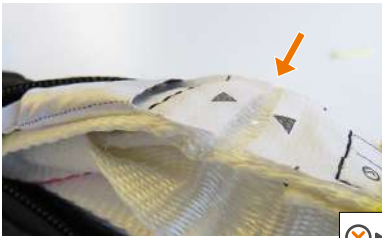
• Absorber has sustained an impact load; absorber has started to tear



• No tearing of the energy absorber



• Absorber has sustained an impact load; absorber has started to tear



• Absorber has sustained an impact load; absorber has started to tear

