

USER GUIDE

EB1536

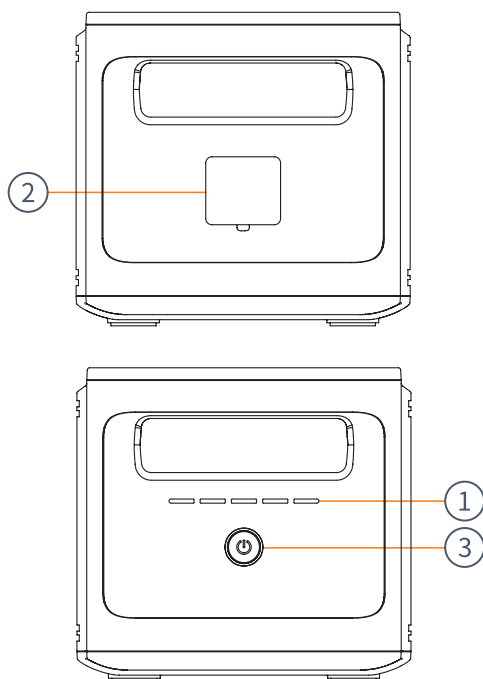
EXPANSION BATTERY




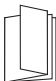
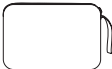
CONTENTS

1.	Product Overview	3
	Overview	3
	Package Contents	3
	Parallel Port	4
	PS1800 PRO Connection	4
2.	Specifications	5
3.	Safety Precautions	6
4.	Contact Us	Back Page

PRODUCT OVERVIEW



Package Contents


Parallel Cable

User Guide

Cable Storage Bag

- ① BATTERY LEVEL INDICATOR
- ② PARALLEL PORT
- ③ MAIN POWER CONTROL

POWER CONTROL BUTTON

This is the master power button, a long press to turn on and a long press to turn off the unit (hold the button until the display turns on/off). When not in use, please turn the unit off.

DISPLAY

Informative display presents the remaining power data. The display will enter sleep mode after 30 seconds of inactivity and wake up when s PS1800 PRO is connected or when the power button is pressed. The device will remain active and won't enter sleep mode if it is either charging or discharging.

PARALLEL PORT

Capacity expansion is accomplished by linking the parallel cable to the PS1800 PRO and EB1536. This interface has the capacity to reach a maximum input and output of 2000W. For guidance on parallel connections, please refer to the illustration on page 5.

PS1800 PRO CONNECTION

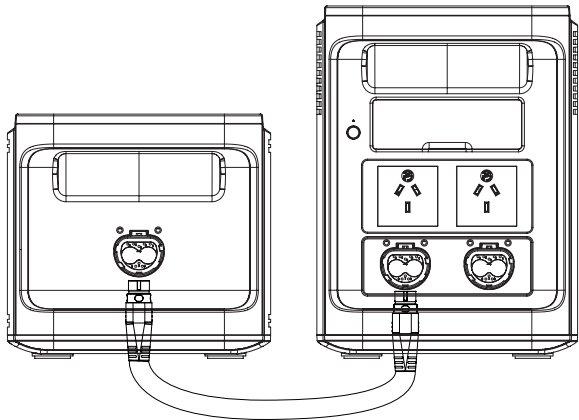
You can connect a maximum of two EB1536s to a PS1800 PRO (sold separately), with a maximum capacity of 4608Wh, using parallel cables. Ensure that both the PS1800 PRO and EB1536's are powered off before making the connection. Once the connection is complete, you will see "S1" and "S2" displayed on the screen of the PS1800 PRO.

After successful parallel connection, the EB1536 can commence charging or discharging. Keep in mind, the EB1536 will charge at a slower rate when it's almost full and will release power faster when used. If there's no incoming charge, the unit with a higher state of charge will charge the unit with a lower state of charge. The display will show the current power status.

Make sure not to connect or disconnect the parallel cable while the products are operational. Only connect or disconnect the cable when the products are powered off to avoid any potential electrical hazards or malfunctions.

WARNING:

Do not connect or disconnect the EB1536 to a PS1800 PRO whilst switched ON.



SPECIFICATIONS

General Specifications	
Model name	EB1536
Dimensions	218 x 403 x 205mm
Weight	13.5Kg
Capacity	1536Wh
Max parallel capacity	4608Wh
Power off current	<500uA
Operating temperature	-10~40°C
Environment humidity	≤90%RH
Cycle life	4000 cycles
Battery Specifications	
Battery type	LiFePO4
Single cell rated voltage	3.2V
Single cell rated capacity	20Ah
Battery pack rated voltage	38.4V
Battery pack output voltage	35~43V
Battery pack rated capacity	1536Wh

SAFETY PRECAUTIONS

For safe operation and optimal performance, the EB1536 Expansion Battery must be operated correctly. Please carefully read, understand, and follow all instructions and guidelines in this user guide. Failure to follow these instructions may result in damage to the unit, property, death, or serious injury.

Disclaimer: While iTechworld has taken every precaution to ensure the accuracy of the contents of this user guide, iTechworld assumes no responsibility for any errors or omissions.

Furthermore, all specifications and functionality may change at any time without notice.

It is best to view our website for the most up-to date information.

WARNING:

People with physical disabilities, visual, sensory, or mental impairments (including children) should not use this device. Children should be supervised to ensure they do not play with the power station.

DANGER:

Do not disassemble or modify the power station; doing so will result in your warranty being void, it may result in a risk of electrical shock, fire, death, or serious injury.

EXPLOSION HAZARD:

Do not use the expansion battery in an environment where flammable fumes or gases are present (such as gas bottles, petrol engines, or lead-acid battery compartments).

WARNING:

Avoid using the expansion battery in extreme temperatures, high humidity, direct sunlight, and near fire.

WARNING:

Please use the cables recommended in this user guide; otherwise, it may result in damage to the power station, a risk of electrical shock, fire, death, or serious injury.

WARNING:

Do not drop the expansion battery.

WARNING:

When not using the expansion battery, turn off the power and unplug the power cord.

WARNING:

Do not use the expansion battery and its accessories to connect equipment if there is a defect.

WARNING:

Do not use the expansion battery in an environment where it will get wet, the unit is not waterproof.

LIMITATIONS OF USE:

Do not use in connection with life support systems or other medical equipment or devices.

LONG TERM STORAGE:

For long-term storage, discharge the power from full to empty once every three months, and then recharge it to 75%. Ensure the power is turned off completely.

iTECHWORLD

THE POWER EXPERT

CONTACT US



1300 483 249



service@itechworld.com.au



www.itechworld.com.au

When it comes to energy storage and creation at iTechworld, we take pride in being one of the biggest names in the industry. Based in Australia, we are a family-owned and operated business. With many more innovative products on the horizon we are committed to constantly raising the bar to provide bigger and better benefits to all our customers Australia-wide.

Whether you're an avid camper, 4WD enthusiast, freedom seeker or camper, we've got your power needs covered. Escape the grid without compromise, minimise your downtime and travel with comfort with our large range of leading products at great prices.

iTechworld. The Power Expert.

LOVE YOUR EB1536? LEAVE A REVIEW

