



1d



2d



CMOS

cmos



easysset

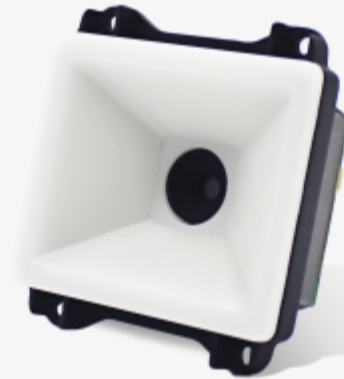


usb



TTL-232

ttl-232



**EM20-80**  
oem scan engines

## Features

### Optimized on-screen barcode capture.

Making it incredibly reader friendly, the CPU powered EM20-80 is ready for whatever smartphone or tablet is presented to it. Not only is the EM20-80 optimized for screens, but also features excellent near field reading, a wide view angle and snappy barcode reading.

### Designed for reliability.

The single PCB construction and vibration proof connectors make the EM20-80 resistant against vibration and improve reliability.

### Compact construction.

The updated EM20-80 is the newest generation in the EM20 series and is lighter, thinner and more compact than ever. No matter the device, the EM20-80 can be easily integrated.

### Power efficiency.

The advanced technology incorporated in the EM20-80 helps reduce its power consumption and lengthens service life.

### Multiple Interfaces.

The EM20-80 supports USB, RS-232 and TTL-232 interfaces to meet diverse industry needs.

## Application Scenarios



mobile  
payment



self service



smart home

# EM20-80 technical specifications

<b>Performance</b>	Image Sensor	640x480 CMOS
	Illumination	White LED
	Depth of Field EAN13 (13mil)	25mm-110mm
	Depth of Field PDF417 (6.67mil)	35mm-45mm
	Depth of Field Data Matrix (10mil)	35mm-50mm
	Depth of Field QR (15mil)	0mm-90mm
	Minimal Print Contrast	30%
	Scan Angle Roll	360°
	Scan Angle Pitch	±40°
	Scan Angle Skew	±45°
	Field of View Horizontal	68°
	Field of View Vertical	51°
	<b>Data capture</b>	1D
2D		PDF 417, QR Code, Micro QR, Data Matrix, Aztec, Maxicode, Chinese Sensible Code, GM Code, Micro PDF417 Code, Code One
<b>Physical</b>	Dimensions (mm)	61.5(W)x65.5(D)x31.9(H)mm (max)
	Weight	33g
	Interfaces	TTL-232, RS-232, USB
	Notifications	Beeper, Green LED Indicator
	Input Voltage	12-pin FPC connector: 3.3-5VDC±5% 4-pin box connector: 3.3-5VDC±5%
	Current @ 3.3VDC Operating	335mA (typical), 479mA (max)
	Current @ 3.3VDC Standby	93mA
	Current @ 5VDC Operating	237mA (typical), 319mA (max)
	Current @ 5VDC Standby	69mA
	Power Consumption	3.3VDC: 1103mW (typical) 5VDC: 1129mW (typical)
<b>Environmental</b>	Ambient Light	0~100,000lux (natural light)
	Operating Temperature	-40°C to 60°C
	Storage Temperature	-40°C to 75°C
	Humidity	5% to 95% (non-condensing)
<b>Accessories</b>	Optional	USB, RS-232, DC5V power adapter with RS-232 cable
	Standard	180mm FFC
<b>Device Management</b>	Software	EasySet (configuration)
<b>Certifications</b>	Certifications	FCC Part15 Class B, CE EMC Class B
<b>Warranty</b>	Warranty	2 years