



SOCKETSCAN® S700

Ergonomic and Elegant

The SocketScan S700 1D barcode scanner with Bluetooth wireless technology scans on paper or screen. It has a light-weight, ergonomic structure, and a long-lasting battery to withstand entire work days. The lights for battery, Bluetooth and scanning notifications make the scanner more intuitive to use. Compatible with all applications in previous Socket Mobile barcode scanners, without software changes.

This scanner is ideal for retail POS, field service, inventory management, asset tracking and more. Use our Companion App for easy set up and configuration.



Certified by Apple® for iOS devices (iPad®, iPhone®, iPod Touch® devices) and compatible with Android and Windows®

Features

- **Bluetooth Wireless Technology** - Connects easily to a wide range of Bluetooth enabled smartphones, tablets, notebook and desktop computers
- **Certified by Apple® for iOS devices** - Guaranteed Compatibility - With our SDK integrated in over 700+ applications, Socket Mobile scanners are one of the most natively integrated scanners available today. Socket Mobile Scanners are also 100% compatible with any application out-of-the-box in HID (keyboard emulation) mode.
- **Compatible with all Android and Windows devices and applications**
- **Scanning** - Reads all common 1D / linear and stacked barcodes
- **Exceptional Ergonomics** - Small, lightweight, and fits perfectly in the hand for comfortable use over extended periods
- **Long-Lasting, Replaceable Battery** - Power to last over 16 hours
- **User Indicators** - Intuitive LEDs, beeps, and vibrations let users know battery, Bluetooth connection and scanning status
- **User Feedback** - Audible tones and hand pulsation
- **Protective Material** - Made with antimicrobial material for protection against potentially harmful bacteria
- **Color Options** - Blue, green, red, white and yellow colors enable style, corporate-branding for personalization and in easy to find in varying work environments
- **Application Integration** - Socket Mobile's Capture SDK enables integration in your applications to improve business productivity with fast, efficient and reliable data transfer over Bluetooth wireless technology
- **Wearable** - Includes wrist strap. Holster, lanyard and retractable clip available (sold separately)
- **Designed and Assembled in the USA**
- **Developer Support Available**
- **1-Year Warranty**



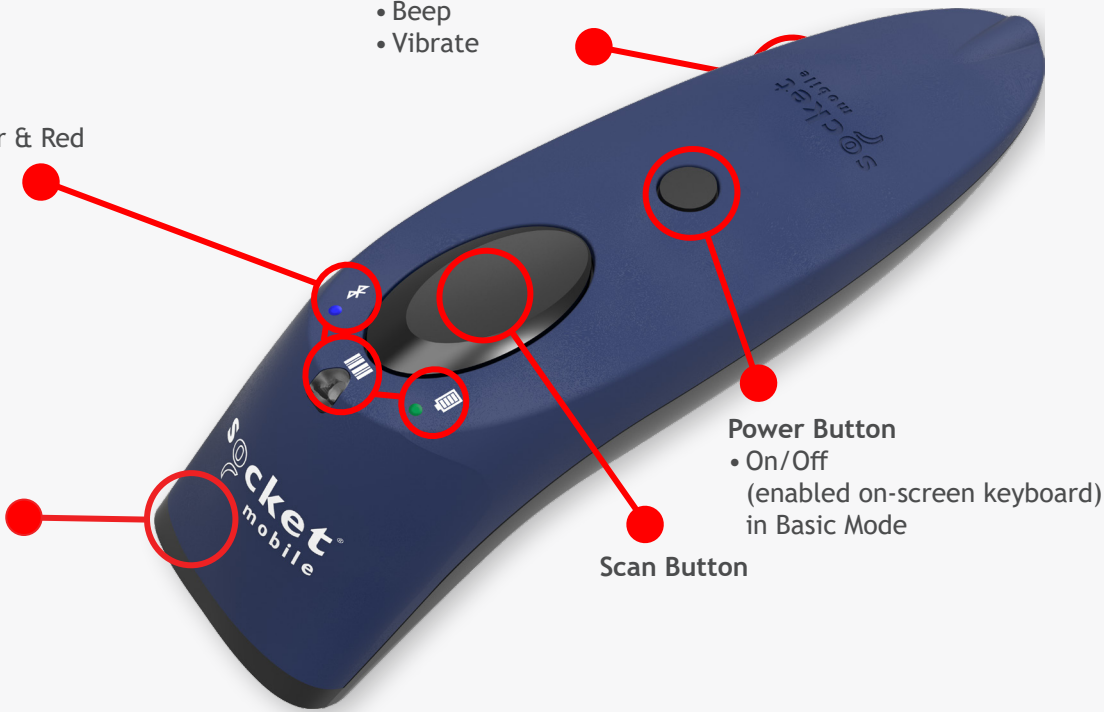
Status Indicators

- Beep
- Vibrate

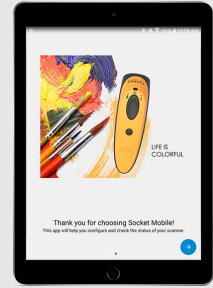
Intuitive LED Indicators

- Battery LED: Green, Amber & Red
- Bluetooth LED: Blue
- Scan LED: Green and Red

Weight/Mass
• 4.0 oz. (113 g)



- (1) SocketScan S700, 1D Imager Barcode Scanner
- (1) Charging Cable
- (1) Wrist Strap
- (1) Get Started Insert



Socket Mobile Companion
Download for Free!

The S700 is available in 5 colors:

- Blue (SKU# CX3360-1682)
- Green (SKU# CX3395-1853)
- Red (SKU# CX3391-1849)
- Yellow (SKU# CX3393-1851)
- White (SKU# CX3397-1855)

OPTIONAL ACCESSORIES

Charging Stand
SKU# AC4076-1538



Great for using AutoScan Mode

Charging Dock
SKU# AC4133-1871



Ideal as a desktop charger

Durable Retractable Clip
AC4130-1828



Provides quick access to scanner

Holster
AC4131-1829



Safe and accessible placement

Lanyard - Black
AC4100-1692



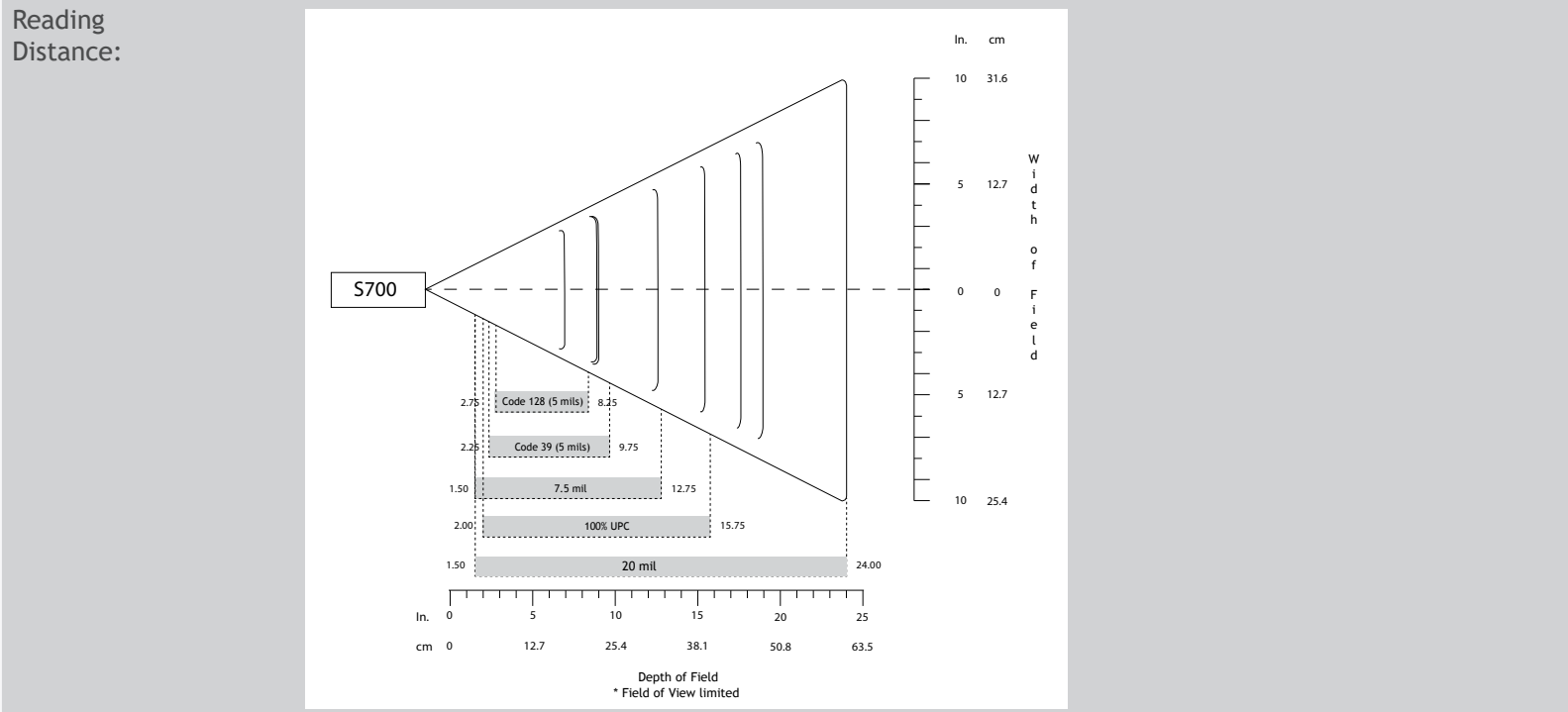
Great for hanging around your neck

WARRANTY

Scanner:	Standard one year limited warranty
Accessories:	90 days
Extended Warranty: (sold separately)	www.socketmobile.com/socketcare



Default Barcode Symbologies:	Code 39, Code 128, EAN-13/JAN, EAN-8/JAN, GS1 Databar, GS1 Databar Expanded, GS1 DataBar Limited, GS1-128, Interleaved 2 of 5, UPC A, UPC E0
Supported Barcode Symbologies:	Bookland EAN, Chinese 2 of 5, Codabar, Code 11, Code 39, Code 93, Code 128, EAN-13/JAN, EAN-8/JAN, GS1 Databar, GS1 Databar Expanded, GS1 DataBar Limited, GS1-128, Interleaved 2 of 5, ISBT 128, Korean 3 of 5, Matrix 2 of 5, MSI, Plessey, UPC A, UPC E0, UPC E1
Scan Angle:	53°
Optical Resolution:	4 mil/0.1mm
Print Contrast:	30% minimum



1D codes 5.7 to 50.8 cm (2.25 to 13.39 in) Resolution
Depends on barcode size, symbology, label media, Narrow and Wide ratio scan angle

BATTERY

Battery:	2 AA NiMH rechargeable batteries (replaceable battery)
Charge Time:	~6 Hours
Battery Life: Per Full Charge:	Standby time: over 20 hours Active Scan Time: 80,000 scans within 9 hours (based on 2 scans every 1 second) 7,000 scans within 7 hours (based on 1 scan every 4 seconds)
Note:	Battery life varies depending on ambient temperature, ambient light and age of battery.

SCANNER TYPE

Technology:	1D Barcode Linear Imager
Aimer:	Visible Red LED (625 nanometers)

BLUETOOTH (WIRELESS CONNECTION)

Bluetooth Radio:	Class 2 Bluetooth, version 2.1 + EDR (Enhanced Data Rates) with 56-bit data encryption
Bluetooth Range:	Up to 10 m (33 ft.) depending on environment, range limit is usually due to the Host Device (phone, tablet or notebook)
Bluetooth Profiles:	Basic Mode - Human Interface Device (HID)*, Application Mode - Serial Port Profile (SPP) and Application Mode - MFi-SPP. Some Operating Systems or smartphone/tablet models may support only one profile. *By default, the scanner is set to Basic Mode (HID).

Ambient Light:	From 0 to 100 000 lux From pitch black to direct sun light
Operating Temperature:	0° to 45° C (32° to 113° F)
Storage Temperature:	-40° to 70° C (-40° to 158° F)
Relative Humidity:	95% at 60° C (140° F) (non-condensing)
Drop Specifications:	4 ft. to linoleum

OPERATING SYSTEM COMPATIBILITY

Android OS: Basic Mode (HID)* & Application Mode (SPP)	Mac OS: Basic Mode (HID)* only
Apple iOS: Basic Mode (HID)* & Application Mode (MFi-SPP)	Windows OS: 10, 8, and 7: Basic Mode (HID)* & Application Mode (SPP)
Compatible with devices supporting Basic Mode (HID)* protocol	
<i>*By default the scanner is in Basic Mode (HID). No software installation required.</i>	

Certified by Apple® for iOS devices (iPad®, iPhone®, iPod Touch®) and compatible with Android and Windows®.



CERTIFICATION & REGULATORY

Bluetooth SIG:	Declaration ID: D030473 QD ID: 82009
Electrical Safety:	Certified to IEC 60950-1, UL 60950-1, CAN/CSA C22.2
Environmental:	Environmental: RoHS EN 50581
EMI / RFI:	FCC Part 15 Class C, RSS 210, iCES 003, C-Tick, CISPR 22, CE EN55022, EN55024, TELEC FCC ID: T9J-RN42 IC ID: 6514-RN42 Telec: 201-125799
LED Safety:	IEC/EN 62471 (EXEMPT GROUP)



COMMON USES

Retail/Point of Sale	Warehouse management
Office use	Shipping and Receiving
Healthcare	Field Sales/Service
Mobile Tracking	Hospitality

socketmobile.com	sales@socketmobile.com		
Toll-Free: +1 800 552 3300 (USA/Canada)	Asia Pacific: +1 510 933 3122	EMEA & Russia:	+41 62 834 0780
France: +33 970 462 241	Germany: +49 9401 5299 052	Japan:	+8190 9808 0518
Latin America: +1 510 933 3153	Switzerland: +41 62 834 07 80	UK/Ireland/South Africa:	+44 (0) 1252 761403 +44 7787 112109

© 2018 Socket Mobile, Inc. All rights reserved. Socket®, the Socket Mobile logo, SocketScan®, DuraScan®, Battery Friendly® are registered trademarks or trademarks of Socket Mobile, Inc. Microsoft® is a registered trademark of Microsoft Corporation in the United States and other countries. Apple®, iPad®, iPad Mini®, iPhone®, iPod Touch®, and Mac iOS® are registered trademarks of Apple, Inc., registered in the U.S. and other countries. The Bluetooth® Technology word mark and logos are registered trademarks owned by the Bluetooth SIG, Inc. and any use of such marks by Socket Mobile, Inc. is under license. Other trademarks and trade names are those of their respective owners.