



# Connection Guide

## Wi-Fi Signature Pads

Copyright © 2018 Topaz Systems Inc. All rights reserved.

For Topaz Systems, Inc. trademarks and patents, visit [www.topazsystems.com/legal](http://www.topazsystems.com/legal).

## Table of Contents

<b>Overview</b> .....	<b>4</b>
Signature Pad Conversion.....	4
<b>Software Installation and Set-Up</b> .....	<b>4</b>
Step 1: Set-Up.....	4
Step 2: Topaz SigPlus Installation.....	4
Step 3: Selecting the Right Configuration Mode.....	5
<b>Option 1: Computer Mode</b> .....	<b>6</b>
Step 1: Custom SSID and Password.....	6
Step 2: Programming the Wi-Fi Pad.....	7
Step 3: Connect to the Wi-Fi Pad.....	8
Step 4: Test with the Topaz DemoOCX Utility.....	9
Optional Step 5: Sleep Timer.....	9
<b>Option 2: Router Mode</b> .....	<b>10</b>
Step 1: Router SSID and Password.....	10
Step 2: Channel Set-Up.....	11
Step 3a: Network Set-Up.....	11
Step 3b: Manual Network Set-Up for Advanced Users.....	11
Step 4: Programming the Wi-Fi Pad.....	12
Step 5: Test with the Topaz DemoOCX Utility.....	13
Optional Step 6: Sleep Timer.....	13
<b>Operating Information</b> .....	<b>14</b>
LED Meanings.....	14
Power-Save Feature.....	14
Charging & Battery Length.....	14

## Table of Contents

<b>Troubleshooting .....</b>	<b>15</b>
Help .....	15
COM Port Status .....	15
<i>Verify Network Port.....</i>	<i>15</i>
<i>Verify USB Config. Port .....</i>	<i>15</i>
Fix COM Port Conflicts.....	16
<b>Advanced Configuration, Troubleshooting, and FAQs .....</b>	<b>16</b>

## Overview

Topaz Wi-Fi Pads are pre-configured and ready for use with your PC “out-of-the-box” in “Computer Mode”. The pad can be programmed via the USB port on the back of the unit to connect via Wi-Fi directly to a computer or through a router. The pad data is sent over a Wi-Fi network interface to a virtual serial com port on the PC, to which the application connects.

### *Signature Pad Conversion*

Wi-Fi pads can be purchased new or with conversion options for existing pad users. The following “hard-wired” signature pad models can be converted to wireless (Bluetooth or Wi-Fi) models: T-LBK750, T-LBK755, T-LBK766, or T-LBK57GC.

For more information, contact the Topaz Sales Team at: [www.topazsystems.com/contact](http://www.topazsystems.com/contact).

## Software Installation and Set-Up

### *Step 1: Set-Up*

Ensure the following:

1. Wi-Fi is set-up and working on your PC before continuing.
2. COM 7 and COM 9 are available to ensure proper operation. To do this, go to the section “[Troubleshooting: COM Port Status](#)” at the end of this guide.

### *Step 2: Topaz SigPlus Installation*

1. Download and run “TopazWiFiConfig” from: [www.sigpluspro.com/wifi](http://www.sigpluspro.com/wifi). When prompted by the installer, look on the back of the signature pad to find the signature pad model number, and select the appropriate option.
2. Reboot your system after installation is complete.

**Note:** The USB cable is used for charging the battery and programming the Wi-Fi pad only. Pad data (signature, etc.) cannot be sent via USB.

**Step 3: Selecting the Right Configuration Mode**

The Wi-Fi pad can be configured to work in two modes:

**1. Computer Mode** (factory default):

The Wi-Fi pad connects to an integrated Wi-Fi card or USB Wi-Fi adapter on the PC.

**Custom Configuration is recommended but not required in order to use your pad “out-of-the-box.”**

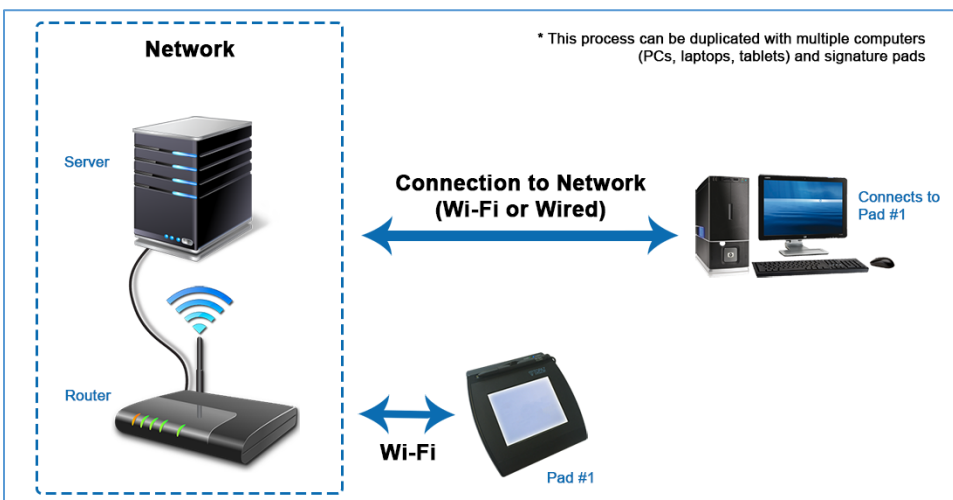


**Note:** A Topaz Wi-Fi signature pad and other Wi-Fi devices cannot connect to the same radio. If your PC needs to connect to other Wi-Fi devices (such as a Wi-Fi router) at the same time it is connected to the pad, a 2<sup>nd</sup> Wi-Fi adapter must be added.

**2. Router Mode:**

The Wi-Fi pad connects to a router. The PC connects to the same router to gain access to the pad.

**Custom Configuration is required.**



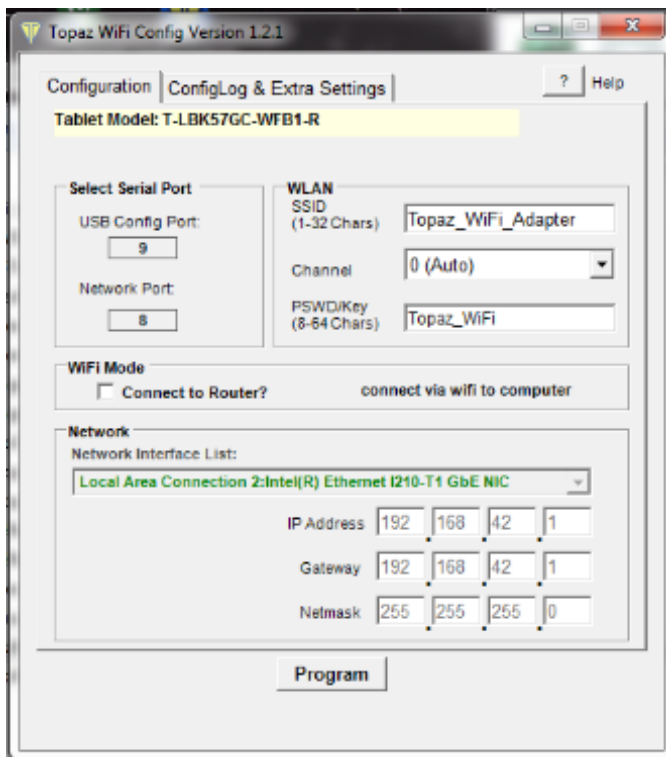
## Option 1: Computer Mode

Computer Mode is the factory default mode of the pad. This mode is ready for use “out-of-the-box.”

### Step 1: Custom SSID and Password

A unique SSID and Password are recommended for your Topaz device. To update your SSID and Password from the default settings, do the following:

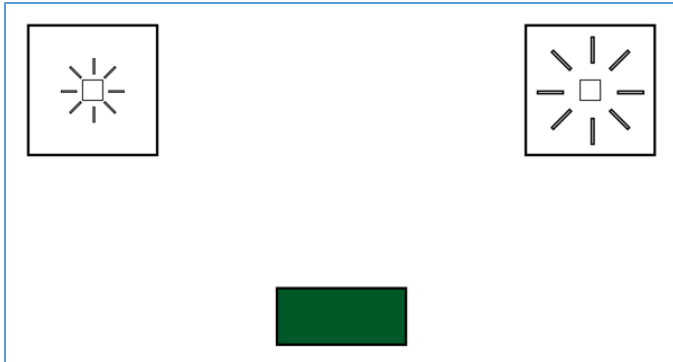
1. Connect the micro-USB cable from the pad to your PC.
2. Leave the pad turned OFF.
3. Open the “Topaz Wifi Config” App by selecting the desktop shortcut placed during installation, or find the app located in C:\Program filesx86\Topaz Systems\Wifi.
4. Update the SSID and Password within the section “WLAN.”



### Step 2: Programming the Wi-Fi Pad

Put the signature pad into “Backlight Mode” mode by following these steps:

1. Power ON the pad while pressing the pen tip in the upper-right hand corner of the display. The following will be loaded to the pad’s display.



Leave the pad in this mode until programming is complete. If you do not see this image on your display, unplug the pad and try again.

2. Select the “Program” button.

**Note:** SSID and Password are the only settings that should be changed at this point. Make sure “Connect to Router” remains un-checked.

3. Wait for programming to complete (this may take up to a minute).

**Note:** To conserve battery, the pad will automatically shut off after 5 minutes of use unless an application is connected. This can be changed later in [Optional Step 5](#).

4. A window will display “All Updates Completed”. Select “OK”. Exit “Backlight Mode” by selecting the green box on the pad’s display with the signature pen.

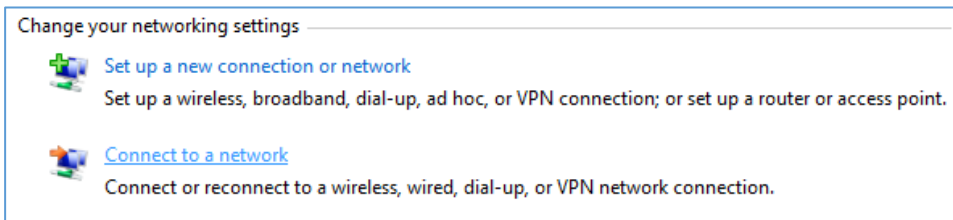
**Note:** Backlight levels do not need to be adjusted. It is OK to turn off the unit while it is in this mode.

**Step 3: Connect to the Wi-Fi Pad**

1. In the system tray (bottom right of your PC screen), select the “Network” icon.



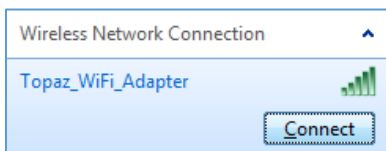
**Note:** If the network icon is not available in the system tray, go to “Control Panel”, open the “Network and Sharing Center” window, and then click on “Connect to a network”.



2. Select the SSID of your Wi-Fi pad. Default SSID is: Topaz\_WiFi\_Adapter.

**Note:** If you check the box “connect automatically,” your PC will automatically connect every time the pad is powered on and you will not need to repeat this step.

3. Select Connect.



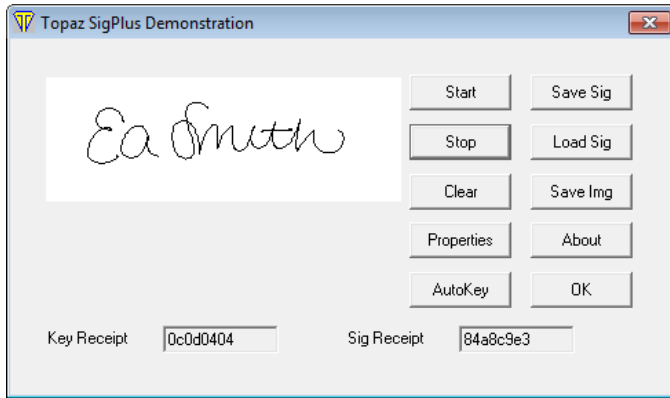
4. Enter the case sensitive password. Default password is: Topaz\_WiFi



**Step 4: Test with the Topaz DemoOCX Utility**

Test the signature pad connectivity with DemoOCX by following these steps:

1. Open “DemoOCX” by selecting the shortcut on your desktop.

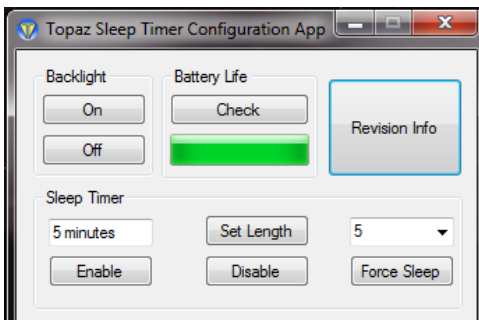


2. Click the “Start” button and then sign on your pad. The signature will appear on the pad and in DemoOCX window. If the signature does not appear, see the [Troubleshooting](#) section of this guide.

**Optional Step 5: Sleep Timer**

To conserve battery, Wi-Fi models have a sleep timer that by default is set to automatically shut off the pad after 5 minutes of use unless an application is connected. To modify the sleep timer settings of your pad, do the following:

1. Complete all configuration and programming steps of your pad first, and then connect your pad to the PC via Wi-Fi.
2. Run the Sleep Timer App once pad configuration is complete. Open the app from the shortcut placed on your desktop during installation, or at the following location:  
*C:\Program Files (x86)\Topaz Systems\Tools\SleepTimer\TopazSleepTimer.exe.*



**Note:** If your pad shuts off during programming, simply repeat the process.

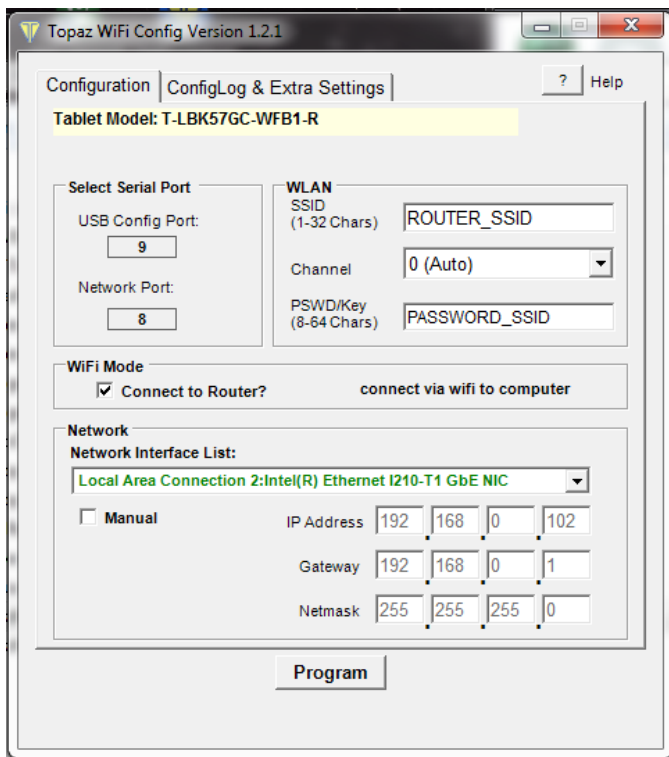
## Option 2: Router Mode

### Step 1: Router SSID and Password

In order for your pad to connect to a router, it must use the router's SSID and password. To update your SSID and password from the default settings, do the following:

1. Connect the micro-USB cable from the pad to your PC.
2. Leave the pad turned OFF.
3. Open the "Topaz Wifi Config" App by selecting the desktop shortcut placed during installation, or find the app located in C:\Program filesx86\Topaz Systems\Wifi.
4. Check the box located in the "Wi-Fi Mode" section labeled "Connect to router".
5. Update the case sensitive SSID and Password within the "WLAN" section.

**Note:** Do not enter the default SSID and PASSWORD used in computer mode.

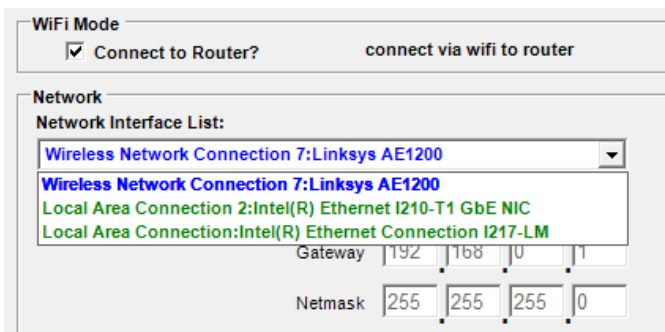


### Step 2: Channel Set-Up

If your router is configured to operate on a specific channel, select the “channel” drop-down menu, and then select the same channel number. Otherwise, leave the channel set to 0 (auto).

### Step 3a: Network Set-Up

1. Select the network interface card you want to use from the dropdown menu.
  - [Wi-Fi adapters](#) will be listed in [blue text](#)
  - [Ethernet cards](#) will be listed in [green text](#).
  - The Wi-Fi config utility will automatically choose an available network address based on the network card selected.
  - If there is only one card listed, then there is nothing to do in this step.



WiFi Mode

Connect to Router?      connect via wifi to router

Network

Network Interface List:

Wireless Network Connection 7:Linksys AE1200

Wireless Network Connection 7:Linksys AE1200

Local Area Connection 2:Intel(R) Ethernet I210-T1 GbE NIC

Local Area Connection:Intel(R) Ethernet Connection I217-LM

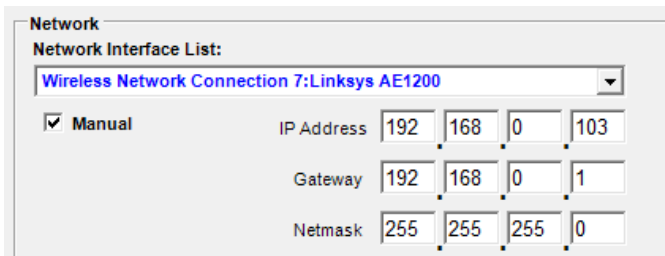
Gateway | 192 | 168 | 0 | 1

Netmask | 255 | 255 | 255 | 0

### Step 3b: Manual Network Set-Up for Advanced Users

1. Check the “Manual” checkbox to enter a manual network address instead of using the address provided by this utility.

**Note:** Manual network parameters are recommended for advanced users only. Topaz Tech Support does not troubleshoot manual address parameters.



Network

Network Interface List:

Wireless Network Connection 7:Linksys AE1200

Manual

IP Address | 192 | 168 | 0 | 103

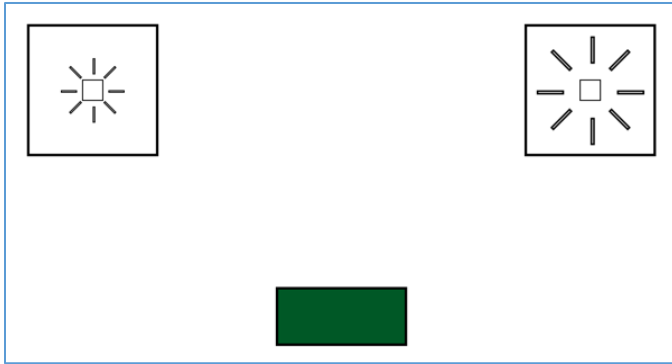
Gateway | 192 | 168 | 0 | 1

Netmask | 255 | 255 | 255 | 0

### Step 4: Programming the Wi-Fi Pad

Put the signature pad into “Backlight Mode” mode by following these steps:

1. Power ON the pad while pressing the pen tip in the upper-right hand corner of the display. The following will be loaded to the pad’s display.



Leave the pad in this mode until programming is complete. If you do not see this image on your display, unplug the pad and try again.

2. Select the “Program” button.

**Note:** SSID and password are the only settings that should be changed at this point. Make sure “Connect to Router” remains un-checked.

3. Wait for programming to complete (this may take up to a minute).

**Note:** To conserve battery, the pad will automatically shut off after 5 minutes of use unless an application is connected. This can be changed later in [Optional Step 6](#).

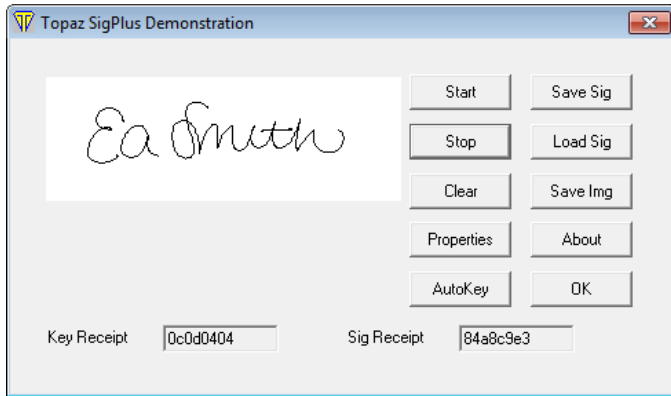
4. A window will display “All Updates Completed”. Select “OK”. Exit “Backlight Mode” by selecting the green box on the pad’s display with the signature pen.

**Note:** Backlight levels do not need to be adjusted. It is OK to turn off the unit while it is in this mode.

**Step 5: Test with the Topaz DemoOCX Utility**

Test the signature pad connectivity with DemoOCX by following these steps:

1. Open “DemoOCX”, found on your desktop. Click “Start”–Sign on your signature pad, and the signature will appear in the box.

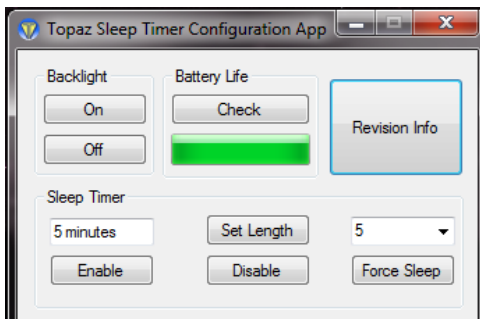


If the signature does not appear, see the [Troubleshooting](#) section at bottom of this guide.

**Optional Step 6: Sleep Timer**

To conserve battery, Wi-Fi models have a sleep timer that by default is set to automatically shut off the pad after 5 minutes of use unless an application is connected. To modify the sleep timer settings of your pad, do the following:

1. Complete all configuration and programming steps of your pad first, and then connect your pad to the PC via Wi-Fi.
3. Run the Sleep Timer App once pad configuration is complete. Open the app from the shortcut placed on your desktop during installation, or at the following location:  
*C:\Program Files (x86)\Topaz Systems\Tools\SleepTimer\TopazSleepTimer.exe.*



**Note:** If your pad shuts off during programming, simply repeat the process.

## Operating Information

### LED Meanings

#### Left LED:

<b>RED</b> Steady	<i>Battery is charging.</i>
<b>GREEN</b> Steady	<i>Unit is on.</i>
<b>GREEN</b> Slow Flash	<i>Unit is on, but battery is low (&lt;15%).</i>
<b>GREEN</b> Rapid Flash (20x)	<i>Battery is critically low and must be charged before use. Once the green light flashes 20 times, the unit will turn off.</i>

#### Right LED:

<b>BLUE</b> Slow Flash	<i>The access point (computer mode) is configured and ready.</i>
<b>BLUE</b> Steady	<i>A computer has connected to the tablet.</i>
<b>BLUE</b> Blinking	<i>Data is being sent or received.</i>

### Power-Save Feature

The tablet will shut down if there is no computer connected to it for 5 minutes. To turn the tablet back on, you must switch the power switch to the OFF position and then back to ON.

### Charging & Battery Length

The pad is charged via the micro-USB port on the back of the wireless housing. The times below are from a full charge to low battery indication, with the unit always ON and the wireless module connected. Turning off the pad in between uses will give an even longer use time.

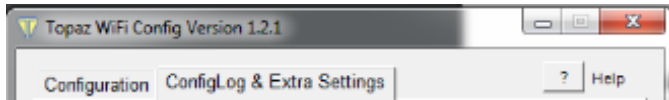
<b>MODEL SERIES</b>	<b>BATTERY LENGTH</b>
T-LBK766SE-WFB	Approximately 8 hours
T-LBK755SE-WFB	Approximately 12 hours
T-LBK750SE-WFB	Approximately 16 hours

**Note:** The provided Topaz charger allows the wireless pad to be charged twice as fast as a typical USB port.

## Troubleshooting

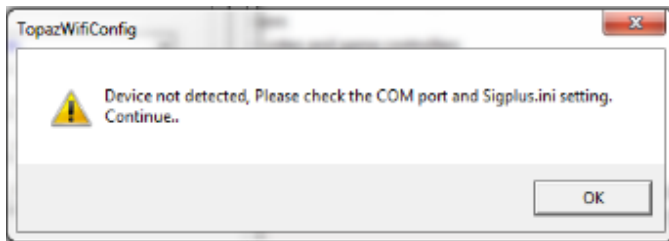
### Help

Select the “?” button in the “Topaz WiFi Config” app to open the Wi-Fi User Guide.



### COM Port Status

If the “Topaz WiFi Config” app cannot recognize the Topaz device, an error message will be displayed.



Take the following steps to fix this issue.

#### Verify Network Port

1. Go to “Start” → “Control Panel” → “Device Manager”.
2. Expand the “Ports (COM & LPT)” section. Verify that “Topaz Network Port (COM8)” is listed.

**Note:** This port should always be listed, even if power to the pad is OFF.

3. Leave the Device Manager open.

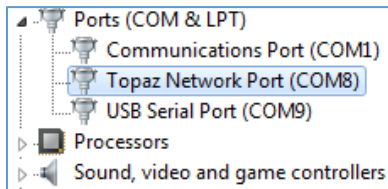
#### Verify USB Config. Port

1. Connect the micro-USB cable from the pad to your PC.
2. Turn the pad power ON.

**Note:** The pad automatically shuts off after 5 minutes if not connected to an application, to conserve battery.

3. Verify that “USB Serial Port (COM9)” is listed.

**Note:** The “USB Serial Port” will only be listed when the pad power is ON.



4. If one or both COM ports are missing (network port and/or USB config port), reboot your PC and verify the COM ports a second time. If one or both COM ports are still not listed, re-install the software.

### **Fix COM Port Conflicts**

If another device is listed on COM 8 or COM 9, a conflict might prevent proper operation. To change the COM port number of a non-Topaz device, follow these steps:

1. Double click on the device name; go to “Port Settings”, then select the “Advanced...” button.
2. Change the COM port number to one that is not listed as “(in use)”.

For assistance, contact Topaz Tech Support at:  
[www.topazsystems.com/contact\\_techsupport.html](http://www.topazsystems.com/contact_techsupport.html).

## **Advanced Configuration, Troubleshooting, and FAQs**

For assistance with advanced configuration, or for more advanced troubleshooting and common FAQs, view the Advanced Wireless Pad Guide at:  
[www.topazsystems.com/products/wireless\\_advancedguide.pdf](http://www.topazsystems.com/products/wireless_advancedguide.pdf).