

CIPHER LAB
Smarter

1500 series



General Handheld Scanner

Bringing retail productivity and performance up to speed, the 1500 series of scanners offers powerful reliability with efficiency. Ideal for a wide range of applications from retail to healthcare and post offices, the 1500 scanner is not only advanced, but its ergonomic design also provides extreme durability – day in, day out.



1500 series

General Handheld Scanner

1500 Series Scanners from CipherLab

Accelerate your business

Handheld scanners are much faster than human fingers. Pull the trigger and the work is done instantly: complete series, update inventories, check patient records, and record production line parts and activities. Handheld scanners accelerate work with error-free capture of critical information, keeping your company data up to date and up to the minute.

Cut costs

CipherLab scanners are versatile, agile, and priced right for long-lasting value. Your company benefits from years of use, backed by a manufacturer honored in the industry for its innovative, reliable products and customer service. The 1500 series scanners capture data from regular to long barcodes with a choice of linear imager, 2D imager, or laser. Together with *Bluetooth*[®] cordless and corded applications, the 1500 series scanners help you run business more efficiently with improved operations.

Go where the work takes you

The 1500 series includes wireless scanners to unleash workers, so they can go where the work is and get more done, in more places. Our 1500 series *Bluetooth*[®] scanners connect with the communication stand up to 90 meters (295 feet) away. Beyond that, they keep working by storing information until the scanner is back in range.



Smart solutions with immediate payoffs

Accelerate receiving with fast, reliable, low-cost CipherLab 1500 handheld scanners

European retail giant Valora deployed 1,100 CipherLab 1500 scanners to improve product receiving in its Swiss sales outlets.



"After performing extensive tests, it was clear that the CipherLab scanner performed much better than any of the other solutions. We had no previous experience with CipherLab and were positively surprised with its error-free scans, reliability, and the convincing value for money it offers."

Christian Wurger, Head of the Corporate IT Operation/ Support, Valora, Switzerland

Streamline tracking and delivery with wireless CipherLab *Bluetooth*[®] scanners

To ensure better tracking and delivery of mail and goods, Brazil's ECT, the largest post office in Latin America, relies on the flexibility and productivity of CipherLab *Bluetooth*[®] scanners.



"With the new scanners, employees can easily reach the items to scan. They can walk around outdoors and scan packages in the unloading/departing zones, allowing them to work faster and get more work done. And the database is always updated when they are back in wireless range."

Marcel Gomes, Complex Solutions Provider for ECT, Brazil.

Update stock and reply distribution requirements in real time with wireless CipherLab *Bluetooth*[®] scanners

To ensure accurate CD/DVD replenishment, ASDA/Wal-Mart combines the wireless connectivity of CipherLab *Bluetooth*[®] scanners and Smartphones/PDAs to instantly send stocking requirements to the distribution center.



"After searching worldwide for scanners with good communication capabilities, we found CipherLab *Bluetooth*[®] scanners with high-quality and reliable performance. CipherLab scanners not only provide real-time stocking updates, but also record deliveries made to the actual supermarkets, which improves the efficiency of our business operation."

Altaf Sadique, CEO, Gane Data LTD., United Kingdom

Snappy scanning, speedy decoding

The 1500 series with linear imaging reader scan and decode barcodes up to 520 times per second to speed work, eliminate rescans and keep up with your fastest operation. This high speed delivered with low power consumption makes auto-sense scanning very effective.

Wireless freedom

Range of Operation

The 1500 series *Bluetooth*® wireless scanners have a 90-meter line-of-sight range from the communication stand. If it's not in range, with the optional linear imager and laser scanners, the scanner's buffer memory holds up to 256 scans in reserve, ready to transmit automatically when you're back in range again. Or, use batch mode to record over 32,000 scans – that's freedom to roam widely. The 1500 *Bluetooth*® scanner with 2D reader has a buffer memory of 10 K or 4 MB in batch mode.

House of Wireless Power

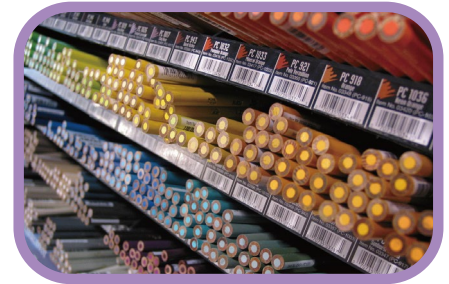
CipherLab offers you the multi-shift service with the 1500 series *Bluetooth*® scanner. Without interruption of workflow, users get to finish work more productively and efficiently.

A Great Variety at Your Fingertips

Every business is different and has different scanning needs, which is why CipherLab have a broad range of scanners to suit any businesses whatever their needs. The 1500 series comes in a range of varieties. The linear imager scanner offers the option of reading long barcodes, for example the ones on bills, making it suitable for utility companies, banks, and collecting agencies. The option of 2D imager is good for scanning barcodes on medicine packaging or hospital equipments making them suited for pharmaceutical or hospitals.

PC Software to Custom-Configure Scanners to Any Environment

CipherLab **ScanMaster** software provides comprehensive tools to configure any scanner, such as enabling and disabling hands-free scanning, choosing edit format and symbology types, plus more. With ScanMaster, scanners can be easily customized to fit every working environment. ScanMaster for PC is included with all CipherLab scanners. In addition, 1500 series is also supported by **CipherConnect** which is a COM-to-key utility designed for CipherLab *Bluetooth*® scanners to work as an input device for smart devices, such as Smartphone or PDA. The software enables intensive data collection and transmission via CipherLab *Bluetooth*® scanner to the smart device.



1500 series

General Handheld Scanner



		1500P	1560P	1502	1562	1504P	1504A	1564A	
Category		Linear Imager		Laser		2D Imager			
		Corded	Bluetooth® Class 2 (2.4 GHz) Version 4.0+EDR	Corded	Bluetooth® Class 2 (2.4 GHz) Version 2.1+EDR	Corded		Bluetooth® Class 2 (2.4 GHz) Version 4.0+EDR	
RF Communication of Bluetooth® scanner	Coverage	--	90 m ² / 295 ft. line of sight	--	90 m ² / 295 ft. line of sight	--		90 m ² / 295 ft. line of sight	
	Standard profile	--	SPP, HID	--	SPP, HID	--		SPP, HID	
Optical sensor		CCD Linear Sensor 2500 pixels		Laser		CMOS Image Sensor 1280 x 800 pixels	CMOS Image Sensor 752 x 480 pixels		
Light source		Red LED 625 nm	Red LED 618-626 nm	Visible laser diode at 650 ± 15 nm		Warm White LED (2x)	625 ± 5 nm LEDs (2x)		
Resolution		3 mil		4 mil		3 mil - 1D barcode / 5 mil - 2D barcode			
Depth of field	Code 39 3 mil	6.9 to 10.7 cm / 2.7 to 4.2 in.		Code 39 4 mil: 1 to 4 cm / 0.4 to 1.6 in.		4 to 9 cm / 1.6 to 3.5 in.	6.9 to 10.7 cm / 2.7 to 4.2 in.		
	Code 39 5 mil	6 to 17 cm / 2.4 to 6.7 in.		1 to 12 cm / 0.4 to 4.7 in.		3 to 14.5 cm / 1.2 to 5.7 in.	3.6 to 18.5 cm / 1.4 to 7.3 in.		
	UPCA 13 mil	4 to 40 cm / 1.6 to 15.7 in.		1.5 to 51.5 cm / 0.6 to 20.3 in.		3.5 to 30 cm / 1.4 to 11.8 in.	4 to 30.5 cm / 1.6 to 12 in.		
	PDF417 5 mil	--		--		3 to 10.5 cm / 1.2 to 4.1 in.	7.1 to 11.4 cm / 2.8 to 4.5 in.		
	QR Code 10 mil	--		--		2 to 16 cm / 0.8 to 6.3 in.	2.5 to 16.5 cm / 1.0 to 6.5 in.		
Long barcode 8.2 cm, 8 mil		1500P: 10 to 20 cm / 3.9 to 7.9 in		--		--	--		
Scanning angle		Pitch ± 70° Skew ± 70°		Pitch ± 65° Skew ± 50°		Pitch ± 60° Skew ± 60°			
Minimum PCS		25%		45%		25%	30%		
Scan rate		520 scans/ second		100 scans/ second		60 scans/ second			
Ambient illumination		100,000 lux							
Hands-free scanning		Auto-sense and continuous modes		Continuous mode		Auto-sense and presentation modes			
Barcodes support		Codabar, Code 39, Code 93, Code 128, GS1 DataBar (RSS), Industrial 2 of 5, Interleave 2 of 5, ISBT-128, Italian and French Pharmacodes, Matrix 2 of 5, MSI, Plessey, Telepen, UPC / EAN / GS1-128, and more			1D: All of the barcodes that 1500 series 1D scanners can support 2D: PDF417, MicroPDF417, DataMatrix, QR code, Micro QR code, Aztec, Maxicode		1D: All of the barcodes that 1500 series 1D scanners can support except French Pharmacodes, Plessey and Telepen 2D: PDF417, MicroPDF417, Composite, RSS, TLC-39, Datamatrix, QR code, Micro QR code, Aztec, Maxicode Postal Codes: US PostNet, US Planet, UK Postal, Australian Postal, Japan Postal Dutch Postal (KIX)		
Programmable features		Data editing, interface selection, symbology configuration							
Language support		US and UK English, French, Italian, Belgian, Norwegian/Swedish, Spanish, Portuguese, German, Japanese and Turkish							
Dimension L x W x H		15.3 x 6.1 x 9.3 cm / 6.0 x 2.4 x 3.7 in.							
Weight without cable / with battery		1500P: 149 g / 5.2 oz.	173 g / 6.1 oz.	149 g / 5.2 oz.	177 g / 6.2 oz.	149g / 5.2 oz.	154 g / 5.4 oz.	185 g / 6.5 oz.	
Color		Black							
Switch		Tactile Switch							
Memory for Bluetooth® scanner receiver buffer / batch mode		--	4 K / 512 K	--	4 K / 512 K	--	10 K / 4 MB		
Working hours for Bluetooth® scanner		--	36 hours based on 1 scan / 5 seconds	--	24 hours based on 1 scan / 5 seconds	--	26 hours based on 1 scan / 5 seconds		
Voltage		+5 V ± 10% / 3.7 V 800 mAh Li-ion battery							
Power consumption ² Standby / Operating		1500P: 20 mA / 286 mA	20 mA / 250 mA	35 mA / 210 mA	25 mA / 210 mA	60 mA / 420 mA	22mA / 150 mA	22mA / 166 mA	
Temperature		Operating: 0°C to 50°C / 32°F to 122°F Storage: -20°C to 60°C / -4°F to 140°F							
Humidity		Operating: 10% to 90% Storage: 5% to 95%							
Impact resistance		1.5 m (4.9 ft) multiple drops onto concrete	1.2 m (3.9 ft) multiple drops onto concrete						
Ingress protection		IP30							
Electrostatic discharge		±8 kV contact ±15 kV air							
Regulatory Compliance		BSMI, CE, RCM, FCC, IC	BSMI, CE, RCM, FCC, IC, NCC, SRMC, JRL	BSMI, CE, RCM, FCC, IC, KC	BSMI, CE, RCM, FCC, IC, KC, NCC, SRMC, JRL	BSMI, CE, RCM, FCC, IC, KC		BSMI, CE, RCM, FCC, IC, KC, NCC, SRMC, JRL	
		RoHS, REACH, WEEE, ErP							
Configuration		Setup options include Windows®-based ScanMaster software, by direct connection or printing out barcode settings							
Accessories		USB, RS232 and keyboard wedge cables, hands-free adjustable stand, Three-way desk/wall/auto-sense stand with optional weighted base, communication stand for Bluetooth® scanner provides Bluetooth® communication for up to 7 scanners, single battery charger for Bluetooth® scanner							
Warranty		5 years	3 years	3 years (engine 1 year)		3 years	3 years (engine 1 year)		

1.It is based on communication stand without weighted base. 2.The data is tested with USB interface.



HEADQUARTERS
CipherLab Co., Ltd.
 12F, 333 Dunhua S. Rd., Sec.2
 Taipei, Taiwan 10669
 Tel +886 2 8647 1166
 Fax +886 2 8732 3300
 www.cipherlab.com

CipherLab Electronics Trading (Shanghai) Co., Ltd.
 J Room, 4F, No.728 West Yan'an Rd.
 Changning District, Shanghai
 China 200050
 Tel +86 21 3368 0288
 Toll Free 400 920 0285
 Fax +86 21 3368 0286

CipherLab USA Inc.
 2552 Summit Avenue STE 400
 Plano, Texas, USA 75074
 Tel +1 469 241 9779
 Toll Free 888 300 9779
 Fax +1 469 241 0697

CipherLab Europe
 Flight Forum 40,
 5657 DB Eindhoven,
 The Netherlands
 Tel +31 40 295 1510