

Heckler

Ready To Dock



Console Insert
for Shure SBC 220 or SBC 240
H910

Heckler

With this Heckler Lectern Console Insert, you can seamlessly and conveniently integrate Shure's Networked Docking Charger into your Heckler Lectern.

Features

The docking charger is positioned flush with the Lectern desktop for a clean integrated look.

This product can be installed quickly and securely into the console of a Heckler Lectern, with no tools required.

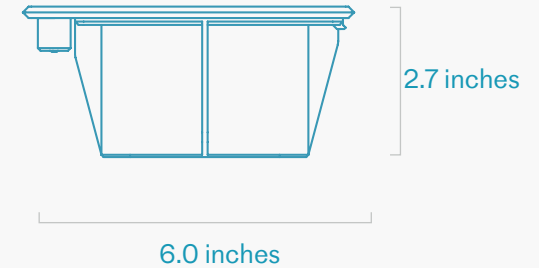
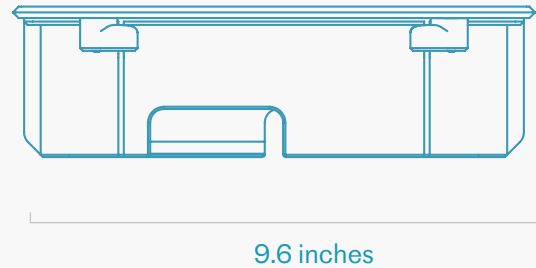
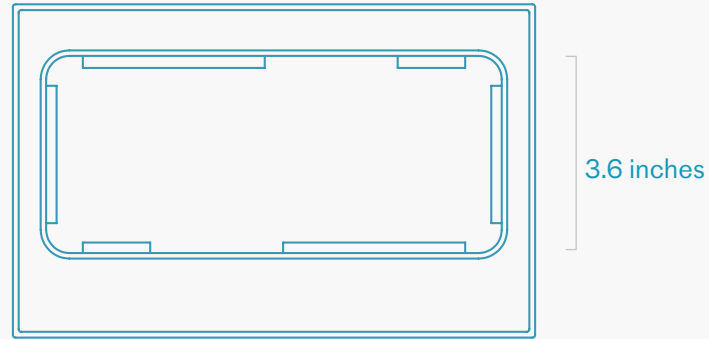
Compatible with Shure SBC 220 or SBC 240 Docking Chargers.



Heckler

Specifications

| | |
|--------------------|---|
| SKU | H910 |
| Product Dimension | 9.6 x 6 x 2.7 inches (244 x 152 x 69 mm) |
| Product Weight | 1 lbs (0.5 kg) |
| Shipping Dimension | 10 x 7 x 3 inches (254 x 178 x 76 mm) |
| Shipping Weight | 1.5 lbs (0.7 kg) |
| Warranty | 2 years |
| Country of Origin | US |
| Material | PLA |
| In the Box | Console Insert for Shure SBC 220 or SBC 240 |



For more information, contact
Heckler or your favorite Heckler
Authorized Dealer.

hecklerdesign.com
sales@hecklerdesign.com
(844) 432-5930

Heckler

Duet Ready



**Console Insert
for Dual Shure SBC 220 or SBC 240
H911**

Heckler

With this Heckler Lectern Console Insert, you can seamlessly and conveniently integrate two Shure Networked Docking Chargers into your Heckler Lectern.

Features

Compatible with two Shure SBC 220 or SBC 240 Docking Chargers.

The docking charger is positioned flush with the Lectern desktop for a clutter free integrated look.

This product can be installed quickly and securely into the console of a Heckler Lectern, with no tools required.

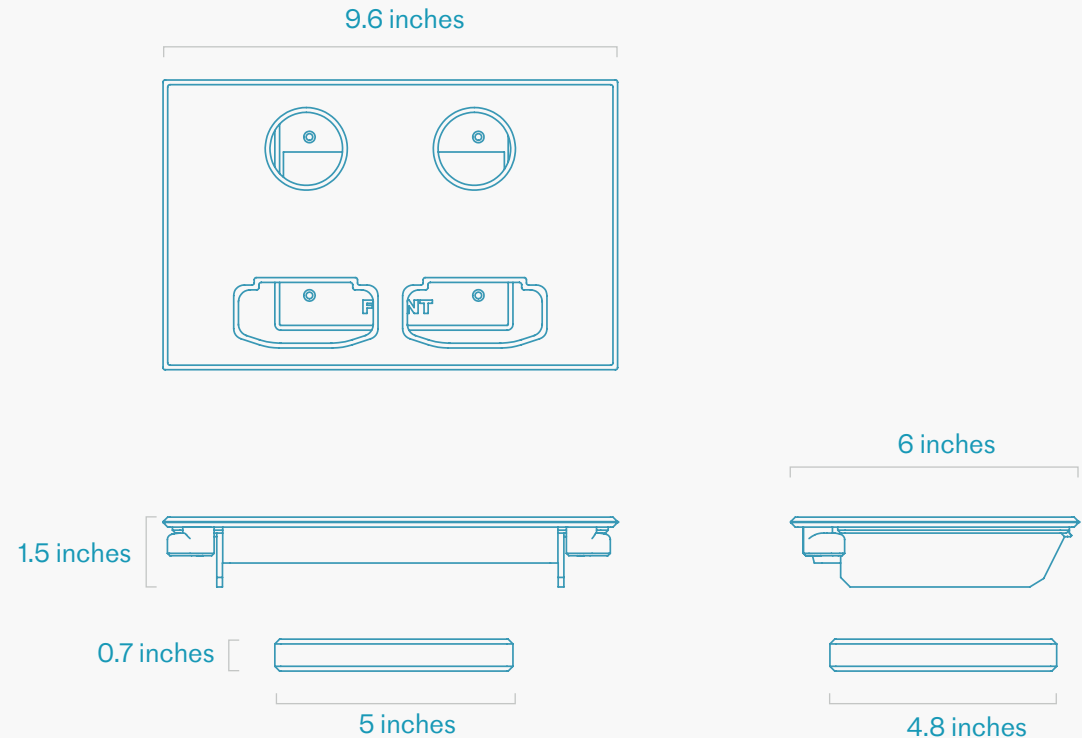
H911 Console Insert for Dual Shure SBC 220 or SBC 240



Heckler

Specifications

| | |
|----------------------|---|
| SKU | H911 |
| Trim Plate Dimension | 9.6 x 6 x 1.5 inches (244 x 152 x 38 mm) |
| Base Plate Dimension | 5 x 4.8 x 0.7 inches (244 x 152 x 18 mm) |
| Product Weight | 1.5 lbs (0.7 kg) |
| Shipping Dimension | 10 x 7 x 3 inches (254 x 178 x 76 mm) |
| Shipping Weight | 2 lbs (0.9 kg) |
| Warranty | 2 years |
| Country of Origin | US |
| Material | PLA |
| In the Box | Console Insert for Shure SBC 220 and SBC 240 Assembly Hardware |



For more information, contact
Heckler or your favorite Heckler
Authorized Dealer.

hecklerdesign.com
sales@hecklerdesign.com
(844) 432-5930

Heckler

Integrated Crestron Control



Console Insert

for Crestron TSW 770 & TSW 1070

H912

Heckler

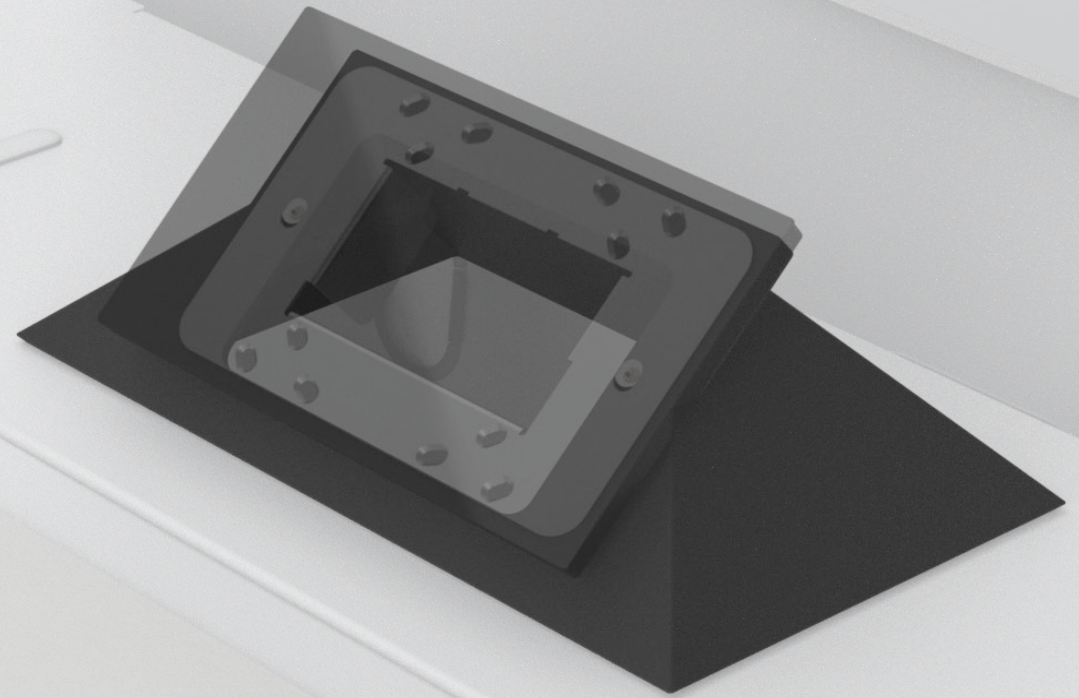
Add the power and versatility of Crestron Touch Screens directly into Heckler Lectern with this sleek Console Insert.

Features

Compatible with Crestron TSW 770 and TSW 1070 Touch Screens.

Positions your Crestron Touch Screens into Heckler Lectern with ADA-Compliance.

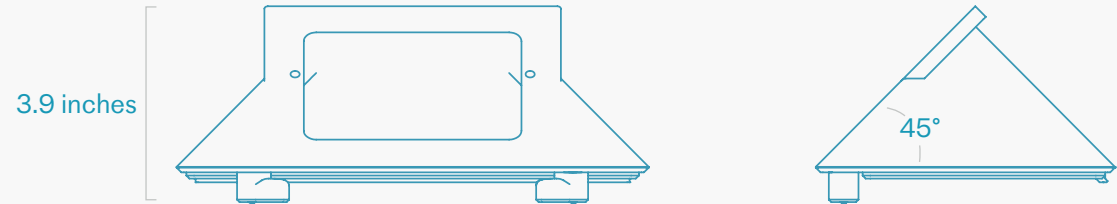
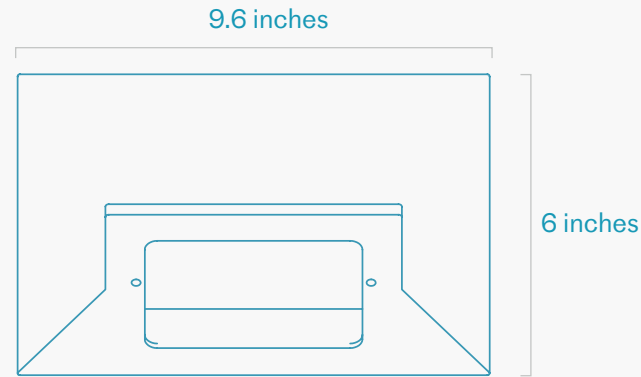
This product can be installed quickly and securely into the console of a Heckler Lectern, with no tools required.



Heckler

Specifications

| | |
|--------------------|---|
| SKU | H912 |
| Product Dimension | 9.6 x 6 x 3.9 inches (244 x 152 x 99 mm) |
| Product Weight | 1.5 lbs (0.7 kg) |
| Shipping Dimension | 12 x 6 x 6 inches (305 x 152 x 152 mm) |
| Shipping Weight | 2 lbs (0.9 kg) |
| Warranty | 2 years |
| Country of Origin | US |
| Material | PLA |
| In the Box | Console Insert for TSW 770 or TSW 1070 Assembly Hardware |



For more information, contact
Heckler or your favorite Heckler
Authorized Dealer.

hecklerdesign.com
sales@hecklerdesign.com
(844) 432-5930

Heckler

Add Extron AAP



**Console Insert
for Extron AAP 104
H913**

Heckler

Offer your instructors a full array of courtesy IO by adding the full capabilities of the Extron AAP system to Heckler Lectern.

Features

Compatible with Extron AAP 104 faceplates and AAP Modules.

Positions your courtesy IO with ADA-Compliance.

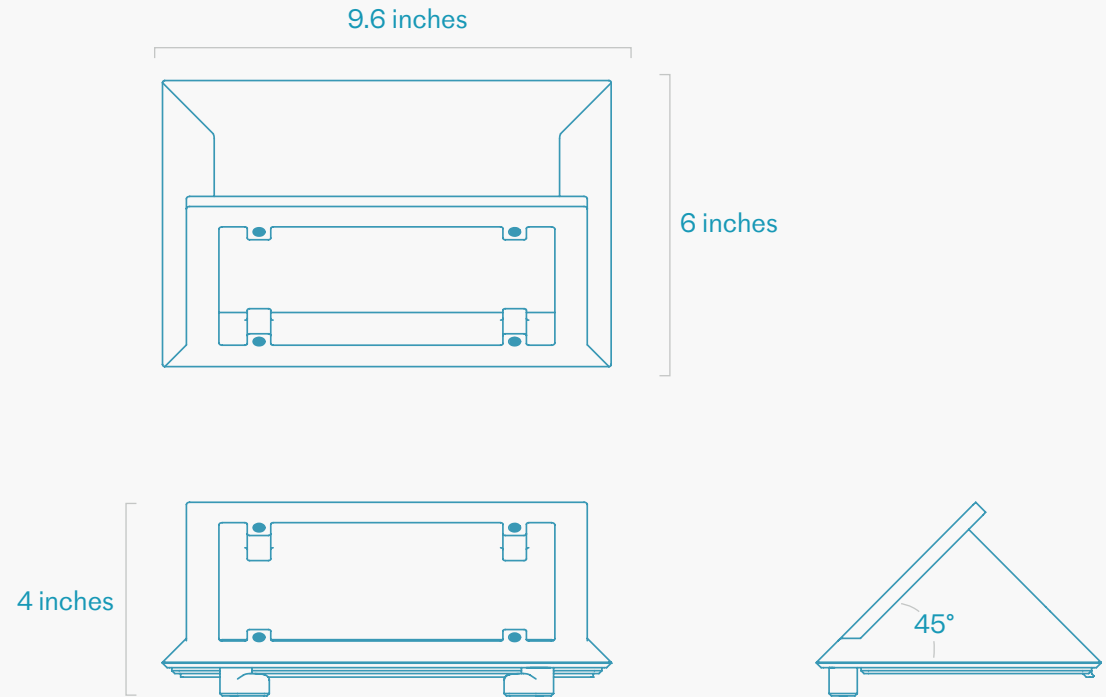
This product can be installed quickly and securely into the console of a Heckler Lectern, with no tools required.



Heckler

Specifications

| | |
|--------------------|---|
| SKU | H913 |
| Product Dimension | 9.6 x 6 x 4 inches (244 x 152 x 102 mm) |
| Product Weight | 1.5 lbs (0.7 kg) |
| Shipping Dimension | 12 x 6 x 6 inches (305 x 152 x 152 mm) |
| Shipping Weight | 2 lbs (0.9 kg) |
| Warranty | 2 years |
| Country of Origin | US |
| Material | PLA |
| In the Box | Console Insert for Extron AAP 104 |



For more information, contact
Heckler or your favorite Heckler
Authorized Dealer.

hecklerdesign.com
sales@hecklerdesign.com
(844) 432-5930

Heckler

Modern Courtesy IO



Console Insert
for Courtesy IO
H914

Heckler

Easily provide your instructors with today's most modern power and data amenities with this special Console Insert for Heckler Lectern.

Features

Support for integrated wireless phone charger. Requires an Apple MagSafe Charger.

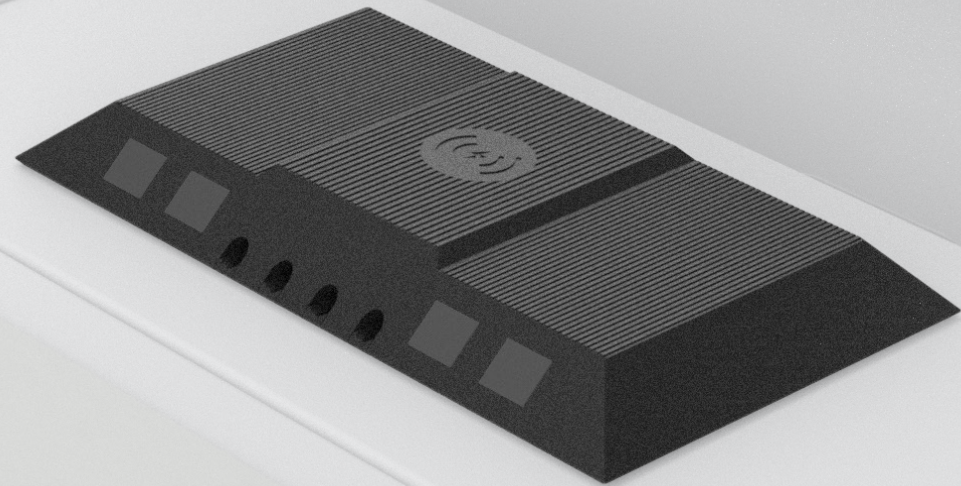
Positions your courtesy IO with ADA-Compliance.

Apple MagSafe Charger, keystone adapters, and cables not included.

Four keystone positions enable you to offer the ports your instructors need, such as USB-A, USB-C, USB-C PD, HDMI, and more.

Four cable pass-thru ports give you a clean and simple way to bring HDMI, USB-C, keyboard, and mouse cables to the desktop.

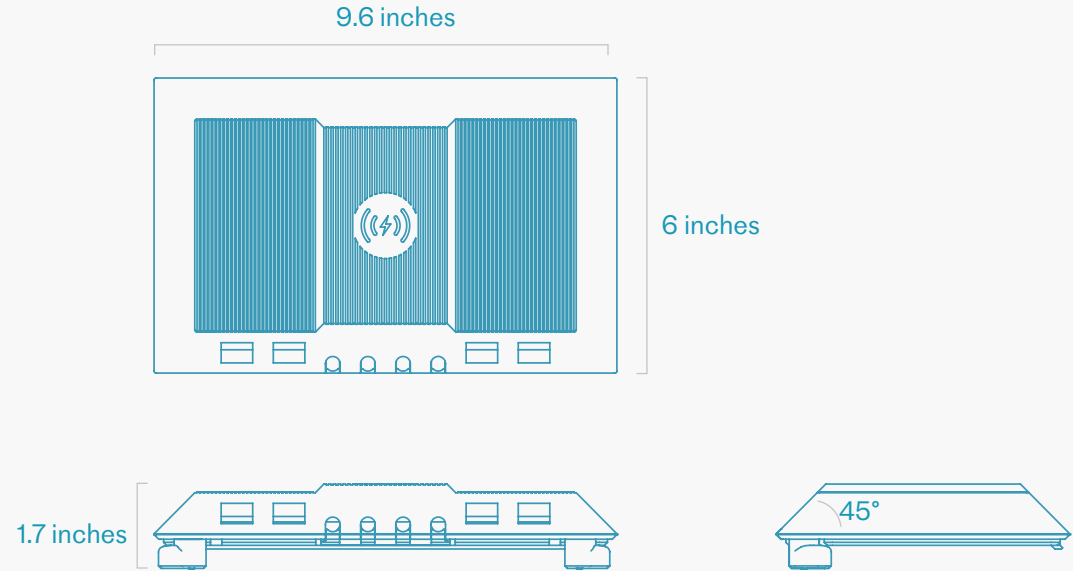
This product can be installed quickly and securely into the console of a Heckler Lectern, with no tools required.



Heckler

Specifications

| | |
|--------------------|--|
| SKU | H914 |
| Product Dimension | 9.6 x 6 x 1.7 inches (244 x 152 x 38 mm) |
| Product Weight | 1.5 lbs (0.7 kg) |
| Shipping Dimension | 10 x 7 x 3 inches (254 x 178 x 76 mm) |
| Shipping Weight | 2 lbs (0.9 kg) |
| Warranty | 2 years |
| Country of Origin | US |
| Material | PLA |
| In the Box | Console Insert for Courtesy IO |



For more information, contact
Heckler or your favorite Heckler
Authorized Dealer.

hecklerdesign.com
sales@hecklerdesign.com
(844) 432-5930

Heckler

Future Ready

Console Insert Cover
H915



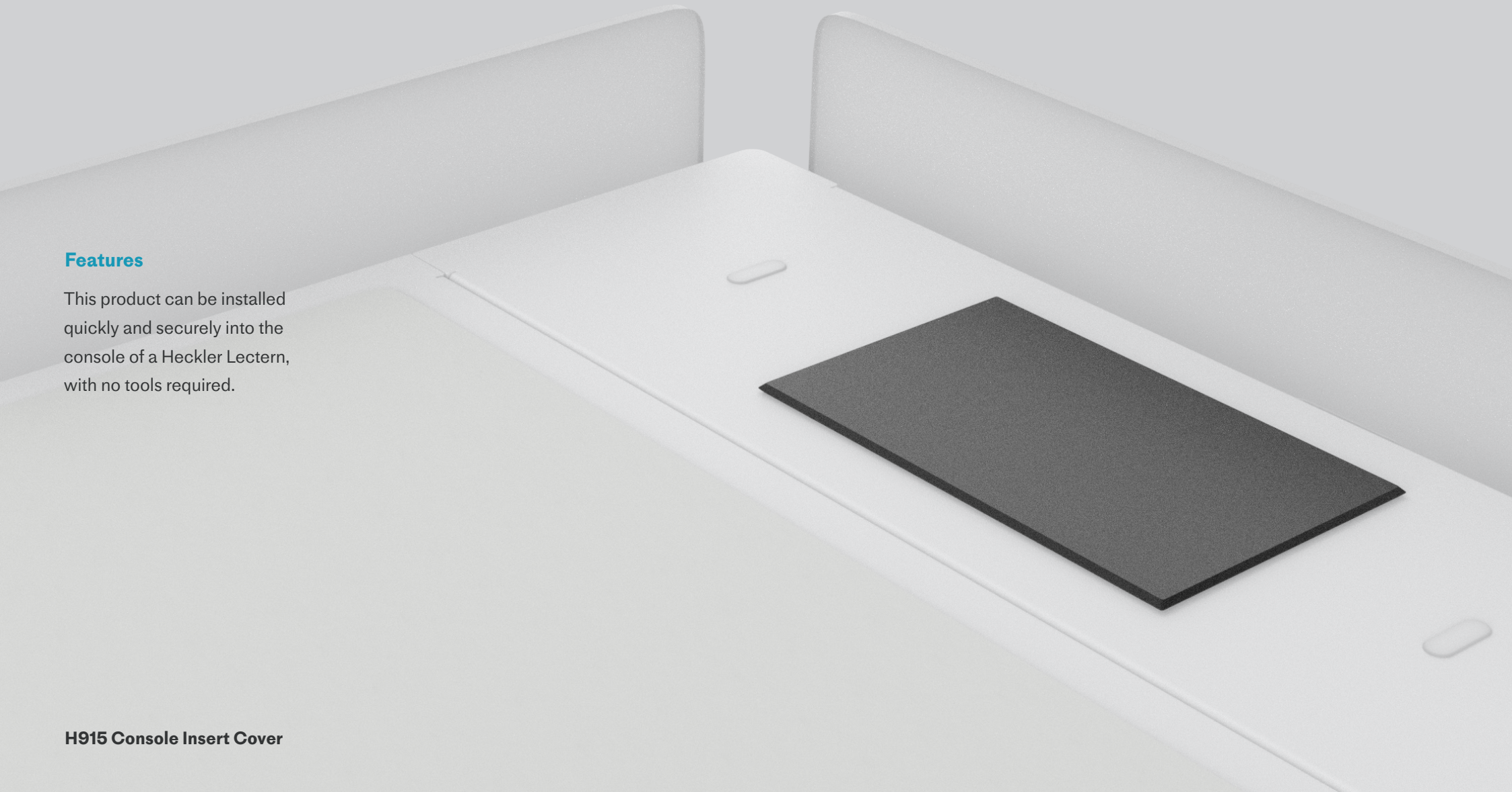
Heckler

Cover your unused Console Insert locations with this convenient cover.

Features

This product can be installed quickly and securely into the console of a Heckler Lectern, with no tools required.

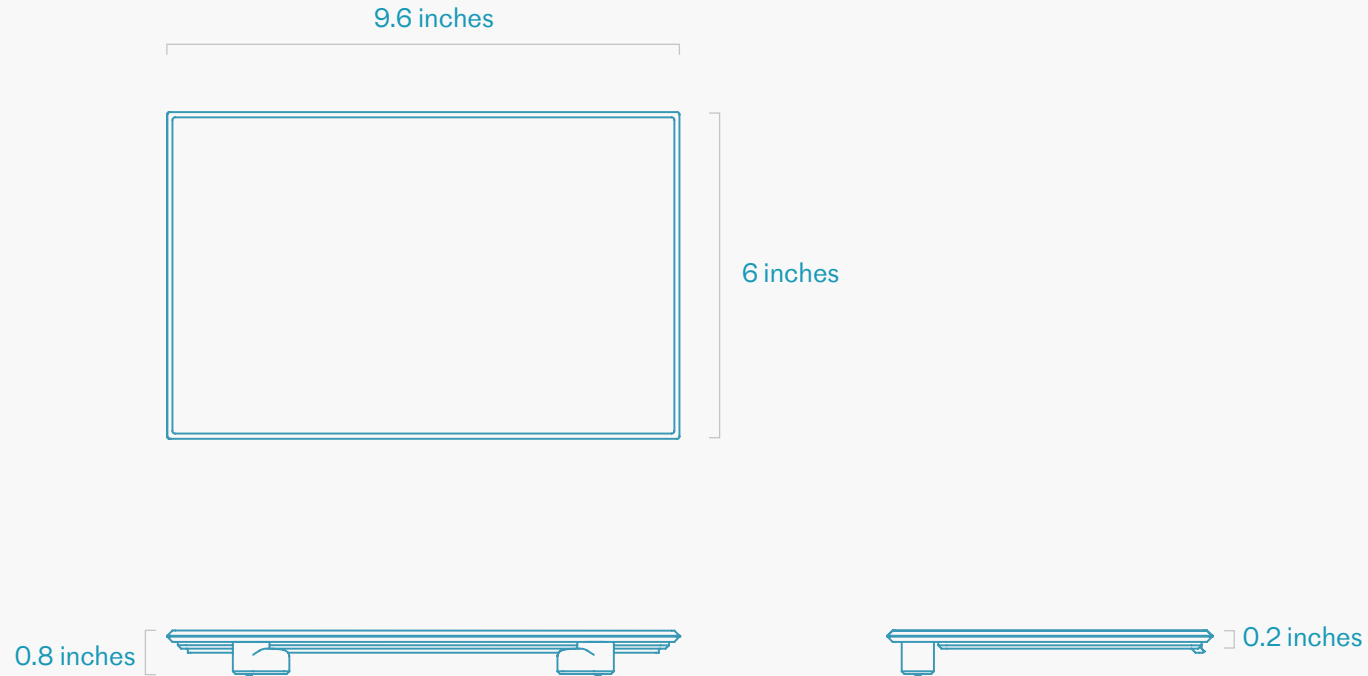
H915 Console Insert Cover



Heckler

Specifications

| | |
|--------------------|--|
| SKU | H915 |
| Product Dimension | 9.6 x 6 x 0.8 inches (244 x 152 x 20 mm) |
| Product Weight | 0.5 lbs (0.2 kg) |
| Shipping Dimension | 10 x 7 x 3 inches (254 x 178 x 76 mm) |
| Shipping Weight | 1lbs (0.5 kg) |
| Warranty | 2 years |
| Country of Origin | US |
| Material | PLA |
| In the Box | Console Insert Cover |



For more information, contact
Heckler or your favorite Heckler
Authorized Dealer.

hecklerdesign.com
sales@hecklerdesign.com
(844) 432-5930

Heckler

Docked and Loaded



Console Insert
for Shure SBC 200
H916

Heckler

With this Heckler Lectern Console Insert, you can seamlessly and conveniently integrate Shure's Networked Docking Charger into your Heckler Lectern.

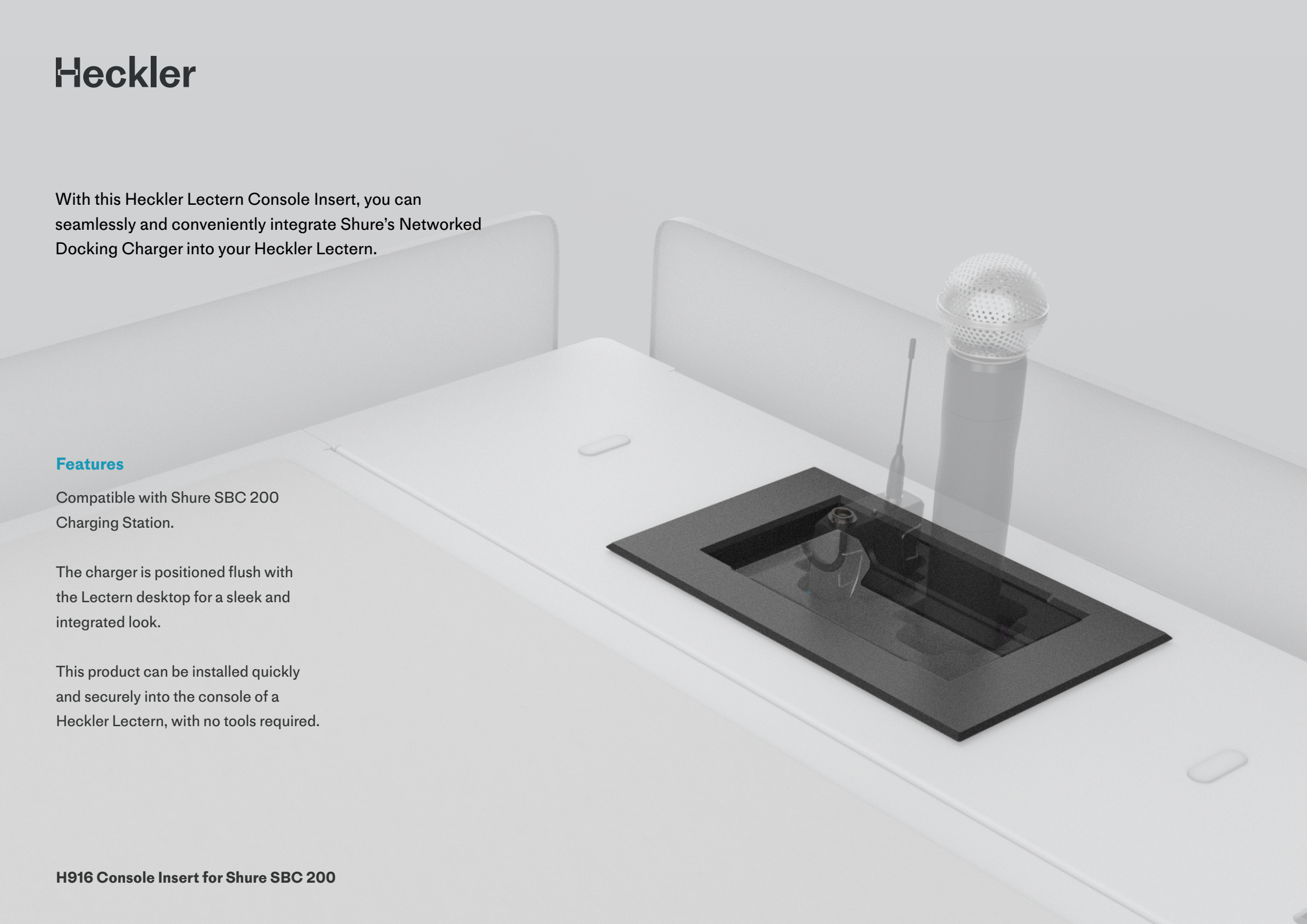
Features

Compatible with Shure SBC 200 Charging Station.

The charger is positioned flush with the Lectern desktop for a sleek and integrated look.

This product can be installed quickly and securely into the console of a Heckler Lectern, with no tools required.

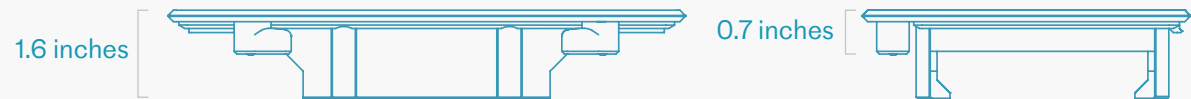
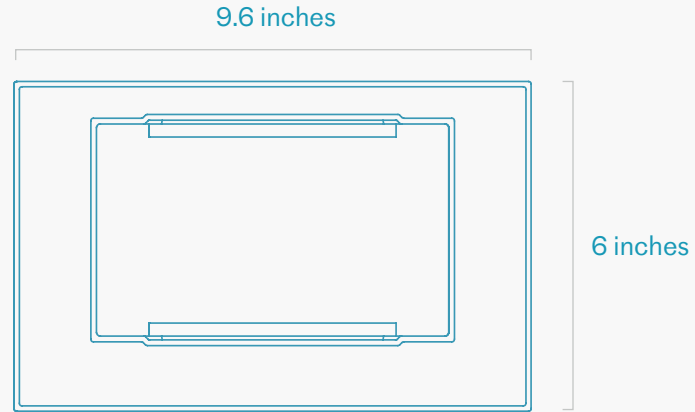
H916 Console Insert for Shure SBC 200



Heckler

Specifications

| | |
|--------------------|--|
| SKU | H916 |
| Product Dimension | 9.6 x 6 x 1.6 inches (244 x 152 x 41 mm) |
| Product Weight | 1 lbs (0.5 kg) |
| Shipping Dimension | 10 x 7 x 3 inches (254 x 178 x 76 mm) |
| Shipping Weight | 1.5 lbs (0.7 kg) |
| Warranty | 2 years |
| Country of Origin | US |
| Material | PLA |
| In the Box | Console Insert for Shure SBC 200 |



For more information, contact
Heckler or your favorite Heckler
Authorized Dealer.

hecklerdesign.com
sales@hecklerdesign.com
(844) 432-5930

Heckler

Touch Screen At Hand



**Console Insert
for Crestron Swivel Mount Kit
H917**

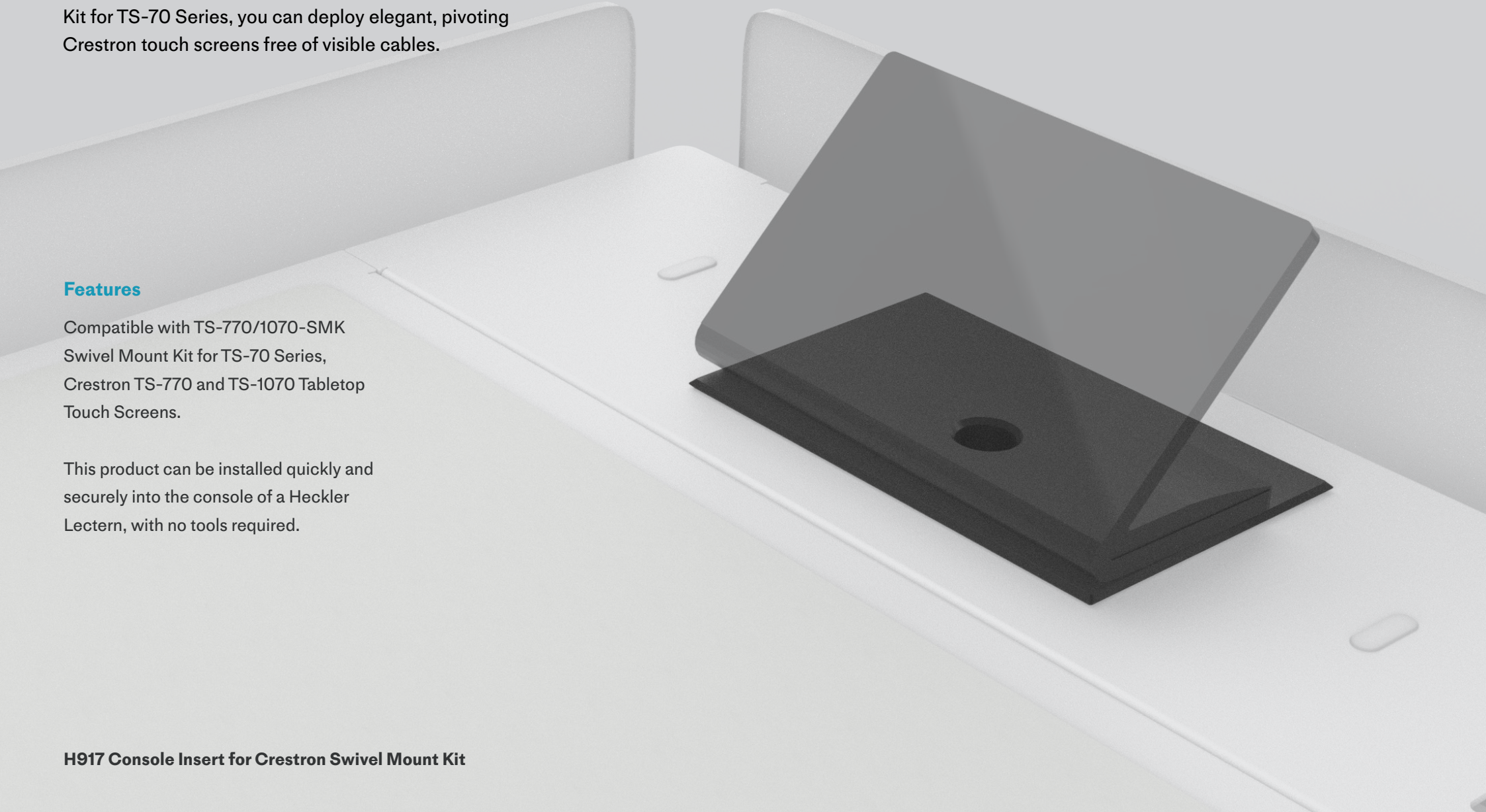
Heckler

Using this Console Insert with the Crestron Swivel Mount Kit for TS-70 Series, you can deploy elegant, pivoting Crestron touch screens free of visible cables.

Features

Compatible with TS-770/1070-SMK Swivel Mount Kit for TS-70 Series, Crestron TS-770 and TS-1070 Tabletop Touch Screens.

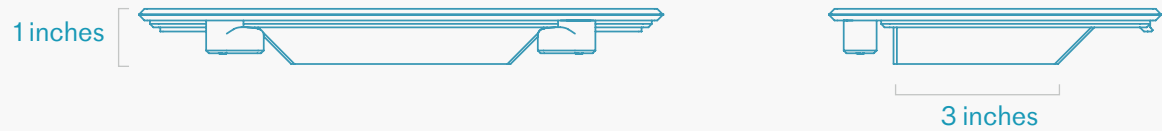
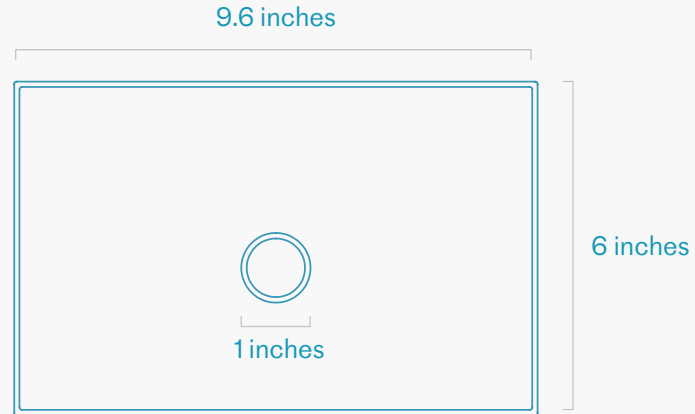
This product can be installed quickly and securely into the console of a Heckler Lectern, with no tools required.



Heckler

Specifications

| | |
|--------------------|---|
| SKU | H917 |
| Product Dimension | 9.6 x 6 x 1 inches (244 x 152 x 25 mm) |
| Product Weight | 1 lbs (0.5 kg) |
| Shipping Dimension | 10 x 7 x 3 inches (254 x 178 x 76 mm) |
| Shipping Weight | 1.5 lbs (0.7 kg) |
| Warranty | 2 years |
| Country of Origin | US |
| Material | PLA |
| In the Box | Console Insert for Crestron Swivel Mount Kit Assembly Hardware |



For more information, contact
Heckler or your favorite Heckler
Authorized Dealer.

hecklerdesign.com
sales@hecklerdesign.com
(844) 432-5930

Heckler

Neat Pad At the Ready



**Console Insert
for Neat Pad
H918**

Heckler

Easily and professionally deploy a Neat Pad to control your video meeting system and room controls with this Console Insert for Heckler Lectern.

Features

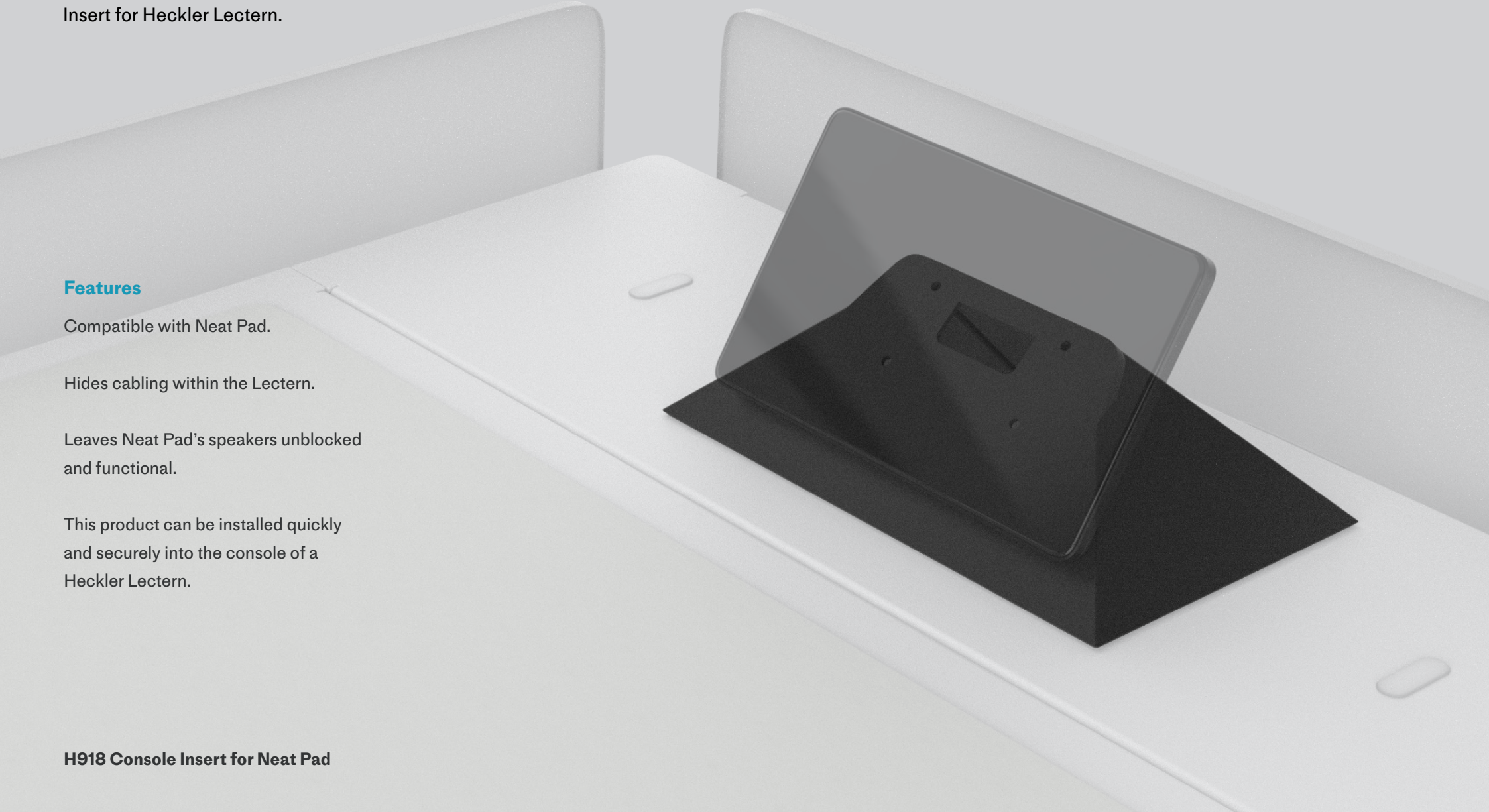
Compatible with Neat Pad.

Hides cabling within the Lectern.

Leaves Neat Pad's speakers unblocked and functional.

This product can be installed quickly and securely into the console of a Heckler Lectern.

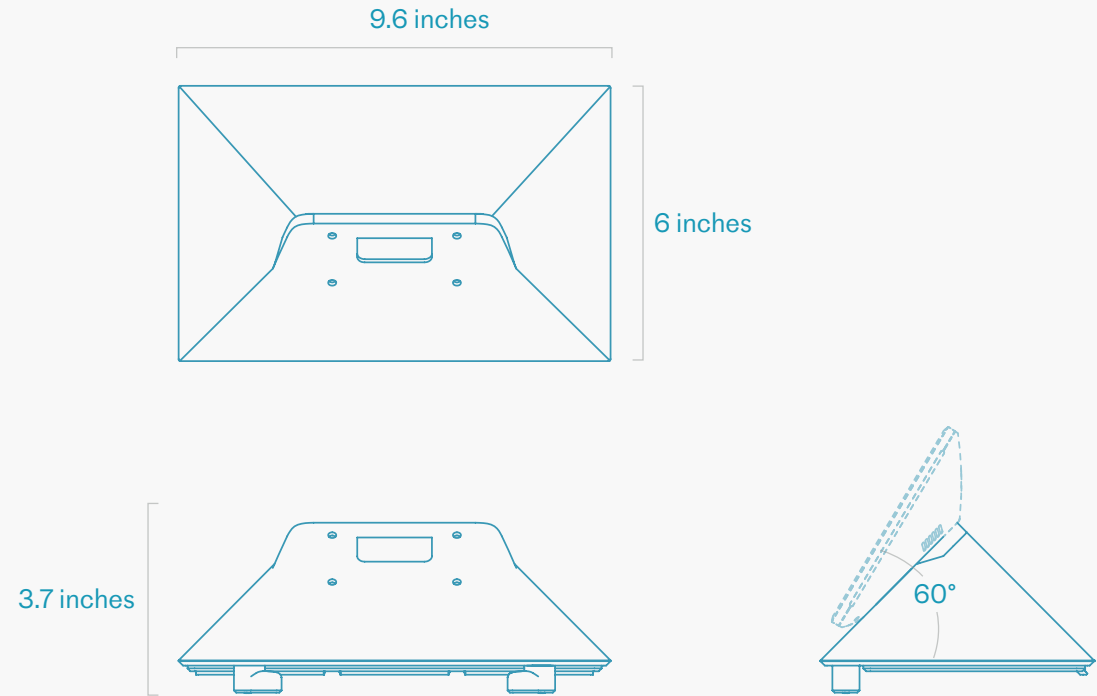
H918 Console Insert for Neat Pad



Heckler

Specifications

| | |
|--------------------|---|
| SKU | H918 |
| Product Dimension | 9.6 x 6 x 3.7 inches (244 x 152 x 102 mm) |
| Product Weight | 1.5 lbs (0.7 kg) |
| Shipping Dimension | 12 x 6 x 6 inches (305 x 152 x 152 mm) |
| Shipping Weight | 2 lbs (0.9 kg) |
| Warranty | 2 years |
| Country of Origin | US |
| Material | PLA |
| In the Box | Console Insert for Neat Pad |



For more information, contact
Heckler or your favorite Heckler
Authorized Dealer.

hecklerdesign.com
sales@hecklerdesign.com
(844) 432-5930

Heckler

Dock,
Dock,
Gooseneck!



Console Insert
for Shure SBC 220 or 240 and A400SM
H919

Heckler

Utilize a single Console Insert location to create a mounting location for a Shure gooseneck mic and a networked docking station.

Features

Compatible with select Shure MX-Series Gooseneck Microphones when used with the Shure A400SM Shock Mount

Compatible with Shure SBC 220 or SBC 240 Networked Docking Station.

Installs quickly and securely into the console of a Heckler Lectern.

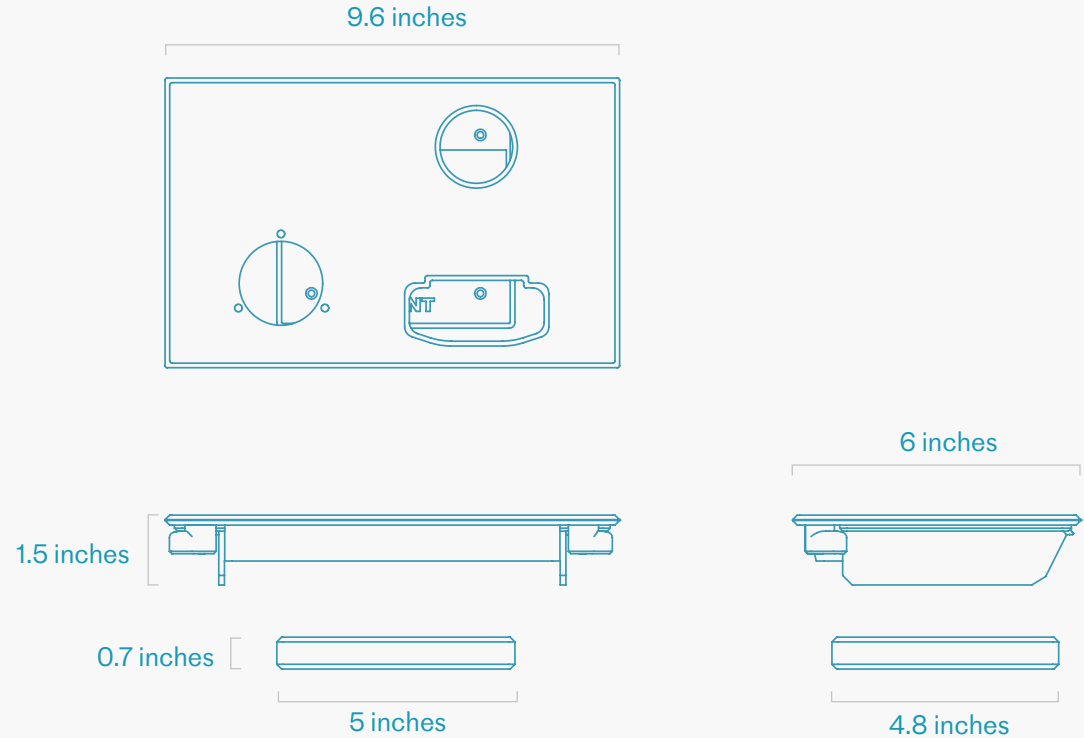
H919 Console Insert for Shure SBC 220 or SBC 240 and A400SM



Heckler

Specifications

| | |
|----------------------|---|
| SKU | H919 |
| Trim Plate Dimension | 9.6 x 6 x 1.5 inches (244 x 152 x 38 mm) |
| Base Plate Dimension | 5 x 4.8 x 0.7 inches (244 x 152 x 18 mm) |
| Product Weight | 1.5 lbs (0.7 kg) |
| Shipping Dimension | 10 x 7 x 3 inches (254 x 178 x 76 mm) |
| Shipping Weight | 2 lbs (0.9 kg) |
| Warranty | 2 years |
| Country of Origin | US |
| Material | PLA |
| In the Box | Console Insert for Shure SBC 220 or SBC 240 and A400SM Installation Hardware *Recommended gooseneck size is 18" minimum." |



For more information, contact
Heckler or your favorite Heckler
Authorized Dealer.

hecklerdesign.com
sales@hecklerdesign.com
(844) 432-5930